

Board Members

Joe Neves
Richard Valle
Doug Verboon
Rusty Robinson
Richard Fagundes
Mark Kairis



Staff

Chuck Kinney, General Manager
Diane Freeman, General Counsel
Catherine Venturella, Clerk

Special Meeting Agenda

Date: Tuesday, November 5, 2024
Time: 1:00 p.m.
Place: BOARD of SUPERVISORS CHAMBERS, Kings County Government Center
1400 W. Lacey Boulevard, Hanford, California 93230

☎ (559) 852-2362 ✉ bosquestions@co.kings.ca.us 🌐 website: <https://www.midkingsrivergsa.org>

The meeting can be attended on the Internet by clicking this link:

<https://countyofkings.webex.com/countyofkings/j.php?MTID=mb31e7bc27f6cab509d5c675ce387239d>

or by sending an email to bosquestions@co.kings.ca.us on the morning of the meeting for an automated email response with the WebEx meeting link information. Members of the public attending via WebEx will have the opportunity to provide public comment during the meeting. Remote WebEx participation for members of the public is provided for convenience only. In the event that the WebEx connection malfunctions or becomes unavailable for any reason, the Board of Supervisors reserves the right to conduct the meeting without remote access. *WebEx will be available for access at 12:55 p.m.*

Members of the public who wish to view/observe the meeting virtually can do so on the internet at:
www.countyofkings.com and click on the “Join Meeting” button or by clicking this link:

<https://youtube.com/live/2mmfChTMnOA?feature=share>

**Members of the public viewing the meeting through YouTube will not have the ability to provide public comment.

Members of the public may submit written comments on any matter within the Board’s subject matter jurisdiction, regardless of whether it is on the agenda for the Board’s consideration or action, and those comments may become part of the administrative record of the meeting. Comments will not be read into the record, only the names of those who have submitted comments will be read. Written comments should be directed to bosquestions@co.kings.ca.us email by 8:00 a.m. on the morning of the noticed meeting to be included in the record, those comments received after 8:00 a.m. may become part of the record of the next meeting. E-mail is not monitored during the meeting. To submit written by U.S. Mail to: Board of Director’s of the Mid-Kings River GSA, Attn: Clerk of the Board, County of Kings, 1400 W. Lacey Blvd., Hanford, CA 93230.

I 1:00 PM CALL TO ORDER
ROLL CALL – Chairperson
PLEDGE OF ALLEGIANCE

II UNSCHEDULED APPEARANCES
Any person may directly address the Board at this time on any item on the agenda, or on any other items of interest to the public, that is within the subject matter jurisdiction of the Board. Two (2) minutes are allowed for each item.

III APPROVAL OF MINUTES
A. Approval of the minutes from the special meeting for September 17, 2024.

IV

CONSENT CALENDAR

All items listed under the consent calendar are considered to be routine and will be enacted by one motion. For any discussion of an item on the consent calendar, it will be removed at the request of any Board Member and made a part of the regular agenda.

- A. None**

V

REGULAR AGENDA ITEMS

A. General Manager update

1. Discussion

B. Discussion concerning selection of an Engineer for the GSA

1. Staff Report
2. Discussion
3. Decision

C. Election of members to the Stakeholder Committee

1. Staff Report
2. Discussion
3. Decision

D. Potential Smart Water Grant in coordination with South Fork Kings GSA

1. Staff Report
2. Discussion
3. Decision

VI

A. Board Member Announcements or Reports

On their own initiative Board Members may make a brief announcement or a brief report on their own activities. They may ask questions for clarification, make a referral to staff or take action to have staff place a matter of business on a future agenda (Gov. Code Section 54954.2a).

- ◆ Board Correspondence
- ◆ Information on Future Agenda Items

VII

A. CLOSED SESSION

None

VIII

A. ADJOURNMENT

The regular meeting scheduled for November 19, 2024 is canceled and the next regular meeting is scheduled for December 17, 2024 at 1:00 PM.

In compliance with the Americans with Disabilities Act, if you need special assistance to participate in this meeting, please contact the Mid-Kings River GSA office at (559) 852-2362 by 9:00 a.m. on the Monday prior to this meeting.

Agenda backup information and any public records provided to the Board after the posting of the agenda for this meeting will be available for public review within 24 hours of receipt of said documents, at the Mid-Kings River GSA office, located at 1400 W. Lacey Blvd., Hanford, CA 93230 or at

<https://www.midkingsrivergsa.org/board.html>

Board Members

Joe Neves
Richard Valle
Doug Verboon
Rusty Robinson
Richard Fagundes
Mark Kairis



Staff

Chuck Kinney, General Manager
Diane Freeman, General Counsel
Catherine Venturella, Clerk

Special Meeting Action Summary

Date: Tuesday, September 17, 2024
Time: 1:00 p.m.
Place: BOARD of SUPERVISORS CHAMBERS, Kings County Government Center
1400 W. Lacey Boulevard, Hanford, California 93230

☎ (559) 852-2362 ✉ bosquestions@co.kings.ca.us 🌐 website: <https://www.midkingsrivergsa.org>

The meeting can be attended on the Internet by clicking this link:

<https://countyofkings.webex.com/countyofkings/j.php?MTID=m3a04628bec64d1ed3eb1554572898668>

or by sending an email to bosquestions@co.kings.ca.us on the morning of the meeting for an automated email response with the WebEx meeting link information. Members of the public attending via WebEx will have the opportunity to provide public comment during the meeting. Remote WebEx participation for members of the public is provided for convenience only. In the event that the WebEx connection malfunctions or becomes unavailable for any reason, the Board of Supervisors reserves the right to conduct the meeting without remote access. *WebEx will be available for access at 12:55 p.m.*

Members of the public who wish to view/observe the meeting virtually can do so on the internet at: www.countyofkings.com and click on the “Join Meeting” button or by clicking this link:

<https://youtube.com/live/SGpEALHvaJY?feature=share>

****Members of the public viewing the meeting through YouTube will not have the ability to provide public comment.**

Members of the public may submit written comments on any matter within the Board’s subject matter jurisdiction, regardless of whether it is on the agenda for the Board’s consideration or action, and those comments may become part of the administrative record of the meeting. Comments will not be read into the record, only the names of those who have submitted comments will be read. Written comments should be directed to bosquestions@co.kings.ca.us email by 8:00 a.m. on the morning of the noticed meeting to be included in the record, those comments received after 8:00 a.m. may become part of the record of the next meeting. E-mail is not monitored during the meeting. To submit written by U.S. Mail to: Board of Director’s of the Mid-Kings River GSA, Attn: Clerk of the Board, County of Kings, 1400 W. Lacey Blvd., Hanford, CA 93230.

- I 1:00 PM CALL TO ORDER**
 - ROLL CALL – Chairperson**
 - PLEDGE OF ALLEGIANCE**
 - PRESENT: JOE NEVES, MARK KAIRIS, RICHARD VALLE, DOUG VERBOON, RUSTY ROBINSON**
 - ABSENT: RICHARD FAGUNDES**

II UNSCHEDULED APPEARANCES

Any person may directly address the Board at this time on any item on the agenda, or on any other items of interest to the public, that is within the subject matter jurisdiction of the Board. Two (2) minutes are allowed for each item. **NONE**

III APPROVAL OF MINUTES

A. Approval of the minutes from the special meeting for August 20, 2024.

ACTION: APPROVED AS PRESENTED (JN, RR, MK, RV, DV – Aye; RF - Absent)

IV CONSENT CALENDAR

All items listed under the consent calendar are considered to be routine and will be enacted by one motion. For any discussion of an item on the consent calendar, it will be removed at the request of any Board Member and made a part of the regular agenda.

A. **None**

V REGULAR AGENDA ITEMS

A. **Discussion on the formation of a Stakeholder Committee**

1. Staff Report
2. Discussion
3. Decision

ACTION: ADOPTED AS AMENDED TO INCLUDE REPORTING TO THE BOARD OF DIRECTORS ON ACTIVITIES AT LEAST EVERY TWO MONTHS AND TO INCLUDE WELL DRILLER/PUMP SPECIALIST TO THE CATEGORY FOR APPOINTMENT (MK, RR, JN, RV, DV-Aye, RF-Absent)

B. **Discussion concerning Counsel’s Conflict Waiver**

1. Staff Report
2. Discussion
3. Decision

ACTION: APPROVED AS PRESENTED (JN, RR, MK, RV, DV-Aye, RF-Absent)

C. **Discussion on Amendment #3 to the Sustainable Groundwater Management Round I grant (Agreement No. 4600014648)**

1. Staff Report
2. Discussion
3. Decision

ACTION: APPROVED AS PRESENTED (JN, RR, MK, RV, DV-Aye, RF-Absent)

VI A. **Board Member Announcements or Reports**

*On their own initiative Board Members may make a brief announcement or a brief report on their own activities. They may ask questions for clarification, make a referral to staff or take action to have staff place a matter of business on a future agenda (Gov. Code Section 54954.2a). **None***

◆ Board Correspondence: **None**

◆ Information on Future Agenda Items: **Director Verboon asked staff when the applications will be brought back to the Board for appointment to the Stakeholders Advisory Committee. Chuck Kinney stated that the application period will be open for a minimum of 30 days which will close after the next special meeting set for October 15, 2024 and stated that depending on how many applications are received the Board may need to hold a special meeting after October 17, 2024 to review and appoint members.**

VII A. **CLOSED SESSION**
♦ **Significant exposure to litigation: (*1 Case*) [Govt. Code Section 54956.9 (d)(2)(e)(1)]**

VIII A. **ADJOURNMENT**
The next special meeting is scheduled for October 15, 2024 at 1:00 PM.

In compliance with the Americans with Disabilities Act, if you need special assistance to participate in this meeting, please contact the Mid-Kings River GSA office at (559) 852-2362 by 9:00 a.m. on the Monday prior to this meeting.

Agenda backup information and any public records provided to the Board after the posting of the agenda for this meeting will be available for public review within 24 hours of receipt of said documents, at the Mid-Kings River GSA office, located at 1400 W. Lacey Blvd., Hanford, CA 93230 or at <https://www.midkingsrivergsa.org/board.html>



Date: November 5, 2024

To: Board of Directors

From: Chuck Kinney, General Manager

Subject: Selection of Stakeholder Advisory Committee Members

Background

At your meeting on September 17, 2024, your Board authorized the release of a Request for Qualifications (RFQ) to procure an engineering consultant to help with routine day to day needs of the GSA as well as the preparation and implementation of a Groundwater Sustainability Plan (GSP) for the Mid-Kings River GSA. The RFQ was prepared and released for advertisement on October 2, 2024, with the closing date on October 25, 2024. There were thirty-three (33) consulting firms who looked at the RFQ and two of those consulting firms chose to submit a bid. An evaluation committee has reviewed the two proposals and recommends that the Mid-Kings River GSA enter into a contract with Geosyntec for ongoing engineering services needed by the GSA with day to day operations as well as the preparation of a GSP for the Mid-Kings River GSA which is to include any updates necessary for the GSP based upon direction from the Mid-Kings River GSA Board of Directors or General Manager following the review by the State Water Resources Control Board.

Request

The General Manager requests the Board of Directors authorize the Chairperson to sign Agreement No. 24-01 following the submittal of all of the required insurance documents. Agreement No. 24-01 will enter the Mid-Kings River GSA into contract with Geosyntec to provide for ongoing engineering services needed by the GSA with day to day operations as well as the preparation of a GSP for the Mid-Kings River GSA which is to include any updates necessary for the GSP based upon direction from the Mid-Kings River GSA Board of Directors or General Manager following the review by the State Water Resources Control Board.



Statement of Qualifications

Groundwater Sustainability Plan Preparation & Implementation for the
Mid-Kings River Groundwater Sustainability Agency – Tulare Lake Subbasin

RFP No. 24-01

October 25, 2024

Prepared by:

Geosyntec 
consultants

Prepared for:

MID-KINGS RIVER
GROUNDWATER SUSTAINABILITY AGENCY 

Cover Letter

Mr. Chuck Kinney
General Manager
Mid-Kings River GSA
1400 W. Lacey Blvd, Bldg. #6
Hanford, CA 93230

October 25, 2024

Subject: Request for Qualifications No. 24-01

Sustainable Groundwater Management Act Groundwater Sustainability Plan Preparation and Implementation for the Mid-Kings River Groundwater Sustainability Agency for the Tulare Lake Subbasin

Dear Mr. Kinney,

Geosyntec Consultants, Inc. (Geosyntec) is pleased to submit to the Mid-Kings River Groundwater Management Act (GSA) our Statement of Qualifications (SOQ) for the preparation of a Groundwater Sustainability Plan (GSP) for the Tulare Lake Subbasin.

Our team is highly qualified to provide the Mid-Kings GSA with a full spectrum of GSP development and implementation services. We have been working closely with the Tulare Lake Subbasin GSA's since 2017 and will provide Mid-Kings GSA with efficient and cost-effective solutions to support GSP implementation. We already have relationships with county and state agencies, as well as local landowners, which will enable us to quickly engage them to finalize a stand-alone GSP for Mid-Kings GSA that will be accepted by DWR and SWRCB.

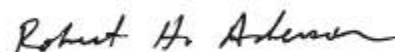
Once the GSP is finalized, we will develop a programmatic approach to support Mid-Kings GSA with the implementation of the projects and management actions (PMAs) that are proposed. The first implementation task will be to develop an internal "road map" that can then be used to prioritize and develop specific scopes of work, budgets, and schedules for individual projects. This can also be used to communicate with Mid-Kings GSA Board members and for public outreach with other stakeholders. From there, we anticipate supporting you on a task order basis for specific projects and assignments.

Thank you for the opportunity to present our qualifications and approach to you. We look forward to working with you and would be happy to discuss any components of our proposal. Please contact Mr. Amer Hussain, PE at (559) 256-5859 if you have any questions.

Sincerely,



Amer Hussain, PE
Project Manager / Senior Principal
(559) 256-5859
AHussain@geosyntec.com



Bob Anderson, LHG
Project Director / Senior Principal
(206) 496-1454
banderson@geosyntec.com



Table of Contents

SECTION A: About Us

Sustainable Groundwater Management	4
--	---

SECTION B: Submittal Packet

Working Experience with State Agencies.....	6
Staff Resources	7

SECTION C: Qualifications

Project Understanding.....	8
Project Approach.....	9
Team Qualifications.....	13
Project Descriptions.....	13
Project Measles Chart.....	16
The Geosyntec Team.....	17
Organizational Chart.....	17
Key Personnel.....	18

SECTION D: Cost Proposal

Cost Proposal.....	21
--------------------	----

APPENDIX A: Resumes

Resumes.....	22
--------------	----

APPENDIX B: Additional Documents

GSP Documents.....	43
--------------------	----



Section A

About Us

Geosyntec is a consulting and engineering firm that works with private and public sector clients to address new ventures and complex problems involving our environment, natural resources, and civil infrastructure.

With a combined staff exceeding 2,600 engineers, scientists, and related technical and project support personnel, we serve our clients from more than 130 offices in the United States, Canada, the United Kingdom, Ireland, Sweden, Finland, Spain, Saudi Arabia, the United Arab Emirates, and Australia. Since our founding in 1983, we have built top-tier practices to meet our clients' needs.

Geosyntec's water resources experts address a wide range of specialized services in the areas of water resources planning, water supply development, water rights, and water conservation. Geosyntec scientists, engineers, and permitting specialists provide clients with integrated solutions based on decades of experience that balance the needs for water supply development and ecological health. We also provide clients with a thorough understanding of their specific water cycle, allowing them to optimize system performance and to make informed demand management decisions. In assisting municipal and private clients with new or existing water rights, we apply our expertise in the context of local, state, and federal requirements.

Sustainable Groundwater Management

The Sustainable Groundwater Management Act (SGMA) is changing the landscape of water management in California in many ways. New regulatory processes are creating new challenges both for the agencies responsible for implementing SGMA and the local stakeholders who are participating in the process. The planning elements of SGMA that have taken place since 2017 have enabled an improved understanding of groundwater and its connections across the watershed. However, technical understanding must be translated to projects and management actions that provide tangible progress towards sustainability by 2040.

Geosyntec has provided SGMA-related services since 2016 and is proud to support GSAs and other stakeholders in addressing the challenges of sustainable groundwater management. With vast experience working on previous versions of the Tulare Lake Subbasin GSP, our team possesses a deep understanding of the region's unique hydrogeologic conditions, agricultural needs, and water management dynamics. We bring a unique combination of highly credentialed experts, practical engineering solutions, and clear

Section A: About Us

communication to convey complex data effectively. Our expertise allows for the integration of the diverse issues affecting the subbasin into workable solutions, with a focus on achieving sustainability through practical, on-the-ground implementation.

Geosyntec provides the following services related to water supply and rights:

- Comprehensive watershed assessments
- Water availability, accessibility, and reliability analyses
- Hydrology and limnology analyses
- Water quality database development and enhancements
- Pollutant load modeling
- Total maximum daily load (TMDL) monitoring plan development
- Reservoir hydraulic and water quality modeling
- Stream flow and groundwater analyses and modeling
- Water rights and use permitting
- Production well, diversion, and conveyance system design
- Development of water conservation plans
- Model peer review
- Litigation support



Section B

Submittal Packet

Working Experience with State Agencies

The submittal packet for the RFP (Section 1 B-D) requested an indication of our experience working with state agencies. We have included this here in the qualifications section of our SOQ. As a firm, working with State Agencies is a crucial component of the services we offer to our clients, and we have worked with hundreds of different federal, state and local agencies across the country. In California, Geosyntec has deep experience working with both the California Department of Water Resources (DWR) and State Water Resources Control Board (SWRCB) in multiple contexts and on behalf of multiple client types, both private and public. We have interfaced with DWR since the initial phases of SGMA and the development of GSPs for the Tulare Lake, Vina, and Wyandotte subbasins and have a good rapport with agency staff. In fact, our initial client manager for the Vina and Wyandotte sub-basins was Paul Gosselin, who was Director of Water Resources for Butte County before he became the Director of Sustainable Groundwater Management for DWR. We have also worked with DWR's Dam Safety program, the Sites Reservoir project, and the California Aqueduct Subsidence Program. Geosyntec represented South Fork Kings GSA during the development of the initial Tulare Lake GSP that was submitted in 2020, but we were not directly involved with DWR staff during GSP development. However, after the initial submittal of the Tulare Lake GSP in 2020, we had multiple technical discussions with DWR staff to develop acceptable revisions to the initial GSP submitted in 2022. These discussions focused on issues related to the definitions and methodologies and Sustainable Management Criteria for groundwater level, subsidence and water quality. With the transferal of GSP oversight from DWR to SWRCB, we are now working closely with SWRCB.

Geosyntec has long-standing experience working with both SWRCB and the Regional Water Quality Boards in multiple contexts for groundwater, surface water and stormwater projects. Our relationship with SWRCB is very good and we have been contracted by SWRCB as their technical consultant for several studies, including a surface water groundwater modeling study of the Ventura River and technical support for the development of statewide standards for storm water capture and infiltration dry wells. We are currently working with SWRCB on behalf of a consortium of clients on amending beneficial use designations for portions of the southern Tulare Lake Basin (note this is different than the Tulare Lake Groundwater Subbasin).

Section B: Submittal Packet

With respect to SGMA and the Tulare Groundwater Subbasin, Geosyntec has been coordinating and leading technical and policy discussions with SWRCB prior to and since the probationary hearings. We have made significant progress toward addressing SWRCB comments on the revised GSP and developing an acceptable revision. Our relationship has evolved into a collaborative environment with both technical and legal staff.

In summary, Geosyntec is well regarded by both clients who need our assistance working with agencies and the agencies themselves. We are committed to representing our client's interests in a collaborative fashion that achieves a positive outcome. Our past and recent experience with DWR and SWRCB is exceptional, and we will continue to support the interests of the Mid-Kings GSA and all its stakeholders.

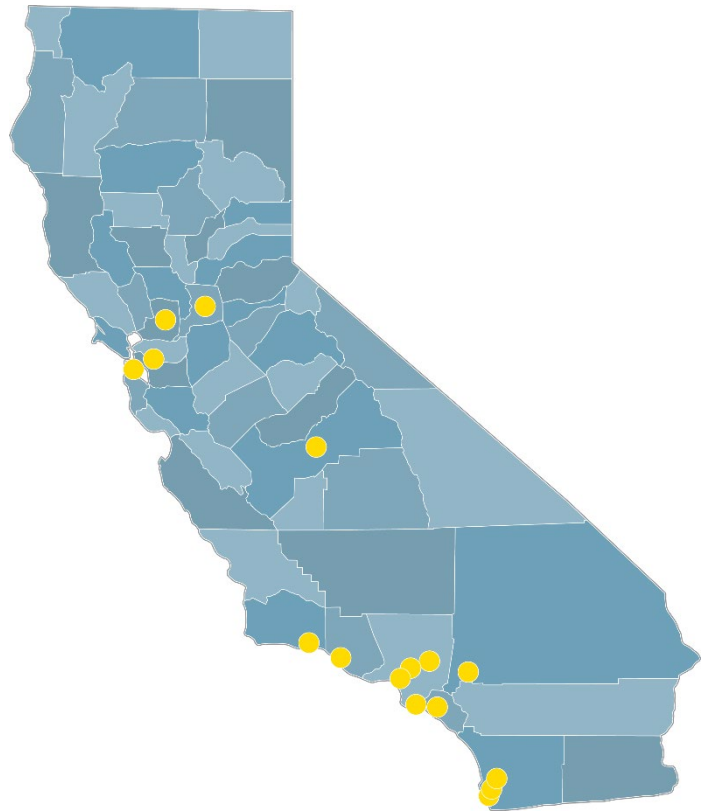
Staff Resources

Geosyntec strives to maintain high productivity and work product excellence. In fact, one of our core values is unsurpassed client service. We closely manage our workloads to assure these goals are met without exception.

With the support of our senior management, we are confident that future work assignments undertaken under Mid-Kings GSA can be sufficiently staffed with necessary resources.

The Geosyntec Team bases staffing selection on qualifications, location, and availability. Geosyntec's managers meet weekly to address regionwide staffing needs. Geosyntec's regional operations are organized by practice area rather than geographic location, so the firm routinely shares engineering personnel.

With 16 offices and more than 300 technical staff in California, Geosyntec has access to resources across the state to support Mid-Kings GSA.



- d. Indicate your firms working experience with state agencies, e.g. Division of State Water Board, DWR, etc.: **Response attached.**

2. STAFF RESOURCES

A. Number of professionals currently in your office: 6

B. Maximum staff employed at any one time during the past three years:
2,600

C. Of present employees, how many are:

Consultants 2044 Technical _____ Other 113

D. Given your existing and planned workload, does your firm have the capacity to handle projects in an expeditious manner to meet time schedule deadlines:

Yes X No _____ Other _____

Specify other:

E. The following additional resources are part of the firm, or normally involved in its projects: (resumes may be included) **See attached.**

3. RELEVANT EXPERIENCE

A. Total number of projects actually completed by the firm in the last three years:

Groundwater Sustainability Plan 4 Studies 10

B. Total number of projects in progress by this firm at this time: >500

C. Indicate the number of years experience your firm has been in business in California: 40

D. Professional societies and honors awarded to firm members: N/A

E. Please complete the following information regarding engineering projects in the past three years:

CLIENT	PROJECT	PROJECT AREA	PROJECT COST
Mid-Kings River GSA	Tulare Lake GSP Addendum - 2022	Tulare Lake Subbasin	\$250,000
Mid-Kings River GSA	Draft Revised Tulare Lake GSP - 2024	Tulare Lake Subbasin	\$500,000
South Fork River GSA	SGMA Engineering Support	South Fork Kings GSA	\$150,000
Southwest Kings GSA	SGMA Engineering Support	Southwest Kings GSA	\$50,000
Tri-County Water Authority	SGMA Engineering Support	Tri-County Water Authority	\$225,000
Mid-Kings River GSA	SGM Round 1 Grant Support	Tulare Lake Subbasin	\$200,000
Wyandotte Creek Subbasin	Wyandotte Creek GSP	Butte County	\$220,000
Groundwater Recharge Basin	Stockton GW Recharge - Delta Water	City of Stockton	\$700,000

4. FINANCIAL COMMENTS

A. Credit References

Greyling Ins. Brokerage/EPIC 3780 Mansell Road, Suite 370 Alpharetta, GA 30022

B. Enter the amount of liability insurance typically carried by your firm:

\$1,000,000

C. Enter the amount of errors and omissions insurance typically carried by your firm:

\$8,000,000

D. Indicate proposed fee method and/or schedule: Annual rate schedule

E. Tax Identification Number, DUNS # and federal debarment status:

Tax Identification Number: 59-2355134

DUNS#: 12-249-2390

Federal debarment status: In good standing.

5. REFERENCES

List three California Groundwater Sustainability Agencies for which your firm provided Engineering services. Include the name and telephone number of a contact person who can be queried with regard to your experience and level of service provided:

GSA: Tri-County Water Authority GSA

Contact Person: Deanna Jackson

Phone: (559) 762 - 7240 Email: djackson@tcwater.org

GSA: South Fork Kings GSA

Contact Person: Johnny Gailey

Phone: (559) 906-6229 Email: Johnny@southforkkings.org

GSA: McMullin Area GSA

Contact Person: Matt Hurley

Phone: (559) 515-3339 Email: mhurley@mcmullinarea.org

6. OTHER

Provide any additional information or description of resources your firm feels is pertinent to this Request for Qualifications. Brochures and/or printed information are also acceptable:

7. SIGNATURE FORM


PROPOSAL CERTIFICATION / SIGNATURE

The undersigned certifies that:

Pursuant to and in compliance with this Request for Qualifications, having familiarized myself with the services required, and after carefully reviewing all the terms, conditions and requirements contained therein, the undersigned agrees to furnish such goods/services in accordance with this Request for Qualifications, inclusive of items proposed.

The undersigned declares under penalty of perjury under the laws of the State of California that the representations made in this proposal are true and correct.

Note: ALL ENTRIES SHALL BE LEGIBLE AND SHALL BE TYPEWRITTEN OR PRINTED.



Signature

Amer Hussain - Vice President / Senior Principal

Type or Print Name/Title

October 22, 2024

Date

Geosyntec Consultants, Inc.

Name of Company

1111 E Herndon Ave #217

Address

Fresno	CA	93720
City	State	Zip Code

(559)	256-5859
Area Code	Telephone Number

()	59-2355134
Area Code	Fax Number

Tax Identification Number



Section C

Qualifications

Project Understanding

Geosyntec has been a part of the Tulare Lake Subbasin GSP effort since 2017 and we are deeply familiar with both the history and content of submittals to DWR and SWRCB. Geosyntec has also been involved with the GSP efforts in the adjacent Tule Subbasin, through representing Tri-County Water Authority (TCWA) GSA. The reasons for the current situation relative to the probationary status of the Subbasin are many, and the Tulare Lake Subbasin has, unfortunately, found itself on the “bleeding edge” of the most difficult aspects of the regulatory framework under SGMA. Within the Tulare Lake Subbasin, the wide spectrum of water management needs and practices in each GSA has made agreement on basin-wide policy and technical rationale difficult. In many ways, the groundwater system in the northern portion of the Subbasin (Mid-Kings and South Fork) is distinct from the southern portion (El Rico, TCWA, and Southwest Kings). We support continued alignment between Mid-Kings and South Fork Kings on policies, monitoring, and technical approach to the extent possible. The presence of the two primary population centers in these two GSAs warrants continued collaboration between them, particularly with respect to potable public water supply. We also recognize that Mid-Kings has some unique situations and needs, particularly with respect to the Kings River and the associated irrigation infrastructure managed by the Kings River Water Association (KRWA). Managing the boundary with the adjacent Kaweah GSA is also an important issue for Mid-Kings GSA. Our familiarity with the elements of the Kaweah GSP and our on-going support of South Fork Kings GSA on boundary issues with the Westside GSA will be helpful in this regard.

As the primary author of the most recent Tulare Lake GSP, Geosyntec is very familiar with the various projects and management actions (PMAs) that have been proposed by Mid-Kings and all the other GSAs. Geosyntec worked closely with Mid-Kings to develop the list of the PMAs including the scope and costs of the projects. Geosyntec played a key role in developing the capital and on-going costs associated with implementing the PMAs. This included helping to identify the policies needed to be prepared to implement the GSP. While we did not prepare the existing policies, we understand the importance of updating them to reflect the needs of stakeholders. Geosyntec is also very familiar with the past and most recent groundwater modeling that is being used to support water balance forecasts in the Tulare Lake GSAs. This includes modeling in adjacent GSAs (Kaweah, Tule, and Westside). These models may play an important

Section C: Qualifications

role in the ongoing management and implementation of PMAs, including potential negotiations between GSAs to achieve “mutual” sustainability through management of groundwater pumping.

In addition to SGMA policy and groundwater management expertise, Geosyntec has a strong engineering design practice that addresses various aspects of water infrastructure, including water treatment, hydraulics analysis, civil design, and geotechnical investigation. We are currently working on a multi-benefit recharge and flood management project in the Tule Subbasin that will benefit a historic and severely disadvantaged community (SDAC) while helping the Tule Subbasin achieve long-term sustainability. The project involves design and construction of a series of basins to capture flood waters.

Project Approach

Our first priority will be to prepare and submit a stand-alone GSP for MKGSA that reflects the basin-wide GSP submitted earlier and, as necessary, incorporates specific conditions or actions that MKGSA would like to include in the revised GSP. We have prepared draft stand-alone GSPs for South Fork Kings, Southwest Kings, and Tri-county GSA and are confident we can prepare a stand-alone GSP for MKGSA cost-effectively and quickly.

Once the revised GSP is submitted, our approach to ongoing engineering services is fundamentally based on supporting Mid-Kings GSA with the implementation of the projects and management actions (PMAs) that have been proposed in the most recent GSP, as well as support for (or suggestion of) complimentary tasks that will improve or supplement those PMAs. Mid-Kings GSA proposed 13 projects and management actions in the GSP as follows:

- Project 1: Well Registry
- Project 2: Groundwater Well Meter Policy
- Project 3: Groundwater Pumping “Cap” Policy
- Project 4: MKR GSA Funding
- Project 5: Shallow Well Mitigation Policy
- Project 6: Additional Dedicated Monitor Wells
- Project 7: Expanded Monitoring Network
- Project 8: Esajian Basin
- Project 9: Griswold Basin
- Project 10: New Basin Development
- Project 11: Initial Groundwater Recharge Policy
- Project 12: System Improvements
- Project 13: Land Fallowing

Our overall approach is to provide cost-effective and targeted support for the PMAs currently proposed in the GSP. We expect this contract to be executed on a task-order basis, where we will prepare a proposed scope of work, budget and schedule to support Mid-Kings GSA on one or more projects for approval by the Mid-Kings GSA Board.

Section C: Qualifications

If we are selected for this contract, we recommend that the first task be to develop an internal project implementation plan and timeline that can then be used to develop specific scopes of work, budgets, and schedules for individual projects. The implementation plan would be an internal “road map” that can also be used to communicate with Mid-Kings GSA board members and other stakeholders, including SWRCB and DWR. As part of developing this plan, we will work closely with Mid-Kings GSA leadership to understand resource availability and expertise within Mid-Kings GSA or Kings County that could be used to either lead or support various elements of these projects. We will also develop priorities, critical paths, and linkages between projects or components of projects so that the overall implementation of all PMAs is efficient and streamlined to the extent possible.

Section C: Qualifications

A preliminary concept for this road map is shown below:

<u>Policy Projects:</u>	<u>Example Considerations</u>
Project 2: Groundwater Well Meter Policy	: Meter installation program and timeline to implement
Project 3: Groundwater Pumping “Cap” Policy	: Fee and penalty structures
Project 4: MKR GSA Funding	: Eligibility requirements and timeline for access to funds
Project 5: Shallow Well Mitigation Policy	: Eligibility, verification monitoring and triggers for action
Project 11: Initial Groundwater Recharge Policy	: Acceptable methods, upper vs lower aquifer, crediting

<u>Monitoring and Data Management Projects</u>	<u>Example Considerations</u>
Project 1: Well Registry	: Integration with Kings County databases
Project 6: Additional Dedicated Monitor Wells	: Priority locations, funding capacity, access agreements
Project 7: Expanded Monitoring Network	: GWL vs Subsidence vs Water Quality priorities
Project 13: Land Following	: Incentives, methods of monitoring and crediting

<u>Engineering Projects</u>	<u>Example Considerations</u>
Project 8: Esajian Basin	: Design complete. Monitoring/compliance per recharge policy.
Project 9: Griswold Basin	: Design phase. Monitoring/compliance per recharge policy.
Project 10: New Basin Development	: Design phase. Monitoring/compliance per recharge policy.
Project 12: System Improvements	: Linkage to SMCs and groundwater benefits

For policy-related projects, we recognize the importance of stakeholder outreach. It takes time to engage and inform stakeholders on proposed actions and the implications to individuals or organizations. Stakeholder interactions can range from “brainstorming” sessions; to “strawman” policy discussions; to formal commenting on specific issues. Since we are working with other GSAs on similar policies, we anticipate that we will be able to quickly assemble a “strawman” for internal discussion that can then be fleshed out and adapted or enhanced for specific issues or constraints in Mid-Kings GSA. In addition, current policies will be reviewed and discussed with Mid-Kings GSA leadership to determine if modifications are warranted to existing policy. For example, the current Pumping Cap policy does not explicitly describe the methodology by which a pumping cap is established and the total pumping that would result from the proposed pumping cap. Further integration of the pumping policy with specific monitoring and management plans for groundwater level, subsidence, and water quality may also be warranted to better describe the methodology and circumstances under which the monitoring and management plans could change those pumping caps.

For monitoring projects, we recognize that monitoring represents a significant cost to the GSA, particularly if new monitoring wells or subsidence stations are needed. The structure of the sustainable management criteria for groundwater level and subsidence is based on Representative Monitoring Areas (RMAs), within which one or more monitoring locations are established and used to determine progress toward sustainability. The GSAs have committed to having at least one representative monitoring site (RMS) (e.g. one monitoring well) in each RMA. Currently, Mid-Kings GSA has specified 45 RMS locations for water level, 58 RMS locations for water quality, and 12 locations for land subsidence in the GSP. The GSP also indicates

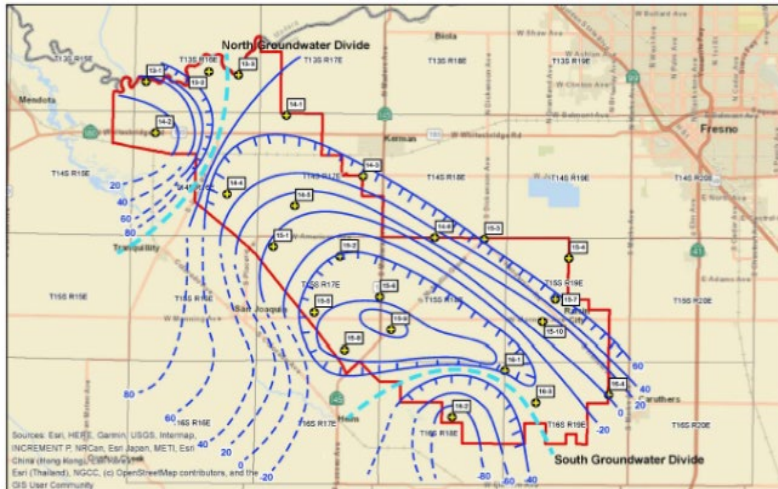
Section C: Qualifications

a commitment to 3 additional RMS locations for water level, 1 additional location for water quality, and 3 additional locations for subsidence. Mid-Kings GSA has already invested in dedicated monitoring wells in the northeastern portion of the GSA that are producing highly valuable data in multiple aquifer zones that is collected automatically using pressure transducers. This is the “gold standard” for monitoring wells and we think that additional dedicated monitoring wells may be warranted in certain areas. While this would entail an initial capital cost, it may also reduce field costs for collecting water-levels and the costs for transducers could be covered through grants. Manual monitoring of wells and many areas will likely continue, especially if wells are not suitable for transducers or landowners do not want the equipment in their well.

There is a significant data management component to implementing the GSP that can be addressed in different ways. Technical data that is used for the Annual Reports (water level and water quality data) is submitted directly to the State, who then upload the data to the California Statewide Groundwater Elevation Monitoring database. This is essentially a “free” database for GSAs to use in managing selected water level data. Data on well completions and location are not required submittals to the State, so Mid-Kings GSA has flexibility on how and where that data is managed. There has been significant interaction between Mid-Kings GSA and Kings County on improving the accuracy of well databases that were maintained separately by the two agencies. Our approach is to continue that collaboration so that the County maintains a database of wells and associated parcels that supports Mid-Kings GSA needs (and other GSAs in Kings County) for well registration, identification of aquifer zones, and the assignment/enforcement of pumping limits on specific parcels.

Mid-Kings GSA has identified several PMAs for using managed aquifer recharge (MAR) projects to increase groundwater recharge using “excess” surface water delivered through the irrigation canal systems. Some of these recharge basins, like the Esiajan, are complete and functional while others, like Griswold, are still in a design phase. Several other locations have been identified as having potential for MAR but have not advanced to the design phase. These are important projects and have so far been funded through DWR grants. Our approach to implementing MAR is to first identify the potential total recharge capacity for these projects and then prioritize implementation based on return on investment, possibly combined with concepts for landowner-financed basin development.

Section C: Qualifications



**McMullin Area GSA
Groundwater Marketing
Study
Kerman, California**



Client

McMullin Groundwater
Sustainability Agency

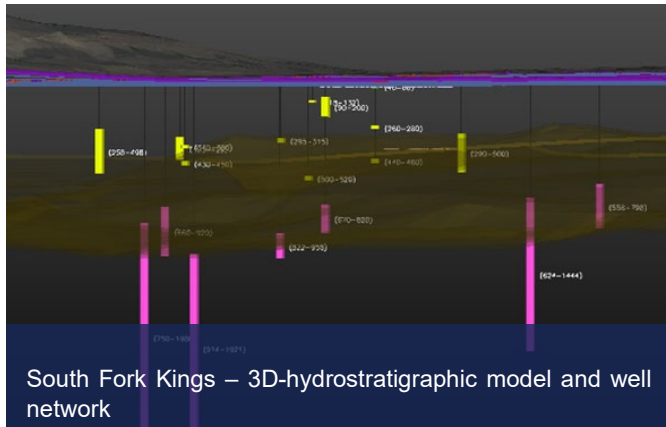


Services Provided

Groundwater Quality Analysis

Geosyntec was lead consultant on a groundwater marketing study for the McMullin Area GSA (MAGSA) funded by the US Bureau of Reclamation’s WaterSmart program. The study was multi-faceted assessment of technical, institutional, and regulatory issues associated with developing a groundwater market within MAGSA. An example of work that is similar to what is requested in the RFP includes an assessment of potential impacts from groundwater exchanges and the location of potential trading zones where market rules would need to be established to avoid impacts to environmental assets or domestic wells. The study also included an assessment of the potential volumes of groundwater that might be traded and the resulting shift in crop types and associated revenues. Finally, the study also included a review of potential surface water imports from the Kings and San Joaquin River systems. Like the Sacramento River, the availability, delivery, and operational constraints on the San Joaquin River surface water supplies are complex and subject to multiple conditions relating to habitat restoration, federally reserved water rights, and complex contracting arrangements with multiple irrigation entities.

Section C: Qualifications



South Fork Kings Groundwater Sustainability Planning Kings County, California



Client

South Fork Kings Groundwater Sustainability Agency



Services Provided

GSP Development Support
Technical Analysis

The South Fork Kings Groundwater Sustainability Agency (SFKGSA) was formed in March 2017 under the requirements of California’s Sustainable Groundwater Management Act (SGMA). Signed into law in 2014, SGMA provides a framework for local governments and water agencies in California to manage groundwater resources and requires groundwater basins to achieve sustainability by the year 2040.

Geosyntec was retained by the SFKGSA to participate in the development of the GSP with the surrounding GSAs within the Tulare Lake Subbasin. Geosyntec initially worked closely with the SFKGSA Board of Directors to establish a funding mechanism for the GSA and then implemented a successful Proposition 218 election within their service area. We then identified and assembled numerous data sources into a Geographic Information System. The GIS includes information on over 1,200 wells, land cover characteristics, water level hydrographs, parcel data, jurisdictional boundaries, and surface water features. In addition to the GIS, we developed a specialized visualization database using EVS software to depict the hydrogeology, water-level fluctuations, and groundwater monitoring network in four-dimensional space and time. We completed a comprehensive description of the physical setting and the current conditions within the groundwater basin, including an analysis of water-level hydrographs, cropping patterns and crop consumptive use calculations, and overall water budgets for the GSA. We helped SFKGSA set sustainability goals for water levels that should prevent untenable overdraft, subsidence, and water quality degradation in the region. Geosyntec identified a monitoring well network for assessment of sustainability indicators in various hydrostratigraphic zones. Geosyntec has engaged SFKGSA with identification of projects and management actions that will address undesirable results from critical overdraft of the groundwater basin. We are developing a white paper on the development of a water trading and marketing platform that would support both overdraft correction and long-term management of sustainable yield.

Geosyntec has provided valuable insight and advocacy for the SFKGSA towards achieving sustainability in the Tulare Lake Subbasin by 2040. Geosyntec was able to help the agency identify realistic sustainability goals. We brought together stakeholders from a diverse cross section of local water users to identify areas where the region could change current practices to prevent groundwater overdraft in the future. Geosyntec has engaged the agency with developing a road map through projects and management actions to achieve sustainability goals by 2040.

Section C: Qualifications



Groundwater Sustainability Plan Preparation & Implementation Kings & Tulare County, California



Client

Tri-County Water Authority



Services Provided

GSP Preparation

SGMA Implementation

Multi-Benefit Land Repurposing

Civil Engineering

Public Outreach

Monitoring Network Design

The Tri-County Water Authority Groundwater Sustainability Agency (GSA) plays a critical role in managing groundwater resources in Kings and Tulare Counties under the Sustainable Groundwater Management Act (SGMA). Since 2019, Geosyntec has supported the Tri-County Water Authority with the development and implementation of its Groundwater Sustainability Plan (GSP).

Key efforts include creating a groundwater allocation profile to gradually reduce pumping from 2020 to 2040, conducting engineering assessments for water storage and recharge opportunities to enhance supply, and coordinating with adjacent GSAs on groundwater flow management and accounting. Geosyntec's expertise in groundwater management strategies has helped Tri-County Water Authority SGMA to establish compliance requirements and advance long-term sustainability goals.

Our efforts include preparing the annual report for the Department of Water Resources (DWR), which documents the GSA's compliance by evaluating hydrogeologic conditions, subsidence, groundwater storage, land cover, cropping patterns, water budgets, and surface water deliveries. We have also collaborated with stakeholders and TCWA to develop a groundwater allocation policy, which involved a comprehensive reevaluation of sustainable yield calculations. This policy aims to provide flexibility for growers while ensuring alignment with the broader strategy of the subbasin. Our ongoing technical support includes installing monitoring wells to address data gaps, coordinating with neighboring basins to update groundwater models, and designing recharge projects. Additionally, we are developing a draft water trading and marketing policy to facilitate overdraft correction and support the long-term management of sustainable yield, helping TCWA achieve its groundwater sustainability objectives.

Notable accomplishments by Geosyntec include the development of a pumping allocation plan to manage groundwater extraction sustainably, including setting pumping limits and creating mechanisms for monitoring and enforcing compliance, as well as establishing an adaptive management framework, through which Tri-County Water Authority and Geosyntec will regularly review and update the GSP based on monitoring results and changing conditions, preparing annual reports documenting progress towards sustainability goals and compliance with SGMA requirements.

Section C: Qualifications

California SGMA Project Experience Matrix

Geosyntec Projects	GSP Preparation	Project Planning	Implementation	Monitoring Well Installation	Permitting	Data Visualization	Funding Opportunities	Civil Design	Public Outreach	Landowner Outreach
Tulare Lake Subbasin GSAs - GSP Development and Agency Interface	✓	✓	✓	✓		✓		✓	✓	✓
Tri-County Water Authority GSA - Multi-Benefit Land Repurposing Program		✓	✓		✓	✓	✓	✓	✓	✓
Tri-County Water Authority GSA - GSP Development and Allocation Policy	✓	✓	✓	✓		✓		✓	✓	✓
South Fork Kings GSA – GSP Development, ASR Pilot Test and GSA Boundary Management	✓	✓	✓	✓	✓	✓	✓	✓	✓	✓
Southwest Kings GSA – GSP Development	✓	✓	✓	✓		✓		✓	✓	✓
Wyandotte Creek Subbasin – GSP Development	✓	✓			✓		✓		✓	✓
Vina Subbasin - GSP Development	✓	✓			✓		✓		✓	✓
Borrego Subbasin GSA – Water Quality components of GSP Development	✓	✓			✓					
McMullin Area GSA - Water Marketing Study		✓	✓				✓		✓	✓
City of Stockton - Groundwater Recharge Basin Investigation and Design		✓	✓		✓	✓	✓	✓	✓	
G Ranch Groundwater Recharge, Habitat Enhancement, & Floodplain Expansion		✓	✓	✓	✓	✓	✓	✓		✓
Glenn County - Recharge Investigation and Design		✓			✓		✓	✓	✓	✓
East Bay GSA - Groundwater Model Development	✓					✓			✓	
Salinas Valley GSA - Groundwater Model Development	✓					✓			✓	
Santa Cruz Mid-County GSA - Well Metering Program		✓	✓			✓	✓		✓	✓
Napa Valley GSA – GSP Implementation Technical Advisory Committee		✓	✓				✓			
Tule Subbasin MLRP		✓				✓	✓	✓	✓	✓

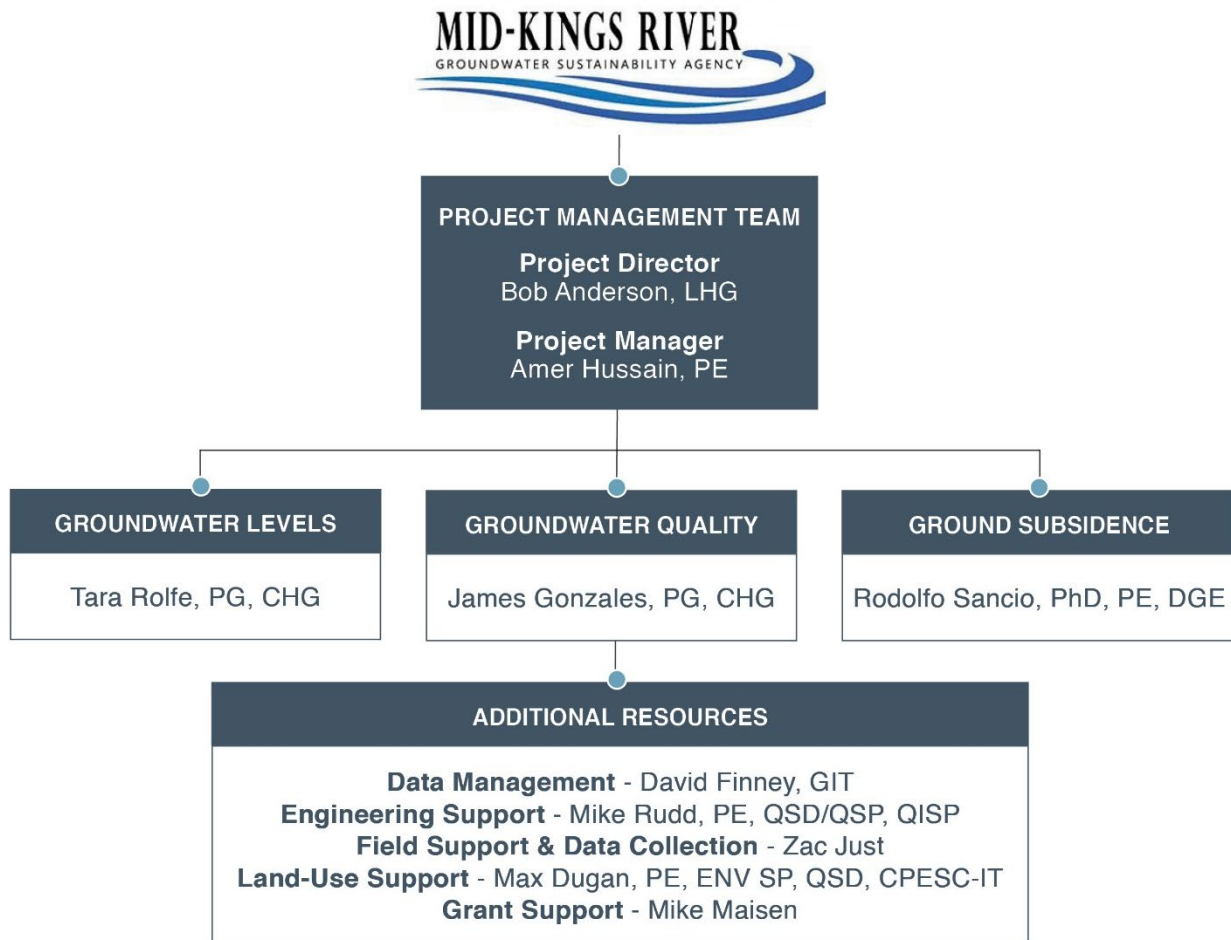
Section C: Qualifications

The Geosyntec Team

Geosyntec has assembled a team of highly qualified professionals to assist Mid-Kings GSA. Mr. Bob Anderson, LHG will function as Project Director and Mr. Amer Hussain, PE will be the Project Manager. They are supported by a team of engineers who will provide extensive groundwater resources and additional services. Additionally, we can support the Mid-Kings GSA’s current public outreach efforts, or work with any selected outreach consultant.

Organizational Chart

Resumes for our staff are included in Appendix A.



Section C: Qualifications

Key Personnel



30 YEARS'
EXPERIENCE



AMER HUSSAIN, P.E., | PROJECT MANAGER

Mr. Hussain is a Senior Principal in Geosyntec's Fresno office and has more than 30 years of experience in the water resources sector in northern and central California. He has led a variety of projects focused on water resources development, water quality, groundwater assessment and remediation, regulatory compliance, and permitting. As a practicing civil engineer in the Central Valley, he has knowledge of farm activities and irrigation practices. In addition, he has close working relationships with the local water supply providers and regulatory agencies. His approach to project management is to understand the client's needs and provide a work product focused on those needs while complying with regulatory requirements.



35 YEARS'
EXPERIENCE



BOB ANDERSON, LHG | PROJECT DIRECTOR

Mr. Anderson has 35 years of professional consulting experience in hydrogeology and geophysics providing technical and project management support to clients in the western U.S. on groundwater resource characterization and management. He has supported public and private clients on a wide variety of surface water and groundwater projects including water supply development, aquifer exploration, water rights, water quality characterization, mining hydrogeology, basin planning, source water protection and regulatory compliance. Bob is respected by regulators and collaborates well with stakeholder groups addressing issues associated with water resources and water quality management. He is an expert on groundwater-surface water interaction and an accomplished modeler across a variety of modeling platforms.

Section C: Qualifications



20 YEARS'
EXPERIENCE



TARA ROLFE, P.G., CHG | GROUNDWATER LEVEL SMC IMPLEMENTATION

Ms. Rolfe has been a hydrogeologist in water resources consulting for both public and private clients for over 20 years. Her technical expertise includes the development and implementation of adaptive management plans, design, and implementation of groundwater and surface water monitoring programs for hydrogeologic or water quality investigations and recharge and resource management, production and monitoring well design, and aquifer testing in bedrock and alluvial environments, groundwater well asset management, and regulatory compliance. Since 2022, Ms. Rolfe has been Secretary and currently serves as the Chair of the AWWA CA/NV's Water Well Technology Committee, developing educational programs on production well siting, design, construction, and maintenance for the water industry through conferences and seminars in California and Nevada.



25 YEARS'
EXPERIENCE



RODOLFO SANCIO, PH. D, P.E., D.GE | SUBSIDENCE SMC IMPLEMENTATION

Dr. Sancio is a senior principal geotechnical engineer with more than 25 years of experience in most areas of geotechnical practice including onshore and offshore geohazard identification, characterization, and mitigation, and geotechnical site investigations and characterization, foundation engineering and ground improvement for large industrial facilities including, site and foundation settlement evaluations, probabilistic and deterministic seismic hazard assessments, static and dynamic slope stability analysis, construction issues related to site preparation and development, earthquake reconnaissance missions and post-earthquake assessment of the performance of earthen structures and foundations, etc. For the past 20 years, Dr. Sancio's experience has focused on onshore and offshore geotechnical engineering and geohazard issues related to the development of large infrastructure projects for the energy industry.

Section C: Qualifications



17 YEARS'
EXPERIENCE



JAMES GONZALES, P.G., CHG | WATER QUALITY SMC IMPLEMENTATION

Mr. Gonzales is an experienced geologist and environmental engineer with a track record of over 17 years in diverse technical and project management roles. He has demonstrated leadership in successfully executing numerous technical projects across the western United States, Puerto Rico, and Mongolia, addressing soil and groundwater contamination from chlorinated solvent, perchlorate, metals, and nitrate sources. Mr. Gonzales has expertise in managing water resources initiatives, encompassing groundwater sustainability plans, basin evaluations, well siting, and production well design. He has extensive knowledge of environmental hydrogeology, including sequence stratigraphy, aquifer delineation, and assessment of chemical contaminants in the subsurface.



Section D **Cost Proposal**

Per the RFQ, we have included our cost proposal in a separate, sealed envelope.

Appendix A - Resumes


Amer Hussain, P.E.
Senior Principal

 **Specialties**

Water Resources Evaluation &
Development
Groundwater Investigation &
Remediation
Civil Engineering
Geotechnical Engineering

 **Education**

M.S., Civil Engineering
B.S., Civil Engineering

 **Registrations &
Certifications**

California Professional Engineer No.
57343

Career Summary

Amer Hussain is a Senior Principal in Geosyntec's Fresno office and has more than 30 years of experience in the water resources sector in northern and central California. He has led a variety of projects focused on water resources development, water quality, groundwater assessment and remediation, regulatory compliance, and permitting. As a practicing civil engineer in the Central Valley, he has knowledge of farm activities and irrigation practices. In addition, he has close working relationships with the local water supply providers and regulatory agencies. His approach to project management is to understand the client's needs and provide a work product focused on those needs while complying with regulatory requirements.

Relevant Project Experience

South Fork Kings GSA SGMA Support, Kings County, CA. Mr. Hussain served as the project manager to support the preparation of the Groundwater Sustainability Plan (GSP) for the GSA that included feasibility analysis of proposed projects. Other responsibilities included extensive public outreach to various stakeholder groups. This included actively engaging with members of the public to address their concerns and incorporate solutions into the document.

Aquifer Storage and Recovery (ASR) Pilot Test, South Fork Kings Groundwater Sustainability Agency. Mr. Hussain is the project manager and senior principal engineer for this ASR Pilot Test being completed for the Tulare Lake Subbasin. The pilot test consists of injecting surface waters from a nearby canal system into an existing supply well and then extracting the water for use in irrigation practices as a test for ASR within the region. Prior to conducting the project, Mr. Hussain prepared a feasibility study for the project that was used to develop a Work Plan that was submitted to the Regional Water Quality Control Board for approval. The Work Plan was approved the ASR pilot test begin in the Summer of 2021. Injection rates for the test range between 600 to 800 gpm.

Completion of Groundwater Sustainability Plans (GSPs) for the Vina and Wyandotte Creek Subbasins, Butte County Department of Water and Resource Conservation (BCDWRC), CA. Mr. Hussain was the lead engineer for completion of these GSPs funded by a DWR-awarded Proposition 1 Grant. As part of this project, Mr. Hussain prepared feasibility studies and cost analyses for proposed projects that included assessment of recharge basins throughout Butte County. Other responsibilities included extensive public outreach to various stakeholder groups. This included actively engaging with members of the public to address their concerns and incorporate solutions into the document.

Confidential Client SGMA Support, Various Counties, CA. Mr. Hussain served as the project manager representing a private agricultural business with multiple landholdings in various GSAs. He was responsible for coordinating their efforts to understand how different GSPs will impact their operations.

Monitoring Network Cardoza Recharge Basin, Tulare Irrigation District, Tulare County, CA. Mr. Hussain assisted the district with the selection and construction of a monitoring well network to evaluate recharge in the district's boundaries associated with recharge basins.

Irrigated Lands Programs, Various Clients, Tulare and Kern Counties, CA. Mr. Hussain served as the project manager for the monitoring and analytical programs for several coalitions. He assisted with the preparation of the updated QAPP documents. In addition, he oversaw the field monitoring crews to ensure quality control.

Engineering (Feasibility) Evaluation, Proposed Recharge Facility, Tulare County, California, Crescent Management, LLC. Mr. Hussain is the project manager and senior principal engineer for this engineering evaluation (feasibility study) of a 60-acre parcel located near the City of Terra Bella, California. The goal of the project was to provide the client with a preliminary feasibility assessment of the site as a groundwater recharge facility prior to purchase of the property. Specific objectives for the project included estimating the rate of recharge that could occur on the site and the expected fate of the recharge water and identifying data gaps needed to fully assess the recharge potential of the Site and provide recommendations for collecting these data.

Monitoring Network Cardoza Recharge Basin, Tulare Irrigation District, Tulare County, CA. Mr. Hussain oversaw the design and construction of a monitoring well network to evaluate recharge in the District's boundaries associated with recharge basins. The evaluation was key to the location of future recharge basins.

Monitoring Program, Madera Irrigation District, Madera, CA. Mr. Hussain oversaw the groundwater monitoring program for evaluating groundwater quality in eastern Madera County. The program included sampling and monitoring wells to evaluate potential impacts of dairy operations in the area.

Database Design, Various Sites. As project manager on numerous groundwater resources projects, Mr. Hussain recognized the importance of a robust database that was designed to expand as the project needs changed. He oversaw a team of programmers that created databases ranging from water quality, well construction, soil lithology, and surface water data.

Process Water Reuse, Confidential Oil and Gas Client, Kern County, CA. Mr. Hussain developed a monitoring program to assist the client with permitting the use of oil field process water for agricultural use. He provided oversight on the treatment system design and implementation. He also prepared the Report of Waste Discharge and the performed the anti-degradation analysis.

Pinedale Groundwater Plume, The Vendo Company, Fresno, CA. Mr. Hussain assisted with the development of various plans, including a half mile forced main pipeline, groundwater capture zone analysis, groundwater data evaluation, and removal action plan implementation.

Sedimentation Evaluation, Buena Vista Storage District, Kern County, CA. Mr. Hussain developed an evaluation of high, medium, and low-risk areas of potential sedimentation within the district's boundaries.

Sedimentation Evaluation, Westlands Water District, Fresno County, CA. Mr. Hussain developed an evaluation of high, medium, and low-risk areas of potential sedimentation within the district's boundaries.

Chlorinated Volatile Organic Compounds Assessment and Remediation, DTSC, Delano, Kern County, CA. Mr. Hussain served as the principal lead for the Delano Groundwater Plume Project. DTSC created the project to further investigate and mitigate the sources of PCE contamination released to soil and groundwater from multiple dry cleaners in the downtown Delano area. Geosyntec is the lead consultant, and provides oversight of multiple source evaluations, identification of potentially responsible parties (PRPs), conducts soil vapor, indoor air, and groundwater investigations, develops remediation approaches, and monitoring and reporting soil gas and groundwater. Project work by Geosyntec has included data compilation from previous investigations, CSM development, and data gap identification. Critical data gaps identified included potential for impacts to City of Delano water supply wells, potential exposure from soil vapor to indoor air, and vertical delineation of PCE near the primary source areas. Geosyntec is currently reviewing the performance of an SVE pilot test, finalizing a PRP search, preparing a Removal Action Work Plan (RAW) for two source areas, supporting the California Environmental Quality Act (CEQA) requirements including Public Notification for the selected removal action, collecting pre-design data including the installation of soil vapor wells and, designing SVE systems to remediate PCE source areas. Geosyntec is also supporting the DTSC in its public participation process by responding to a local action group.

Bob Anderson,
LHG
Senior Principal



Specialties

Water Supply Development
Aquifer Characterization
Groundwater Monitoring
Stream-Aquifer Interaction
Water Rights
Mining & Geotechnical
Geophysics



Education

M.Sc., Hydrogeology and
Geophysics, University of
Wisconsin, Milwaukee, Wisconsin
B.Sc., Geology, University of
Washington, Seattle, Washington



Registrations & Certifications

Professional Geologist with
Hydrogeology Specialty license
(LHG), Washington #636

Career Summary

Mr. Anderson has 35 years of professional consulting experience in hydrogeology and geophysics providing technical and project management support to clients in the western U.S. on groundwater resource characterization and management. He has supported public and private clients on a wide variety of surface water and groundwater projects including water supply development, aquifer exploration, water rights, water quality characterization, mining hydrogeology, basin planning, source water protection and regulatory compliance. Bob is respected by regulators and works well with stakeholder groups addressing issues associated with water resources and water quality management. He is an expert on groundwater-surface water interaction and an accomplished modeler across a variety of modeling platforms.

Relevant Project Experience

Tulare Lake Sub-Basin GSAs, California.

GSP development for the Tulare Lake Basin GSAs. Addressed complex agricultural demand issues, limited surface and groundwater availability, and subsidence. Collaborated with GSA managers, State agency staff, and local stakeholders. Developed visualization, water balance, and tools to communicate groundwater flow patterns and infiltration from the Kings River. Evaluated aquifer storage and recovery (ASR) as a potential planning action to offset groundwater overdraft.

Tri-County Water Authority GSA, California.

GSP implementation support.

McMullin Area GSA, California

Groundwater marketing study funded by USBR WaterSmart Grant.

Vina and Wyandotte GSAs, California

GSP Development support for two GSPs in Butte County.

California Independent Petroleum Association (CIPA)

Tulare Basin Plan Amendment

Columbia Basin Hydrogeologic Investigations and Modeling, Washington State

- USBR Yakima Basin Groundwater Storage Assessment - This project evaluated multiple forms of groundwater storage enhancement using surface infiltration into alluvial aquifers, municipal aquifer storage and recovery (ASR) and deep aquifer storage in basalts. Analyses included groundwater modeling, GIS, and spreadsheet analyses based on conceptual models of the regional aquifer system. Modelling was conducted using FEFLOW.
- Yakima Basin Integrated Plan/Konnowac Pass ASR Assessment – Evaluated the feasibility of regional-scale ASR in the Wanapum Basalt formation underlying Rattlesnake Ridge.
- Spokane (WRIA 55/57) Groundwater modelling – Fully coupled groundwater-surface water model and water balance analysis of the Spokane Valley Aquifer using MIKE-SHE.
- Spokane River Water Quality modelling – Project manager for development of a water quality model of Coeur d’Alene Lake and the Spokane River to support FERC relicense.
- Methow Basin – Multiple projects including one of the first coupled surface water groundwater model in the Upper Methow River using MODFLOW. Also led the early Watershed Planning “Pilot Project” and subsequent WRIA Management Plan. Supported local landowners on groundwater elements of various irrigation water supply and fish habitat enhancement projects.
- Palouse Basin - Prepared a comprehensive technical assessment of hydrology, groundwater, water use, water quality, water rights, and water management strategies.

Puget Sound Basin Hydrogeologic Investigations, Washington State.

- Multiple hydrogeologic and groundwater modelling investigations of the Lower Issaquah Valley Aquifer system for groundwater supply development, wellhead protection planning, and assessment of PFAS contamination. The most recent groundwater flow and transport model was developed using MODFLOW-USG.
- Cross-Valley Water District groundwater model and wellhead protection plan using MODFLOW.
- Regional hydrogeologic analysis and groundwater modelling of groundwater-surface water interaction on the Upper Snoqualmie River. Groundwater modelling was conducted using MODFLOW.
- Technical and regulatory support for City of North Bend water rights and mitigation plan. Included hydrologic analysis and application of MODFLOW groundwater model.
- Technical and planning support for the East King County groundwater management area.
- Preparation of a GIS-based inland oil spill response plan for WRIA-7.
- Assessment of a rare “aquifer break” at a Gravel Quarry near Monroe.
- Snohomish County groundwater management plan, critical recharge area delineations, and support for multiple comprehensive plan updates. Included testimony to Hearing Examiner on Best Available Science for delineation of critical recharge areas.
- Water resources lead for City of Seattle’s South Fork Tolt Reservoir FERC Relicensing, Cedar River Long Term Plan, and Long-term Water Supply Plan Update (on-going). Includes development of groundwater model of the Cedar Moraine using MODFLOW-6.

Tara Rolfe, PG, CHG
Principal

 **Specialties**

Groundwater Resource
Management
Hydrogeology
Well Field Assessments
Groundwater Quality Investigations
Groundwater Wells

 **Education**

B. A., Geology and Environmental
Studies, Occidental College, Los
Angeles, California

 **Registrations &
Certifications**

Certified Hydrogeologist, State of
California, 992

Professional Geologist, State of
California, 8546

Career Summary

Ms. Rolfe has been a hydrogeologist in water resources consulting for both public and private clients for over 20 years. Her technical expertise includes the development and implementation of adaptive management plans, design, and implementation of groundwater and surface water monitoring programs for hydrogeologic or water quality investigations and recharge and resource management, production and monitoring well design, and aquifer testing in bedrock and alluvial environments, groundwater well asset management, and regulatory compliance. Since 2022, Ms. Rolfe has been Secretary and currently serves as the Chair of the AWWA CA/NV's Water Well Technology Committee, developing educational programs on production well siting, design, construction, and maintenance for the water industry through conferences and seminars in California and Nevada.

Relevant Project Experience

Aquifer Storage and Recovery Pilot Test. South Fork Kings GSA, Kings County, CA. Ms. Rolfe provided technical expertise in the implementation of aquifer testing prior to the conducting of an Aquifer Storage and Recovery (ASR) pilot test. The aquifer testing included monitoring of nearby projection and monitoring wells in various aquifer layers, monitoring of groundwater level changes, and water quality at the pumping well and several nearby wells. Aquifer parameters were estimated from the data, and water quality considerations were evaluated. The data were used to plan the injection rate and duration of the injection phase of an ASR pilot test.

Hydrogeologic Services On-Call, Pasadena Water and Power, Pasadena, CA. Ms. Rolfe is currently serving as Project Manager for the Hydrogeologic Services On-Call with the PWP. Starting in 2021, Geosyntec has provided services under three task orders with two PWP engineers, including an interconnection feasibility study for potable water resilience, a well condition assessment (Monte Vista Well), and a well design review for a new potable production well (Explorer Well).

Geosyntec recently partnered again with PWP on a task order to provide support services for the realignment of Explorer Road and the installation of the Explorer Well.

Groundwater RI/FS, Private Client Group, West Covina, CA. Ms. Rolfe is currently the Project Manager for the Groundwater RI/FS hydrogeologic investigations, including multiple concurrent field investigations involving the installation of extraction wells, monitoring wells, core holes for hydrogeologic investigations, water quality sampling and analyses, and aquifer testing. Each investigation requires a work plan(s), coordination with the client group and DTSC, budget and schedule development, permitting, retaining, and implementation of the project with subcontractors, and data analyses and reporting. Since 2022, Ms. Rolfe has managed the project with annual budgets between \$1MM and \$3MM, with 29 to 41 Phases and multiple Phase Managers.

Project Well Design and Installation, Private Client, Los Angeles, CA. Ms. Rolfe served as the Project Manager for the siting, design, and installation of two production wells used for irrigation in the City of Los Angeles, CA. The project included siting the wells to best capture the on-site water resources, considering the hydrogeology, potential influence on other wells, and distribution infrastructure on site. The two wells were designed, installed, tested, and permitted consistent with the plans and regulatory requirements.

Prado Basin Habitat Sustainability Program, Chino Basin Watermaster, Chino Basin, CA. Ms. Rolfe served as the Project Manager for the development and implementation of the 2016 Adaptive Management Plan (AMP) for the Prado Basin Habitat Sustainability Program (PBHSP). The AMP was developed to monitor the potential impacts of controlled overdrafts of the Chino Basin on the riparian habitat in the Prado Basin and provide an adaptive plan to monitor and implement mitigation activities. Implementation of the AMP included 16 new piezometers, a hydrogeologic and biologic monitoring program, and annual data analysis and reporting. Ms. Rolfe coordinated with the stakeholders to approve the 2016 AMP and implement the well installations and monitoring program.

Nitrate Treatment System, La Puente Valley County Water District, La Puente, CA. Ms. Rolfe was the Project Manager for the engineering design, permitting, and construction support services for the installation of a new nitrate treatment system within an existing groundwater treatment plan for potable water.

**Rodolfo Sancio, PHD,
PE, DGE**

Senior Principal



Specialties

Geotechnical Site Investigation
Geohazard Management
Slope Stability Assessments
Foundation Engineering & Ground
Improvement
Seismic Hazard Assessments



Education

Ph.D., Geotechnical Engineering,
University of California, Berkeley,
California
Minors: Structural Engineering and
Seismology
M.S., Geotechnical Engineering,
University of California, Berkeley,
California
Civil Engineer, Universidad Católica
Andrés Bello, Caracas, Venezuela



Registrations &

Certifications

Registered Professional Engineer,
Texas, #97505, Louisiana, #42589,
Mississippi, #30293, New Mexico
#27444, North Carolina #046854,
Ohio #84337, Utah #12251016-2202,
Virginia, #0402059188, Delaware,
#28411, West Virginia, #22952,
Venezuela, CIV 101.646

Career Summary

Dr. Sancio is a senior principal geotechnical engineer with more than 25 years of experience in most areas of geotechnical practice including onshore and offshore geohazard identification, characterization, and mitigation, and geotechnical site investigations and characterization, foundation engineering and ground improvement for large industrial facilities including, site and foundation settlement evaluations, probabilistic and deterministic seismic hazard assessments, static and dynamic slope stability analysis, construction issues related to site preparation and development, earthquake reconnaissance missions and post-earthquake assessment of the performance of earthen structures and foundations, etc. For the past 20 years, Dr. Sancio's experience has focused on onshore and offshore geotechnical engineering and geohazard issues related to the development of large infrastructure projects for the energy industry.

Relevant Project Experience

Feasibility Study for Construction of a Facility to Conduct Large Scale Tests to Evaluate the Effects of Gouging on Buried Submarine Pipelines. Managed a joint industry project (JIP) to develop a preliminary design of a facility to conduct large scale tests to evaluate the effects of gouging on buried submarine pipelines. This required management of a group of companies that conducted numerical modeling studies for estimation of basin dimensions and design of pull capacity requirements, field trials of soil placement procedures, and development of instrumentation programs.

Liquefaction Assessment and Recommendations. Evaluated the likelihood of seismically induced liquefaction at an electrical substation facility located in the San Francisco Bay Area, including prediction of vertical and lateral displacements. Provided advice and recommendations for foundation and ground improvement to reduce the effects of liquefaction.

Angola LNG, Baseline Soils Investigation. Field supervisor and on-site field and laboratory engineer for baseline soils investigation. Analyzed and prepared the data and engineering reports. The project included the reclamation

of 98 hectares of a bay with sand to be sourced from the dredging of a 180-hectare marine turning basin. Prepared the engineering design of foundations, and settlement calculations. Provided recommendations regarding prediction of as-placed sand density, required sand volumes considering underlying highly compressible soft soils, reduction of mud waves during construction, and appropriate side slopes of the reclaimed land. Also provided recommendations on the quality and availability of borrow sand within the adjacent turning basin.

Lost Creek Subdivision, Amenity Lake Design. Designed an amenity lake below the water table. Analysis included seepage calculations and development of a liner system capable of preventing water loss from the lake into the water table and avoiding excessive pressures under the liner caused by the higher elevation of the water table. Field work included carrying out CPTs and slug tests.

Design of Excavation, Dewatering System, and Ground Improvement for River Water Intake Structure, Plant Vogtle, Units 3 and 4. Lead a team of geotechnical engineers that developed a plan for excavation and dewatering to build the River Water Intake Structure located along the banks of the Savannah River and about 20 ft below the water level in difficult hydrogeological conditions. Conducted all calculations for the development of the preliminary design-build plan for dewatering, ground improvement, and stability. This required developing an understanding of the hydrogeology of the site and characterization of stratigraphy, hydraulic conductivity, and strength of soil materials. Also conducted liquefaction analyses and provided recommendations for the design of the ground improvement to mitigate liquefaction under the structure.

Large Scale Model Testing. Carried out and managed the development of the conceptual plan, the implementation, and execution of a large-scale test program to model the effects of ice scours on buried submarine pipelines. The program included measurement of scouring forces, sub gouge displacements, pore water pressure development in sandy soils, and strains induced on a model pipeline. Gouges were as deep as 1 m and as wide as 2.4 m in sandy and clayey soils prepared at various relative densities/shear strengths. Interpreted all the data gathered in the test program and provided recommendations for design of buried submarine pipelines in the Kashagan project.

Back Analysis and Evaluation of the Slope Stability of Future Construction at a Landfill in Mississippi. Conducted slope stability analyses to evaluate the causes that led to the failure of a 120-ft high slope founded on stiff-fissured clay. Responsibilities included identifying the most likely failure mechanism, leading the development of shear strength parameters through back analyses, characterization of the strength and compressibility of the stiff fissured clays, and as design of geotechnical instrumentation to monitor development and dissipation of excess pore water pressures in the clay foundation.

**James Gonzales, PG,
CHG**
Principal



Specialties

Water Quality Investigation
Groundwater Supply & Management
Hydrogeology
Site Assessment & Remediation
Groundwater Well Construction &
Rehabilitation



Education

B.S. Geology, San Francisco State
University, San Francisco, CA
M.S. Environmental Engineering,
California State University Fullerton,
Fullerton, CA



Registrations & Certifications

Professional Geologist, California,
No. 8918

Certified Hydrogeologist, California,
No. 984

Career Summary

Experienced geologist and environmental engineer with a track record of over 17 years in diverse technical and project management roles. Demonstrated leadership in successfully executing numerous technical projects across the western United States, Puerto Rico, and Mongolia, addressing soil and groundwater contamination from chlorinated solvent, perchlorate, metals, and nitrate sources. Proven expertise in managing water resources initiatives, encompassing groundwater sustainability plans, basin evaluations, well siting, and production well design. Possess extensive knowledge of environmental hydrogeology, including sequence stratigraphy, aquifer delineation, and assessment of chemical contaminants in the subsurface.

Relevant Project Experience

Tulare Lake Subbasin Groundwater Sustainability Plan, San Joaquin Valley, California. Contributed to the Tulare Lake Subbasin Groundwater Sustainability Plan (GSP), with primary focus to assess and address the potential impacts of extensive agricultural activities on the groundwater quality in the region. Involved a comprehensive evaluation of basin chemicals of concern, the establishment of minimum thresholds, formulation of measurable objectives, and the development of a robust monitoring framework. The Tulare Lake Subbasin, characterized by a prolonged history of agricultural use, presented unique challenges in terms of managing groundwater resources sustainably.

Geophysical Evaluation for Artesian Groundwater Conditions and Mitigation, Confidential Client, Los Angeles County, San Joaquin Valley, California. Evaluated artesian groundwater conditions and developed an assessment plan to address the challenges posed by a shallow artesian spring-fed aquifer causing flooding in building infrastructure. Currently, designing a surface resistivity study to comprehensively characterize the subsurface conditions and understand the hydrogeological factors contributing to the flooding. Results of the resistivity study will be used to propose mitigation strategies to address the flooding issue including installation of drainage systems.

Groundwater Production and Water Footprint Study, Confidential Food Processing Client, San Joaquin Valley, California. Undertook a project to evaluate regional water quality and groundwater pumping data to provide recommendations for groundwater pumping strategies at a food processing facility. The primary concern was to limit the intake of impacted groundwater, considering both the quality of the water and sustainable groundwater management practices. Conducted a comprehensive analysis of regional water quality data, considering parameters such as contaminant levels, salinity, and other relevant indicators. Analyzed groundwater pumping data for the region, including well extraction rates, drawdown patterns, and historical trends. Conducted a Water Footprint Study for the facility to evaluate the entire water usage cycle, from raw material production to processing and final product distribution. Identify opportunities for water conservation and efficiency improvements by assessing the water footprint of the facility's infrastructure and processing methods.

Monitoring Well Network Design and Installation, Confidential Client, San Bernardino, CA. Provided comprehensive design and construction management services for the meticulous installation of 16 nested and clustered monitoring wells. Prior to initiating field activities, assumed responsibility for well siting within residential and industrial neighborhoods, ensuring compliance with public right-of-way regulations. Additionally, facilitated the acquisition of all necessary permits, including the national pollutant discharge elimination system (NPDES), as well as permits from the city, county, and state entities. Prepared a detailed preliminary well design report and developed technical specifications for drilling and well construction. Managed the solicitation of drill bids, conducted thorough bid analysis, and provided recommendations for contractor selection. During the field implementation phase, maintained a full-time on-site presence, providing 24/7 oversight of the drilling contractor. Analyzed a range of down-hole logs, including geophysical, caliper, deviation, and video survey logs, enabling informed decision-making based on geologic logging data. Oversaw well construction, primary and secondary well development, and managed waste disposal activities, ensuring compliance with solid waste disposal regulations. Implemented monitoring and reporting protocols for NPDES discharge, while also supervising the installation of dedicated submersible pumps for well equipping.

Multi-Port Westbay Well Construction and Data Evaluation, Confidential Client, San Bernardino County, CA. Assessed historical volatile organic compound (VOC) and perchlorate data to identify suitable locations and design three multi-port Westbay groundwater monitoring wells. Undertook a leadership role in overseeing the construction of these three multi-port Westbay groundwater monitoring wells, a process that spanned over a period of 9 months of extensive field work.

Central Coast Blue Groundwater Sustainability Project, Pismo Beach, CA. Delivered comprehensive planning, design, and program management services for a diverse range of professional hydrogeology projects. These initiatives encompassed various aspects such as siting, technical specifications, design, and construction management for a series of injection wells.

Groundwater Supply Evaluation, UC Merced, Merced, CA. Conducted a comprehensive assessment of groundwater supply to provide vital support to UC Merced agricultural activities, encompassing factors such as water availability, underlying hydrogeology, potential well capacity, and water quality analysis for two current production wells. Additionally, evaluated the feasibility of implementing additional wells and pumping operations.

**Max Dugan, PE, ENV SP,
QSD, CPESC-IT**
Senior Engineer



Specialties

Regional Water Planning
Groundwater Management &
Planning
Watershed Management
Funding & Community Engagement
Green Infrastructure



Education

M.S., Civil and Environmental
Engineering, Stanford University
B.S., Civil Engineering, University of
Nevada, Reno



Registrations & Certifications

Registered Civil Engineer, California,
No. C 85985
Certified Envision Sustainability
Professional, ENV SP, No. 62266
Qualified SWPPP Developer,
California, No. C 85985
CPESC-IT, No. 8035, OSHA 24 Hour
HAZWOPER, OSHA 10 Hour
Outreach

Career Summary

Mr. Dugan is a registered civil engineer and certified sustainability professional with more than ten years of professional experience in water and natural resources management, watershed planning, and hydrologic and hydraulic analysis and design. Mr. Dugan's practice spans a range of disciplines where he applies his technical skills and ability to engage with diverse audiences to help address critical issues of water, groundwater, land management, water quality, and resilience and adaptation. As a project manager and technical lead, Mr. Dugan works to build diverse, robust, and responsive teams that tackle our client's biggest challenges and bring innovative ideas, approaches, and tools to bear to develop informed and consensus-based solutions.

Relevant Project Experience

Tule Basin Multi-benefit Land Repurposing Program (MLRP), Tri-County Water Authority, Central Valley, CA, Project Manager. Mr. Dugan is currently leading the development of the Local MLRP Plan for the Tri-County Water Authority as part of the California Department of Conservation's MLRP Block Grant Program. The Plan is intended to identify opportunities to reduce groundwater overdraft in the critically over drafted Tule sub-basin through strategic land retirement, habitat restoration, crop swapping, and transitions to other low or no groundwater land uses such as solar development or dryland farming. A key element of the project is stakeholder engagement and outreach, with multiple workshops, educational programs, and outreach efforts targeted to disadvantaged communities, tribal governments, and other impacted stakeholders. The Local Plan will be included in the Regional Core Plan in collaboration with efforts by other local Groundwater Sustainability Agencies (GSAs), The Nature Conservancy, Audubon California, UC Merced, and numerous conservation trusts and watershed-based partnerships. MLRP will be a key tool in helping Tri-County farmers reduce groundwater overdraft while avoiding negative economic and environmental outcomes from uncoordinated land fallowing or continued overdraft.

Allensworth Multi-Benefit Recharge Basin and Water Security Project, *Tri-County Water Authority, Central Valley, CA, Technical Coordination, Funding, and Outreach.* Mr. Dugan is currently leading technical design, project and stakeholder coordination, grant funding and outreach efforts for a series of projects to support the Disadvantaged Community of Allensworth, the first historically black town, in California. Project funding has been secured through various programs including a DWR SGMA Implementation Grant and project award through the Tule MLRP Block Grant. Additional grant funding through the EPA Community Change program and various state and federal programs is being pursued. Project elements include a wildlife friendly flood control and recharge basin, constructed wetlands, a secondary water tank for the community's potable water system, and passive and active recreation elements. Key project partners include the Audubon Society and the Allensworth Progressive Association.

San Diego Regional Drought Assessment and Water Equity Report (RWER), *County of San Diego Office of Sustainability and Environmental Justice and Watershed Protection Program, California. Technical Lead.* The County of San Diego is currently developing the Regional Water Equity "Water Ways" Report, which assesses the regions (San Diego County, Imperial County, tribal nations, and border communities) water supply portfolio in the context of climate resilience and the "human right to water" equity metrics of reliability, accessibility, affordability, and quality. Strategies are assessed, in alignment with the California Water Supply Strategy, including water recycling, above and below ground storage, desalination, stormwater capture and use, greywater, and policy and project development, under a OneWater umbrella. This effort has been informed by engagement with other local municipalities, non-profits, technical experts, and other stakeholders through more than 25 interviews, multiple community workshops, and ongoing technical working groups.

Green Streets Clean Water Plan, San Diego, California. Mr. Dugan led Geosyntec's team in collaboration with the County of San Diego Watershed Protection Program Staff in developing the Green Streets Clean Water (GSCW) Plan to identify potential Green Streets Opportunities within the unincorporated portions of the County. Project opportunities were identified through a GIS based catchment prioritization process and then assessed for both water quality and community benefits, with water quality benefits including annual load reduction from wet and dry weather runoff quantified using an open-source, web-based modeling tool developed for the project. The Plan identified more than 30 Green Streets opportunities for further evaluation and design and included both an internal (County programs) and external stakeholder engagement process complete with public workshops and development of program branding and educational material.

Solar PV Site Development and Construction Support, Various Confidential Clients, California, Arizona, Michigan, Virginia, and Georgia. Mr. Dugan has supported the development and construction of multiple Solar PV sites throughout the U.S. providing civil site-design, drainage, sediment and erosion control, and site repair and mitigation services for sites impacted by stormwater runoff, extreme events, and onsite and offsite erosion. Typical sites range from smaller 50-acre sites to large 300+ acre sites in both undeveloped desert settings and on former agricultural land.


**Mike Rudd, PE,
QSD/QSP, QISP**
Senior Principal

 **Specialties**

Feasibility Studies
Civil Design
Hydrology & Hydraulics

 **Education**

B.S., Agricultural Engineering,
California Polytechnic State
University
A.A., Mathematics, Columbia
College

 **Registrations &
Certifications**

Professional Civil Engineer,
California, Number 51806
Qualified SWPPP Practitioner and
Developer (QSP/QSD), Number
22717
Qualified Industrial Stormwater
Practitioner (QISP), Registered
Under PE Number 51806

Career Summary

Mr. Rudd is a results-driven leader with expertise in competitive bidding, innovative design, and cost-effective implementation to meet customer demands. He is proficient in formulating strategic vision and consistently providing cost savings via projects and initiatives that finish on time and on budget. Mr. Rudd is a skilled, successful leader able to plan and execute improvement programs and lead diverse cross-functional teams. With over 30 years of experience, he has a keen eye for assessing issues and developing practical solutions. His extensive experience includes managing complex environmental and civil programs involving scoping, costing, risk evaluation, contract negotiation, feasibility studies, permitting, engineering design, construction, and closeout. Mr. Rudd is a capable, competent, integrated team builder and leader who identifies opportunities, evaluates potential risks, and assembles appropriate resources to ensure high-quality project delivery.

Relevant Project Experience

Sutter Avenue Urban Greening Project, Phase 1, San Pablo Department of Public Works, San Pablo, CA. Project Director responsible for project delivery and engineering design. The \$3.5M Project will address flooding, drainage infrastructure improvements, water quality treatment, updated ADA access, and pedestrian safety. Tasks include utility investigation and coordination, geotechnical investigation, groundwater and subsurface contamination assessment, ADA, pedestrian and parking analysis, hydrologic and hydraulic modeling, grant compliance, and design. Design tasks include preliminary design with alternative analysis, facility sizing, development of construction plans, specifications, and engineer's estimate for the proposed GSI facilities.

Boulder Creek Natural Stormwater Treatment and Flood Protection Project, City of Redding, Redding, CA. Principal Engineer responsible for overall project design and development of construction plans, specifications, and estimate of probable costs. This grant-funded, multi-benefit project repurposes three abandoned wastewater treatment ponds to provide flood protection for an elementary school downstream, stormwater capture and

treatment from residential development and Caltrans transportation corridors, and enhancement of public access and environmental education. The project includes full trash capture and stormwater quality treatment for a 100+ acre watershed, public space beautification, recreational enhancements, and anti-littering public outreach within a severely disadvantaged community. Flood protection is provided by diverting high flows from the creek through new box culverts into two 4-acre ponds to help attenuate peak flows and reduce downstream flooding. Water quality improvement and trash capture are provided by capturing and holding stormwater in the third 5-acre pond, allowing trash to be collected and sediment to settle out before it is discharged back into the stream. The project is currently in the preliminary design stage, with construction estimated to be just over \$4 million.

Upper Sand Creek Basin, Contra Costa County Flood Control District, Antioch, CA. Project Manager responsible for the creek restoration portion of the Upper Sand Creek Basin project, a \$10 million flood protection and habitat restoration project constructed in 2013 in Antioch, CA. The basin is the second largest in the Marsh Creek flood protection system, providing 900 acre-feet of storage and significantly reducing the flood risk for Antioch, Brentwood, and Oakley residents living downstream along Sand Creek and Marsh Creek. Prior to the Project, Sand Creek through the basin site was degraded and offered poor habitat. The Project reconstructed and restored 3,600 linear feet of Sand Creek and 10 acres of wetlands.

Winery Canyon Channel-Descanso Gardens Stormwater Capture and Reuse, Safe Clean Water Program (SCWP), La Cañada Flintridge, CA. Mike started working on this project as Project Director for the feasibility study; a comprehensive assessment of proposed water infrastructure features to create more sustainable operations for the Gardens. The study, funded through a grant from Measure W (Los Angeles County), included the diversion of stormwater flows from a Los Angeles County Flood Control District channel to capture, store, and reuse for irrigation, lessening reliance on imported water supply. This project was subsequently awarded \$6.8M in implementation funding through the Program as a result of Mike's efforts and is currently in the final stages of design. Mike is the Project Director on the design team and provides senior leadership and is in responsible charge of the project, which is scheduled to go out to bid in January 2025, with construction beginning later on that same year.

Bijou Area Water Quality Improvement Project, South Lake Tahoe, California. Principal-in-Charge responsible for overall project delivery and QA/QC. This award-winning project was developed to address flood control and stormwater quality entering Lake Tahoe. This stormwater capture and treat project consisted of a 220,000-gallon underground storage vault with trash and sediment removal; 2,000 gpm pump system; 6,500 feet of self-restrained 12" diameter stormwater force main; 1,500 feet of roadway reconstruction; outfall structures; and a stormwater collection and conveyance system. The Project was planned, designed, and bid over a six-year period and completed on schedule and within the allocated planning/design budget. The construction award bid was approximately 3% below the engineer's estimate. Construction costs were just under \$11 million, with planning and design at 15%. This project was awarded best water quality improvement project by the Tahoe Regional Planning agency in 2015.


Mike Maisen
Senior Staff Professional

 Specialties

Water Resources Evaluation
Grant Writing
Water Policy

 Education

BA, English, Santa Clara University

 Registrations &
Certifications

California Professional Engineer No.
57343

Career Summary

Mike is a water resources specialist with expertise in water rights, water policy, and grant writing services. He has over 15 years of experience with water resources, water rights, and environmental planning projects for cities, counties, tribes, and water purveyors throughout the Western US.

Mike has successfully helped clients win and fund over \$5M+ in grant and proposal award funding. He has secured project funding for clients through the U.S. Bureau of Reclamation, NOAA, Washington State Department of Ecology and Department of Commerce among others. He delivers compelling proposals to selection committees by focusing on persuasive storytelling strategies grounded in sound technical details. In connection with the current growing importance of environmental justice (EJ) and equity goals for Federal (e.g., Justice40) and state (e.g., WA HEAL Act) grant programs, Mike keeps current with EJ philosophies and tools, proficient with EJ mapping tools (e.g., EJ Screen), and coordinated environmental justice presentations for internal staff in Q1 2024 with Washington state regulators.

Relevant Project Experience

US. Bureau of Reclamation, WaterSMART Grants, Various, 2020-2024. Mike has written and coordinated four WaterSMART grants for water supply projects for public agency clients with a combined funding ask of \$1M+. These include writing and applying for the Water Strategy grant for three different clients – Selah Moxee Irrigation District, TransAlta Corporation, and Grant County, WA. He also co-wrote grant content for the WaterSMART Cooperative Watershed Management grant for Chelan County, WA.

PFAS Safe Drinking Water/Remedial Action Grant, City of Issaquah, WA, 2024. Mike coordinated grant content for a \$450K grant application to address PFAS concerns in the City of Issaquah's drinking water system. Using EJ Screen and WA Dept. of Health Environmental Health Disparities mapping tools, he screened the project area for a variety of EJ risk factors. Mike created a project-specific EJ summary to respond to the grant criteria.

West Fork Dam Removal Federal and State Funding Applications, City of Hoquiam, WA, 2023-2024. Mike wrote and coordinated grant application material with a team of technical experts for two grant opportunities to fund a dam removal in Hoquiam. The first grant submittal was a \$10M+ grant application for NOAA's Fish Passage Removal Barrier program, and the second was a \$800K application for WA Dept. of Ecology's Streamflow Restoration program.

Proposal Lead and Writer for Public Agencies and Private Industry, Various, 2010-Current. Mike coordinated and led over a dozen winning prime proposal efforts, which included leading proposal meetings, setting schedules, working with technical experts to develop focused technical approach sections, coordinating internal red team reviews, coordinating with graphic design teams, and writing, editing, and submitting final proposals on time. Winning proposals included Affordable Housing Development and Remediation for the Seattle Goodwill site, Geotechnical and Geohazard proposals for a variety of regional WA agencies, and a National Pollutant Discharge Elimination System (NPDES) on-call proposal for the Washington State Dept. of Transportation (WSDOT).

Nooksack Water Rights Adjudication Water Rights and Public Outreach Support, Whatcom County, 2024. Mike provides public-facing water rights support for Adjudication claimants, including covering water rights questions via a public hotline and email. He wrote water rights content for Whatcom County's Adjudication site, created 'how to' video tutorials to help water users calculate acreage, and developed clear and engaging collateral (e.g., flyers and posters) for in-person town hall-style events for Whatcom Water Week and Whatcom Family Farmers events.

Various Water Rights Due Diligence and Analysis, 2023-2024. Mike has performed numerous water right due diligence evaluations and drafted Proofs of Appropriation, Report of Examinations, and permit extension requests for agricultural, private, and municipal clients. This includes coordinating and writing applications for several water banks in Central Washington to submit Water Budget Neutral applications to the Dept. of Ecology.

EIS and SEPA Analysis, Writing, and Technical Editing, Various, 2016 – Current. Mike has performed a variety of EIS analysis and technical writing for State Environmental Policy Act (SEPA) and National Environmental Policy Act (NEPA) associated environmental planning projects. This includes the Programmatic EIS for the \$84M Icicle Strategy in Leavenworth, WA, and Draft EIS for the Mission Ridge Ski Expansion in Wenatchee, WA. Mike has also written several SEPA checklist reports for mining and municipal clients and coordinated and contributed content for the 2023 Statewide WA Dept. of Natural Resources Drought Study.

David Finney, GIT Project Professional



Specialties

Hydrogeology
Ground Water Modeling
Groundwater Monitoring &
Assessment
Data Management
GIS



Education

MS, Geology, California State
University, Sacramento
BS, Geology, California State
University, Long Beach



Registrations & Certifications

California Geologist in Training (GIT)
No. 1698

Career Summary

David Finney is a Geologist in Geosyntec's Sacramento office and has over five years of experience in environmental consulting, specifically sustainable groundwater management and groundwater modeling, monitoring, and assessment. Through his work on multiple water resources projects across Northern California, he has acquired considerable experience in sustainable groundwater management (SGM). David's proficiencies encompass Groundwater Sustainability Plan (GSP) development and implementation under the Sustainable Groundwater Management Act (SGMA) focused remedial investigations, Geographical Information Systems (GIS) spatial analysis, and groundwater modeling.

Relevant Project Experience

Groundwater Sustainability Plan and Annual Monitoring Reports, Tulare Lake Subbasin, Kings County, CA. David has experience in the development of sustainable management criteria for different groundwater sustainability proxies. He contributes to the development of a pro-active approach to monitoring for potential undesirable results. He ensures compliance with reporting requirements, coordinates the collection of GSP annual report data from diverse sources. David also performs data processing and interpretation. He maintains regular communication and coordination with Groundwater Sustainability Managers to ensure timely updates and effective management.

South Fresno Regional Groundwater Plume Remediation, Client, Fresno County, CA. As project manager of an active groundwater remediation site, David's responsibilities include managing the site's cleanup progress and reporting to the Department of Toxic Substances Control (DTSC) in compliance with an onsite enforcement order and an offsite consent order between two parties. The project is in an area historically impacted by industrial groundwater contamination, with surrounding plumes from other sites complicating cleanup goals, plans, and implementation. David works closely with the client and regulators and performs remedial investigations where needed to support the client and move the site toward case closure. David's duties also include satisfying monitoring requirements,

extraction, remediation system management and maintenance, conducting five-year review reporting, and annual reporting. Through effective management, David ensures the project meets all necessary regulatory requirements.

Contaminant Fate and Transport Groundwater Modeling, Client, San Joaquin County, CA. As a part of a project aimed at mitigating groundwater contamination from a plume originating from dry cleaners in a densely urban area, David updated and calibrated a modflow-based fate and transport groundwater model using new water level and water quality monitoring data. Volatile organic compounds (VOCS) and their degradation products chemical parameters were estimated from empirical data. Utilizing the model forecasts, David tested various cleanup strategies and efficiencies to mitigate the contaminant's spread and promote remediation efforts. Through his efforts, the project team could develop an effective remediation strategy, optimize groundwater management techniques, and improve the quality of groundwater resources in the affected area.

Sustainable Groundwater Management Grant Applications, Client, Tulare County, CA. David worked closely with local community leaders and groundwater sustainability agency managers to develop projects aimed at enhancing groundwater conditions for disadvantaged communities. These projects included the installation of a recharge basin and improvements to a floodwater capture system. To fund these projects, David wrote and submitted grant applications to the California Department of Water Resources (DWR), outlining the project details, proposed budgets, and expected outcomes. These projects received DWR funding.

Groundwater Level Monitoring, North American Subbasin GSAs, West Placer and Sutter GSAs, Placer County, CA. David was responsible for conducting groundwater monitoring activities throughout the North American Subbasin to better estimate surface-groundwater connectivity and regional water quality and availability trends. He deployed and maintained an array of transducers and associated data. David assisted in site selection and analysis of various proposed gaging sites to ensure representative monitoring. He collected stream gauge data and analyzed relationships between stream flow, precipitation, and groundwater levels. David analyzed results to determine groundwater recharge and delivered technical reports.

Groundwater Sustainability Plan, Buena Vista Water Storage District, Kern County, CA. David collected, analyzed, interpreted, and confirmed the accuracy of a decade's worth of groundwater quality data from multiple sources and for multiple constituents. He assisted in the writing of narrative portions of GSP, created hydrographs for wells in the GSA, and performed extensive technical editing. Additionally, coordinated administrative elements of the final GSP submission process, including collecting and documenting all baseline information and references, migrating California Statewide Groundwater Elevation Monitoring (CASGEM) data to Sustainable Groundwater Management Act (SGMA), carefully correlating each SGMA article to the pertinent GSP section, and submitting every required element to the online portal.

Zachary Just
Senior Staff Professional

 **Specialties**

Groundwater Sampling, Monitoring
& Assessments
Field Investigation
Water Supply Well Sampling
Stormwater Sampling
Soil Vapor Sampling

 **Education**

BS, Geology, California State
University, Fresno

Career Summary

Zac Just is a Senior Staff Professional in Geosyntec's Fresno office and has over 4 years of experience in groundwater sampling, monitoring and assessments; water supply well sampling; stormwater sampling; soil vapor sampling; and field investigations. Zac has been the assistant geologist for various types of projects throughout California, including evaluation and interpretation of data for technical reports, geophysical evaluations, geological investigations, geologic field mapping and interpretation, borehole logging, soil classifications with an emphasis on Unified Soil Classification System (USCS) classification, and field identification of rocks and minerals.

Relevant Project Experience

Agricultural and Domestic Supply Wells Water Sampling for Disadvantaged Communities, Westlands Water District, Fresno County and Kings County, CA. On behalf of Westlands Water District, Zac annually sampled dozens of agricultural and domestic water supply wells for, pesticides, metals, nutrients, and other compounds. Zac worked directly with stakeholders from multiple disadvantaged communities including Cantua Creek, Three Rocks, Westside, Lemoore Station, and Huron. Zac's responsibilities included collecting GPS coordinates of wells to sub-meter accuracy and site information, field measurements, and photographs as identified in the QAPP. He ensured water samples were sent to the analytical laboratory that met the state's PFAS analysis holding times and completed chain of custody forms for each assigned sample location. Zac entered daily notes of all correspondence with public water systems (PWSs) and uploaded sample forms completed during site visits. Additionally, he provided quarterly progress reports.

Watershed Coordinator, Westlands Water Quality Coalition, Fresno County and Kings County, CA. Zac was the Watershed Coordinator for the Westlands Water Quality Coalition, created as part of the Irrigated Land Regulatory Program to manage potential water quality impairments due to irrigated agriculture. Zac ensured the Coalition, and its members remained in compliance with the Central Valley Regional Water Quality Control Board Waste Discharge Requirements R5-2021-0018 through implementation of water quality sampling and monitoring

plans, encouraging members to implement best management practices, submission of quarterly and annual reports, and participating in regular meetings with Regional Board staff and stakeholders.

Resources Analyst – Westlands Water District. Zac mobilized, coordinated, and led the team responsible for the biannual collection of 2,000+ District groundwater and monitoring wells. He spearheaded collection of hollow-stem auger borings and CPT tests on District geotechnical projects, filing CEQA NOEs, county well permits, and ensuring compliance with grant requirements. Zac digitized, updated and centralized the District's GIS and groundwater well Databases (2,000+ wells, 70+ years of data), transitioning data hosting to an ArcGIS Online Geodatabase. He produced groundwater elevation contour maps for 3 distinct groundwater zones (biannually), District Quarterly Groundwater Conditions memo (groundwater pumping and elevations), numerous GIS reports and monthly Board memos. Zac drafted and reviewed technical documents and reports (SGMA, ILRP, DWR, etc.), providing direction to consultants and summaries to management. He navigated and drove within WWD service area (approx. 600,000 acres, often without cell service) locating wells and project sites. Zac reviewed 40,000+ acres of recharge applications from landowners, prepared memos to management, and made recommendations to management. He created database and management system to host WWD recharge operations, accounting, billing, and groundwater credit allocation.

Altamont Landfill, Waste Management, Altamont, CA. Zac worked under supervision of a Professional Geologist to log soil and rock samples and install 6 water quality monitoring wells and 2 soil vapor monitoring wells to meet Regional Water Quality Control Board requirements at the Altamont Landfill. Zac also oversaw development of the wells and routine sampling.

Appendix B – Related Documents

A close-up photograph of a person's hands holding a blue pen over a desk. The desk is cluttered with various papers, including a spiral-bound notebook with a grid pattern, and a blue water bottle. The lighting is soft and blue-tinted.

Section D

Additional Documents

Geosyntec has produced Tulare Lake GSP documents for the Department of Water Resources and you may find them at the link below:

[Sustainable Groundwater Management Act \(SGMA\) Portal - Department of Water Resources](#)



Geosyntec 
consultants

engineers | scientists | innovators

Offices in Principal Cities of the United States and Select International Locations
geosyntec.com

Agreement No. 24-01

**MID-KINGS RIVER GSA
AGREEMENT FOR SERVICES**

THIS AGREEMENT is made and entered into on November 5, 2024, by and between the Mid-Kings River GSA and **Geosyntec Consultants Inc.**, a **California** Company (“Consultant”) (singularly a “Party,” collectively the “Parties”).

R E C I T A L S

WHEREAS, the Mid-Kings River GSA requires Engineering and other Professional services to assist the Mid-Kings River GSA with day to day operations as well as the preparation of a Groundwater Sustainability Plan (GSP) for the Mid-Kings River GSA which is to include any updates necessary for the GSP based upon direction from the Mid-Kings River GSA Board of Directors or General Manager following the review by the State Water Resources Control Board; and

WHEREAS, Consultant is ready, willing, able, and qualified to perform such services.

NOW, THEREFORE, the Parties agree as follows:

1. SCOPE OF SERVICES

The Mid-Kings River GSA engages Consultant and Consultant shall do, perform, and carry out the services as set forth in **Exhibit A**.

2. RESPONSIBILITIES OF CONSULTANT

Consultant possesses the requisite skills necessary to perform the work under this Agreement and the Mid-Kings River GSA relies upon such skills. Consultant shall, at all times utilizing its ability, experience, and talent, faithfully, industriously, and professionally perform the work set forth in **Exhibit A** to the Mid-Kings River GSA’s reasonable satisfaction. The Mid-Kings River GSA’s acceptance of Consultant’s work does not constitute a release of Consultant from its professional responsibility.

Consultant affirms that it possesses current valid appropriate licensure, including, but not limited to, driver’s license, professional license, certificate of tax-exempt status, or permits, as required to perform the work under this Agreement.

3. COMPENSATION

Mid-Kings River GSA shall pay Consultant in accordance with the attached **Exhibit B**. Consultant is not entitled to, nor will Consultant receive any additional consideration, compensation, or other remuneration.

Upon approval of Mid-Kings River GSA, Mid-Kings River GSA shall pay Consultant monthly in arrears, up to the maximum amount reflected in **Exhibit B**, within thirty (30) days of receipt of timely invoices. Consultant shall submit invoices to Mid-Kings River GSA describing

the services rendered, to whom, the date(s) of service and the charges in a form approved by the Mid-Kings River GSA. Invoices must be documented in such reasonable detail as required by the Mid-Kings River GSA's Auditor to determine the funds were expended for the intended purposes. Consultant shall support its costs by properly executed payrolls, time records, attendance records, billing statements, contracts, detailed ledgers, vouchers, orders, or any other documents pertaining in whole or in part to this Agreement.

Should no funds or insufficient funds be appropriated for this Agreement, the Mid-Kings River GSA reserves the right to propose an amendment or unilaterally terminate this Agreement immediately.

Upon submission of an invoice by Consultant, and upon approval of the Mid-Kings River GSA's representative, the Mid-Kings River GSA shall pay Consultant monthly in arrears, up to the maximum amount provided for in Section 3. Each invoice must include a description of services rendered, to whom, date of service and the charges according to the agreed upon method.

4. TERM

This Agreement commences on the **November 5, 2024** and terminates on **November 5, 2026**, unless otherwise terminated in accordance with its terms.

5. RECORDS AND INSPECTIONS

Consultant shall maintain full, complete, and accurate records with respect to all matters covered under this Agreement. Consultant shall: a) prepare all records in accordance with generally accepted accounting procedures; b) clearly identify and the records; c) keep said records readily accessible; and d) maintain the records for seven (7) years after the termination of this Agreement. Mid-Kings River GSA shall have free access during normal work hours to such records and the right to examine, inspect, copy, or audit them, at no cost to Mid-Kings River GSA.

6. AMENDMENTS

The Parties may modify this Agreement only by a written amendment signed by the Consultant and the Mid-Kings River GSA's Board of Directors ("Board") or other representative as authorized by the Board.

7. TERMINATION

The right to terminate this Agreement may be exercised without prejudice to any other right or remedy to which the terminating Party may be entitled at law or under this Agreement.

A. Without Cause. Either Party may terminate this Agreement without cause by giving the other Party thirty (30) calendar days' written notice of its intention to terminate pursuant to this provision, specifying the date of termination. If the Mid-Kings River GSA's funding for services under this Agreement becomes unavailable, the Mid-Kings River GSA may terminate this Agreement effective immediately.

B. With Cause. This Agreement may be terminated by either Party should the other Party materially breach its duties or responsibilities hereunder. Upon determining a material breach has occurred, the non-breaching Party shall provide written notice to the breaching Party of its intention to terminate this Agreement and inform the breaching Party whether the breach is able to be cured or not.

1) Breach Subject to Cure. Unless otherwise specifically noted in the Notice of Breach, all Notices of Breach shall be deemed subject to this provision. If the non-breaching Party deems the breach of a nature subject to cure, said Party shall allow the breaching Party a period of at least ten (10) calendar days to cure the breach. If the breach is not remedied within the period specified in the Notice of Breach, the non-breaching Party may terminate the Agreement upon further written notice specifying the date of termination.

a. In the event the nature of the breach requires more time than allowed in the Notice of Breach to cure, the breaching Party may submit a written proposal to the non-breaching Party within that period, setting forth a specific plan to remedy the breach and the date certain for completion. If the non-breaching Party assents to the proposed plan in writing, the breaching Party shall immediately commence curing the breach. If the breaching Party fails to cure the breach within said period, the non-breaching Party may terminate this Agreement: i) immediately; ii) on the date specified in the Notice of Breach; or iii) grant the breaching Party additional time to cure.

b. Alternatively, the Mid-Kings River GSA may elect to cure the breach and Consultant shall bear all expenses incurred the Mid-Kings River GSA in curing the breach.

2) Breach Not Subject to Cure. If the non-breaching Party deems the breach is of such a nature as it is not subject to or is incapable of being cured, it shall provide a Notice of Breach to the breaching Party of its intent to terminate this Agreement, in which it shall include a date upon which the Agreement terminates.

C. Effects of Termination. Termination of this Agreement shall not terminate Consultant's obligations or liability to the Mid-Kings River GSA for damages sustained by the Mid-Kings River GSA because of the Consultant's breach, nor the Consultant's duty to indemnify, maintain and make available any records pertaining to this Agreement, cooperate with any audit, be subject to offset, or make any reports of pre-termination contract activities.

D. No Waiver of Breach or Breach by Forbearance. In no event will either Parties' act of forbearance regarding previous acts by the other Party: i) constitute a breach or breach of the Party's obligations under this Agreement; ii) waive a Party's right to assert breach or breach; nor iii) impair or prejudice any remedy available to the non-breaching Party.

8. INSURANCE

A. Requirement to Obtain, Maintain, and Deliver Proof of Insurance. Without limiting the Mid-Kings River GSA's right of indemnification from Consultant or any third parties, Consultant shall purchase and maintain the insurance policies described below (the "Insurance Policy(ies)") prior to the commencement of work or execution of this Agreement. Consultant shall maintain the Insurance Policies throughout the term of this Agreement.

B. Consultant shall deliver an Endorsed Additional Insured page from Consultant's insurance carrier to the Mid-Kings River GSA guaranteeing said coverage to the Mid-Kings River GSA prior to execution of this Agreement, or commencing work. Consultant shall deliver proof of insurance and all endorsements in accordance with this Agreement's Notice Section. Failure to obtain, maintain, or provide the Insurance Policies or proof of the same is a material breach of this Agreement and may result in the immediate suspension or termination of this Agreement for cause, in addition to any other remedies the Mid-Kings River GSA may have under the law.

C. Endorsement of Policies. Consultant shall cause each of the Insurance Policies to be endorsed designating the Mid-Kings River GSA and its Board members, officials, officers, employees, and agents as additional insureds, using ISO form CG 20 26 or an alternate form that is at least as broad as form

CG 20 26, as to any liability arising from the performance of this Agreement.

D. Insurance Limits. Consultant shall obtain the Insurance Policies in the amounts set forth below:

1. Commercial General Liability covering bodily injury, personal injury, and property damage with minimum limits of Two Million Dollars (\$2,000,000) per occurrence and Five Million Dollars (\$5,000,000) annual aggregate.

2. Comprehensive Automobile Liability covering a) bodily injury of not less than Five Hundred Thousand Dollars (\$500,000) per person and One Million Dollars (\$1,000,000) per accident and property damage of not less than One Hundred Thousand Dollars (\$100,000); or b) coverage with a combined single limit of One Million Dollars (\$1,000,000). The Comprehensive Automobile Liability must cover owned and non-owned vehicles used in connection with this Agreement.

3. Workers Compensation as required by the California Labor Code. Consultant shall cause said Insurance Policy to be endorsed to waive the insurer's subrogation rights against the Mid-Kings River GSA.

4. Professional Liability covering Consultant's wrongful acts, errors, and omissions with limits not less than One Million Dollars (\$1,000,000) per occurrence or claim, and Three Million Dollars (\$3,000,000) annual aggregate limit.

E. Rating of Insurers. Consultant shall obtain insurance placed with admitted insurers rated by A.M. Best Co. as A:VII or higher.

G. Notice of Cancellation to the Mid-Kings River GSA and Payment of Premiums. Consultant shall cause each of the Insurance Policies to be endorsed to provide the Mid-Kings River GSA with thirty (30) days' prior written notice of cancellation. The Mid-Kings River GSA is not liable for the payment of premiums or assessments on any Insurance Policies. Cancellation provisions in an Insurance Policy will not be construed in derogation of the continuing duty of the Consultant to maintain the Insurance Policies during the term of this Agreement.

9. INDEMNIFICATION

A. Professional Services. When the law establishes a professional standard of care for Consultant's services, to the fullest extent permitted by law, Consultant shall indemnify, defend, and hold harmless Mid-Kings River GSA and any and all of its Board members, officials, employees and agents from and against any and all losses, liabilities, damages, costs, and expenses, including legal counsel's fees and costs but only to the extent Consultant is responsible for such damages, liabilities, and costs on a comparative basis of fault between Consultant and the Mid-Kings River GSA in the performance of professional services under this Agreement. Consultant shall not be obligated to defend or indemnify the Mid-Kings River GSA for its own negligence or for the negligence of third parties.

B. All Other Services. Other than in the performance of professional services, including agreements where professional services will be provided along with other types of services, and to the fullest extent permitted by law, Consultant shall indemnify, defend, and hold harmless the Mid-Kings River GSA, and any and all of its Board members, officials, employees, and agents from and against any liability (including liability for claims, suits, actions, arbitration proceedings, administrative proceedings, regulatory proceedings, losses, expenses or costs of any kind, whether actual, alleged or threatened, including legal counsel's fees and costs, court costs, interest, defense costs, and expert witness fees), where the same arise out of, are a consequence of, or are in any way attributable to, in whole or in part, any act, omission, fault or negligence, whether active or passive, by Consultant or by any individual or entity for which Consultant is legally liable, including, but not limited to, officers, agents, employees, or subConsultants of Consultant.

C. This indemnification specifically includes any claims that may be against the Mid-Kings River GSA by any taxing authority or third party asserting that an employer-employee relationship exists because of this Agreement.

D. These indemnification obligations shall survive the termination of this Agreement as to any act, omission, fault, or negligence occurring during this Agreement or any extension of this Agreement. The Mid-Kings River GSA's rights to indemnification are in addition to and shall not limit any other rights or remedies the Mid-Kings River GSA may have under law or this Agreement.

10. INDEPENDENT CONSULTANT

Consultant is an independent Consultant and not an agent, officer, or employee of the Mid-Kings River GSA. This Agreement is by and between two (2) independent Consultants and is not intended to, nor will it be construed to create the relationship of agent, servant, employee, partnership, joint venture, or association.

11. COMPLIANCE WITH LAW

Consultant shall comply with all federal, state, and local laws and regulations applicable to its performance including, but limited to, Government Code section 8350 et seq. regarding a drug free workplace, all health and safety standards set forth by the State of California and Mid-Kings River GSA, and the California Public Records Act, Government Code section 7920 et seq.

[If work is being done on Mid-Kings River GSA property unless there is an exception] Prevailing Wage. Option 1: Consultant understands and agrees that the work performed under this Agreement is subject to prevailing wage as set forth in the California Labor Code. Consultant further understands and agrees that it shall bear sole responsibility for ensuring the enforcement thereof including registering with and submitting certified payrolls to the Department of Industrial Relations for compliance monitoring pursuant to Labor Code section 1725.5.]

Option 2: [Consultant is advised that the work will be subject to Labor Code section 1774, and Consultant shall comply fully with all applicable requirements of that statute, as well as all associated rules and regulations of the Department of Industrial Relations or other state agency implementing Labor Code section 1774.]

12. CONFIDENTIALITY

Consultant shall not use Mid-Kings River GSA's confidential information ("Confidential Information") for any purpose other than performing under this Agreement, and Consultant shall prevent the unauthorized disclosure of Confidential Information. Upon receipt of third-party's request to disclose Confidential Information, Consultant shall promptly submit said request to Mid-Kings River GSA.

13. CONFLICT OF INTEREST

Consultant warrants that its board of directors, employees, officers, including the immediate families of each have no financial interest, direct or indirect, that conflicts with rendering services under this Agreement and will not acquire any such financial interest. Consultant shall not employ, nor retain any such person during the term of this Agreement. Consultant is not relieved from personal responsibility under this Section 13 by their associates and employees rendering services. Consultant has an affirmative duty to and shall disclose the name(s) of any person(s) who have an actual, potential, or apparent conflict of interest.

././

14. NONDISCRIMINATION

In rendering services under this Agreement, Consultant shall comply with all applicable federal, state, and local laws, rules, and regulations and shall not discriminate based on age, ancestry, color, gender, marital status, medical condition, national origin, physical or mental disability, race, religion, gender identity, gender expression, sexual orientation, military status, or any other protected basis.

Further, Consultant shall not discriminate against its employees, which includes, but is not limited to, employment upgrading, demotion or transfer, recruitment or recruitment advertising, layoff or termination, rates of pay or other forms of compensation and selection for training, including apprenticeship.

15. SUBCONSULTANTS

[Projects that have or may have subConsultants:] Consultant shall include the following provisions from this Agreement in any and all agreements between Consultant and any subConsultants: a) Section 5, Records and Inspections; b) Section 8, Insurance; c) Section 9, Indemnification; d) Section 11, Compliance with Law; e) Section 12, Confidentiality; f) Section 13, Conflict of Interest; g) Section 14, Nondiscrimination.

16. ASSIGNMENT

Consultant shall not assign this Agreement without first obtaining the written consent of the Mid-Kings River GSA, subject to any required state or federal approval. Assignment by Consultant of any monies due does not constitute an assignment of this Agreement.

17. UNFORESEEN CIRCUMSTANCES

Neither Party shall be responsible for any delay caused by natural disaster, epidemic, pandemic, war, civil disturbance, labor dispute, or other cause beyond the reasonable control of a Party, on the condition the affected Party notices the other Party in writing of the delay's cause within ten (10) of the date the delay began. Thereafter, the Parties shall meet and confer as to whether to amend, suspend, or terminate this Agreement.

18. OWNERSHIP OF DOCUMENTS

The Mid-Kings River GSA owns and is entitled to possess all computations, plans, correspondence, pertinent data, and information gathered by or computed by Consultant prior to this Agreement's termination or upon completion of the work under this Agreement. Mid-Kings River GSA's reuse of any such materials in a manner other than originally intended is at the Mid-Kings River GSA's sole risk. Material prepared in connection with this Agreement is not subject to copyright in the United States of American, or in any foreign state.

19. NOTICE

The Parties shall give any notice necessary to the performance of this Agreement in writing, and delivered by personal delivery, fax, overnight carrier, e-mail with read receipt acknowledgment, or by prepaid first-class mail addressed as follows:

Mid-Kings River GSA
Chuck Kinney, General Manager
1400 West Lacey Blvd., Building #6
Hanford, CA 93230

Consultant
[Name], [Title]
[Company]
[Address].
[Address]

Notice given by: a) personal delivery is effective on the date of personal delivery; b) fax is effective on date of transmittal; c) overnight carrier is effective on the date of delivery; d) email is effective on the date of delivery, with a read receipt; e) first-class mail is effective five (5) days after the date of mailing, or the delivery date on the return receipt, whichever occurs first.

20. CHOICE OF LAW

The Parties executed and delivered this Agreement in the Kings Mid-Kings River GSA, State of California. The laws of the State of California govern the validity, enforceability, and interpretation of this Agreement. Kings County is the appropriate venue for bringing any action in connection with this Agreement, whether in law or equity. Consultant waives any rights it may possess under Code of Civil Procedure Section 394 to transfer any action arising out of this Agreement to a neutral County, or alternate venue.

21. SEVERABILITY

If a court of competent jurisdiction finds any of the provisions of this Agreement unenforceable, the remaining provisions remain enforceable and the unenforceable provisions constitute an amendment to the limited extent required to permit enforcement of the Agreement as a whole.

22. SURVIVAL

The following sections of this Agreement survive its termination: a) Section 5, Records and Inspections; b) Section 8, Insurance; c) Section 9, Indemnification; and d) Section 12, Confidentiality.

23. NO THIRD-PARTY BENEFICIARIES

Unless otherwise specifically stated in this Agreement, the Mid-Kings River GSA and Consultant are the only Parties to this Agreement and the only Parties entitled to enforce its terms. Nothing in this Agreement gives, is intended to give, or will be construed to grant any right or benefit to a third party, directly, indirectly, or otherwise.

24. ADA COMPLIANCE

Consultant shall comply with the Americans with Disabilities Act, Title II, and applicable California state laws. The law providing the greatest degree of access to qualified persons with disabilities shall apply to this Agreement.

25. ENTIRE AGREEMENT; CONTRIBUTIONS OF BOTH PARTIES

This Agreement, including its Recitals and Exhibits, are fully incorporated into and are integral parts of this Agreement. This Agreement constitutes the entire agreement between the Parties. There are no inducements, promises, terms, conditions, or obligations made or entered into by the Mid-Kings River GSA or Consultant, other than those contained in this Agreement.

Each Party had an opportunity to review this Agreement, consult with legal counsel, and negotiate terms. Consultant waives the rule under Civil Code section 1654, that ambiguities in a contract should be construed against the drafter. Civil Code section 1654 has no application to the construction of the Agreement.

26. ELECTRONIC SIGNATURES; COUNTERPARTS

The Parties may execute this Agreement by electronic means, and in two (2) or more counterparts that together constitute one (1) Agreement.

27. AUTHORITY

Each signatory to this Agreement represents it is authorized to enter into this Agreement and bind the Party that its signature represents.

IN WITNESS WHEREOF, the Parties executed this Agreement the day and year first written above.

MID-KINGS RIVER GSA

CONSULTANT NAME

By: _____
Doug Verboon, Chair

By: _____
Name
Title

ATTEST

By: _____
Catherine Venturella, Clerk of the Board

INSURANCE APPROVED

By: _____
Sarah Poots, Risk Manager

APPROVED AS TO FORM
Diane Freeman, Mid-Kings River GSA Counsel

By: _____
Deputy Mid-Kings River GSA Counsel

Exhibits/Attachments:

Exhibit A: Scope of Work

Exhibit B: Compensation/Fees



Date: November 5, 2024

To: Board of Directors
From: Chuck Kinney, General Manager

Subject: Selection of Stakeholder Advisory Committee Members

Background

At your meeting on September 17, 2024, your Board adopted Resolution No. 24-01 which established the Mid-Kings River GSA Stakeholder Advisory Committee. The purpose and function of the Stakeholder Advisory Committee is to advise the Board of Directors regarding policy and procedures of the Authority and development and implementation of the Plan as well as all water matters affecting the Mid-Kings River GSA. The makeup of the Stakeholder Advisory Committee is to have:

1. One member and one alternate member appointed by each Board of Director, of an individual who owns or leases a groundwater well within the appointing Director's district or city (for a total of 6 committee members and 6 alternate members).
2. Five members and five alternate members appointed in total by the election of the Board of Director's. Only one member and one alternate may be selected by the Board of Directors from each of the categories.

To date the Mid-Kings River GSA has received 14 applications by individuals who desire to be on the Stakeholder Advisory Committee. Attached is a spreadsheet indicating all of the individuals whom have applied and which potential categories they qualify to be selected as a member. Also attached are copies of the applications which give additional information for each potential member.

Request

The General Manager requests the Board of Directors review the spreadsheet and attached applications and select/elect those candidates to appoint to the Stakeholder Advisory Committee.

Applicant name	District 1	District 2	District 3	District 4	District 5	City of Hanford	Ag. Row Crop	Ag. Perm. Crop	Confined Animal Operation	Ag. Processor	Well Driller/pump specialist	Shallow Well user	Industrial User	Domestic User	Santa Rosa Rancheria	Disadvantaged Community/Public Water Syster	Environmental User	Non-Profit Org. serving impacted groundwater users	Water District	Irrigation District
Keith Caetano			X				X	X						X						
Kevin Ruble	X			X											X					
Andy Zonneveld			X	X			X	X												
Chip Mello		X			X		X	X	X			X		X					X	
Brian Medeiros				X			X	X	X			X								X
Julie Martella				X				X						X						
Karl te Velde					X		X	X						X						
Helen Sullivan				X	X		X	X												
Mary Lou Silveira			X					X						X						
David Stanfield					X		X	X		X				X						
Sebastian L. Silveira			X		X			X											X	
Matt Brown			X		X		X		X					X						
Mark Tos			X		X		X	X		X				X						
Garrett Gilcrease	X			X			X	X				X		X						

STAKEHOLDER COMMITTEE

The Mid-Kings River Groundwater Sustainability Agency has established a Stakeholder Committee. The Committee is focused on advising the Board of Directors regarding policy and procedures of the Authority and development and implementation of the Plan. Committee members are appointed by the Authority's Board of Directors. Should vacancies develop, the Board will select new members from the applications received.

Date: 10/2/24

Name Keith Caetano

Address 1556 Castro Way Hanford

Phone Number 559 9041637

Employer PointeCastro Nut Company / Self Position Buyer / Farmer

Area(s) of groundwater representation (circle):

Agriculture Row Crop

Shallow Well User

Disadvantaged Community/Public Water System

Agriculture Permanent Crop

Industrial User

Environmental user of Groundwater

Confined Animal Operation

Domestic User

Non-Profit organization serving impacted groundwater users

Agricultural Processor

Santa Rosa Rancheria

Water District

Irrigation District

Well Driller/pump specialist

How are you associated with the interest you've designated above?

Farm 150 acs Trees / 1300 open. ~~Other Ag or other~~

Reason for Applying?

Trying to help come up with Best possible outcome for the situation

Applicable Training, Education and/or Experience?

BS, AG Business - Econ
18+ years ~ 10 years Managment Food Processing
~ 8 years Ag Field Rep.

Community Service, Board, Committee or Commission Experience?

Keith Caetano
Signature

10/2/24
Date

STAKEHOLDER COMMITTEE

The Mid-Kings River Groundwater Sustainability Agency has established a Stakeholder Committee. The Committee is focused on advising the Board of Directors regarding policy and procedures of the Authority and development and implementation of the Plan. Committee members are appointed by the Authority's Board of Directors. Should vacancies develop, the Board will select new members from the applications received.

Date: 10/10/24

Name Kevin Ruble

Address 17225 Jersey Ave Lemoore, CA 93245

Phone Number (559) 977-3686

Employer Tachi-Yokut Santa Rosa Rancheria Indian Community Position General Manager, Tachi Farms

Area(s) of groundwater representation (circle):

Agriculture Row Crop	Shallow Well User	Disadvantaged Community/Public Water System	
Agriculture Permanent Crop	Industrial User	Environmental user of Groundwater	
Confined Animal Operation	Domestic User	Non-Profit organization serving impacted groundwater users	
Agricultural Processor	Santa Rosa Rancheria	Water District	Irrigation District
Well Driller/pump specialist			

How are you associated with the interest you've designated above?

- I am the general manager of the Tachi-Yokurt Tribe's wholly-owned tribal farming corporation.

Reason for Applying?

- I have been directed by the Santa Rosa Rancheria Tribal Council to represent the Tribe's interests in this forum.

Please see the attached statement from the Tribal Council.

- To help develop transparent, manageable, and achievable policies for the constituents of the Mid-Kings River GSA.

Applicable Training, Education and/or Experience?

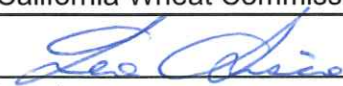
- Farm Management (16 years)

- BS Agricultural Systems Management & Agribusiness Minor - Cal Poly San Luis Obispo

Community Service, Board, Committee or Commission Experience?

- South Fork Kings GSA Grower Advisory Committee Member

- California Wheat Commission District 6 Alternate Commissioner


Signature

10/15/2024
Date

SANTA ROSA RANCHERIA TACHI YOKUT TRIBE

Leo J. Sisco
Chairman

Robert Jeff II
Vice Chairman

Candida L. Cuara
Secretary

Rosa Hernandez
Treasurer

Bryce Baga/Jaime Pimentel
Delegates

Dear Directors of the Mid-Kings River GSA:

As you are aware, the Tachi-Yokut Tribe of the Santa Rosa Rancheria (Tribe) is a federally-recognized Indian Tribe with land located within the boundaries of the Mid-Kings River Groundwater Sustainability Agency (MKRGSA). The Tribe has sovereign, communal, economic, social, and cultural interests in Kings County and has grown to be one of the county's largest employers and contributors. We utilize both surface water and groundwater for domestic, agricultural, and commercial purposes on our rancheria and other land holdings and provide water for off-reservation community uses as well. The Tribe is dedicated to both protecting our own membership and seeing our broader community continue to thrive sustainably, even in the face of the climactic and water supply challenges we all currently face. We also possess federal reserved water rights that need to be respected. In light of all this, the Tribe intends to be an active collaborator and partner in the MKRGSA's work as the MKRGSA, the South Fork Kings GSA, and the other GSAs, stakeholders, and communities that comprise the Tulare Lake Subbasin (TLS) navigate the implementation of the Sustainable Groundwater Management Act and the new water environment into which it has thrust all of it. As part of this commitment to engagement, the Tribal Council has directed Kevin Ruble, the general manager of our tribal farming enterprise, to submit his application to represent the Tribe on the MKRGSA Stakeholder Committee in order to help provide creative solutions that will benefit all parties within the MKRGSA, and the entire TLS, for future generations. Thank you in advance for accepting Mr. Ruble as a member of that Committee.

Sincerely,



Leo Sisco, Tribal Council Chairman
Tachi-Yokut Tribe of the Santa Rosa Rancheria

STAKEHOLDER COMMITTEE

The Mid-Kings River Groundwater Sustainability Agency has established a Stakeholder Committee. The Committee is focused on advising the Board of Directors regarding policy and procedures of the Authority and development and implementation of the Plan. Committee members are appointed by the Authority's Board of Directors. Should vacancies develop, the Board will select new members from the applications received.

Date: 10-8-24

Name Andy Eonneveld

Address 1699 Cerini Ave Laton, CA 93242

Phone Number 559-707-4130

Employer Eonneveld Dairies Inc Position CFO

Area(s) of groundwater representation (circle):

- Agriculture Row Crop
- Agriculture Permanent Crop
- Confined Animal Operation
- Shallow Well User
- Industrial User
- Domestic User
- Disadvantaged Community/Public Water System
- Environmental user of Groundwater
- Non-Profit organization serving impacted groundwater users
- Agricultural Processor
- Santa Rosa Rancheria
- Water District
- Irrigation District
- Well Driller/pump specialist

How are you associated with the interest you've designated above?

Farmer/Dairyman growing corn, wheat, alfalfa, almonds, pistachios and walnuts. Also, I manage a small water system in Fresno County. The water system is a part of our dairy housing and regulated by State.

Reason for Applying?

Contacted by County Supervisor to apply. Also, interested in helping and assisting the MKR GSA board in crafting sustainable groundwater policies that will help the GSA become compliant with state regs, and also ensure basin viability.

Applicable Training, Education and/or Experience?

North Fork Kings GSA committee chair for the Rural Community Advisory Committee since its inception. Farmer and groundwater pumper with knowledge of water uses, needs, flows, trades and agencies.

Community Service, Board, Committee or Commission Experience?

Hanford Christian School Board President. (2) terms
CFO of Eonneveld Dairies Inc. North Fork Kings GSA - RCAC Chair

Andy Eonneveld
Signature

10-8-2024
Date

STAKEHOLDER COMMITTEE

The Mid-Kings River Groundwater Sustainability Agency has established a Stakeholder Committee. The Committee is focused on advising the Board of Directors regarding policy and procedures of the Authority and development and implementation of the Plan. Committee members are appointed by the Authority's Board of Directors. Should vacancies develop, the Board will select new members from the applications received.

Date: _____

Name _____

Address _____

Phone Number _____

Employer _____ Position _____

Area(s) of groundwater representation (circle):

Agriculture Row Crop

Shallow Well User

Disadvantaged Community/Public Water System

Agriculture Permanent Crop

Industrial User

Environmental user of Groundwater

Confined Animal Operation

Domestic User

Non-Profit organization serving impacted groundwater users

Agricultural Processor

Santa Rosa Rancheria

Water District

Irrigation District

Well Driller/pump specialist

How are you associated with the interest you've designated above?

Reason for Applying?

Applicable Training, Education and/or Experience?

Community Service, Board, Committee or Commission Experience?

Signature

Date

STAKEHOLDER COMMITTEE

The Mid-Kings River Groundwater Sustainability Agency has established a Stakeholder Committee. The Committee is focused on advising the Board of Directors regarding policy and procedures of the Authority and development and implementation of the Plan. Committee members are appointed by the Authority's Board of Directors. Should vacancies develop, the Board will select new members from the applications received.

Date: 10/10/2024

Name Brian Medeiros

Address 15360 14th Ave Hanford, CA

Phone Number 559-469-7347

Employer BAR M Ranch, LLC / Medeiros Family Land, LP Position COO

Area(s) of groundwater representation (circle):

- Agriculture Row Crop
- Shallow Well User
- Disadvantaged Community/Public Water System
- Agriculture Permanent Crop
- Industrial User
- Environmental user of Groundwater
- Confined Animal Operation
- Domestic User
- Non-Profit organization serving impacted groundwater users
- Agricultural Processor
- Santa Rosa Rancheria
- Water District
- Irrigation District
- Well Driller/pump specialist

How are you associated with the interest you've designated above?

See Enclosed

Reason for Applying?

See Enclosed

Applicable Training, Education and/or Experience?

See Enclosed

Community Service, Board, Committee or Commission Experience?

See Enclosed


Signature

10/29/2024
Date

Stakeholder Committee Application Answers

Brian Medeiros

How are you associated with the interest you've designated above?

I am a grower, land owner and do some custom farming tractor for outside clients.
I also live on my farm and am a rural domestic well user.

Reason for Applying?

I believe that we need to have adequate and robust representation of our GSA area. I have followed the progression of this GSA aggressively and have had numerous conversations with the previous manager. I believe that we have one of the best positioned GSA's while being in a very difficult area to manage given topography, ground water aquifers and surface water distribution/ownership.

Applicable Training, Education and/or Experience?

I have been a farmer in the Mid-Kings GSA since 1998, on our farm and our surface irrigation system. I sit on the board for Last Chance Ditch Company. I have drilled and developed over 10 wells on the farm ground we have managed. I have successfully recharged surface water in flood runoff years.

Community Service, Board, Committee or Commission Experience?

Historical Board of Director Service for Brian Medeiros

	Service Start	Service End	Position
California Milk Advisory Board	2015	2017	District Director
Dairy Management Inc./National Dairy Board	2013	2017	State Director
Innovation Center for US Dairy	2008	2016	Member
California Dairies Inc.	2014	2017	District Director
Dairy Cares	2015	2016	CDI Representative
Central Valley Dairy Representative Monitoring Program	2014	2017	Director
Kings County Dairy Families	2013	2019	Chair 2014
Western United Dairymen	2012	2016	District Director
CDFA Milk Pooling Producer Review Board	2012	2016	District Representative
Kings County Farm Bureau Young Farmer and Rancher	2008	2014	Co-Chair 2013
Walnut Commission of California	Sep-21	23-Sep	District Director
Delta View Water Association	Mar-22	23-Sep	Director
California Farm Bureau Federation	Dec-21	23-Dec	District Director

Current Board of Director Service for Brian Medeiros

	Service Start	Position
Kings County Farm Bureau- New Executive Director	2011	President 2020-2022
Last Chance Ditch Company	2014	Treasurer
AgWest Farm Credit Local Advisory Committee	2017	Local Advisor
Kings Fair Pledge Foundation	2019	Director Alternate Board
Kings River Water Quality Coalition	2022	Member
Blue Diamond Growers Local Advisory Committee	2024	Local Advisor

STAKEHOLDER COMMITTEE

The Mid-Kings River Groundwater Sustainability Agency has established a Stakeholder Committee. The Committee is focused on advising the Board of Directors regarding policy and procedures of the Authority and development and implementation of the Plan. Committee members are appointed by the Authority's Board of Directors. Should vacancies develop, the Board will select new members from the applications received.

Date: 9/19/24

Name Julie Martella

Address 11782 15th Ave. Lemoore

Phone Number 559-816-7413

Employer Martella Farms Position Farmer, owner

Area(s) of groundwater representation (circle):

Agriculture Row Crop

Shallow Well User

Disadvantaged Community/Public Water System

Agriculture Permanent Crop

Industrial User

Environmental user of Groundwater

Confined Animal Operation

Domestic User

Non-Profit organization serving impacted groundwater users

Agricultural Processor

Santa Rosa Rancheria

Water District

Irrigation District

Well Driller/pump specialist

How are you associated with the interest you've designated above?

I am a small, permanent crop farmer and domestic well user.

Reason for Applying?

I would like to be a part of the process of creating a GSP that accomplishes the goals of SIGMA.

Applicable Training, Education and/or Experience?

I am a farmer, and have been very diligent about understanding our local water issues.

Community Service, Board, Committee or Commission Experience?

KCFB, Seaving Spirits International, Seaving Spirits Canada, Navigating with Hood

Julie Martella
Signature

9/19/24
Date

STAKEHOLDER COMMITTEE

The Mid-Kings River Groundwater Sustainability Agency has established a Stakeholder Committee. The Committee is focused on advising the Board of Directors regarding policy and procedures of the Authority and development and implementation of the Plan. Committee members are appointed by the Authority's Board of Directors. Should vacancies develop, the Board will select new members from the applications received.

Date: 9-28-24

Name Karl te Velde

Address 5142 Denver Ave Kingsburg, CA 93631

Phone Number 559-707-1801

Employer Self Employed Position Owner

Area(s) of groundwater representation (circle):

- | | | | |
|--|---|---|--|
| <input checked="" type="checkbox"/> Agriculture Row Crop | <input type="checkbox"/> Shallow Well User | <input type="checkbox"/> Disadvantaged Community/Public Water System | |
| <input checked="" type="checkbox"/> Agriculture Permanent Crop | <input type="checkbox"/> Industrial User | <input type="checkbox"/> Environmental user of Groundwater | |
| <input type="checkbox"/> Confined Animal Operation | <input type="checkbox"/> Domestic User | <input type="checkbox"/> Non-Profit organization serving impacted groundwater users | |
| <input type="checkbox"/> Agricultural Processor | <input type="checkbox"/> Santa Rosa Rancheria | <input type="checkbox"/> Water District | <input type="checkbox"/> Irrigation District |
| <input type="checkbox"/> Well Driller/pump specialist | | | |

How are you associated with the interest you've designated above?

I am a farmer in ~~the~~ Mid Kings GSA

Reason for Applying?

I am a younger farmer and plan on doing so for many more years. I hope my children will be able to farm in the area as well so I have a large vested interest in future water planning.

Applicable Training, Education and/or Experience?

Community Service, Board, Committee or Commission Experience?

Church consistency
Hanford Christian school board

Karl te Velde
Signature

9-28-24
Date

STAKEHOLDER COMMITTEE

The Mid-Kings River Groundwater Sustainability Agency has established a Stakeholder Committee. The Committee is focused on advising the Board of Directors regarding policy and procedures of the Authority and development and implementation of the Plan. Committee members are appointed by the Authority's Board of Directors. Should vacancies develop, the Board will select new members from the applications received.

Date: Sept. 26, 2024

Name HELEN A. SULLIVAN

Address 14158 Houstead Ave., Hanford, CA 93230

Phone Number (559) 289-2452

Employer SELF Position OWNER of

Area(s) of groundwater representation (circle):

- Agriculture Row Crop
- Agriculture Permanent Crop
- Confined Animal Operation
- Agricultural Processor
- Well Driller/pump specialist
- Shallow Well User
- Industrial User
- Domestic User
- Santa Rosa Rancheria
- Disadvantaged Community/Public Water System
- Environmental user of Groundwater
- Non-Profit organization serving impacted groundwater users
- Water District
- Irrigation District

FARM

How are you associated with the interest you've designated above?

I AM THE OWNER OF SULLIVAN FARMING. I GROW CORN, ALFALFA, SUDAN, ALMONDS & WALNUTS

Reason for Applying?

I AM CONCERNED ABOUT THE FUTURE OF AGRICULTURE IN KINGS CO. & HOW SGMA WILL AFFECT IT.

Applicable Training, Education and/or Experience?

BORN & RAISED ON A FARM. OWNING MY OWN BUSINESS SINCE 1982.

Community Service, Board, Committee or Commission Experience?

FARM BUREAU BOARD MEMBER, BURRIS PARK FOUNDATION BOARD MEMBER, S&A SOUZA FARMS BOARD MEMBER, COMMON THREADS BOARD MEMBER

Signature

Helen A. Sullivan

Date

9/26/24

STAKEHOLDER COMMITTEE

The Mid-Kings River Groundwater Sustainability Agency has established a Stakeholder Committee. The Committee is focused on advising the Board of Directors regarding policy and procedures of the Authority and development and implementation of the Plan. Committee members are appointed by the Authority's Board of Directors. Should vacancies develop, the Board will select new members from the applications received.

Date: 9/23/2024

Name Mark Tos

Address 9240 Excelsior AVE, Hanford, CA 93230

Phone Number (559)816-7869

Employer Tos Farms Position owner & Manager

Area(s) of groundwater representation (circle):

- | | | |
|--|---|---|
| <input checked="" type="checkbox"/> Agriculture Row Crop | <input type="checkbox"/> Shallow Well User | <input type="checkbox"/> Disadvantaged Community/Public Water System |
| <input checked="" type="checkbox"/> Agriculture Permanent Crop | <input type="checkbox"/> Industrial User | <input type="checkbox"/> Environmental user of Groundwater |
| <input type="checkbox"/> Confined Animal Operation | <input checked="" type="checkbox"/> Domestic User | <input type="checkbox"/> Non-Profit organization serving impacted groundwater users |
| <input checked="" type="checkbox"/> Agricultural Processor | <input type="checkbox"/> Santa Rosa Rancheria | <input type="checkbox"/> Water District |
| <input type="checkbox"/> Well Driller/pump specialist | <input type="checkbox"/> Irrigation District | |

How are you associated with the interest you've designated above?

Generational Farmer, born and raised in the GSA, own and manage homes w/ domestic wells in GSA.

Reason for Applying?

Asked by peers and neighbors. I can be quick to listen to those around me, we need to come together with a unified understanding and solution in a productive platform with people who listen to other members.

Applicable Training, Education and/or Experience?

B.S. UC Davis International Ag Development Manager of Permanent and seasonal crops. Understand how much water is needed to farm w/different systems.

Community Service, Board, Committee or Commission Experience?

served on Church Council, and Central valley Christian School board. Currently serving on a workers comp Board of Managers.

Mark W J
Signature

9/23/2024
Date

STAKEHOLDER COMMITTEE

The Mid-Kings River Groundwater Sustainability Agency has established a Stakeholder Committee. The Committee is focused on advising the Board of Directors regarding policy and procedures of the Authority and development and implementation of the Plan. Committee members are appointed by the Authority's Board of Directors. Should vacancies develop, the Board will select new members from the applications received.

Date: 9/23/2024

Name Mary Lou Silveira

Address 14782 Excelsior Hanford Ca

Phone Number 559 280-631

Employer Self Employed

Position Farmer

Area(s) of groundwater representation (circle):

Agriculture Row Crop

Shallow Well User

Disadvantaged Community/Public Water System

Agriculture Permanent Crop

Industrial User

Environmental user of Groundwater

Confined Animal Operation

Domestic User

Non-Profit organization serving impacted groundwater users

Agricultural Processor

Santa Rosa Rancheria

Water District

Irrigation District

Well Driller/pump specialist

How are you associated with the interest you've designated above?

My husband and I farm 60 acres of winegrapes in the Hardwick District of Kings County and live on the ranch.

I have kept my DPR PCA certificate current.

Reason for Applying?

Because of SGMA we converted from flood to drip irrigation starting in 2016. I am a deminimis pumper.

I have attended KCWD and MKRGSA meetings since 2019. I also worked with neighbors nagavitating metering, pumping restrictions, probation hearings and the 218 election. I continue to attend KCWD and KC MKRGSA. I follow surrounding GSA meetings.

Applicable Training, Education and/or Experience?

I am a 1978 ABM graduate of Cal Poly SLO. I was a PCA for 13 years for Souza's Enterprises. I taught

Math and Science for 22 years for Corcoran Unified School District. I have farmed winegrapes for 42 years.

DWR states 24 acres of my farm is in the Disadvantaged Community of Hardwick.

Community Service, Board, Committee or Commission Experience?

Currently I serve as Secretary of the Kings County Republican Central Committee. I was a member of

Mc Carthy Parents Club for more than 20 years. I am a Farm Bureau member.

ML Silveira

Signature

9/24/2024

Date

STAKEHOLDER COMMITTEE

The Mid-Kings River Groundwater Sustainability Agency has established a Stakeholder Committee. The Committee is focused on advising the Board of Directors regarding policy and procedures of the Authority and development and implementation of the Plan. Committee members are appointed by the Authority's Board of Directors. Should vacancies develop, the Board will select new members from the applications received.

Date: 9-20-2024

Name David Stanfield

Address 2134 Pleasant Way Hanford CA 93230

Phone Number 559-904-1621

Employer Summerfield Farms LLC

Position Manager

Area(s) of groundwater representation (circle):

Agriculture Row Crop

Shallow Well User

Disadvantaged Community/Public Water System

Agriculture Permanent Crop

Industrial User

Environmental user of Groundwater

Confined Animal Operation

Domestic User

Non-Profit organization serving impacted groundwater users

Agricultural Processor

Santa Rosa Rancheria

Water District

Irrigation District

Well Driller/pump specialist

How are you associated with the interest you've designated above?

At Summerfield Farms we farm Row crops and walnuts, as well as extensive custom Ag operations in a range of crops including the operation of our Walnut Huller & Dryer. We also have several Domestic wells on the farm and other properties.

Reason for Applying?


Water is the future of ours and other Ag operations. We desperately need clarity and a path forward. I've been engaged with this issues for many years now and have a strong rapport with local growers.

Applicable Training, Education and/or Experience?

Attended many Irrigated Lands and Water Quality trainings. I conduct annual ILRP reporting and monitoring for our 600 managed acres. I also have extensive Food Safety & Quality Control training (water is a critical component of both).

Community Service, Board, Committee or Commission Experience?

Current Office of Board of Directors @ Western Ag Processors Association, Committe Member for CA Walnut Board Sustainability. Office Board of Directors for Kings Gospel Mission. Past board member and active member FBH.



Signature

9-20-2024

Date

STAKEHOLDER COMMITTEE

The Mid-Kings River Groundwater Sustainability Agency has established a Stakeholder Committee. The Committee is focused on advising the Board of Directors regarding policy and procedures of the Authority and development and implementation of the Plan. Committee members are appointed by the Authority's Board of Directors. Should vacancies develop, the Board will select new members from the applications received.

Date: 9/18/2024

Name Sebastian L. Silveira

Address 9249 Flint Ave, Hanford, CA 93230 14782 Excelsior Avenue Hanford, CA 93230

Phone Number (559)836-1805

Employer Gladstone Land Position Land and Resources Manager

Area(s) of groundwater representation (circle):

Agriculture Row Crop

Shallow Well User

Disadvantaged Community/Public Water System

Agriculture Permanent Crop

Industrial User

Environmental user of Groundwater

Confined Animal Operation

Domestic User

Non-Profit organization serving impacted groundwater users

Agricultural Processor

Santa Rosa Rancheria

Water District

Irrigation District

How are you associated with the interest you've designated above?

I grew up and work for a company with farms in the GSA. Personally and professionally, I want to ensure that SGMA is implemented in a way that keep the most amount of farmers farming and managers resources well.

Reason for Applying?

There needs to be better policy to manage our water resources. The previous GSA administration did little to accomodate other growers concerns. We need to listen to growers and their ideas in order to effectly manage our resources.

Also I would consider being an alternate on the stakeholder committee

Applicable Training, Education and/or Experience?

Water lawyer, work experience in 26 GSA's across across California, attended MKRGSA meetings since 2018

Community Service, Board, Committee or Commission Experience?

Sebastian Silveira
Signature

September 20, 2024

Date

STAKEHOLDER COMMITTEE

The Mid-Kings River Groundwater Sustainability Agency has established a Stakeholder Committee. The Committee is focused on advising the Board of Directors regarding policy and procedures of the Authority and development and implementation of the Plan. Committee members are appointed by the Authority's Board of Directors. Should vacancies develop, the Board will select new members from the applications received.

Date: 9-20-2024

Name Matt Brown

Address 924 Margaret Circle Hanford CA 93230

Phone Number 559-816-1720

Employer Browns Dairy Position Owner/Partner

Area(s) of groundwater representation (circle):

- | | | | |
|---|---|---|--|
| <input checked="" type="checkbox"/> Agriculture Row Crop | <input type="checkbox"/> Shallow Well User | <input type="checkbox"/> Disadvantaged Community/Public Water System | |
| <input type="checkbox"/> Agriculture Permanent Crop | <input type="checkbox"/> Industrial User | <input type="checkbox"/> Environmental user of Groundwater | |
| <input checked="" type="checkbox"/> Confined Animal Operation | <input checked="" type="checkbox"/> Domestic User | <input type="checkbox"/> Non-Profit organization serving impacted groundwater users | |
| <input type="checkbox"/> Agricultural Processor | <input type="checkbox"/> Santa Rosa Rancheria | <input type="checkbox"/> Water District | <input type="checkbox"/> Irrigation District |
| <input type="checkbox"/> Well Driller/pump specialist | | | |

How are you associated with the interest you've designated above?

Own Ag Row Crop Farming Operation, own a confined Site facility that is leased out.
Surface water user in Mid Kings GSA. Domestic Water user in the City of Hanford.

Reason for Applying?

I have a stake in the Mid Kings GSA.
I have long term economic concerns for my business, the local Ag industry, the County of Kings, and the City of Hanford.
A poorly implemented plan will be a driver of economic issues for the above.

Applicable Training, Education and/or Experience?

n/a

Community Service, Board, Committee or Commission Experience?

n/a

Matt B
Signature

9-20-2024
Date



STAKEHOLDER COMMITTEE

The Mid-Kings River Groundwater Sustainability Agency has established a Stakeholder Committee. The Committee is focused on advising the Board of Directors regarding policy and procedures of the Authority and development and implementation of the Plan. Committee members are appointed by the Authority's Board of Directors. Should vacancies develop, the Board will select new members from the applications received.

Date: 10/03/2024

Name Garrett Gilcrease

Address 14621 16th avenue

Phone Number 5596781000

Employer Gilcrease Farms/Pure Agronomics Position Manager

Area(s) of groundwater representation (circle):

- Agriculture Row Crop
- Agriculture Permanent Crop
- Confined Animal Operation
- Agricultural Processor
- Well Driller/pump specialist
- Shallow Well User
- Industrial User
- Domestic User
- Santa Rosa Rancheria
- Disadvantaged Community/Public Water System
- Environmental user of Groundwater
- Non-Profit organization serving impacted groundwater users
- Water District
- Irrigation District

How are you associated with the interest you've designated above?

I am a grower and consultant who works with large and small farms alike to increase efficiency, maintain ROI and utilize water in the most efficiency manner possible.

Reason for Applying?

I want to be a part of the solution.

Applicable Training, Education and/or Experience?


B.S. Plant Science and Agronomy - CSUF

M.S. Agronomy and hydrology - Iowa State University

PCA/CCA Licenses.

Community Service, Board, Committee or Commission Experience?

KCFB Vice President, FBH Executive Board and Stewardship Chair


Signature

10/03/2024
Date



Date: November 5, 2024

To: Board of Directors
From: Chuck Kinney, General Manager

Subject: Selection of Stakeholder Advisory Committee Members

Background

On November 14, 2023, The United States Bureau of Reclamation published a funding opportunity for the WaterSMART Water and Energy Efficiency Grant (WEEG). This Grant was released with two rounds of funding. Round one had an application due date on February 22, 2024, and Round two has Application due date on November 13, 2024. In conversations with the General Manager of the South Fork Kings GSA we have discussed the possibility of submitting a joint application to apply for funding from this grant to help with the purchasing of water meters within both of our GSA areas. When looking into this grant it appears to be a highly competitive process which typically does not result in a grant being approved on the first application. That being said in discussions with the South Fork Kings GSA General Manager we discussed how we could make an application together while keeping expenses low for both GSA's. The South Fork Kings GSA General Manager committed to their Engineering consultant providing technical assistance where needed within the grant and I offered to write the grant application as Mid-Kings River GSA's contribution. The proposal is to write a grant application in the amount of two million dollars for the purchase of water meters to be installed upon wells within each of our GSA's. If awarded the grant would provide for one million dollars to be spent within each of the two GSA's. It is important to note that the WaterSMART Grant does require matching funds to be provided in the amount of 50% of the total grant. Since the grant award date is in October of 2025 we are hopeful to have an approved GSP in place together with an approved 218 election which would pay for the required matching funds. If we are successful with the grant application, I would come back to your Board to request the Chairperson be authorized to sign a resolution to accept the grant; therefore, if the GSP is not approved or if a 218 election has not been successful then you would have the opportunity at that time to reject acceptance of the grant.

Request

The General Manager requests the Board of Directors authorize the General Manager to fill out an application, sign all required forms for the application and to work with the South Fork Kings GSA to submit a WaterSMART Water and Energy Efficiency Grant in the amount of two million dollars for the purchase of meters which would be installed on wells within each of the two GSA's.