



KINGS COUNTY

STATE OF THE COUNTY ADDRESS

OCTOBER 10, 2024



WELCOME



JULIETA MARTINEZ, KINGS EDC PRESIDENT



PRESENTATION OF THE FLAGS & PLEDGE OF ALLEGIANCE

KINGS COUNTY SHERIFF HONOR GUARD



**SPONSOR
RECOGNITION**



JULIETA MARTINEZ, KINGS EDC PRESIDENT



KINGS EDC PRESENTS:



2024

State of the County

Preserving the Past for the Future



BRONZE SPONSORS





SILVER SPONSORS





GOLD SPONSORS





PLATINUM SPONSORS





PLATINUM SPONSOR REMARKS

TIM HAYDOCK, OPERATIONS EXECUTIVE



Adventist Health

State of Kings County | October 2024

Adventist Health | Networks and Service Areas

Northern California Network

Adventist Health Lodi Memorial
 Adventist Health and Rideout
 Adventist Health Sonora
 Dameron Hospital*

North Coast Service Area

Adventist Health Clear Lake
 Adventist Health Howard Memorial
 Adventist Health Mendocino Coast
 Adventist Health St. Helena
 Adventist Health Ukiah Valley
 Adventist Health Vallejo

Central Coast Service Area

Adventist Health Sierra Vista
 Adventist Health Twin Cities

Southern California Network

Adventist Health White Memorial
 Adventist Health White Memorial Montebello

Glendale & Simi Valley Service Area

Adventist Health Glendale
 Adventist Health Simi Valley

Oregon Service Area

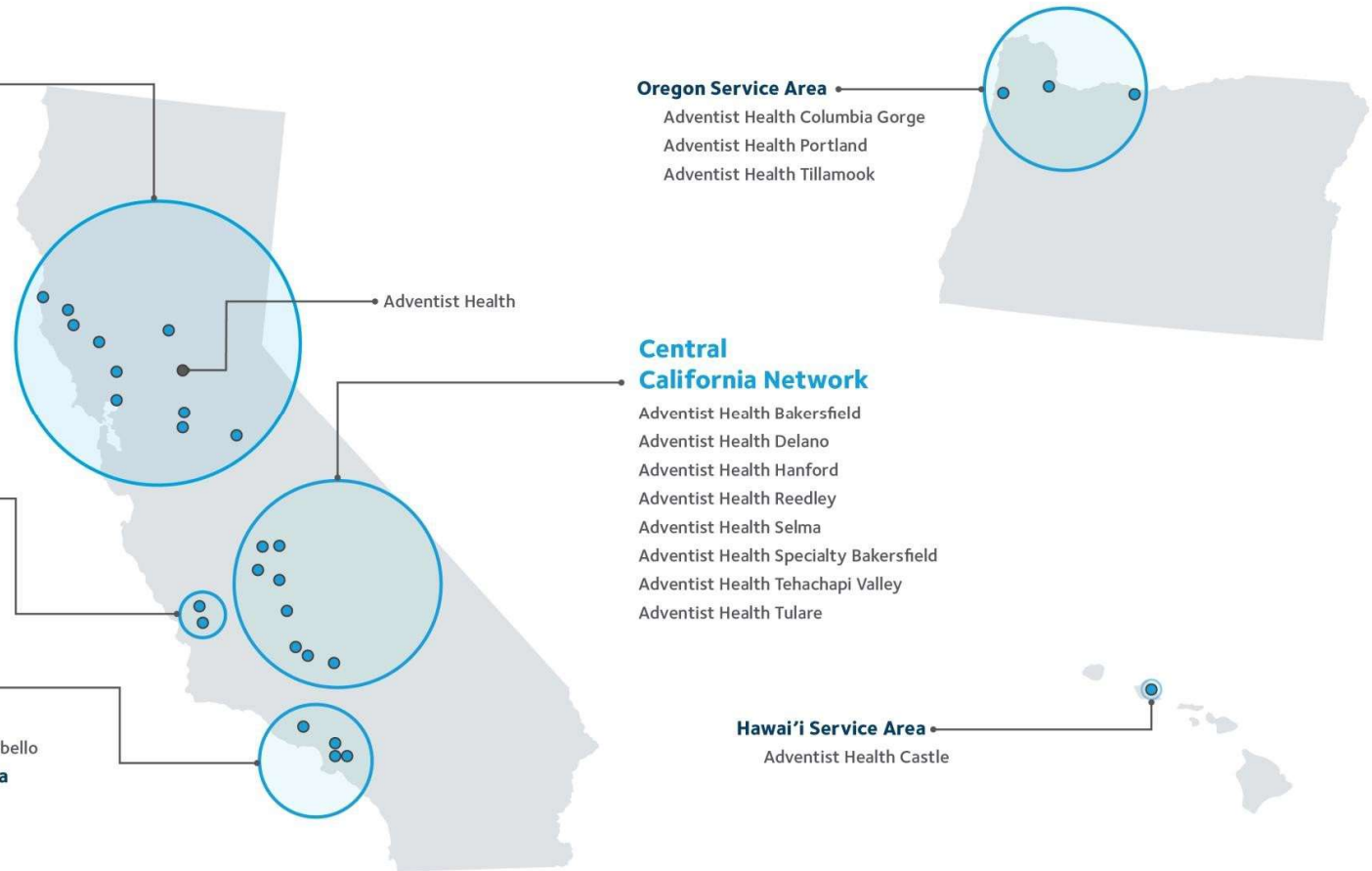
Adventist Health Columbia Gorge
 Adventist Health Portland
 Adventist Health Tillamook

Central California Network

Adventist Health Bakersfield
 Adventist Health Delano
 Adventist Health Hanford
 Adventist Health Reedley
 Adventist Health Selma
 Adventist Health Specialty Bakersfield
 Adventist Health Tehachapi Valley
 Adventist Health Tulare

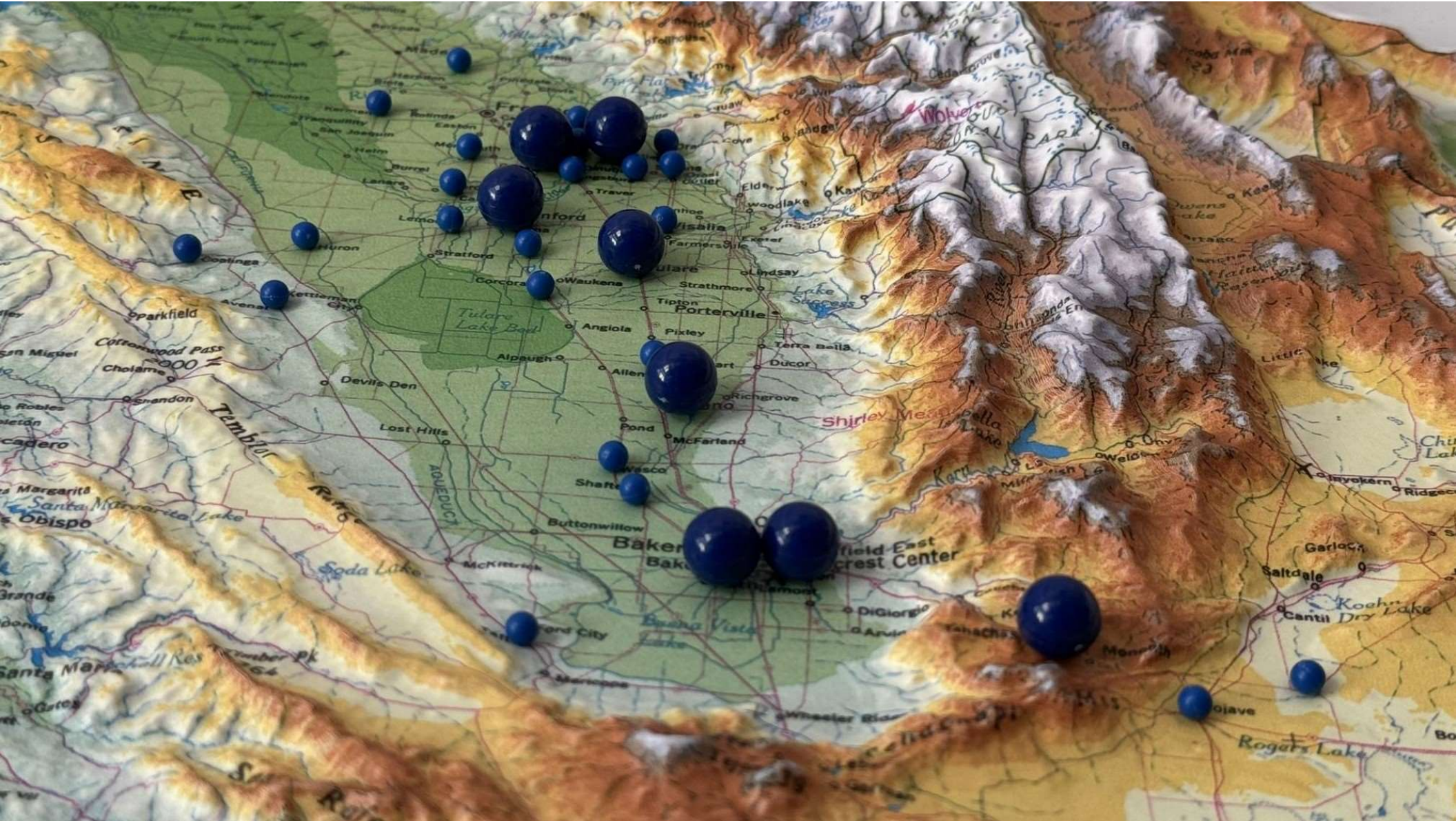
Hawai'i Service Area

Adventist Health Castle



*Managed by Adventist Health





Patient Safety - Top Decile in the Nation for Prevention of Safety Events





Metabolic and
Bariatric Surgery
Accreditation and
Quality Improvement
Program Accredited



American Heart Association.

2024

GET WITH THE GUIDELINES.

GOLD PLUS

TARGET: TYPE 2 DIABETES HONOR ROLL

STROKE

blue
california



Blue Distinction.[®]
Center+
Knee/Hip

AMERICAN COLLEGE
OF EMERGENCY PHYSICIANS

ACCREDITED

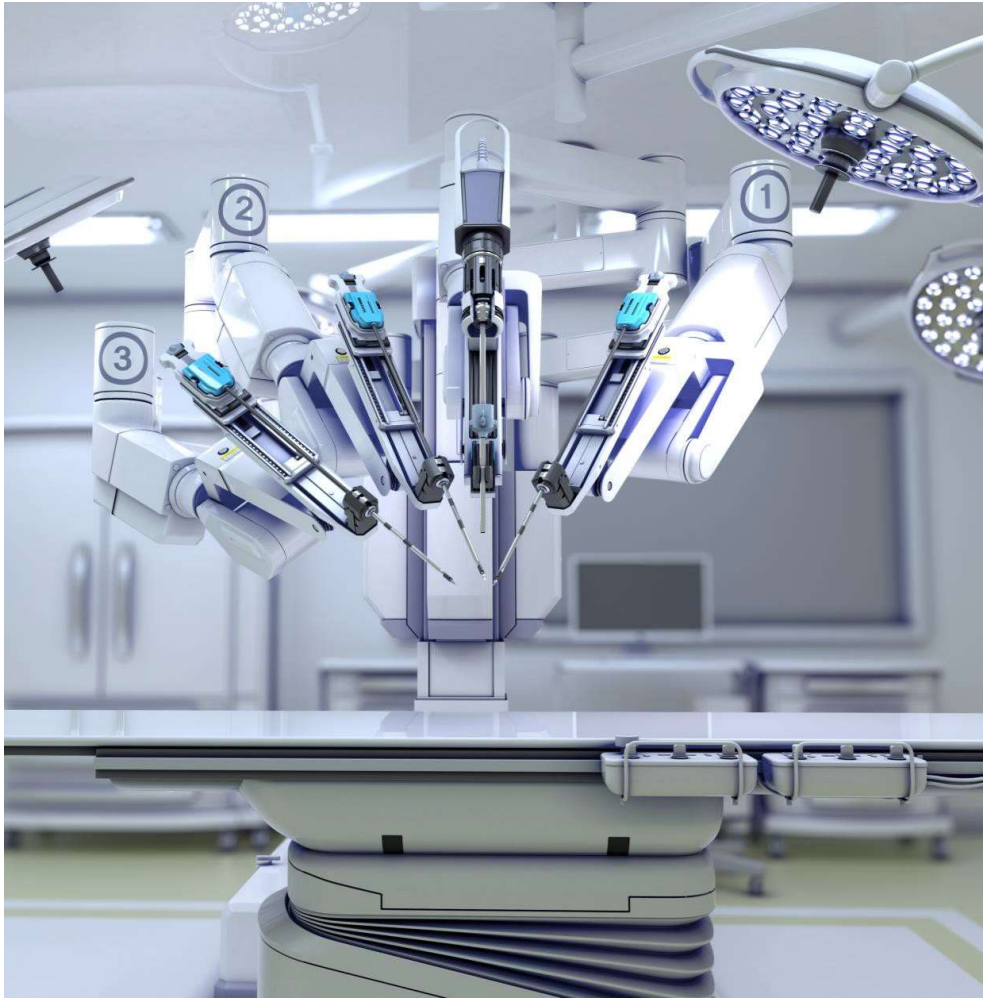
GERIATRIC
EMERGENCY DEPARTMENT



Abraham J. Khan, M.D.
Minimally Invasive
Gynecologic Surgeon

Usman Rahim, M.D.
Gastroenterology and
Hepatology Specialist





Adventist Health Hanford
implants
world's smallest pacemaker



Dr. Sukhvinder Bhajal, M.D.
Cardiac Electrophysiologist
Dr. Sukhvinder Bhajal, M.D.
Cardiac Electrophysiologist





New Corcoran Medical Office Open







**INVITED
SPEAKER**



STEVE HAUGEN, WATERMASTER, KINGS RIVER WATER ASSOCIATION

Kings River Water Association

Kings County State of the County

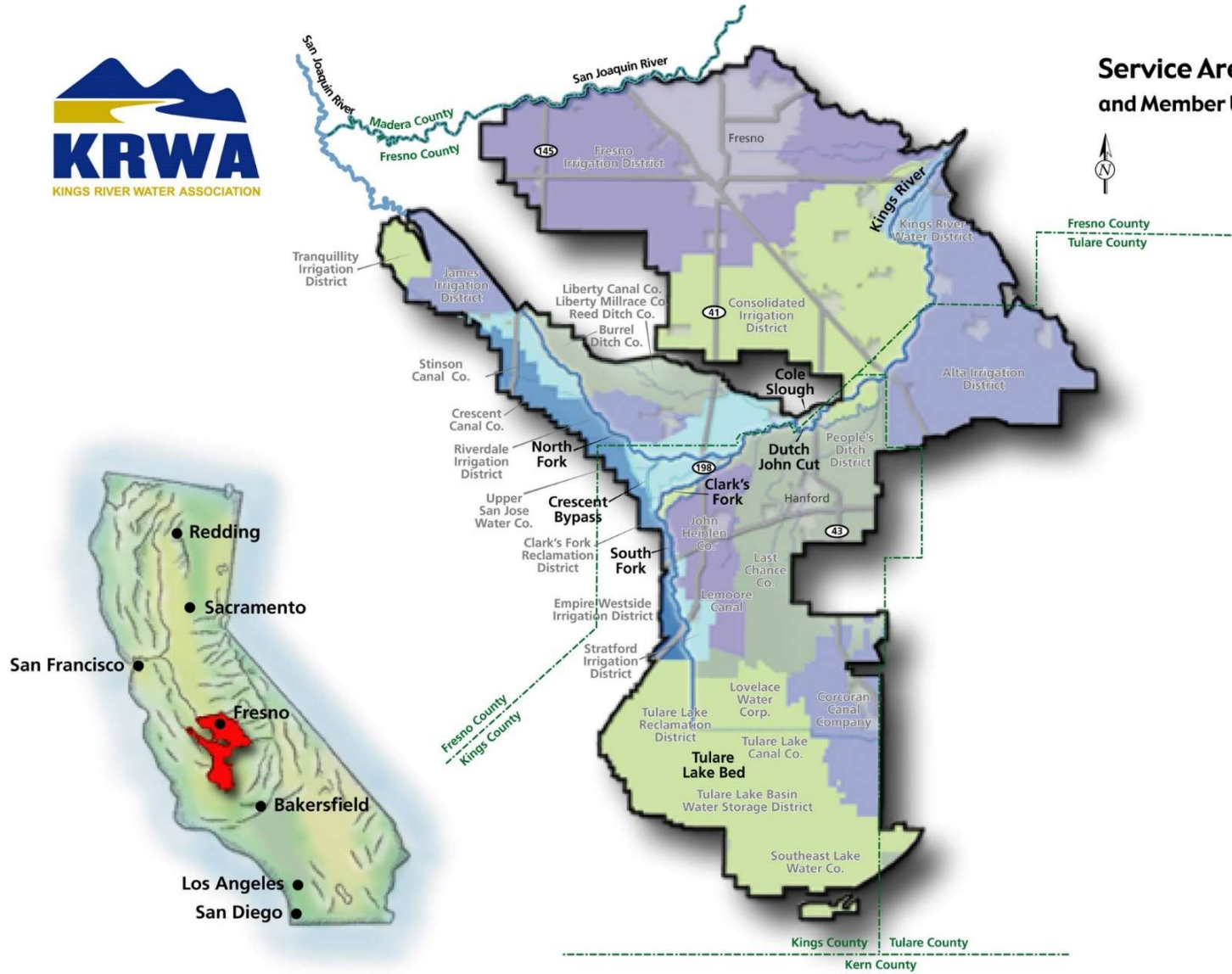
October 10, 2024

Presented by:

Steven Haugen, Watermaster
Kings River Water Association

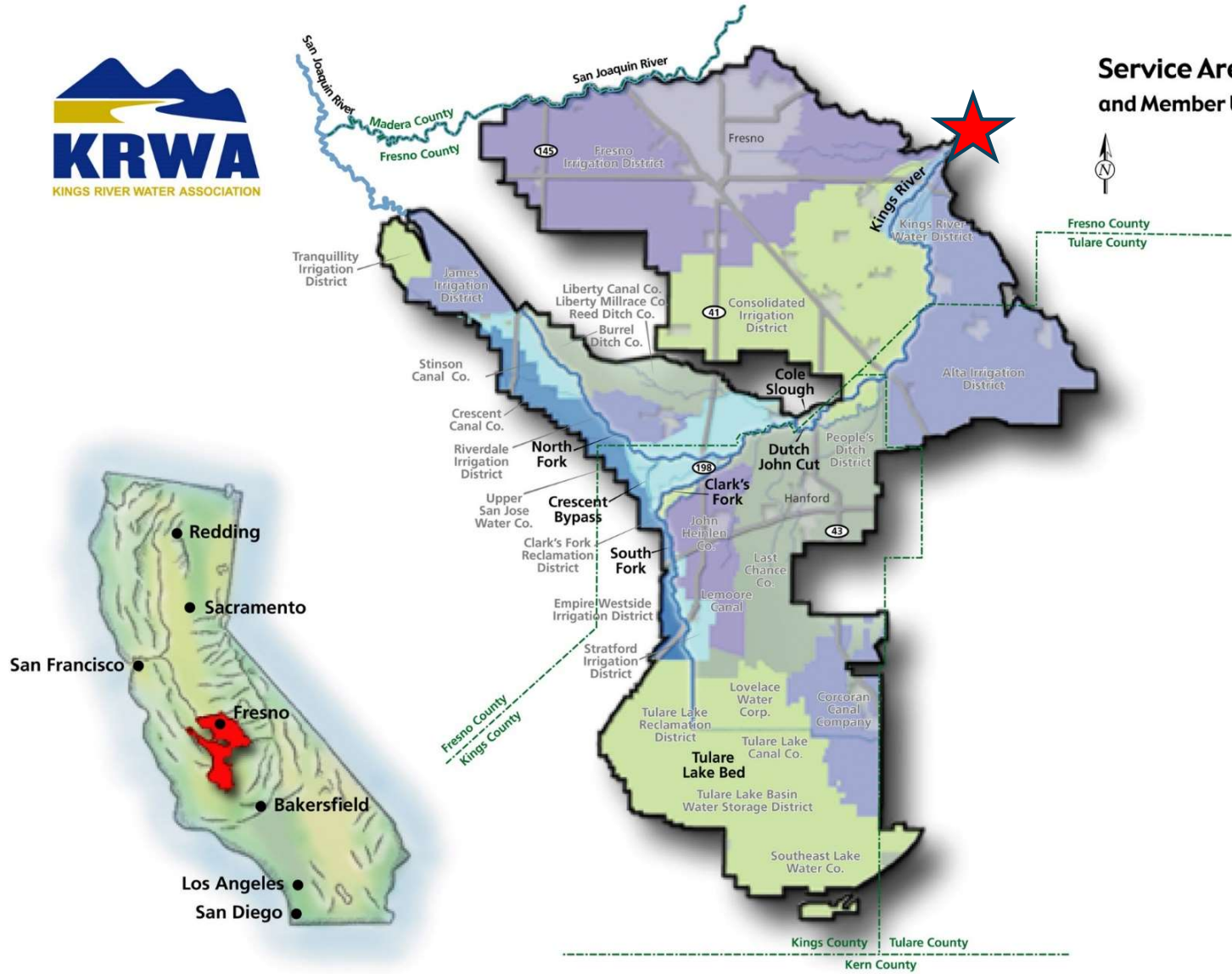


Service Area and Member Units



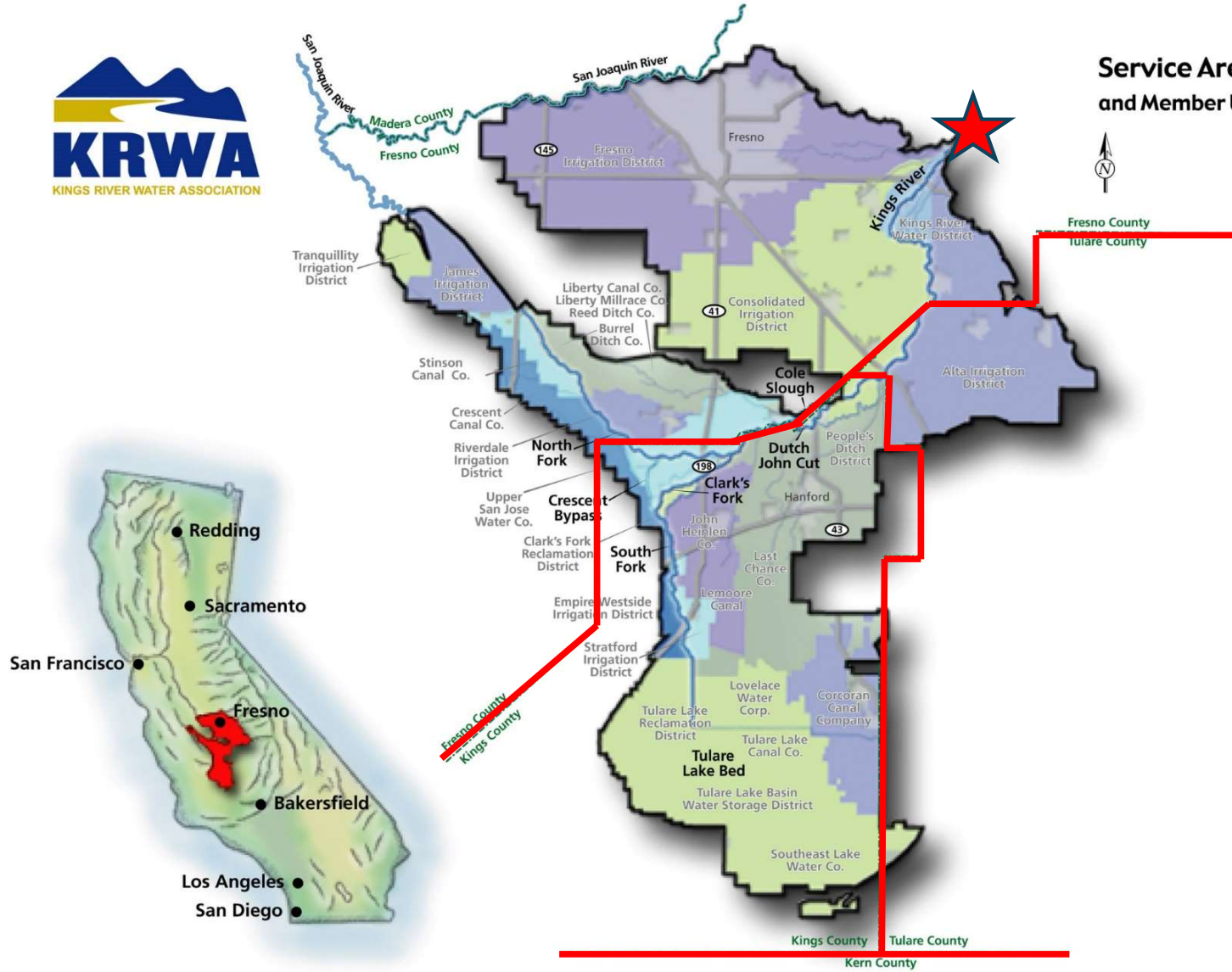


Service Area and Member Units



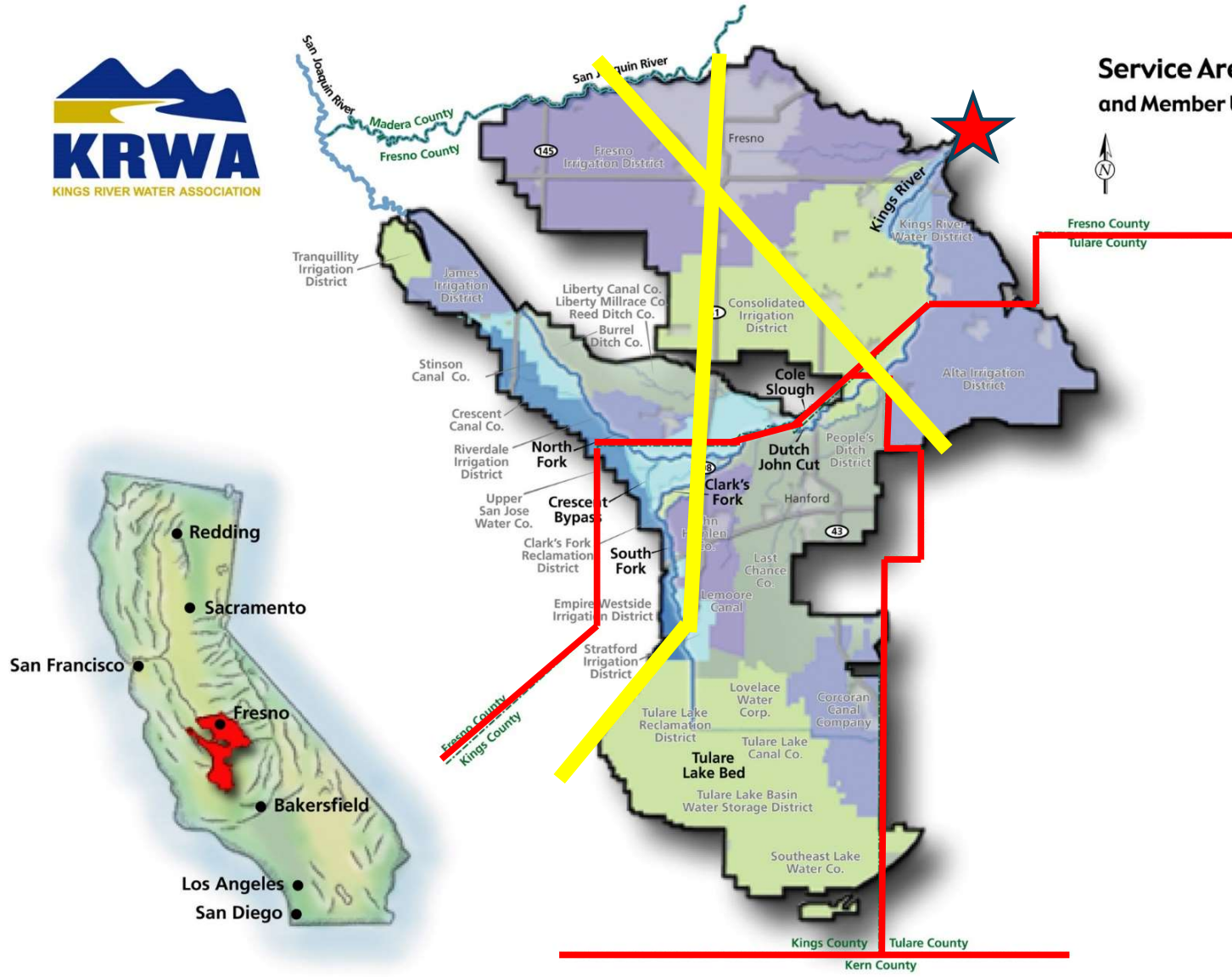


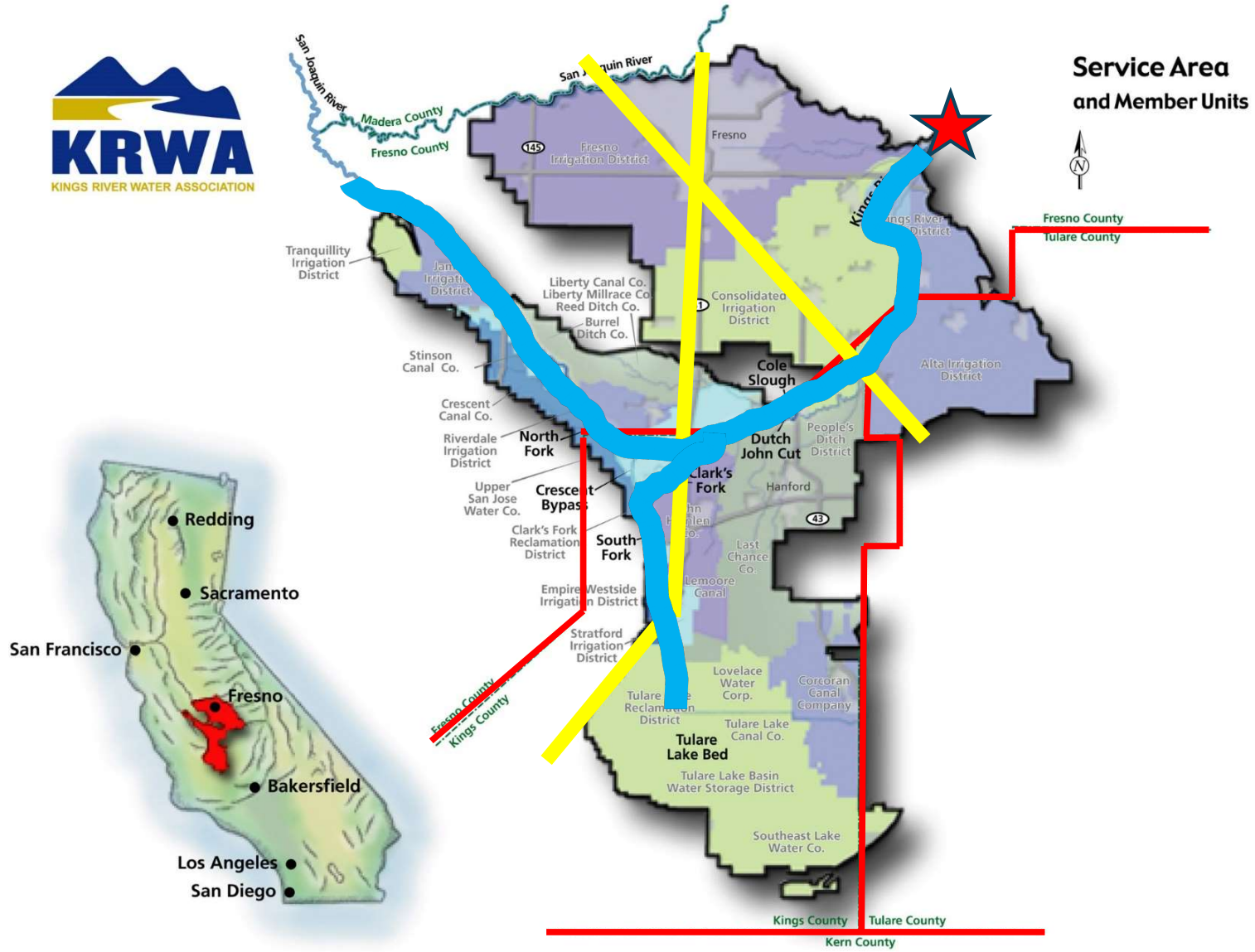
Service Area and Member Units



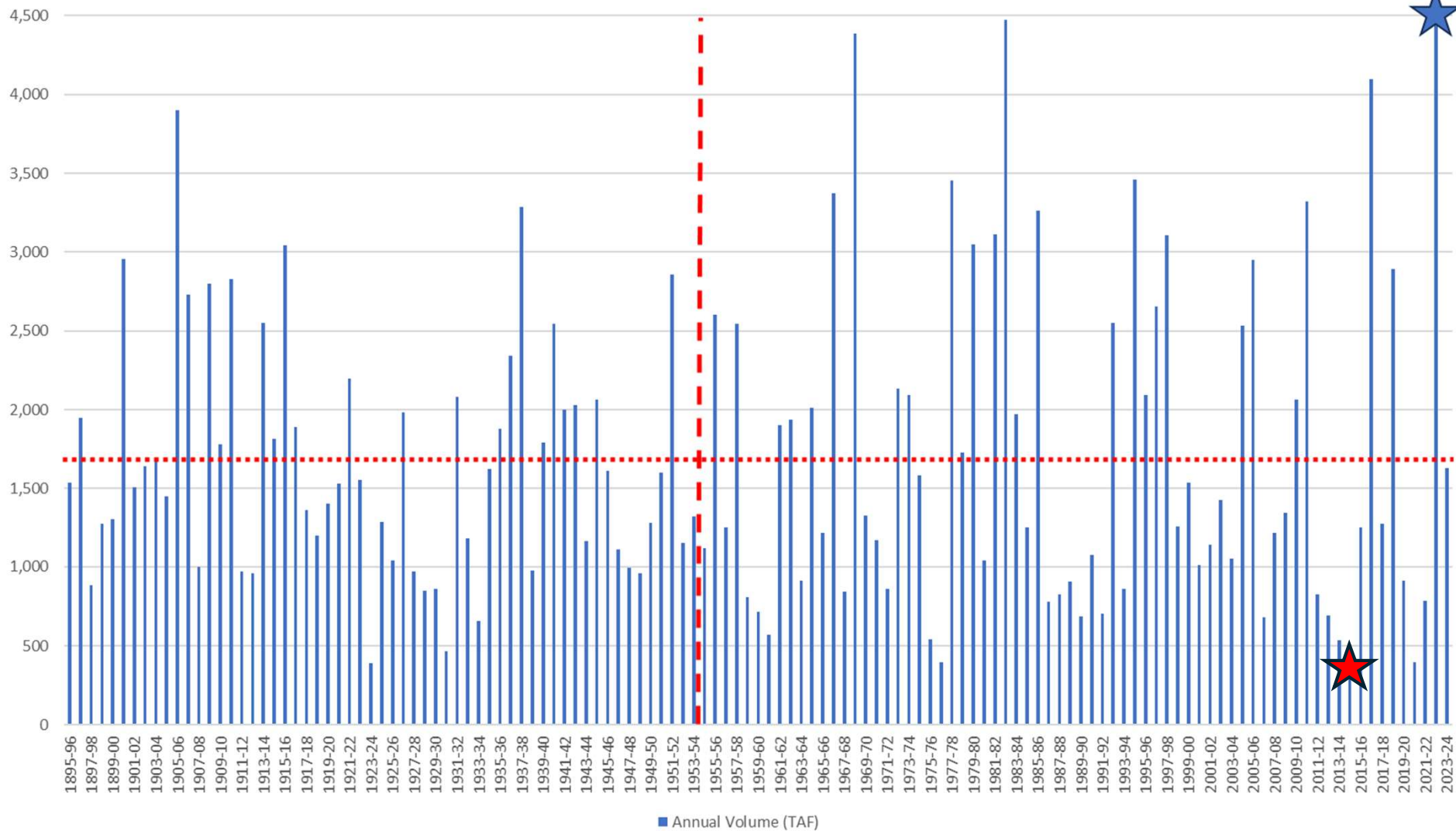


**Service Area
and Member Units**





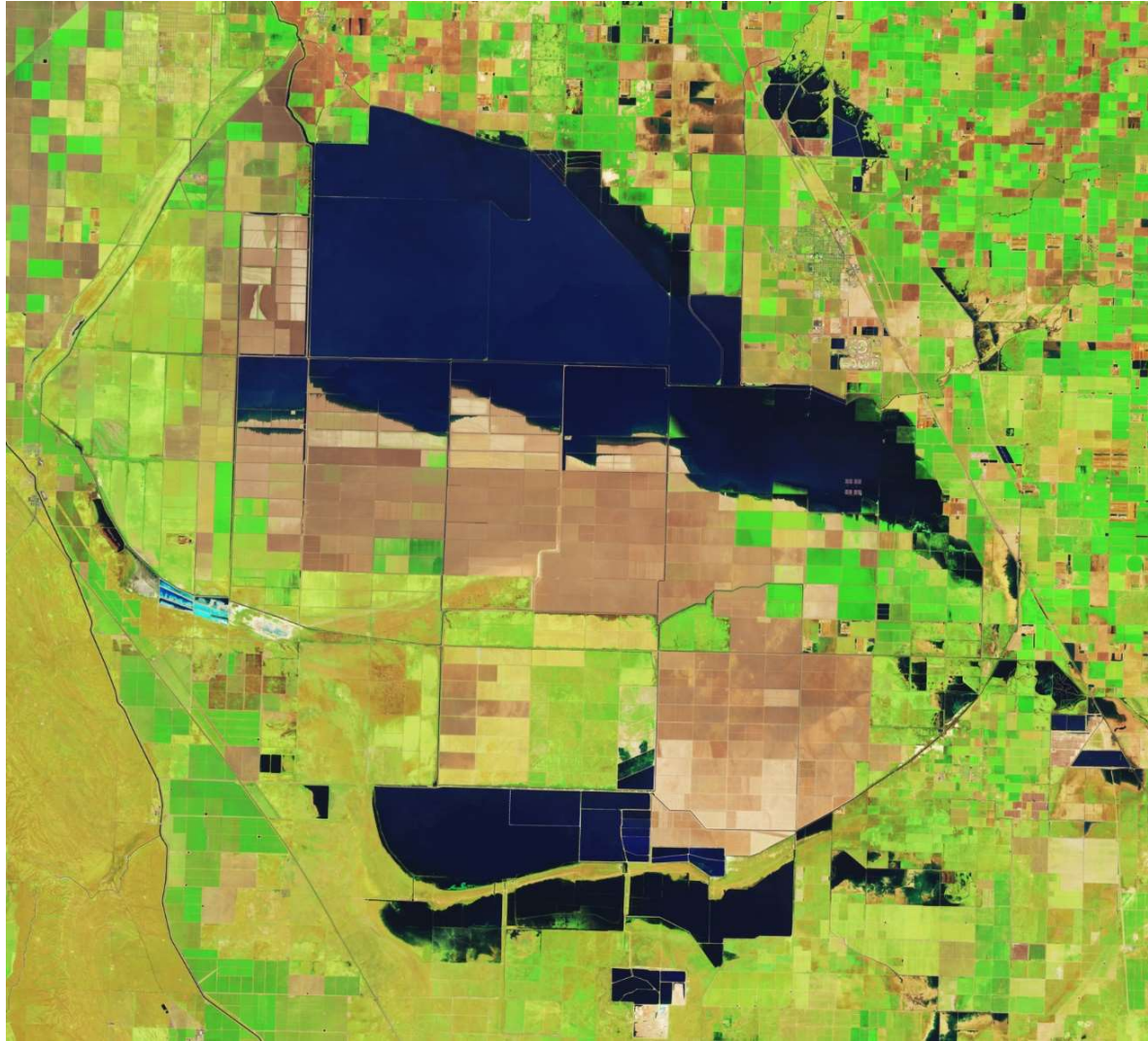
Kings River Annual Flow Volume (TAF)



History of Water Development in the Local Area

- 1860's -- Irrigation from the Kings River begins
- 1890's -- Initial development of the Schedule
- 1927 -- KRWA Established
- 1940's -- CVP & Friant Dam
- 1954 -- Pine Flat Dam & Storage
- 1960's -- State Water Project
- 1999 -- Kings River Fisheries Program
- 2014 -- SGMA
- 2024 -- Challenges to the Kings River Water Rights
- The Future???





Tulare Lakebed April 30, 2023

Looking forward -

Protection of water supply and flood control:

- Maintenance
- Construction of Recharge
- Raise Pine Flat
- Water Supply Threats
 - Regulatory
 - Competing interests



KINGS COUNTY

STATE OF THE COUNTY ADDRESS

DOUG VERBOON, CHAIRMAN

KYRIA MARTINEZ, COUNTY ADMINISTRATIVE OFFICER

OCTOBER 10, 2024



WELCOME



DOUG VERBOON, KINGS COUNTY BOARD OF SUPERVISORS, CHAIRMAN



WELCOME



KYRIA MARTINEZ, COUNTY ADMINISTRATIVE OFFICER



AGENDA

1. KINGS COUNTY HISTORY

2. BOARD OF SUPERVISORS/ADMINISTRATION

3. KINGS COUNTY STATISTICS

4. MEMBERSHIPS

5. BUDGET

6. CURRENT PROJECTS



KINGS COUNTY HISTORY



HISTORY - 58 COUNTIES

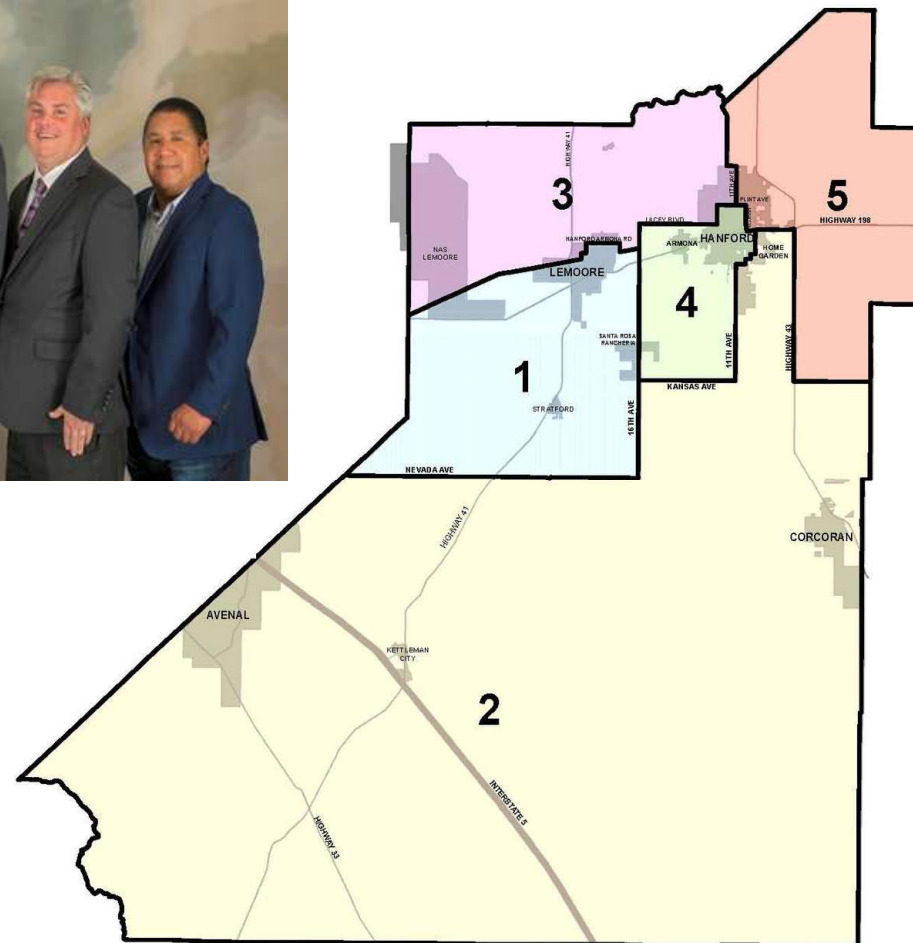




BOARD OF SUPERVISORS/ADMINISTRATION



BOARD OF SUPERVISORS



JOE NEVES

Supervisor, District 1
Population: 28,543
Square miles: 131

RICHARD VALLE

Supervisor, District 2
Population: 27,974 *
Square miles: 965

DOUG VERBOON

Supervisor, District 3
Population: 28,017
Square miles: 122

RUSTY ROBINSON

Supervisor, District 4
Population: 28,109
Square miles: 44

RICHARD FAGUNDES

Supervisor, District 5
Population: 27,681
Square miles: 130

2020 U.S. CENSUS POPULATION COUNT
*Does not include State Prison inmates



Elected Officials



Kristine Lee
Assessor/Clerk-Recorder



David Robinson
Sheriff



Sarah Hacker
District Attorney



Department Heads



Erik Urena
Finance



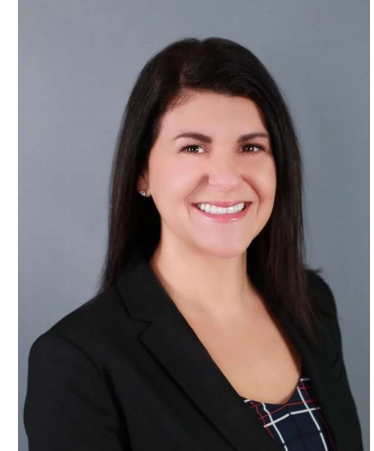
Diane Freeman
County Counsel



Jimmy Hook
Ag Commissioner



Lisa Lewis
Behavioral Health



Marie Waite
Child Support Services



Karmjot Randhawa
UC Cooperative
Extension



Lupe Villa
Registrar of Voters



Salvador Flores
Fire Chief



Rose Mary Rahn
Public Health



Carolyn Leist
Human Resources



Department Heads



Wendy Osikafo
Human Services Agency



John Devlin
Information
Technology



Julieta Martinez
Economic & Workforce
Development



Vikki Cervantes
Library



Chuck Kinney
Community
Development



Leonard Bakker
Chief Probation
Officer



Dominic Tyburski
Public Works



Scott Holwell
Public Guardian/
Veterans Services



IMPACT OF COUNTY SERVICES



Human Services Agency

Benefit Services:

- Recognized for exceeding State standards for CalFresh (above 90%) for expedited services and timeliness

Adult Services:

- Exceeding State average in 7 of 8 identified employment service outcome areas

Child Welfare Services:

- Exceeding National Standard in 5 of 7 critical outcome areas



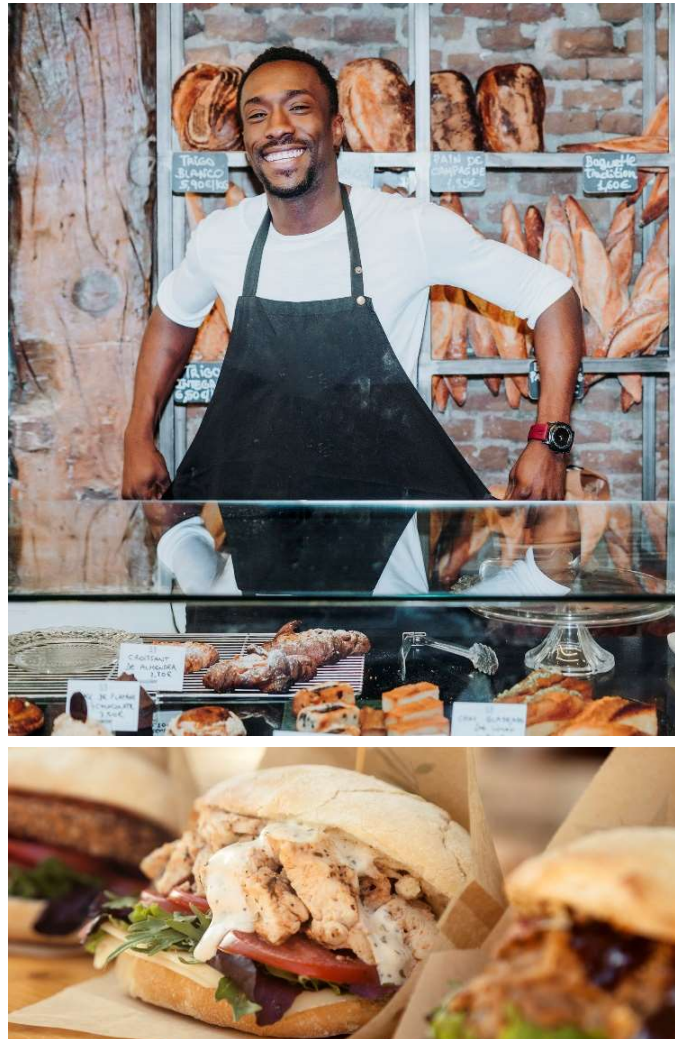


Health

1,157 restaurant
facility inspections

115 mobile food
vendor inspections

65 mobile permits
issued





Public Works

916 miles of
County Roads

108 County
bridges

1 Traffic Signal
+ 1 in design





Behavioral Health





Fire

Call Volume

2023 -
Responded to
5272 Calls -
57% Medical

2024 -
Responded to
4182 Calls -
57% Medical





KINGS COUNTY STATISTICS



KINGS COUNTY POPULATION

Kings County has experienced modest population growth. An increase in population contributes to an increased demand for services.

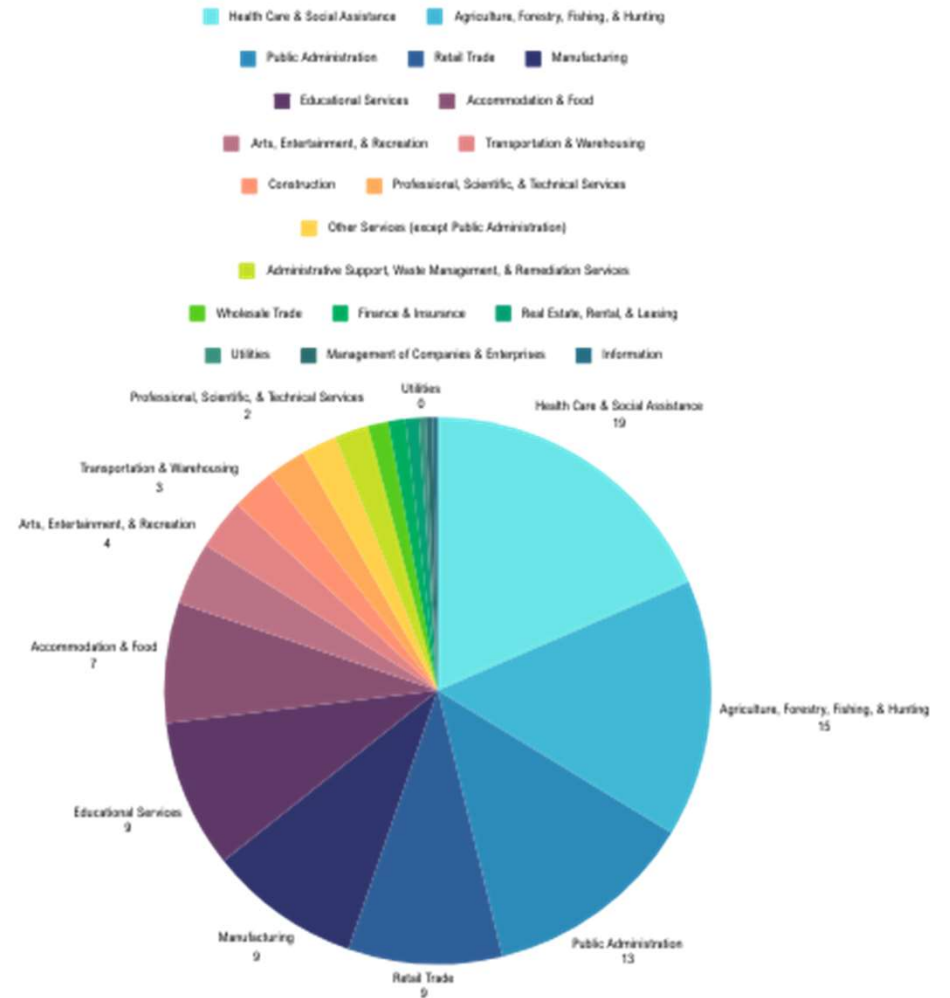
KINGS COUNTY POPULATION GROWTH 2020 – 2024

	2020	2021	2022	2023	2024	% Change '23 to '24
Total	152,486	151,157	151,654	151,629	152,627	0.7%
Avenal	13,694	12,751	13,154	13,398	13,981	4.3%
Corcoran	21,626	20,798	21,991	21,437	21,633	0.9%
Hanford	58,123	58,706	58,260	59,034	59,286	0.4%
Lemoore	27,032	27,230	26,968	26,929	26,855	-0.3%
Unincorp.	32,011	31,672	31,281	30,831	30,872	0.1%
California	39.54M	39.28M	39.11M	39.06M	39.13M	0.2%

SOURCE: *CALIFORNIA DEPARTMENT OF FINANCE*



EMPLOYMENT BY INDUSTRY KINGS COUNTY 2024



SOURCE: CA EDD, LMID, CHMURA



COST OF LIVING COMPARISON

	AVERAGE ANNUAL SALARY	COSTING OF LIVING INDEX (BASE US)	U.S. PURCHASING POWER
KINGS COUNTY	\$56,446	110.8	\$50,948
CALIFORNIA	\$86,052	141.5	\$60,793
USA	\$70,857	100.0	\$70,857

Source: Chmura, JobsEQ

*The Cost of Living Index for the national average is 100 or the base for the COL Index



TOP 10 AGRICULTURAL COMMODITIES 2023

Top 10 Commodities

Crop	2023 Rank	Dollar Value	2022 Rank	2021 Rank	1974 Rank
Milk, Total	1	\$697,947,000	1	1	2
Pistachios	2	\$290,078,000	2	2	-
Cotton, All	3	\$179,378,000	3	4	1
Cattle & Calves	4	\$176,066,000	5	5	3
Tomatoes, Processed	5	\$143,147,000	4	6	-
Almonds, Total	6	\$140,174,000	6	3	-
Corn Silage	7	\$87,632,000	7	7	-
Wheat, Silage	8	\$60,067,000	9	9	6
Vegetable Crops, Other	9	\$59,990,000	14	13	-
Plums	10	\$46,732,000	10	14	-

SOURCE: *KINGS COUNTY AGRICULTURAL COMMISSIONER 2023 CROP REPORT*



COUNTY BUDGET

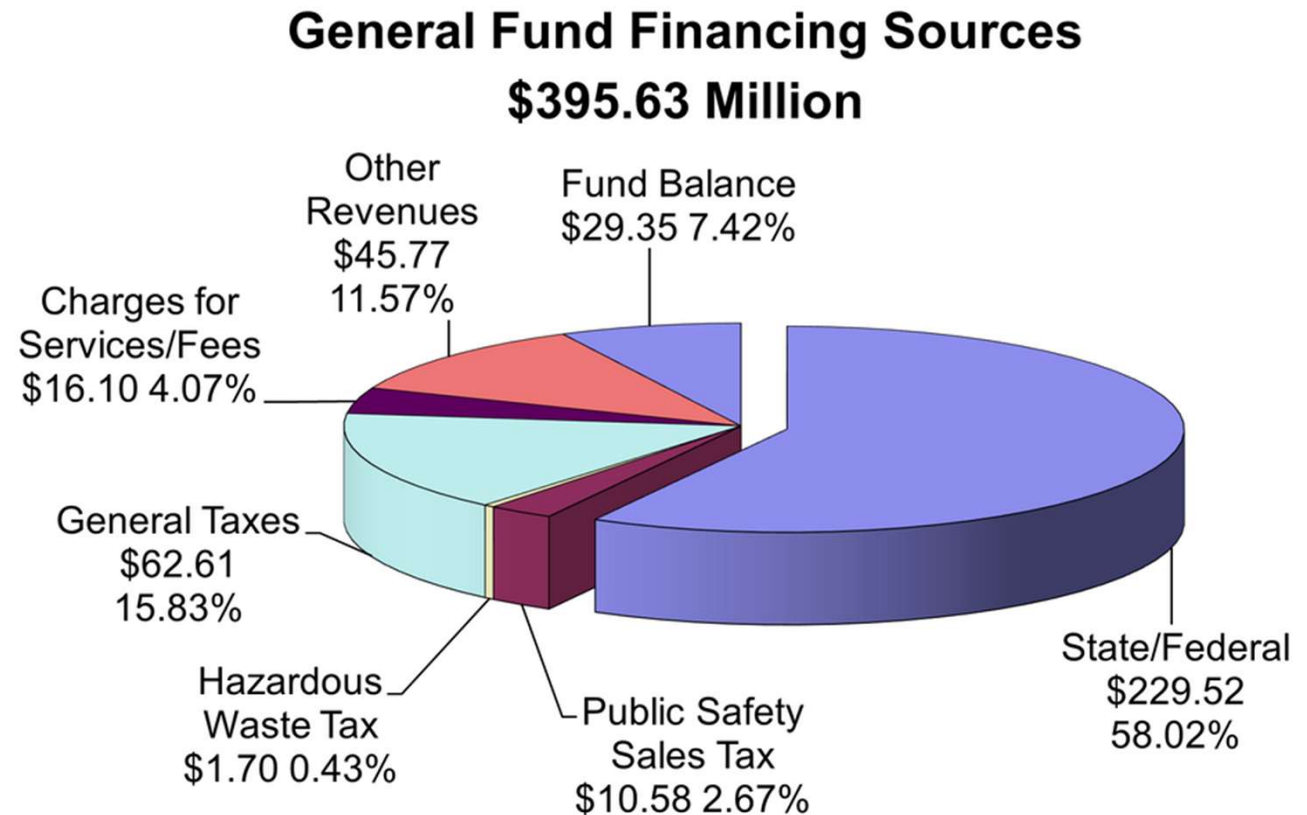
FISCAL YEAR 2024/2025



GENERAL FUND FINANCING SOURCES

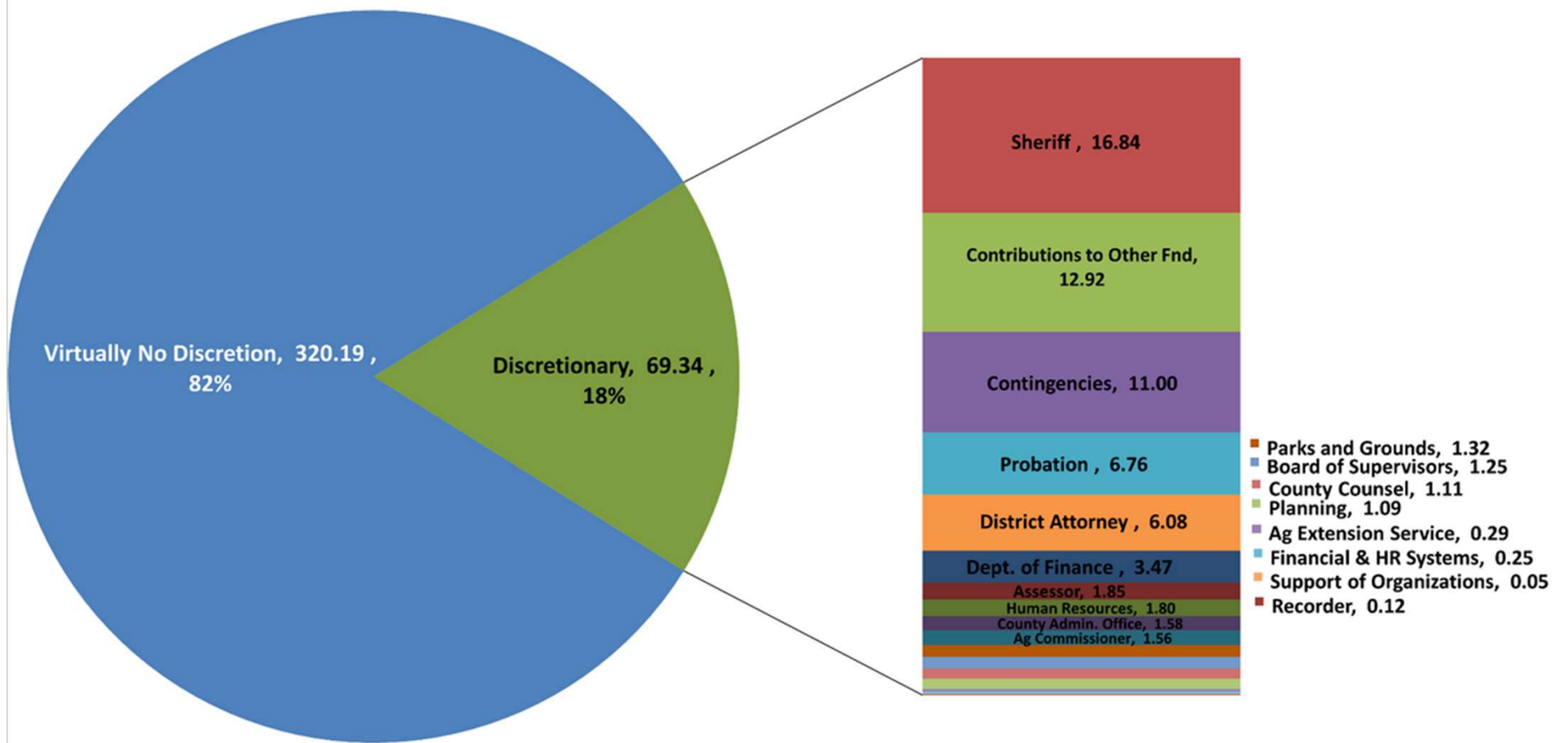
The bulk of county revenues come from the state and federal governments to operate federal and state mandated services

Property taxes and sales taxes account for the bulk of county discretionary revenues



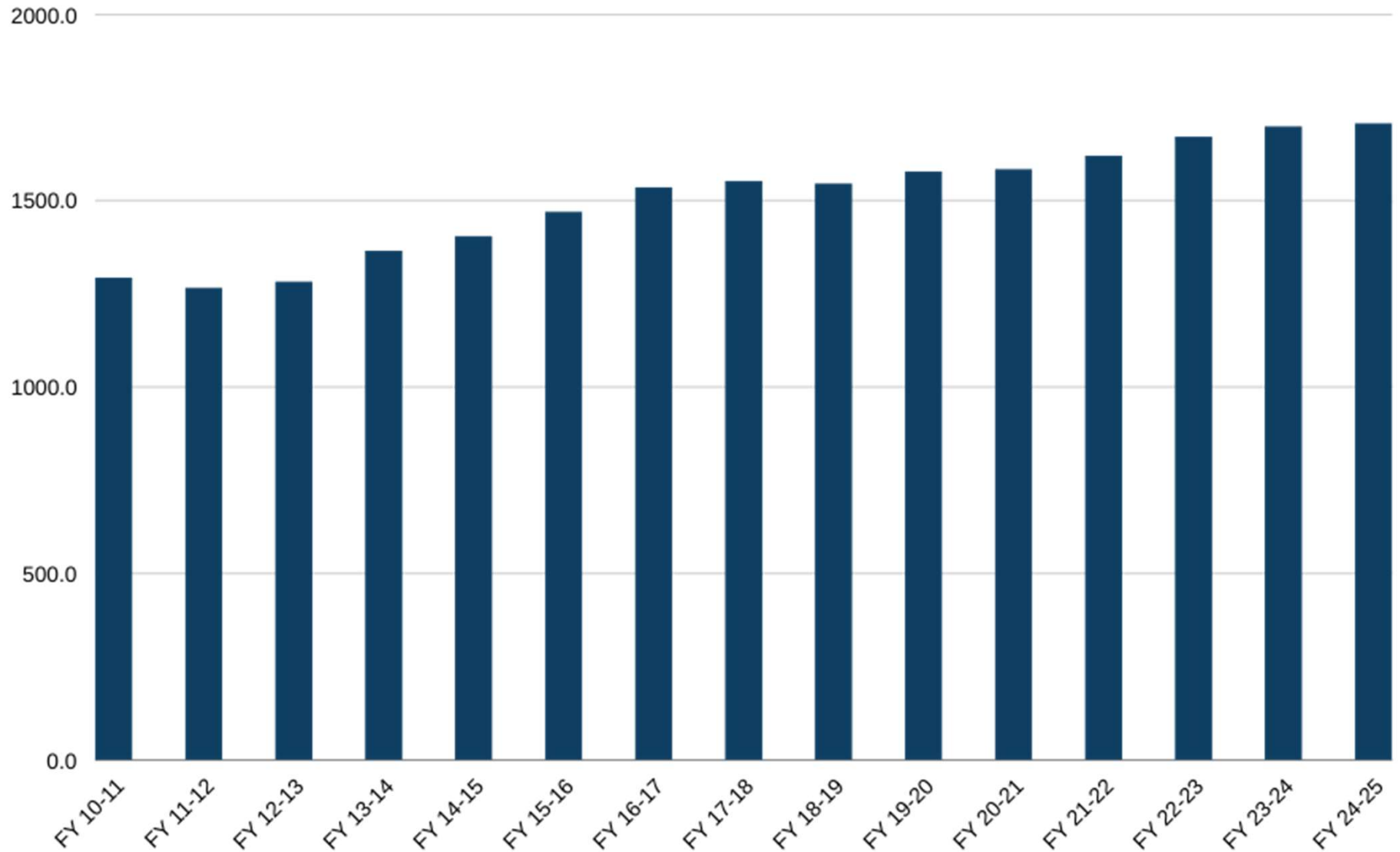


VIRTUALLY NO DISCRETION VS. DISCRETIONARY EXPENDITURES





POSITION ALLOCATION





Past Project Highlights



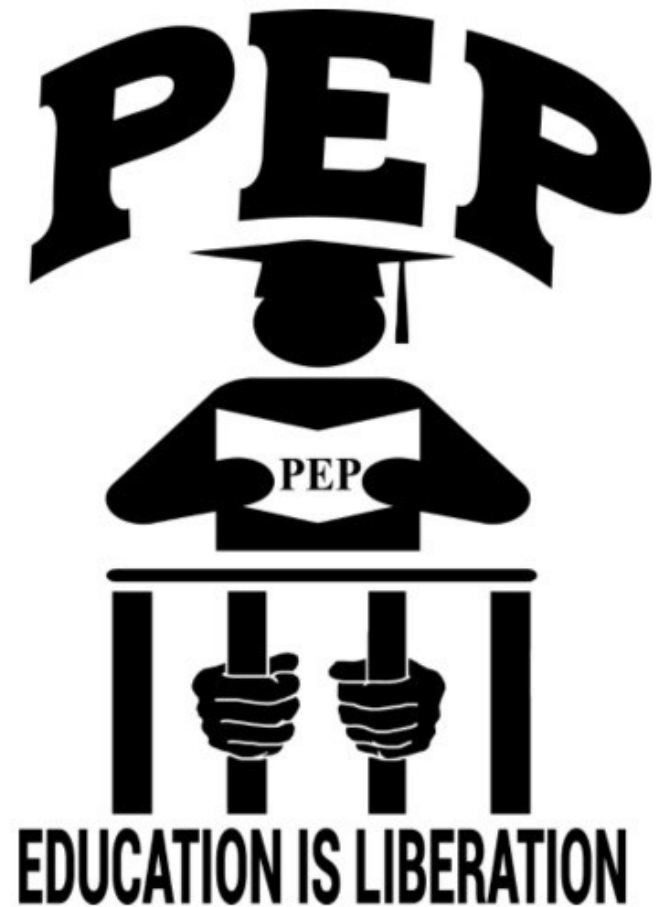
Early Access Stabilization Services Program: Sheriff's Office





Prison Education Project (PEP): Probation Department

- Rising Scholars: Post-Secondary Education
- Prison Education Program





Child Support Awareness Month & Kids Day: Child Support Services



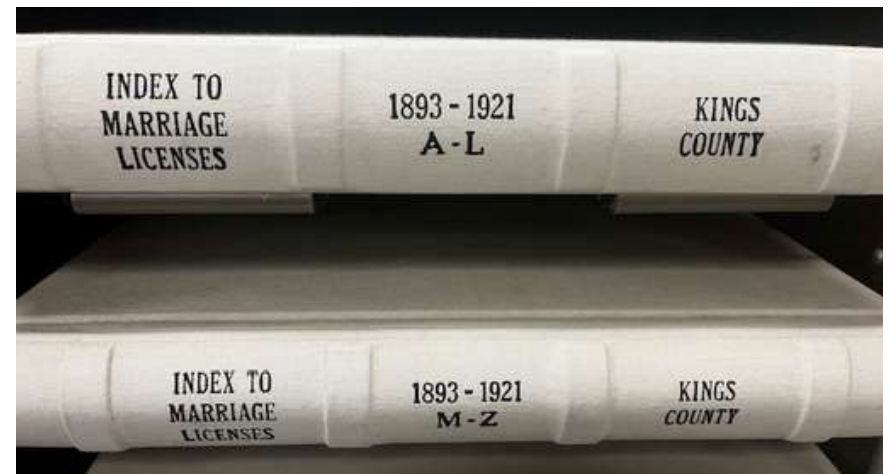


CURRENT COUNTY PROJECTS



ASSESSOR/CLERK-RECORDER

PRESERVING the Past for the Future...





LIBRARY





Court House Remodel





KINGS BUILDING





JUVENILE CENTER EXPANSION PROJECT





JUVENILE CENTER EXPANSION PROJECT





STATION 5 ARMONA





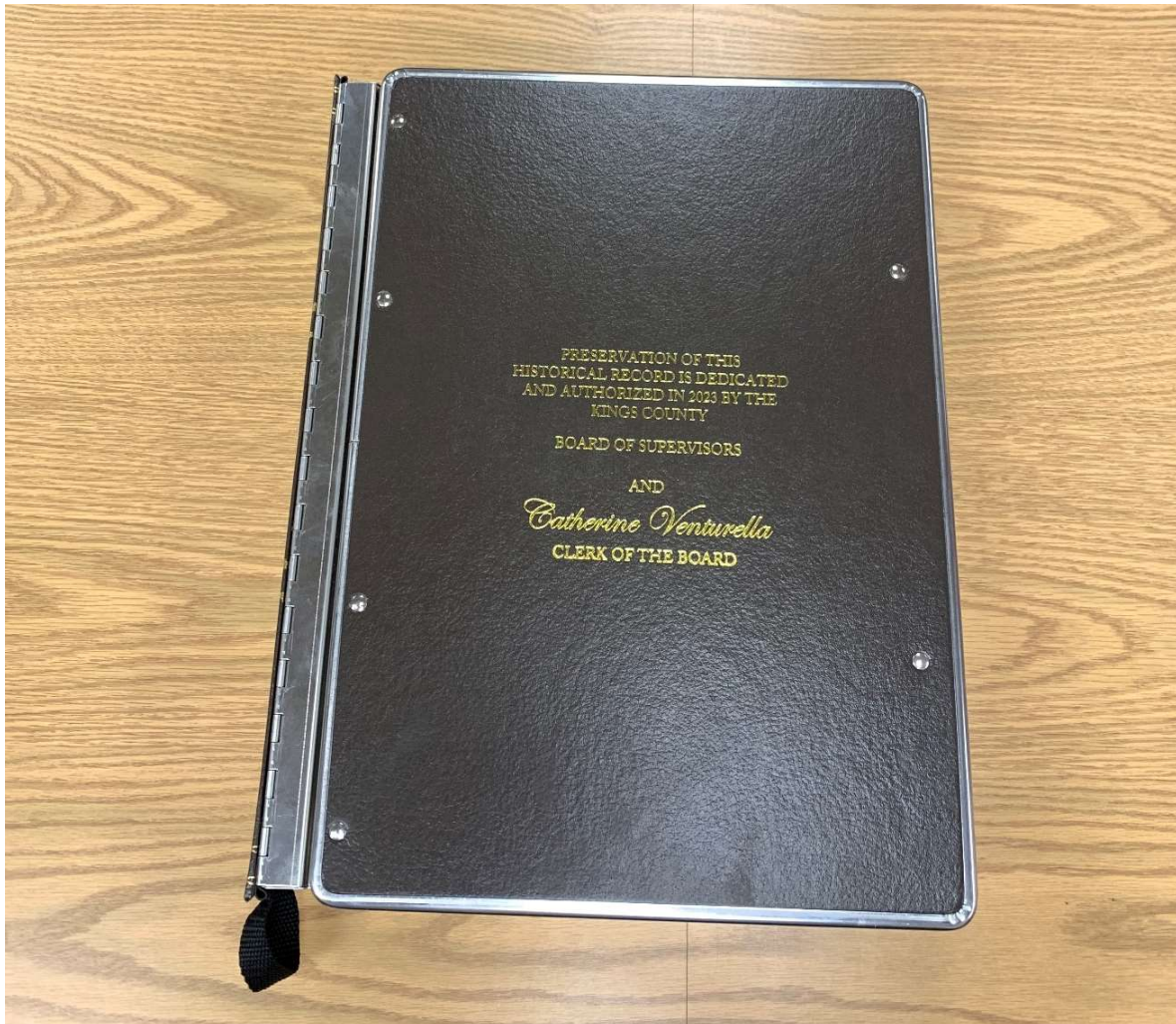
BOARD OF SUPERVISORS CHAMBERS REMODEL





BOARD RECORD PRESERVATION PROJECT

PRESERVING the Past for the Future...





WORKFORCE INITIATIVES





FINAL WORDS



SCAN ME





Thank you