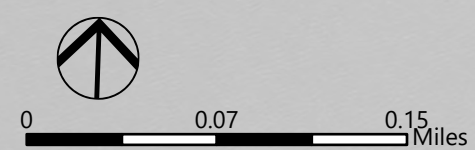


Note:  
 No utilities are affected by the project. Protect utilities in place.  
 All sign that will be replaced or relocated will remain within the County right of way.



**LEGEND**

- KEEP
- NEW
- RELOCATE
- NEW LEFT-TURN CHEVRONS
- REPLACE
- NEW RIGHT-TURN CHEVRONS
- REPLACE AND RELOCATE
- County
- RESET
- Parcels
- REMOVE



EXISTING SIGN TABLE				FINAL RECOMMENDATION		
SIGN ID	MUTCD SIGN CODE	SIGN SIZE	SIGN FACING	PANEL	POST	LOCATION
2763	W1-1-R	-	E	KEEP	REPLACE	RELOCATE 225 FEET IN ADVANCE OF CURVE
2764	W13-1	-	E	REMOVE	SHARED POST WITH 2763	REMOVE
2765	W1-6-R	48X24	E	REPLACE WITH LARGER	KEEP	KEEP
2766	OM1-1	-	E	KEEP	SHARED POST WITH 2765	KEEP
2803	OM1-1	-	N	KEEP	SHARED POST WITH 2804	KEEP
2804	W16-5PL	-	N	KEEP	KEEP	KEEP
2807	W1-1-L	-	N	KEEP	REPLACE	RELOCATE 225 FEET IN ADVANCE OF CURVE
2808	W13-1	-	N	REMOVE	SHARED POST WITH 2807	REMOVE

NEW SIGN ID	CHEVRON RANGE	SIGN CODE	SIGN SIZE	SIGN FACING	FINAL RECOMMENDATION
3012		W13-1P (15)	18X18	E	INSTALL NEW W13-1P (15) ON NEW POST 125 FT BEFORE CURVE
3030		W13-1P (15)	18X18	N	INSTALL NEW W13-1P (15) ON NEW POST 125 FT BEFORE CURVE

**SIGN PLAN**

NO.	REVISION	DATE	BY

  
**MARK THOMAS**  
 7571 North Remington Avenue Suite 102 Fresno, CA 93711  
 (559) 447-1938  
 www.markthomas.com

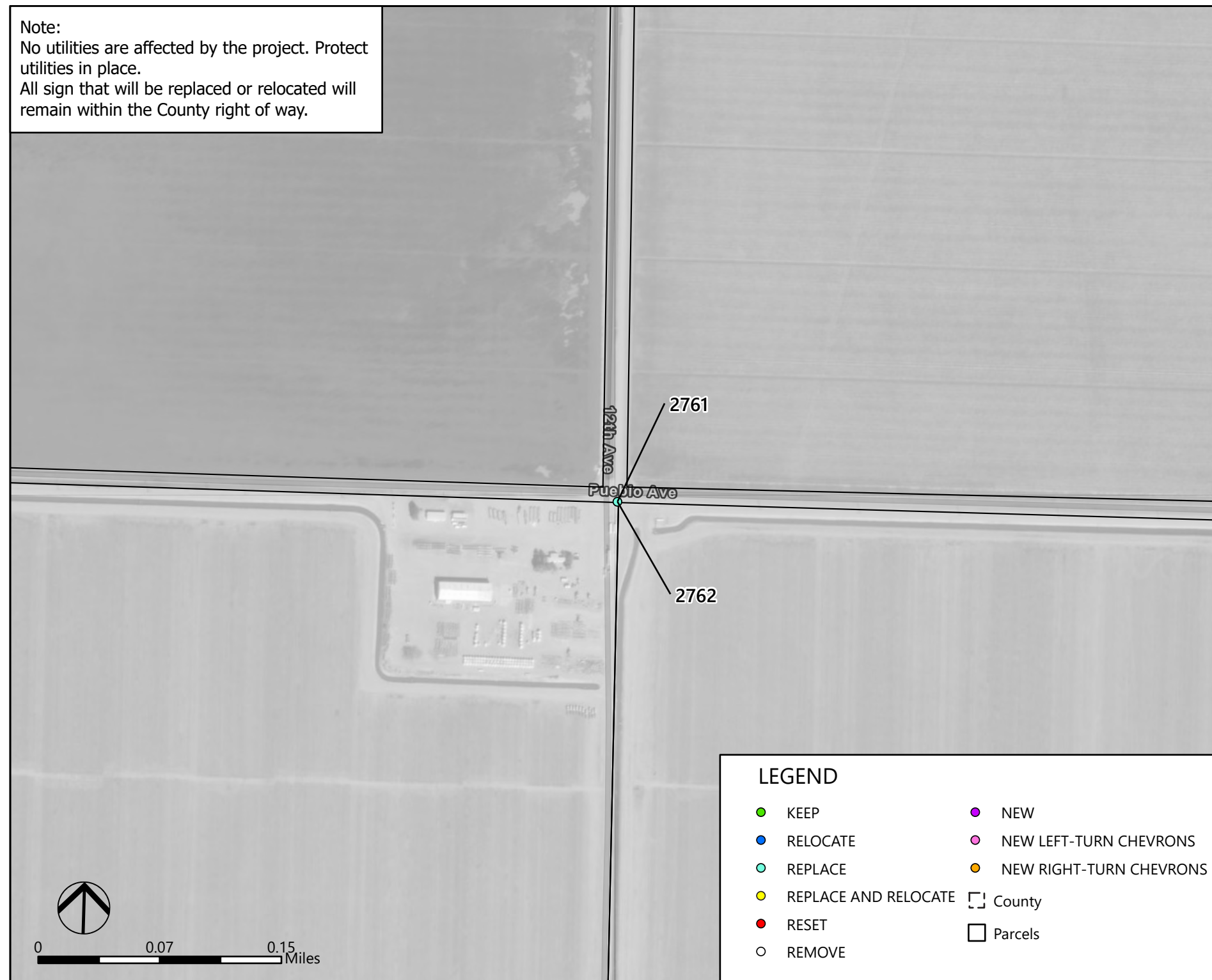
**Kings County RSSA**  
 Recommendations for Signage Improvements  
 Pueblo Avenue



MT PROJECT NO.	22-00027
SCALE:	1:4,800
DESIGNED BY:	###
DRAWN BY:	DLG
CHECKED BY:	###
Date: 6/6/2024	Page 171 of 193

Note:  
 No utilities are affected by the project. Protect utilities in place.  
 All sign that will be replaced or relocated will remain within the County right of way.

EXISTING SIGN TABLE				FINAL RECOMMENDATION		
SIGN ID	MUTCD SIGN CODE	SIGN SIZE	SIGN FACING	PANEL	POST	LOCATION
2761	OM1-1	-	N	KEEP	SHARED POST WITH 2762	KEEP
2762	W1-7	48X24	N	REPLACE WITH LARGER	KEEP	KEEP



SIGN PLAN

NO.	REVISION	DATE	BY

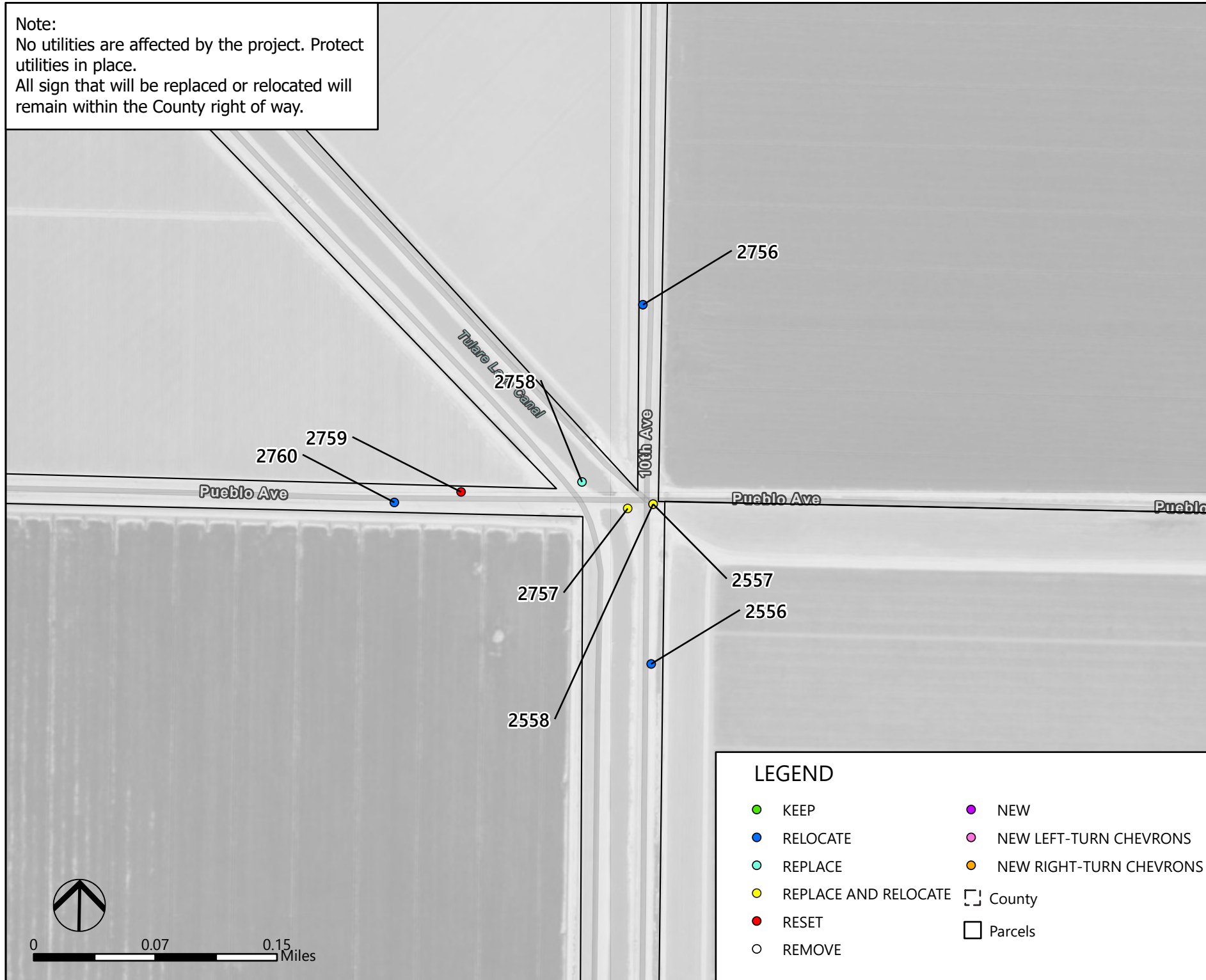
**MARK THOMAS**  
 7571 North Remington Avenue Suite 102 Fresno, CA 93711  
 (559) 447-1938  
 www.markthomas.com

**Kings County RSSA**  
 Recommendations for Signage Improvements  
 Pueblo Avenue



MT PROJECT NO.	22-00027
SCALE:	1:4,800
DESIGNED BY:	###
DRAWN BY:	DLG
CHECKED BY:	###
Date: 6/6/2024	Page 172 of 193

Note:  
 No utilities are affected by the project. Protect utilities in place.  
 All sign that will be replaced or relocated will remain within the County right of way.



EXISTING SIGN TABLE				FINAL RECOMMENDATION		
SIGN ID	MUTCD SIGN CODE	SIGN SIZE	SIGN FACING	PANEL	POST	LOCATION
2556	W2-2-L	-	S	KEEP	REPLACE	LATERAL RELOCATION
2557	W1-7	48X24	W	REPLACE WITH LARGER	REPLACE	LATERAL RELOCATION
2558	OM1-1	-	W	KEEP	SHARED POST WITH 2557	LATERAL RELOCATION
2756	W2-2-R	-	N	KEEP	REPLACE	LATERAL RELOCATION
2757	R1-1	30X30	W	REPLACE WITH LARGER	REPLACE	LATERAL RELOCATION
2758	R2-1	24X30	E	REPLACE WITH LARGER AND ADJUST SIGN HEIGHT	REPLACE	KEEP
2759	W8-5	-	E	ADJUST SIGN HEIGHT	REPLACE	KEEP
2760	W3-1	-	W	KEEP	REPLACE	RELOCATE 325 FEET FROM LIMIT LINE

SIGN PLAN



**MARK THOMAS**  
 7571 North Remington Avenue Suite 102 Fresno, CA 93711  
 (559) 447-1938  
 www.markthomas.com

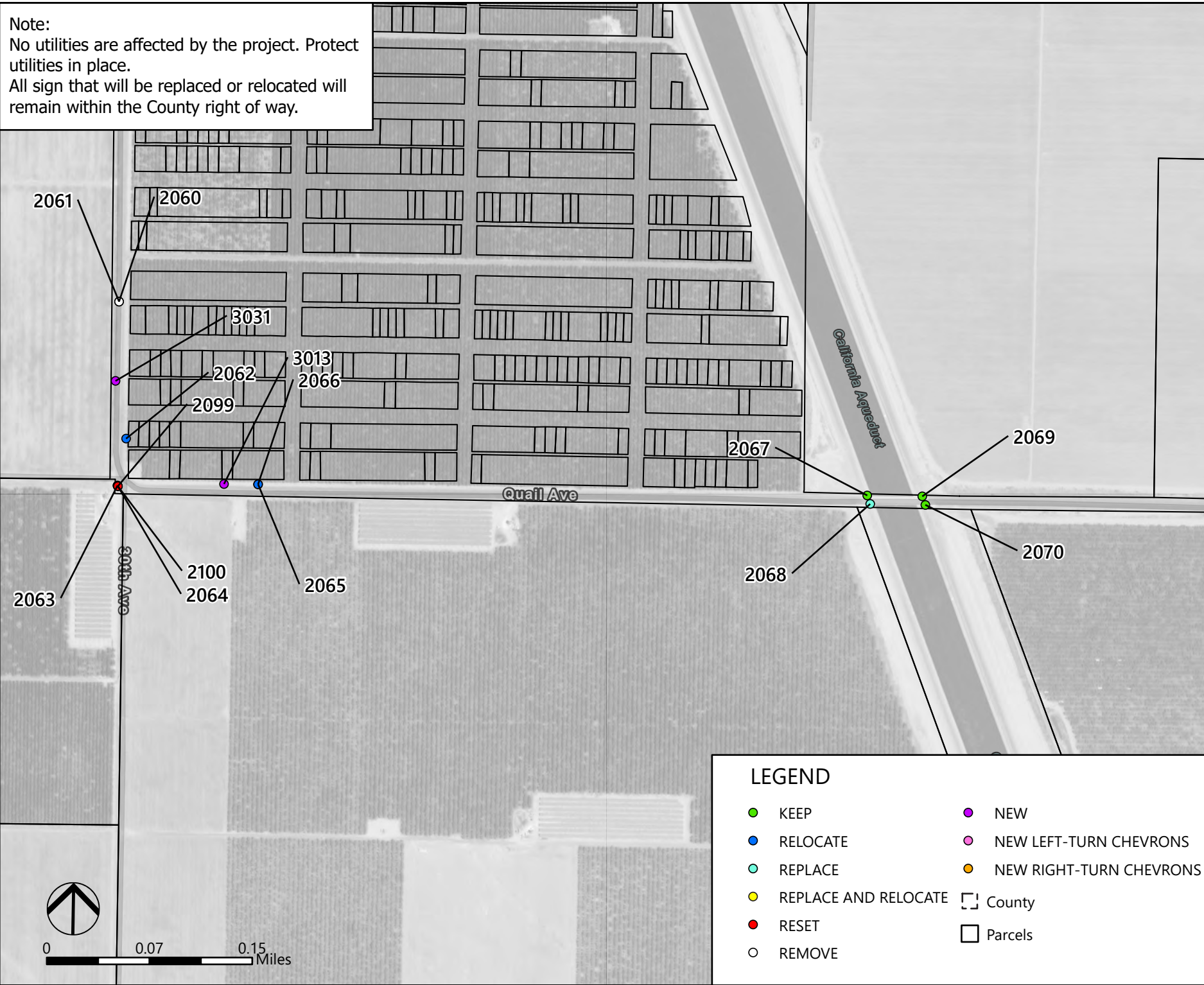
**Kings County RSSA**  
 Recommendations for Signage Improvements  
 Pueblo Avenue



MT PROJECT NO. 22-00027  
 SCALE: 1:4,800  
 DESIGNED BY: ###  
 DRAWN BY: DLG  
 CHECKED BY: ###  
 Date: 6/6/2024 Page 173 of 193

NO.	REVISION	DATE	BY

Note:  
No utilities are affected by the project. Protect utilities in place.  
All sign that will be replaced or relocated will remain within the County right of way.



EXISTING SIGN TABLE				FINAL RECOMMENDATION		
SIGN ID	MUTCD SIGN CODE	SIGN SIZE	SIGN FACING	PANEL	POST	LOCATION
2060	W1-1	-	NW	KEEP	REPLACE	RELOCATE 225 FEET IN ADVANCE OF CURVE
2061	W13-1	-	N	REMOVE	SHARED POST WITH 2060	REMOVE
2062	W8-8	-	S	KEEP	REPLACE	LATERAL RELOCATION
2063	W1-6-L	-	N	KEEP	REPLACE	LATERAL RELOCATION
2064	OM1-1	-	N	KEEP	KEEP	KEEP
2065	W13-1	-	E	KEEP	SHARED POST WITH 2066	RELOCATE 225 FEET IN ADVANCE OF CURVE
2066	W1-1-R	-	E	KEEP	REPLACE	RELOCATE 225 FEET IN ADVANCE OF CURVE
2067	OM-3-L	-	W	KEEP	KEEP	KEEP
2068	OM-3-R	12X36	E	REPLACE IN KIND	KEEP	KEEP
2069	OM-3-R	-	W	KEEP	KEEP	KEEP
2070	OM-3-L	-	E	KEEP	KEEP	KEEP
2099	W1-6-R	-	E	ADJUST SIGN HEIGHT	REPLACE	KEEP
2100	OM1-1	-	E	KEEP	SHARED POST WITH 2099	KEEP

NEW SIGN ID	CHEVRON RANGE	SIGN CODE	SIGN SIZE	SIGN FACING	FINAL RECOMMENDATION
3013		W13-1P (15)	18X18	E	INSTALL NEW W13-1P (15) ON NEW POST 275 FT BEFORE CURVE
3031		W13-1P (15)	18X18	N	INSTALL NEW W13-1P (15) ON NEW POST 275 FT BEFORE CURVE

SIGN PLAN



7571 North Remington Avenue Suite 102 Fresno, CA 93711  
(559) 447-1938  
www.markthomas.com

Kings County RSSA  
Recommendations for Signage Improvements  
Quail Avenue



MT PROJECT NO. 22-00027  
SCALE: 1:5,700  
DESIGNED BY: ###  
DRAWN BY: DLG  
CHECKED BY: ###  
Date: 6/6/2024 Page 174 of 193

NO.	REVISION	DATE	BY

Note:  
 No utilities are affected by the project. Protect utilities in place.  
 All sign that will be replaced or relocated will remain within the County right of way.



EXISTING SIGN TABLE				FINAL RECOMMENDATION		
SIGN ID	MUTCD SIGN CODE	SIGN SIZE	SIGN FACING	PANEL	POST	LOCATION
2071	OM-3-L	-	E	KEEP	KEEP	KEEP
2072	OM-3-R	-	E	KEEP	KEEP	KEEP
2097	OM-3-L	-	W	KEEP	KEEP	KEEP
2101	OM-3-R	-	W	KEEP	KEEP	KEEP

SIGN PLAN

NO.	REVISION	DATE	BY

**MARK THOMAS**  
 7571 North Remington Avenue Suite 102 Fresno, CA 93711  
 (559) 447-1938  
 www.markthomas.com

**Kings County RSSA**  
 Recommendations for Signage Improvements  
 Quail Avenue



MT PROJECT NO.	22-00027
SCALE:	1:5,700
DESIGNED BY:	###
DRAWN BY:	DLG
CHECKED BY:	###
Date: 6/6/2024	Page 175 of 193

Note:  
 No utilities are affected by the project. Protect utilities in place.  
 All sign that will be replaced or relocated will remain within the County right of way.



**LEGEND**

- KEEP
- NEW
- RELOCATE
- NEW LEFT-TURN CHEVRONS
- REPLACE
- NEW RIGHT-TURN CHEVRONS
- REPLACE AND RELOCATE
- County
- RESET
- Parcels
- REMOVE

EXISTING SIGN TABLE				FINAL RECOMMENDATION		
SIGN ID	MUTCD SIGN CODE	SIGN SIZE	SIGN FACING	PANEL	POST	LOCATION
2071	OM-3-L	-	E	KEEP	KEEP	KEEP
2072	OM-3-R	-	E	KEEP	KEEP	KEEP
2074	R2-1	-	E	KEEP	REPLACE	LATERAL RELOCATION
2097	OM-3-L	-	W	KEEP	KEEP	KEEP
2101	OM-3-R	-	W	KEEP	KEEP	KEEP

**SIGN PLAN**

NO.	REVISION	DATE	BY

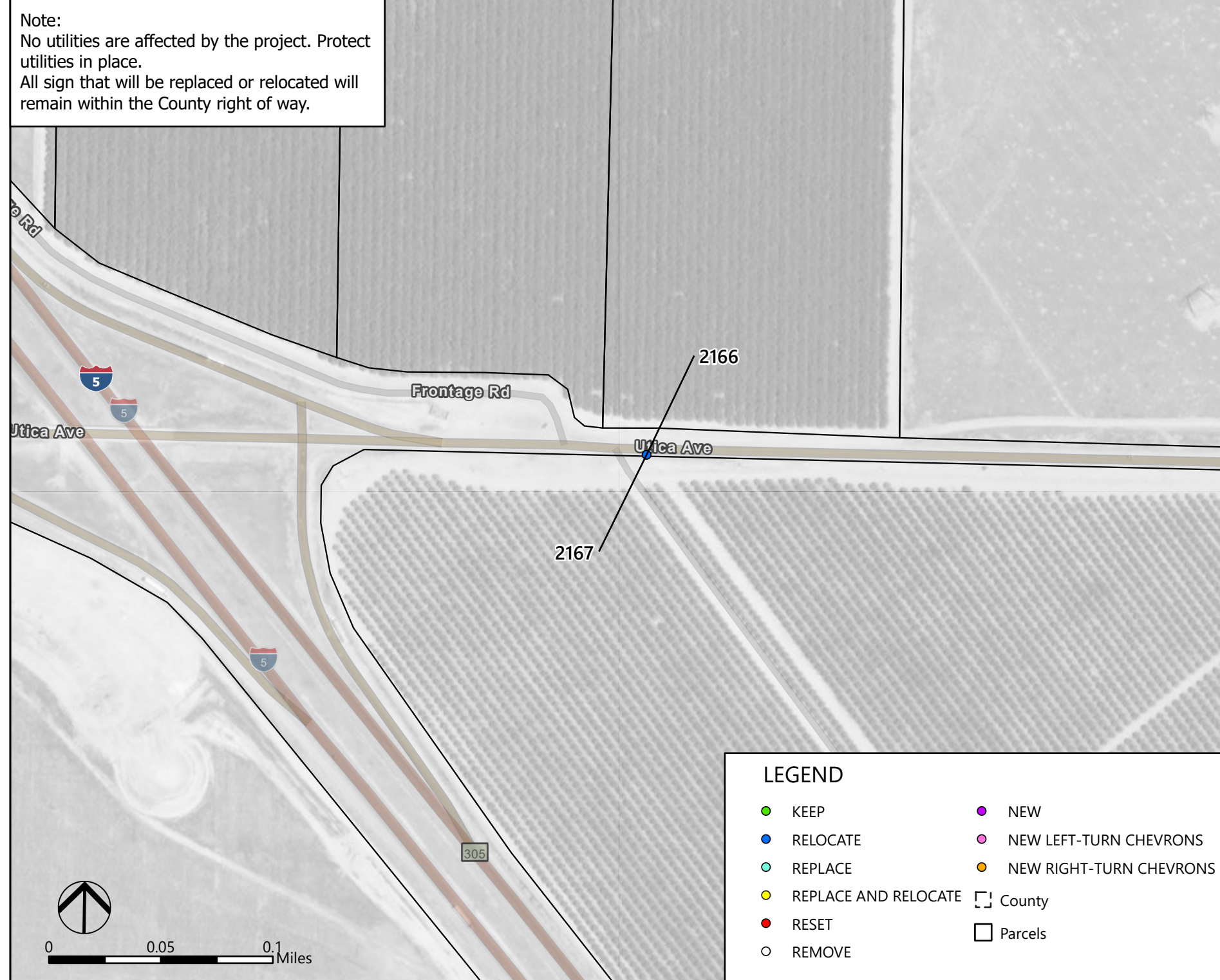
  
**MARK THOMAS**  
 7571 North Remington Avenue Suite 102 Fresno, CA 93711  
 (559) 447-1938  
 www.markthomas.com

**Kings County RSSA**  
 Recommendations for Signage Improvements  
 Quail Avenue



MT PROJECT NO.	22-00027
SCALE:	1:5,700
DESIGNED BY:	###
DRAWN BY:	DLG
CHECKED BY:	###
Date: 6/6/2024	Page 176 of 193

Note:  
 No utilities are affected by the project. Protect utilities in place.  
 All sign that will be replaced or relocated will remain within the County right of way.



EXISTING SIGN TABLE				FINAL RECOMMENDATION		
SIGN ID	MUTCD SIGN CODE	SIGN SIZE	SIGN FACING	PANEL	POST	LOCATION
2166	R48(CA)	-	W	KEEP	SHARED POST WITH 2167	LATERAL RELOCATION
2167	R2-1	-	W	KEEP	REPLACE	LATERAL RELOCATION

SIGN PLAN

NO.	REVISION	DATE	BY

**MARK THOMAS**  
 7571 North Remington Avenue Suite 102 Fresno, CA 93711  
 (559) 447-1938  
 www.markthomas.com

**Kings County RSSA**  
 Recommendations for Signage Improvements  
 Utica Avenue



MT PROJECT NO.	22-00027
SCALE:	1:3,500
DESIGNED BY:	###
DRAWN BY:	DLG
CHECKED BY:	###
Date: 6/6/2024	Page 177 of 193

Note:  
 No utilities are affected by the project. Protect utilities in place.  
 All sign that will be replaced or relocated will remain within the County right of way.



EXISTING SIGN TABLE				FINAL RECOMMENDATION		
SIGN ID	MUTCD SIGN CODE	SIGN SIZE	SIGN FACING	PANEL	POST	LOCATION
2168	W8-8	-	W	KEEP	REPLACE	LATERAL RELOCATION

**SIGN PLAN**

NO.	REVISION	DATE	BY

**MARK THOMAS**  
 7571 North Remington Avenue Suite 102 Fresno, CA 93711  
 (559) 447-1938  
 www.markthomas.com

**Kings County RSSA**  
 Recommendations for Signage Improvements  
 Utica Avenue

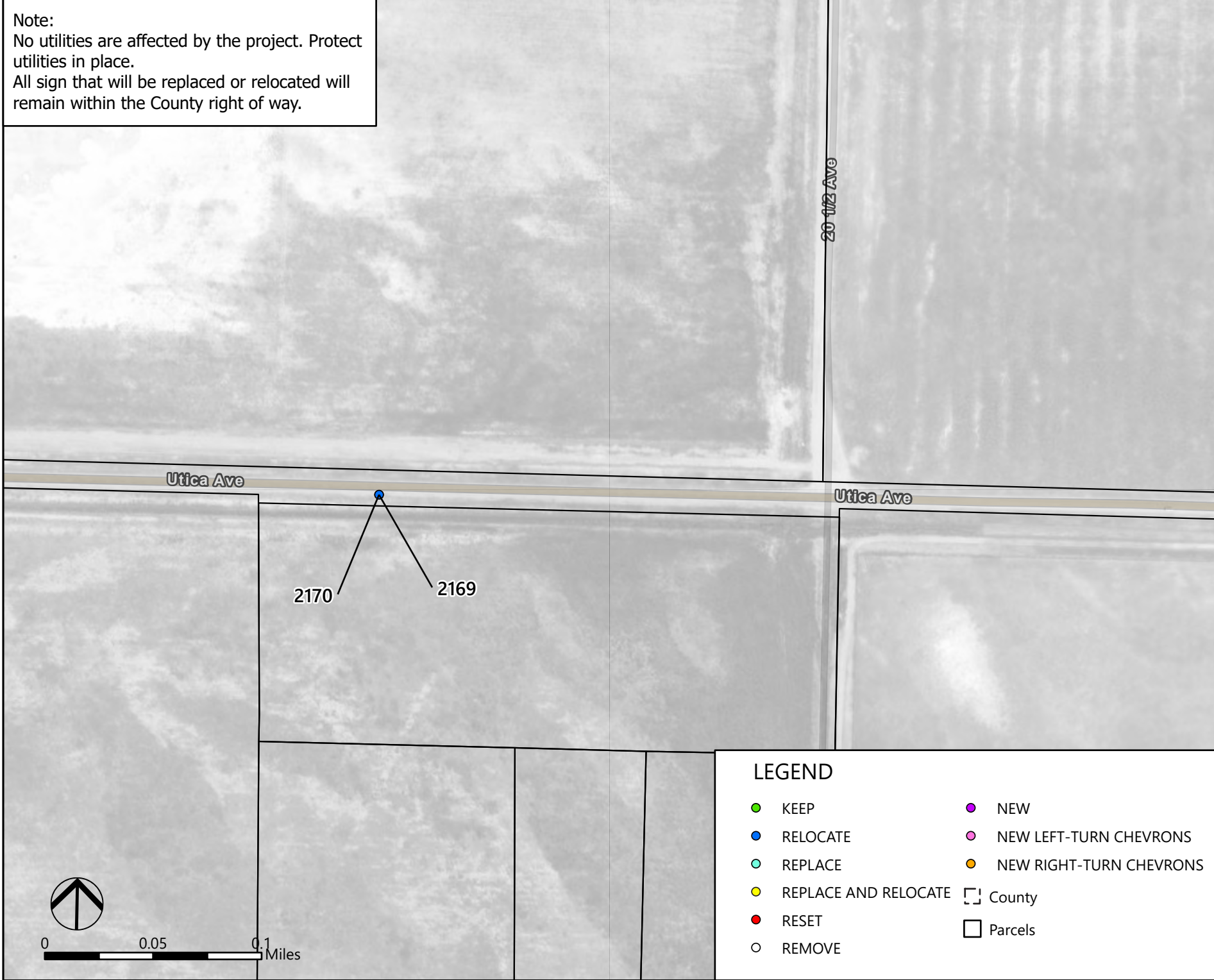


MT PROJECT NO.	22-00027
SCALE:	1:3,600
DESIGNED BY:	###
DRAWN BY:	DLG
CHECKED BY:	###
Date: 6/6/2024	Page 178 of 193

Path: J:\Kings Co-22-00027-RSSA\GIS\Kings County RSSA\Kings County RSSA.aprx



Note:  
 No utilities are affected by the project. Protect utilities in place.  
 All sign that will be replaced or relocated will remain within the County right of way.



EXISTING SIGN TABLE				FINAL RECOMMENDATION		
SIGN ID	MUTCD SIGN CODE	SIGN SIZE	SIGN FACING	PANEL	POST	LOCATION
2169	W7-3AP	-	W	KEEP	SHARED POST WITH 2169	LATERAL RELOCATION
2170	W8-5	-	W	KEEP	REPLACE	LATERAL RELOCATION

SIGN PLAN

NO.	REVISION	DATE	BY

**MARK THOMAS**  
 7571 North Remington Avenue Suite 102 Fresno, CA 93711  
 (559) 447-1938  
 www.markthomas.com

**Kings County RSSA**  
 Recommendations for Signage Improvements  
 Utica Avenue

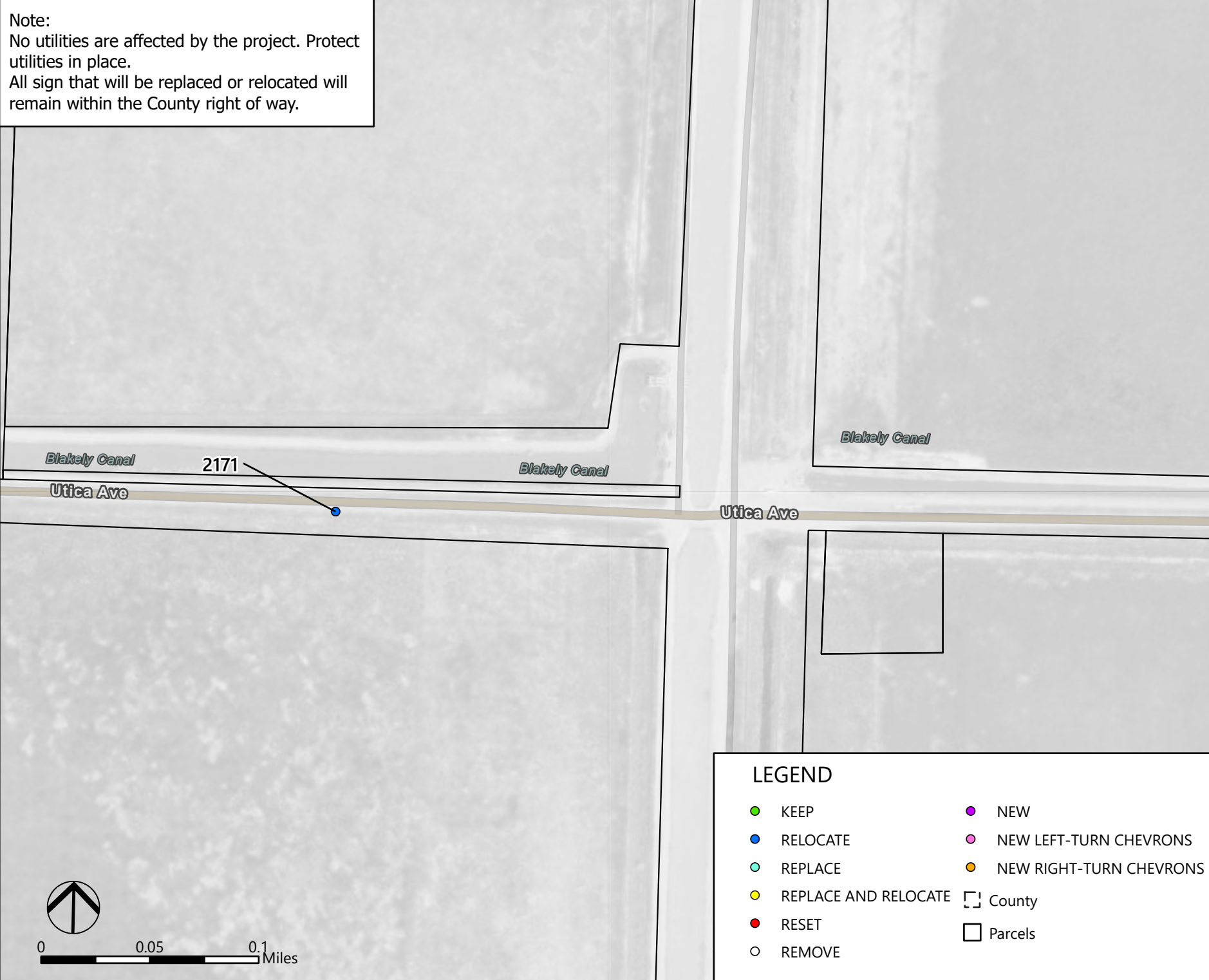


MT PROJECT NO.	22-00027
SCALE:	1:3,600
DESIGNED BY:	###
DRAWN BY:	DLG
CHECKED BY:	###
Date: 6/6/2024	Page 179 of 193

Path: J:\Kings Co-22-00027-RSSA\GV\GIS\Kings County RSSA\Kings County RSSA.aprx

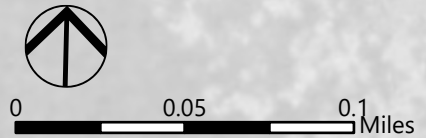
Note:  
 No utilities are affected by the project. Protect utilities in place.  
 All sign that will be replaced or relocated will remain within the County right of way.

EXISTING SIGN TABLE				FINAL RECOMMENDATION		
SIGN ID	MUTCD SIGN CODE	SIGN SIZE	SIGN FACING	PANEL	POST	LOCATION
2171	W8-5	-	NW	KEEP	REPLACE	LATERAL RELOCATION



**LEGEND**

- KEEP
- NEW
- RELOCATE
- NEW LEFT-TURN CHEVRONS
- REPLACE
- NEW RIGHT-TURN CHEVRONS
- REPLACE AND RELOCATE
- County
- RESET
- Parcels
- REMOVE



**SIGN PLAN**

NO.	REVISION	DATE	BY

  
**MARK THOMAS**  
 7571 North Remington Avenue Suite 102 Fresno, CA 93711  
 (559) 447-1938  
 www.markthomas.com

**Kings County RSSA**  
 Recommendations for Signage Improvements  
 Utica Avenue



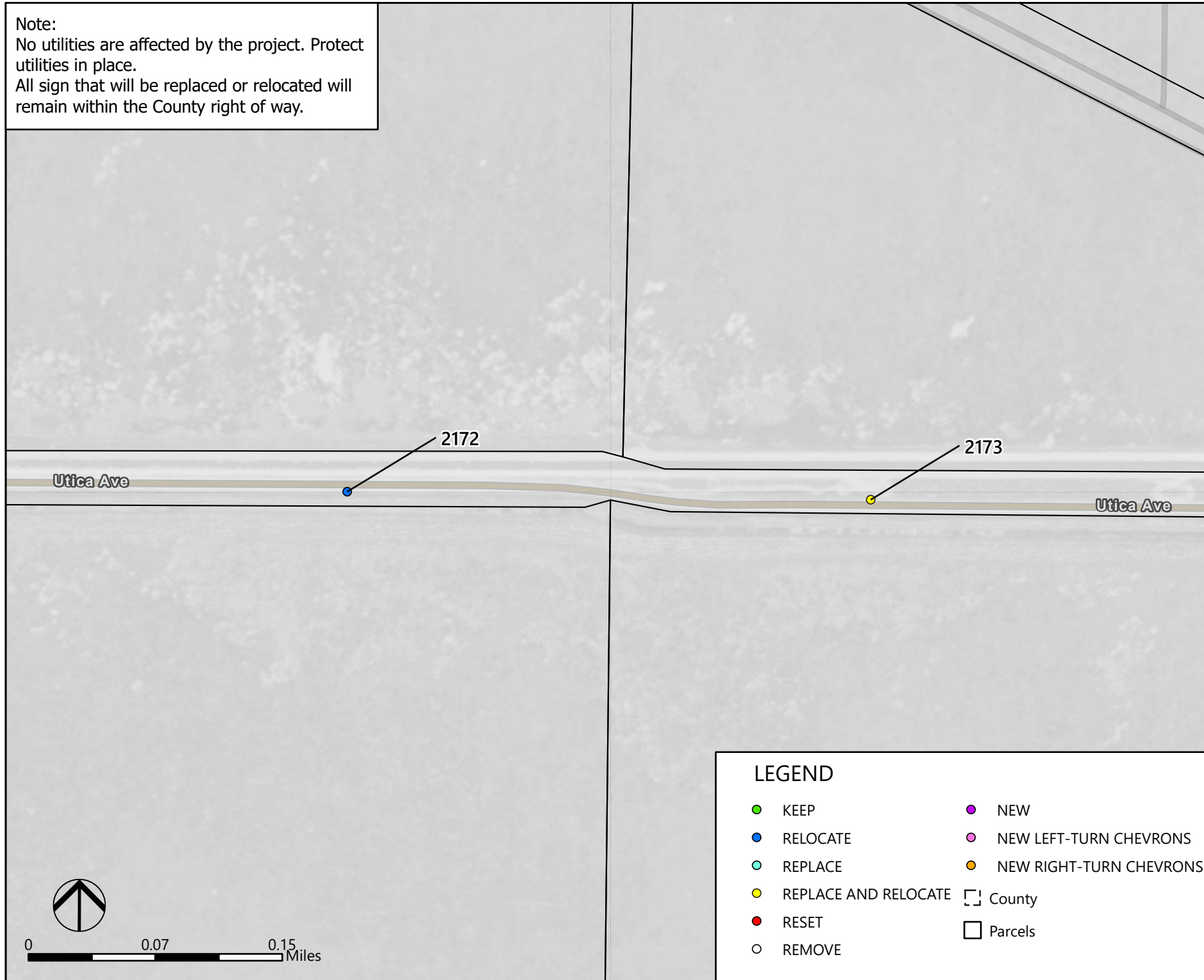
MT PROJECT NO.	22-00027
SCALE:	1:3,600
DESIGNED BY:	###
DRAWN BY:	DLG
CHECKED BY:	###
Date: 6/6/2024	Page 180 of 193

Note:  
 No utilities are affected by the project. Protect utilities in place.  
 All sign that will be replaced or relocated will remain within the County right of way.

**EXISTING SIGN TABLE**

**FINAL RECOMMENDATION**

SIGN ID	MUTCD SIGN CODE	SIGN SIZE	SIGN FACING	PANEL	POST	LOCATION
2172	W1-4-R	-	W	KEEP	REPLACE	LATERAL RELOCATION
2173	W1-4-R	30X30	E	REPLACE IN KIND	REPLACE	LATERAL RELOCATION



**SIGN PLAN**

NO.	REVISION	DATE	BY



7571 North Remington Avenue Suite 102 Fresno, CA 93711  
 (559) 447-1938  
 www.markthomas.com

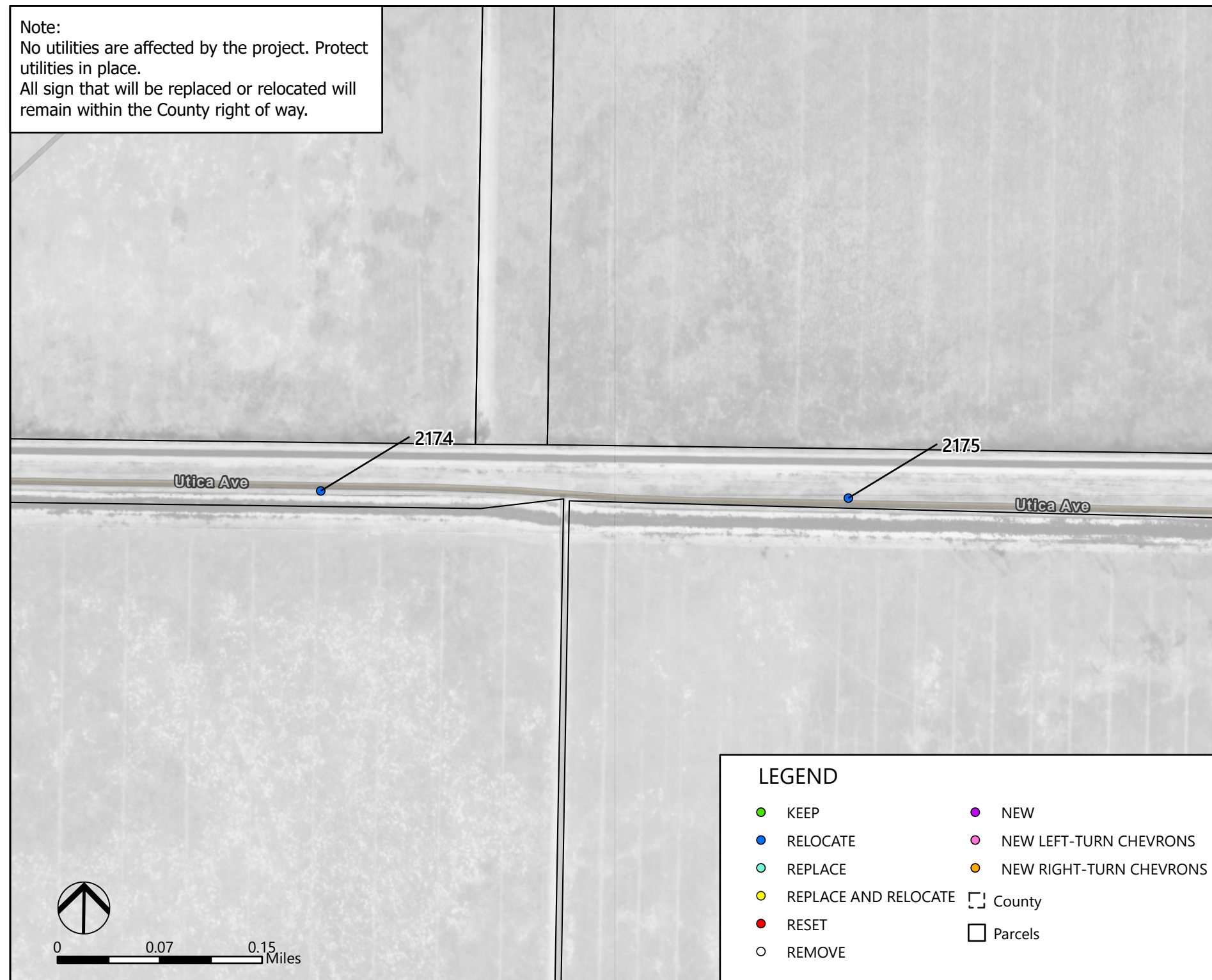
**Kings County RSSA**  
 Recommendations for Signage Improvements  
 Utica Avenue



MT PROJECT NO.	22-00027
SCALE:	1:4,600
DESIGNED BY:	###
DRAWN BY:	DLG
CHECKED BY:	###
Date: 6/6/2024	Page 181 of 193

Note:  
 No utilities are affected by the project. Protect utilities in place.  
 All sign that will be replaced or relocated will remain within the County right of way.

EXISTING SIGN TABLE				FINAL RECOMMENDATION		
SIGN ID	MUTCD SIGN CODE	SIGN SIZE	SIGN FACING	PANEL	POST	LOCATION
2174	W1-4-R	-	W	KEEP	REPLACE	LATERAL RELOCATION
2175	W1-4-R	-	E	KEEP	REPLACE	LATERAL RELOCATION



**SIGN PLAN**

NO.	REVISION	DATE	BY

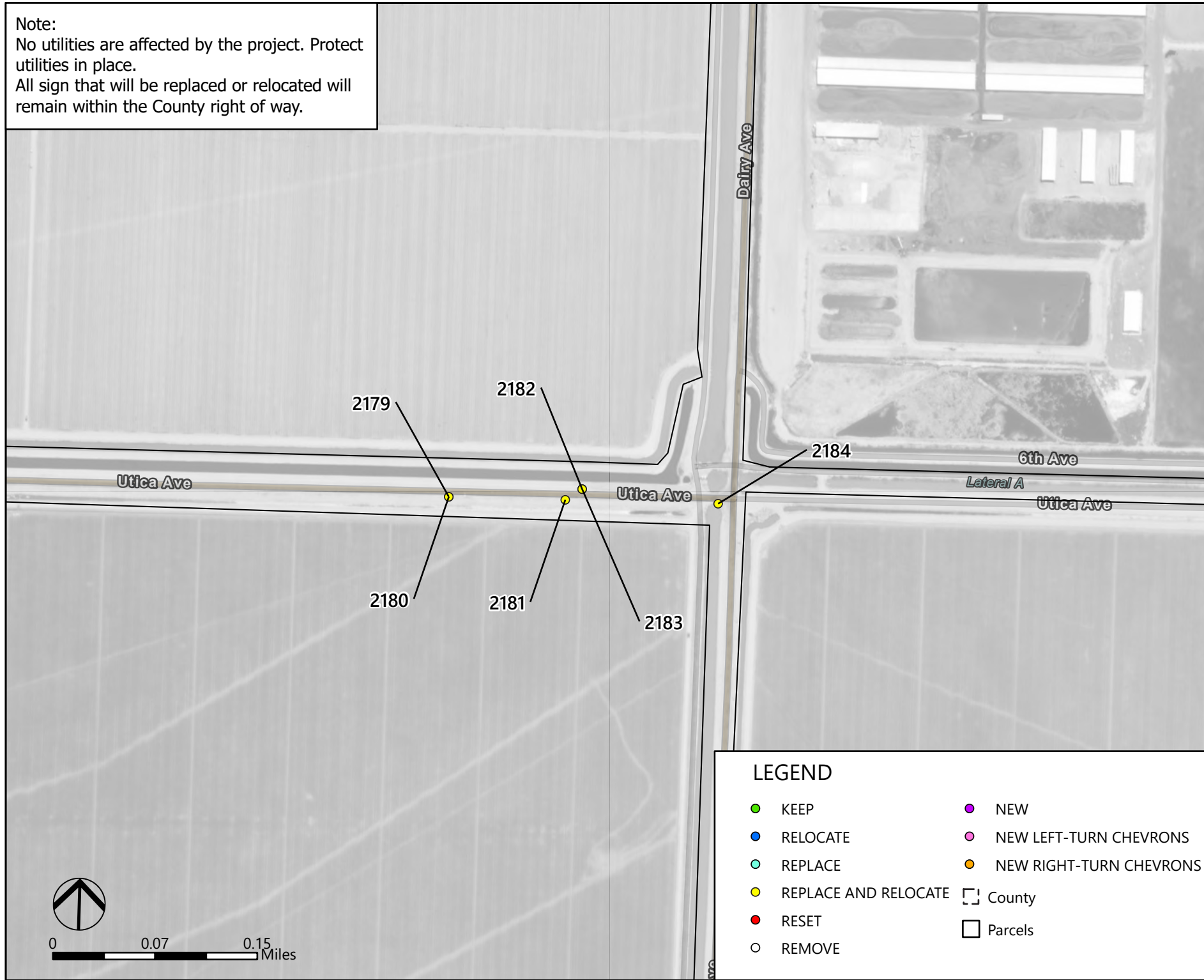
**MARK THOMAS**  
 7571 North Remington Avenue Suite 102 Fresno, CA 93711  
 (559) 447-1938  
 www.markthomas.com

**Kings County RSSA**  
 Recommendations for Signage Improvements  
 Utica Avenue



MT PROJECT NO.	22-00027
SCALE:	1:5,700
DESIGNED BY:	###
DRAWN BY:	DLG
CHECKED BY:	###
Date: 6/6/2024	Page 182 of 193

Note:  
 No utilities are affected by the project. Protect utilities in place.  
 All sign that will be replaced or relocated will remain within the County right of way.



EXISTING SIGN TABLE				FINAL RECOMMENDATION		
SIGN ID	MUTCD SIGN CODE	SIGN SIZE	SIGN FACING	PANEL	POST	LOCATION
2179	W34A(CA)	36X54	W	REPLACE IN KIND	SHARED POST WITH 2180	LATERAL RELOCATION
2180	W3-1	30X30	W	REPLACE IN KIND	REPLACE	RELOCATE 325 FEET FROM LIMIT LINE
2181	W3-1	30X30	W	REPLACE IN KIND	REPLACE	RELOCATE 325 FEET FROM LIMIT LINE
2182	R2-1	24X30	E	REPLACE IN KIND	REPLACE	LATERAL RELOCATION
2183	R48(CA)	24X30	E	REPLACE IN KIND	SHARED POST WITH 2182	LATERAL RELOCATION
2184	R1-1	30X30	W	REPLACE IN KIND	REPLACE	LATERAL RELOCATION

SIGN PLAN



**MARK THOMAS**  
 7571 North Remington Avenue Suite 102 Fresno, CA 93711  
 (559) 447-1938  
 www.markthomas.com

**Kings County RSSA**  
 Recommendations for Signage Improvements  
 Utica Avenue



MT PROJECT NO.	22-00027
SCALE:	1:5,700
DESIGNED BY:	###
DRAWN BY:	DLG
CHECKED BY:	###
Date: 6/6/2024	Page 183 of 193

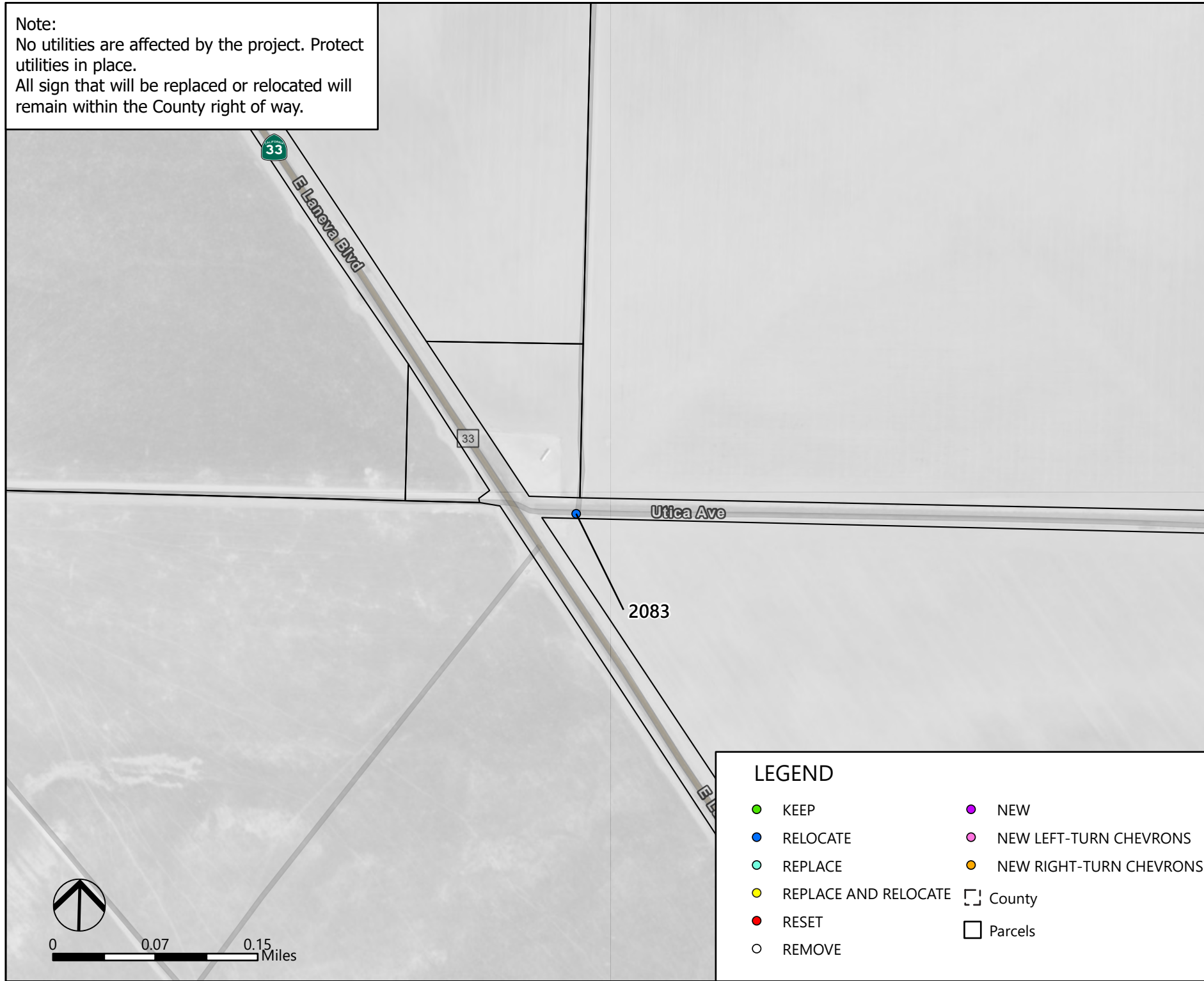
NO.	REVISION	DATE	BY

Note:  
 No utilities are affected by the project. Protect utilities in place.  
 All sign that will be replaced or relocated will remain within the County right of way.

**EXISTING SIGN TABLE**

**FINAL RECOMMENDATION**

SIGN ID	MUTCD SIGN CODE	SIGN SIZE	SIGN FACING	PANEL	POST	LOCATION
2083	R2-1	-	SW	KEEP	REPLACE	LATERAL RELOCATION



**LEGEND**

- KEEP
- NEW
- RELOCATE
- NEW LEFT-TURN CHEVRONS
- REPLACE
- NEW RIGHT-TURN CHEVRONS
- REPLACE AND RELOCATE
- County
- RESET
- Parcels
- REMOVE

**SIGN PLAN**

NO.	REVISION	DATE	BY



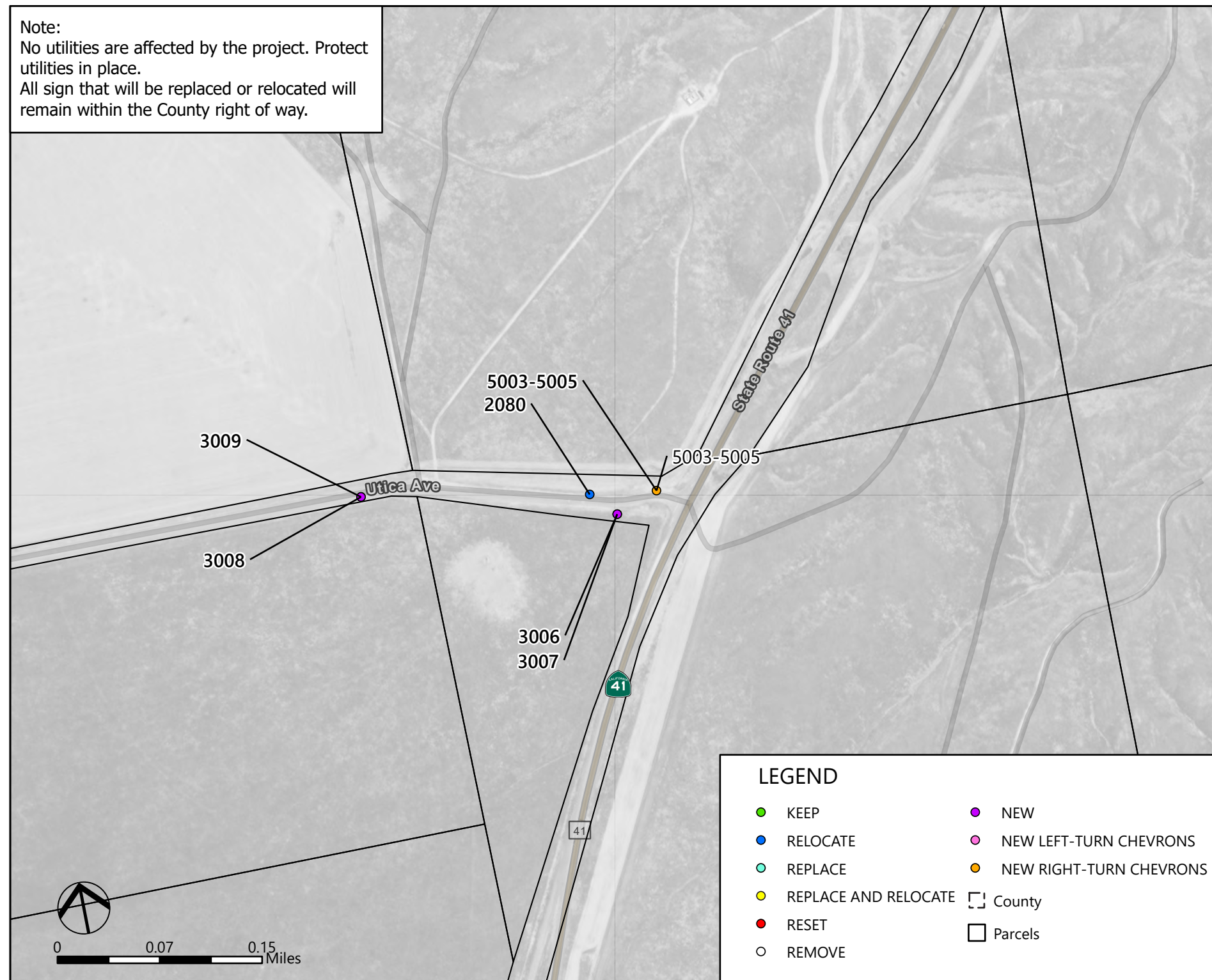
7571 North Remington Avenue Suite 102 Fresno, CA 93711  
 (559) 447-1938  
 www.markthomas.com

**Kings County RSSA**  
 Recommendations for Signage Improvements  
 Utica Avenue



MT PROJECT NO.	22-00027
SCALE:	1:5,700
DESIGNED BY:	###
DRAWN BY:	DLG
CHECKED BY:	###
Date: 6/6/2024	Page 184 of 193

Note:  
 No utilities are affected by the project. Protect utilities in place.  
 All sign that will be replaced or relocated will remain within the County right of way.



EXISTING SIGN TABLE				FINAL RECOMMENDATION		
SIGN ID	MUTCD SIGN CODE	SIGN SIZE	SIGN FACING	PANEL	POST	LOCATION
2080	R2-1	-	E	KEEP	REPLACE	LATERAL RELOCATION

NEW SIGN ID	CHEVRON RANGE	SIGN CODE	SIGN SIZE	SIGN FACING	FINAL RECOMMENDATION
3006		W1-4-R	30X30	W	INSTALL NEW W1-4-R ON NEW POST 225 FT BEFORE CURVE
3007		W13-1P (20)	18X18	W	INSTALL NEW W13-1P (20) ON NEW POST 225 FT BEFORE CURVE
3008		W1-2-R	30X30	W	INSTALL NEW W1-2-R ON NEW POST 100 FT BEFORE CURVE
3009		W13-1P (50)	18X18	W	INSTALL NEW W13-1P (50) ON NEW POST 100 FT BEFORE CURVE
	5003-5005	W1-8-R		W	INSTALL NEW W1-8-R ON NEW POST ALONG CURVE

SIGN PLAN

NO.	REVISION	DATE	BY

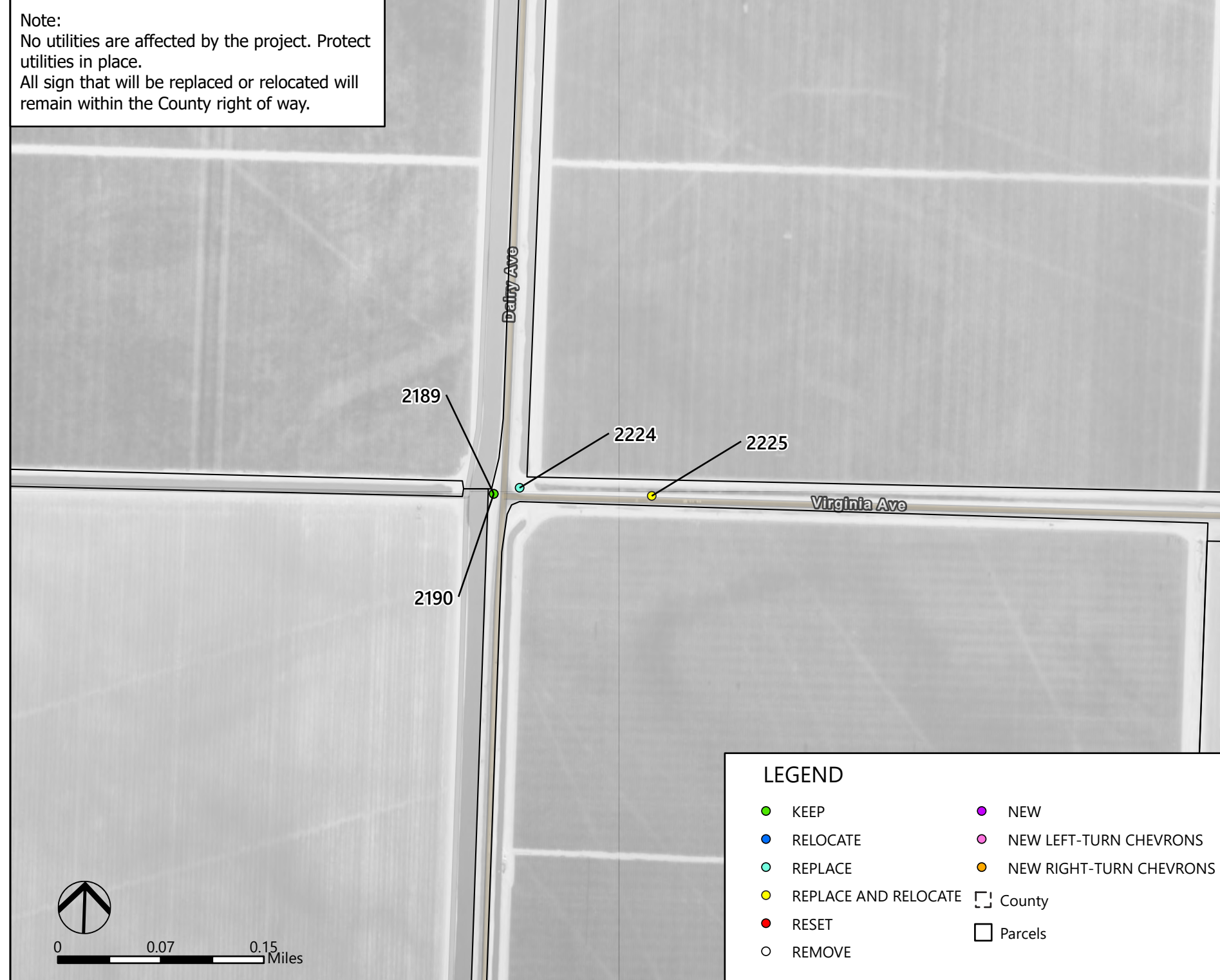
**MARK THOMAS**  
 7571 North Remington Avenue Suite 102 Fresno, CA 93711  
 (559) 447-1938  
 www.markthomas.com

**Kings County RSSA**  
 Recommendations for Signage Improvements  
 Utica Avenue



MT PROJECT NO.	22-00027
SCALE:	1:5,700
DESIGNED BY:	###
DRAWN BY:	DLG
CHECKED BY:	###
Date: 6/6/2024	Page 185 of 193

Note:  
 No utilities are affected by the project. Protect utilities in place.  
 All sign that will be replaced or relocated will remain within the County right of way.



EXISTING SIGN TABLE				FINAL RECOMMENDATION		
SIGN ID	MUTCD SIGN CODE	SIGN SIZE	SIGN FACING	PANEL	POST	LOCATION
2189	OM1-1	-	E	KEEP	SHARED POST WITH 2190	KEEP
2190	W1-7	-	E	KEEP	KEEP	KEEP
2224	R1-1	30X30	E	REPLACE SIGN AND ADJUST SIGN HEIGHT	REPLACE	KEEP
2225	W3-1	30X30	E	REPLACE IN KIND	REPLACE	RELOCATE 325 FEET FROM LIMIT LINE

SIGN PLAN

NO.	REVISION	DATE	BY

**MARK THOMAS**  
 7571 North Remington Avenue Suite 102 Fresno, CA 93711  
 (559) 447-1938  
 www.markthomas.com

**Kings County RSSA**  
 Recommendations for Signage Improvements  
 Virginia Avenue

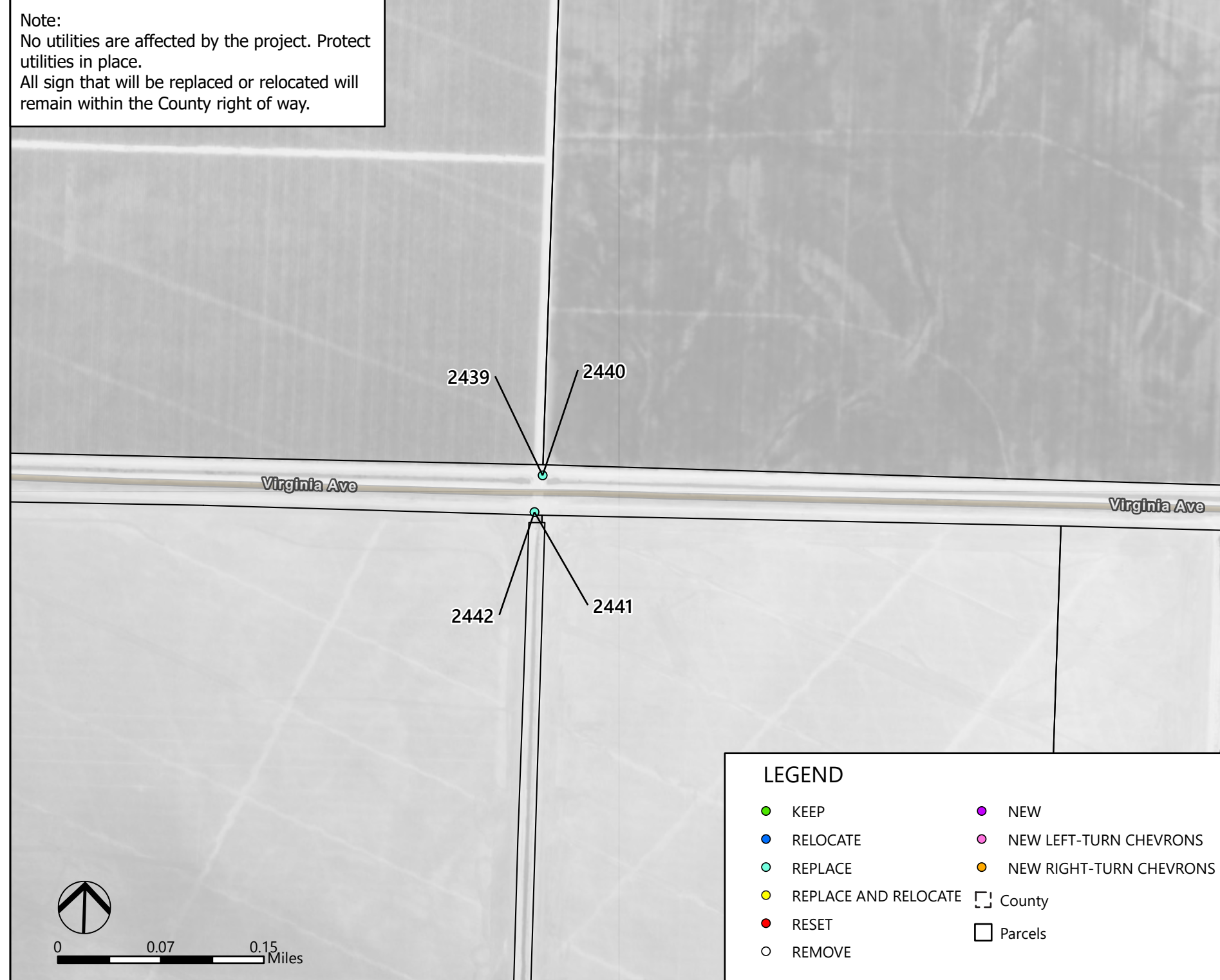


MT PROJECT NO.	22-00027
SCALE:	1:5,700
DESIGNED BY:	###
DRAWN BY:	DLG
CHECKED BY:	###
Date: 6/6/2024	Page 186 of 193

Path: J:\Kings Co-22-00027-RSSA\GVA\GIS\Kings County RSSA\Kings County RSSA.aprx



Note:  
 No utilities are affected by the project. Protect utilities in place.  
 All sign that will be replaced or relocated will remain within the County right of way.



EXISTING SIGN TABLE				FINAL RECOMMENDATION		
SIGN ID	MUTCD SIGN CODE	SIGN SIZE	SIGN FACING	PANEL	POST	LOCATION
2439	R2-1	24X30	S	REPLACE SIGN AND ADJUST SIGN HEIGHT	REPLACE	KEEP
2440	SR15(CA)	24X30	S	REPLACE SIGN AND ADJUST SIGN HEIGHT	SHARED POST WITH 2439	KEEP
2441	R2-1	24X30	N	REPLACE SIGN AND ADJUST SIGN HEIGHT	REPLACE	KEEP
2442	SR15(CA)	24X30	N	REPLACE SIGN AND ADJUST SIGN HEIGHT	SHARED POST WITH 2441	KEEP

SIGN PLAN

NO.	REVISION	DATE	BY

**MARK THOMAS**  
 7571 North Remington Avenue Suite 102 Fresno, CA 93711  
 (559) 447-1938  
 www.markthomas.com

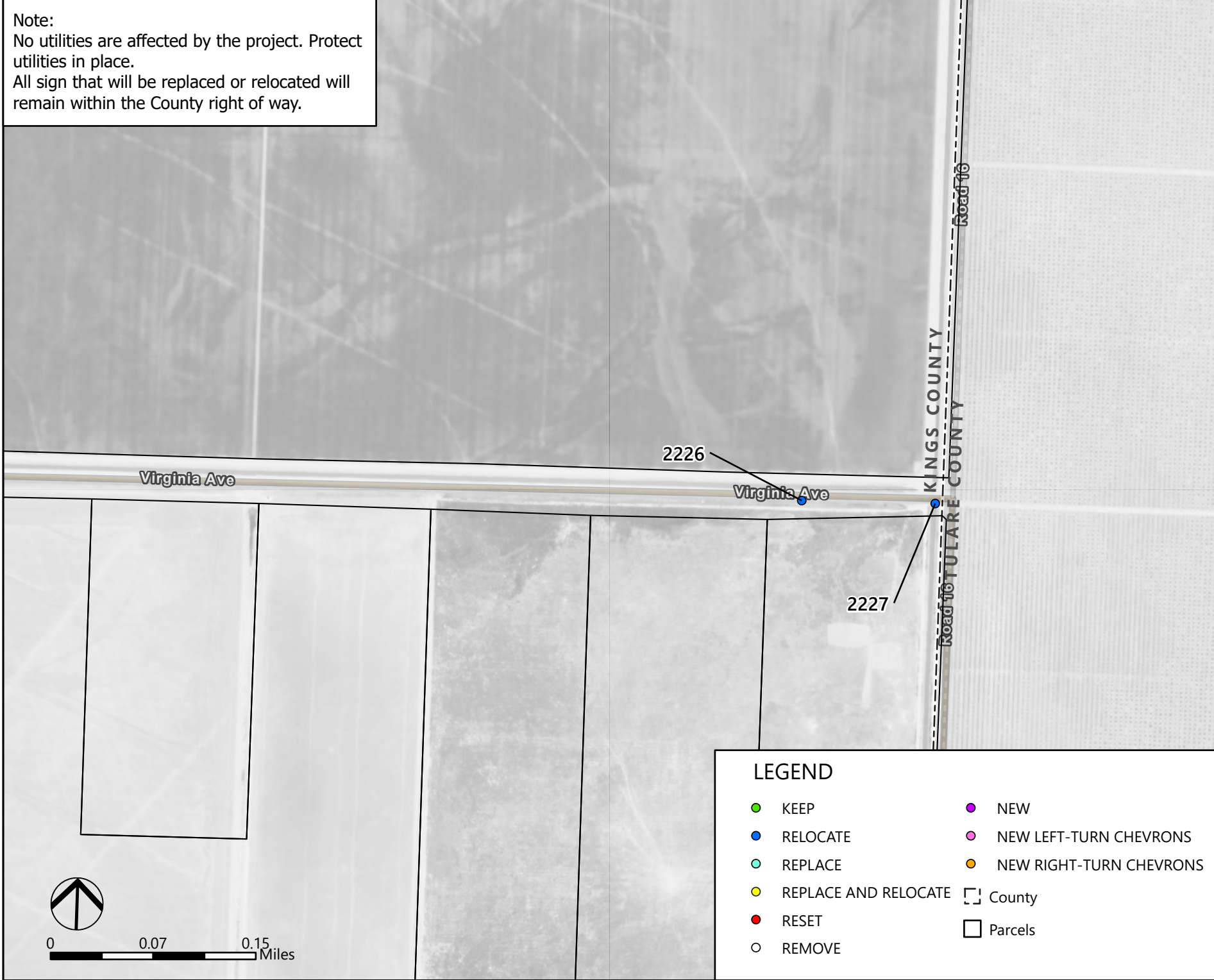
**Kings County RSSA**  
 Recommendations for Signage Improvements  
 Virginia Avenue



MT PROJECT NO.	22-00027
SCALE:	1:5,700
DESIGNED BY:	###
DRAWN BY:	DLG
CHECKED BY:	###
Date: 6/6/2024	Page 187 of 193

Path: J:\Kings Co-22-00027-RSSA\GVA\GIS\Kings County RSSA\Kings County RSSA.aprx

Note:  
 No utilities are affected by the project. Protect utilities in place.  
 All sign that will be replaced or relocated will remain within the County right of way.



EXISTING SIGN TABLE				FINAL RECOMMENDATION		
SIGN ID	MUTCD SIGN CODE	SIGN SIZE	SIGN FACING	PANEL	POST	LOCATION
2226	W3-1	-	W	KEEP	REPLACE	RELOCATE 325 FEET FROM LIMIT LINE
2227	R1-1	-	W	KEEP	REPLACE	LATERAL RELOCATION

**SIGN PLAN**

NO.	REVISION	DATE	BY

**MARK THOMAS**  
 7571 North Remington Avenue Suite 102 Fresno, CA 93711  
 (559) 447-1938  
 www.markthomas.com

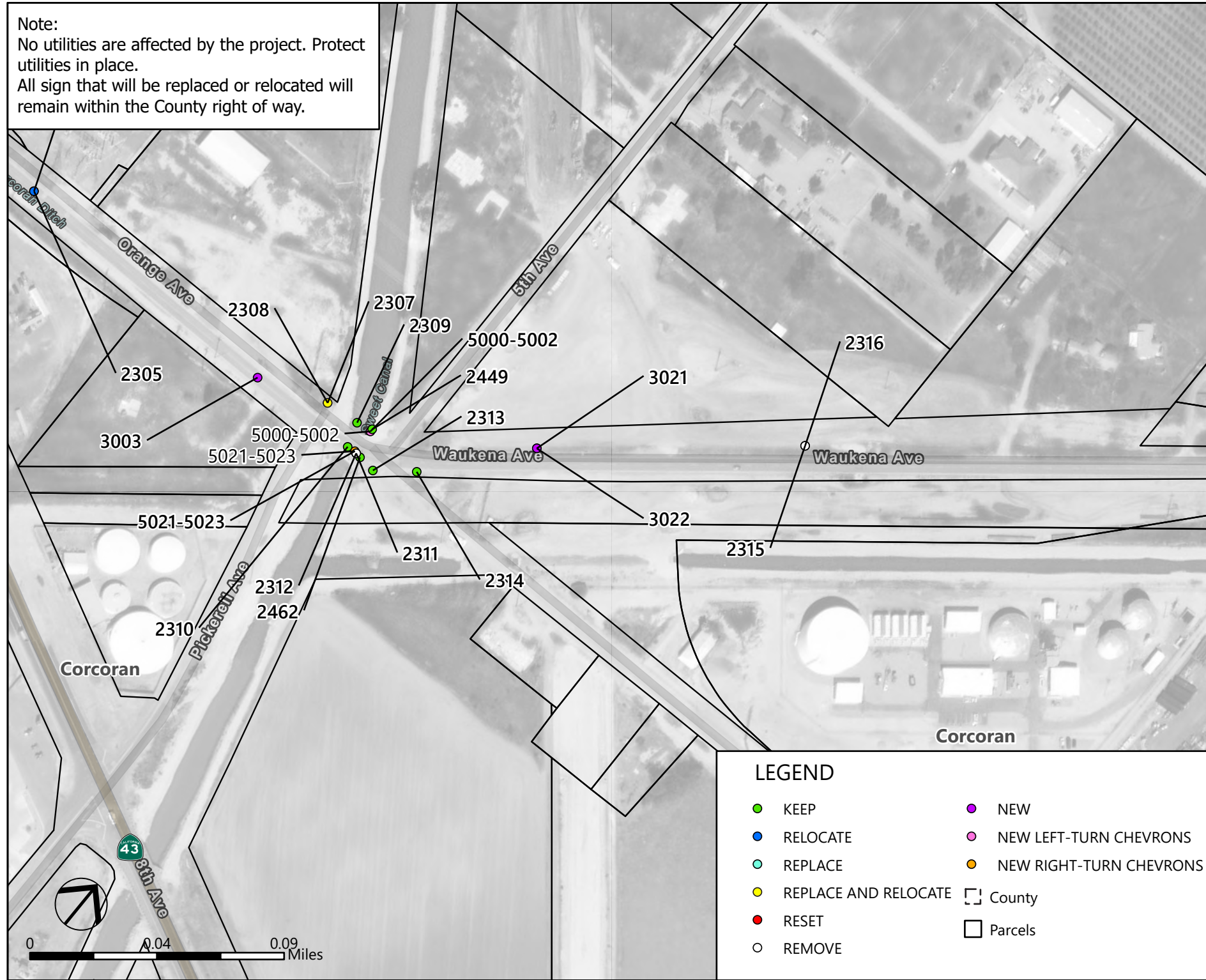
**Kings County RSSA**  
 Recommendations for Signage Improvements  
 Virginia Avenue



MT PROJECT NO.	22-00027
SCALE:	1:5,700
DESIGNED BY:	###
DRAWN BY:	DLG
CHECKED BY:	###
Date: 6/6/2024	Page 188 of 193

Path: J:\Kings Co-22-00027-RSSA\GVA\GIS\Kings County RSSA\Kings County RSSA.aprx

Note:  
No utilities are affected by the project. Protect utilities in place.  
All sign that will be replaced or relocated will remain within the County right of way.



EXISTING SIGN TABLE				FINAL RECOMMENDATION		
SIGN ID	MUTCD SIGN CODE	SIGN SIZE	SIGN FACING	PANEL	POST	LOCATION
2304	W13-1	-	W	KEEP	SHARED POST WITH 2305	RELOCATE 200 FEET IN ADVANCE OF CURVE
2305	W1-2-L	-	W	KEEP	REPLACE	RELOCATE 200 FEET IN ADVANCE OF CURVE
2307	OM1-1	18X18	S	REPLACE IN KIND	SHARED POST WITH 2308	LATERAL RELOCATION
2308	W1-7	48X24	S	REPLACE WITH LARGER	REPLACE	LATERAL RELOCATION
2309	OM-3-L	-	W	KEEP	KEEP	KEEP
2310	OM-3-R	-	N	KEEP	KEEP	KEEP
2311	W13-1	-	NE	REMOVE	SHARED POST WITH 2312	REMOVE
2312	W1-2-R	-	NE	REMOVE	REMOVE	REMOVE
2313	OM1-1	-	N	KEEP	KEEP	KEEP
2314	OM1-1	-	W	KEEP	KEEP	KEEP
2315	W1-2-R	-	NE	REMOVE	REMOVE	REMOVE
2316	W13-1	-	E	KEEP	SHARED POST WITH 2315	RELOCATE 200 FEET IN ADVANCE OF CURVE
2449	OM-3-R	-	E	KEEP	KEEP	KEEP
2462	OM-3-L	-	E	KEEP	KEEP	KEEP

NEW SIGN ID	CHEVRON RANGE	SIGN CODE	SIGN SIZE	SIGN FACING	FINAL RECOMMENDATION
3003		W1-1-L	30X30	W	INSTALL NEW W1-1-L ON NEW POST 200 FT BEFORE CURVE
3021		W1-1-R	30X30	NE	INSTALL NEW W1-1-R ON NEW POST 225 FT BEFORE CURVE
3022		W13-1P (25)	18X18	NE	INSTALL NEW W13-1P (25) ON NEW POST 225 FT BEFORE CURVE
5000-5002		W1-6-L		W	INSTALL NEW W1-6-L ON NEW POST ALONG CURVE
5021-5023		W1-6-R		NE	INSTALL NEW W1-6-R ON NEW POST ALONG CURVE

SIGN PLAN

NO.	REVISION	DATE	BY



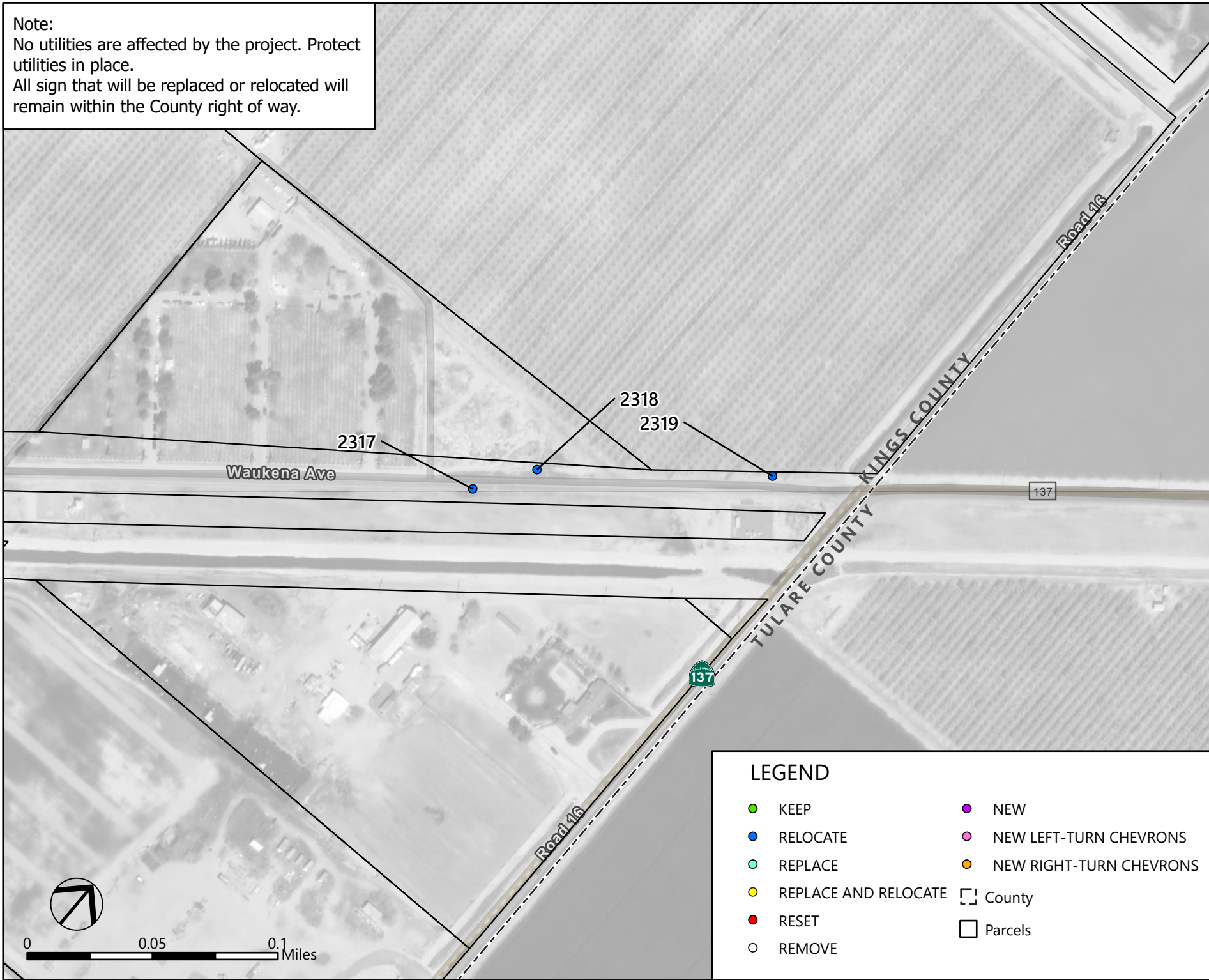
7571 North Remington Avenue Suite 102 Fresno, CA 93711  
(559) 447-1938  
www.markthomas.com

Kings County RSSA  
Recommendations for Signage Improvements  
Waukena Avenue



MT PROJECT NO. 22-00027  
SCALE: 1:2,600  
DESIGNED BY: ###  
DRAWN BY: DLG  
CHECKED BY: ###  
Date: 6/6/2024 Page 189 of 193

Note:  
 No utilities are affected by the project. Protect utilities in place.  
 All sign that will be replaced or relocated will remain within the County right of way.



EXISTING SIGN TABLE				FINAL RECOMMENDATION		
SIGN ID	MUTCD SIGN CODE	SIGN SIZE	SIGN FACING	PANEL	POST	LOCATION
2317	W3-1	-	NE	KEEP	REPLACE	RELOCATE 325 FEET FROM LIMIT LINE
2318	CUSTOM	-	E	KEEP	REPLACE	LATERAL RELOCATION
2319	R2-1	-	NE	KEEP	REPLACE	LATERAL RELOCATION

SIGN PLAN

NO.	REVISION	DATE	BY

**MARK THOMAS**  
 7571 North Remington Avenue Suite 102 Fresno, CA 93711  
 (559) 447-1938  
 www.markthomas.com

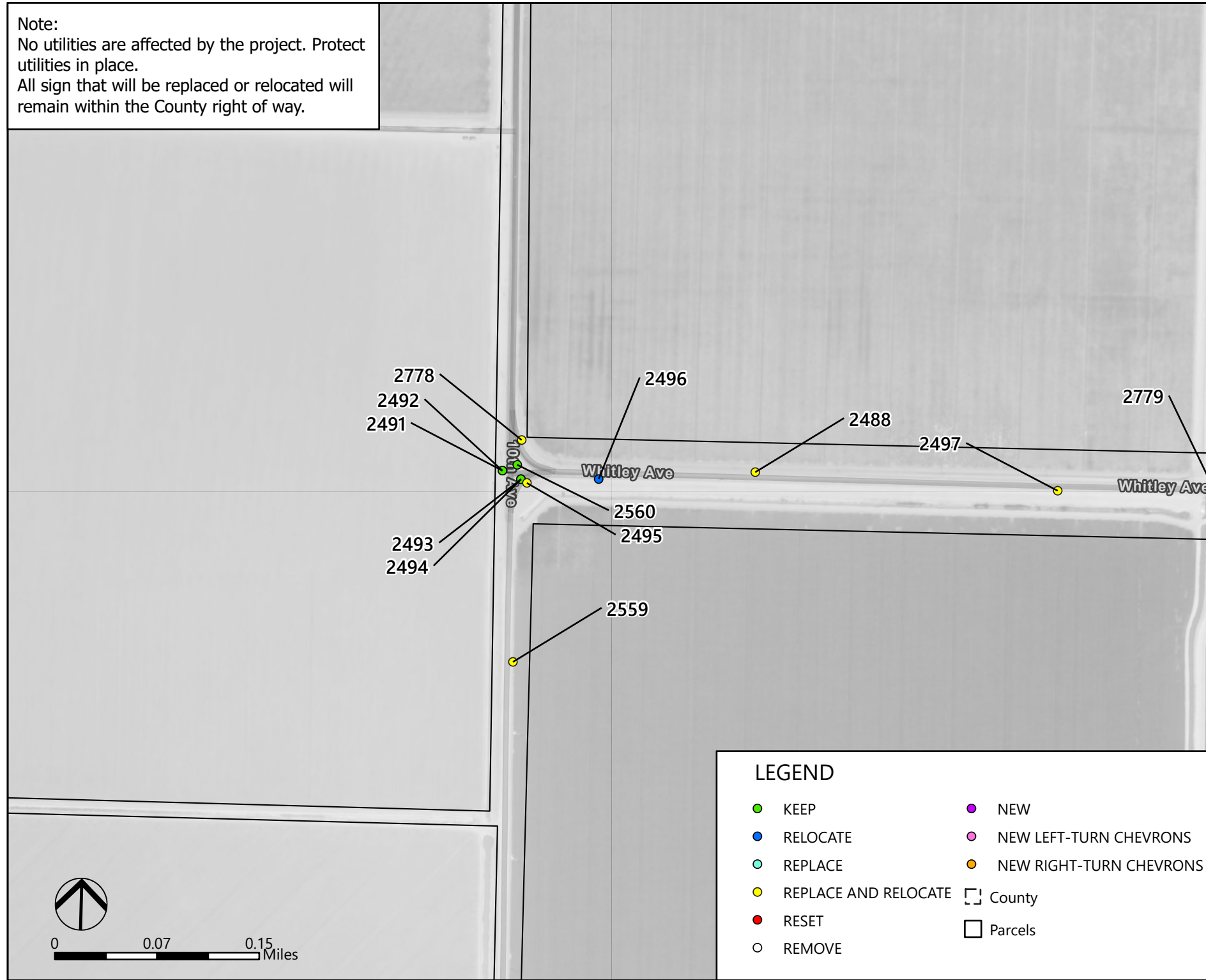
**Kings County RSSA**  
 Recommendations for Signage Improvements  
 Waukena Avenue



MT PROJECT NO.	22-00027
SCALE:	1:3,100
DESIGNED BY:	###
DRAWN BY:	DLG
CHECKED BY:	###
Date: 6/6/2024	Page 190 of 193

Path: J:\Kings Co-22-00027-RSSA\GVA\GIS\Kings County RSSA\Kings County RSSA.aprx

Note:  
 No utilities are affected by the project. Protect utilities in place.  
 All sign that will be replaced or relocated will remain within the County right of way.



EXISTING SIGN TABLE				FINAL RECOMMENDATION		
SIGN ID	MUTCD SIGN CODE	SIGN SIZE	SIGN FACING	PANEL	POST	LOCATION
2488	W3-1	30X30	E	REPLACE IN KIND	REPLACE	RELOCATE 325 FEET FROM LIMIT LINE
2491	W1-7	-	E	KEEP	KEEP	KEEP
2492	OM1-1	-	E	KEEP	SHARED POST WITH 2491	KEEP
2493	R5-1A	-	NE	KEEP	SHARED POST WITH 2494	KEEP
2494	R5-1	-	NE	KEEP	KEEP	KEEP
2495	R1-2	36X36	SW	REPLACE WITH LARGER	REPLACE	LATERAL RELOCATION
2496	R2-1	-	W	KEEP	REPLACE	LATERAL RELOCATION
2497	W5-2	36X36	W	REPLACE WITH LARGER	REPLACE	LATERAL RELOCATION
2559	W2-2	30X30	S	REPLACE WITH LARGER	REPLACE	LATERAL RELOCATION
2560	R1-1	-	E	KEEP	KEEP	KEEP
2777	OM-3-L	12X36	NW	REPLACE IN KIND	KEEP	KEEP
2778	R1-2	36X36	S	REPLACE WITH LARGER	REPLACE	LATERAL RELOCATION
2779	OM-3-R	-	W	KEEP	KEEP	KEEP

SIGN PLAN

NO.	REVISION	DATE	BY

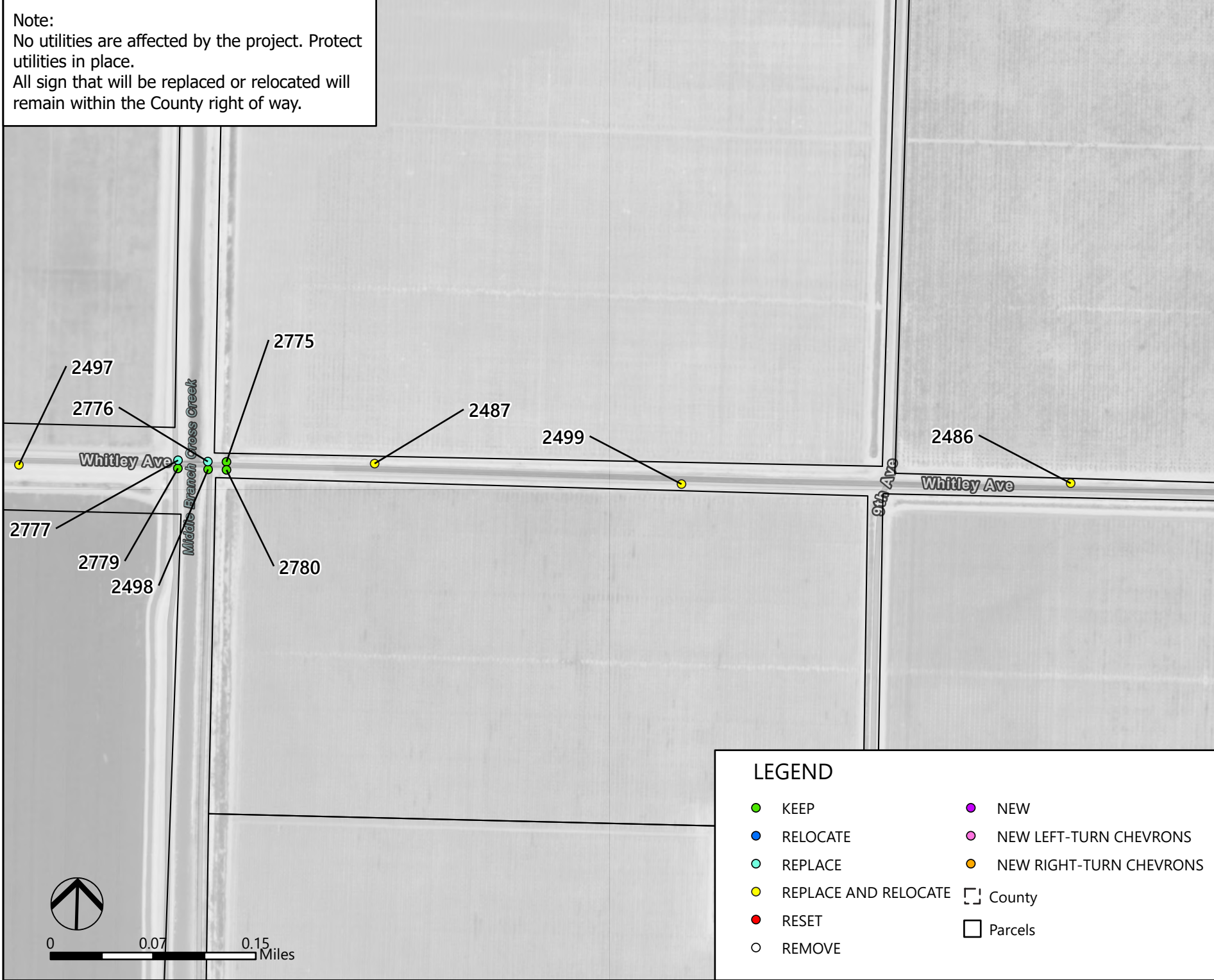
**MARK THOMAS**  
 7571 North Remington Avenue Suite 102 Fresno, CA 93711  
 (559) 447-1938  
 www.markthomas.com

**Kings County RSSA**  
 Recommendations for Signage Improvements  
 Whitley Avenue



MT PROJECT NO. 22-00027  
 SCALE: 1:5,700  
 DESIGNED BY: ###  
 DRAWN BY: DLG  
 CHECKED BY: ###  
 Date: 6/6/2024 Page 191 of 193

Note:  
 No utilities are affected by the project. Protect utilities in place.  
 All sign that will be replaced or relocated will remain within the County right of way.



EXISTING SIGN TABLE				FINAL RECOMMENDATION		
SIGN ID	MUTCD SIGN CODE	SIGN SIZE	SIGN FACING	PANEL	POST	LOCATION
2486	W8-6	36X36	E	REPLACE WITH LARGER	REPLACE	LATERAL RELOCATION
2487	W5-2	36X36	E	REPLACE WITH LARGER	REPLACE	LATERAL RELOCATION
2497	W5-2	36X36	W	REPLACE WITH LARGER	REPLACE	LATERAL RELOCATION
2498	OM-3-L	-	E	KEEP	KEEP	KEEP
2499	W8-6	36X36	W	REPLACE IN KIND	REPLACE	LATERAL RELOCATION
2775	OM-3-R	-	S	KEEP	KEEP	KEEP
2776	OM-3-R	12X36	E	REPLACE IN KIND	REPLACE	KEEP
2777	OM-3-L	12X36	NW	REPLACE IN KIND	KEEP	KEEP
2779	OM-3-R	-	W	KEEP	KEEP	KEEP
2780	OM-3-L	-	E	KEEP	KEEP	KEEP

SIGN PLAN

NO.	REVISION	DATE	BY

**MARK THOMAS**  
 7571 North Remington Avenue Suite 102 Fresno, CA 93711  
 (559) 447-1938  
 www.markthomas.com

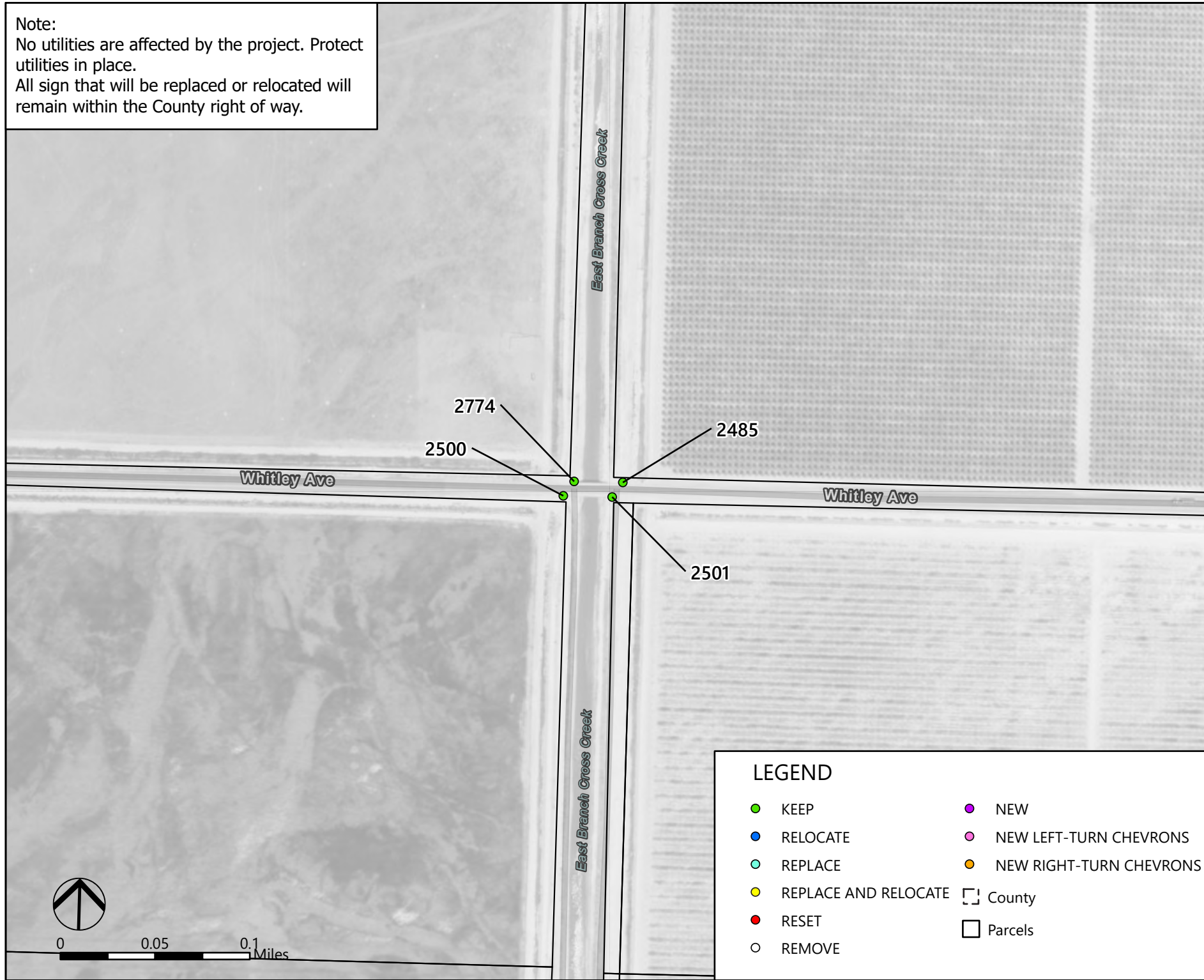
**Kings County RSSA**  
 Recommendations for Signage Improvements  
 Whitley Avenue



MT PROJECT NO.	22-00027
SCALE:	1:5,700
DESIGNED BY:	###
DRAWN BY:	DLG
CHECKED BY:	###
Date: 6/6/2024	Page 192 of 193

Path: J:\Kings Co-22-00027-RSSA\GVA\GIS\Kings County RSSA\Kings County RSSA.aprx

Note:  
 No utilities are affected by the project. Protect utilities in place.  
 All sign that will be replaced or relocated will remain within the County right of way.



EXISTING SIGN TABLE				FINAL RECOMMENDATION		
SIGN ID	MUTCD SIGN CODE	SIGN SIZE	SIGN FACING	PANEL	POST	LOCATION
2485	OM-3-R	-	S	KEEP	KEEP	KEEP
2500	OM-3-R	-	SW	KEEP	KEEP	KEEP
2501	OM-3-L	-	E	KEEP	KEEP	KEEP
2774	OM-3-L	-	W	KEEP	KEEP	KEEP

SIGN PLAN

NO.	REVISION	DATE	BY

**MARK THOMAS**  
 7571 North Remington Avenue Suite 102 Fresno, CA 93711  
 (559) 447-1938  
 www.markthomas.com

**Kings County RSSA**  
 Recommendations for Signage Improvements  
 Whitley Avenue



MT PROJECT NO.	22-00027
SCALE:	1:4,100
DESIGNED BY:	###
DRAWN BY:	DLG
CHECKED BY:	###
Date: 6/6/2024	Page 193 of 193