



KINGS COUNTY

Update Of County Roads Flooded In The
Tulare Lake Basin
March 12, 2024



OVERVIEW

- Background
 - Patricio Villegas & Mitchel Cabrera
- FEMA Information
 - Erik Urena
- Fiscal Impact
 - Kyria Martinez
- Questions



BACKGROUND

- Disaster Declaration
 - CA23-3 / February 2023
- 60 miles of county roads were flooded as a result
 - Roadway classification
 - County staff working on disaster aid relief funding
 - 33 miles FEMA & 27 miles FHWA/Caltrans
- County Bridges
 - Houston Ave Bridge - full replacement
 - Various Bridges – scour repair



BACKGROUND (Cont)

- Road Closures
 - Safety
 - Submerged roads policies
- Damages
 - Visible and non-visible

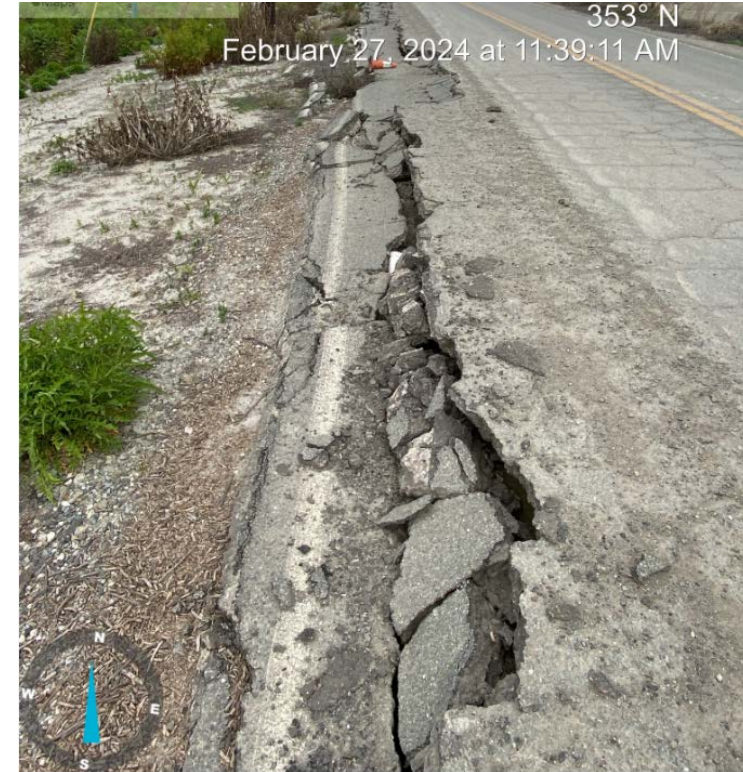


BACKGROUND (Cont)

- Geotechnical Investigation
 - Site Reconnaissance
 - 10 roadway sections evaluated
 - Completed November 17, 2023
 - Purpose
 - Findings



10th AVENUE





4th AVENUE





PUEBLO AVENUE & NEWTON AVENUE





NEVADA AVENUE





RACINE AVENUE



WITT ÓBRIEN'S

ambipar[®]
response

WITH YOU WHEN IT COUNTS

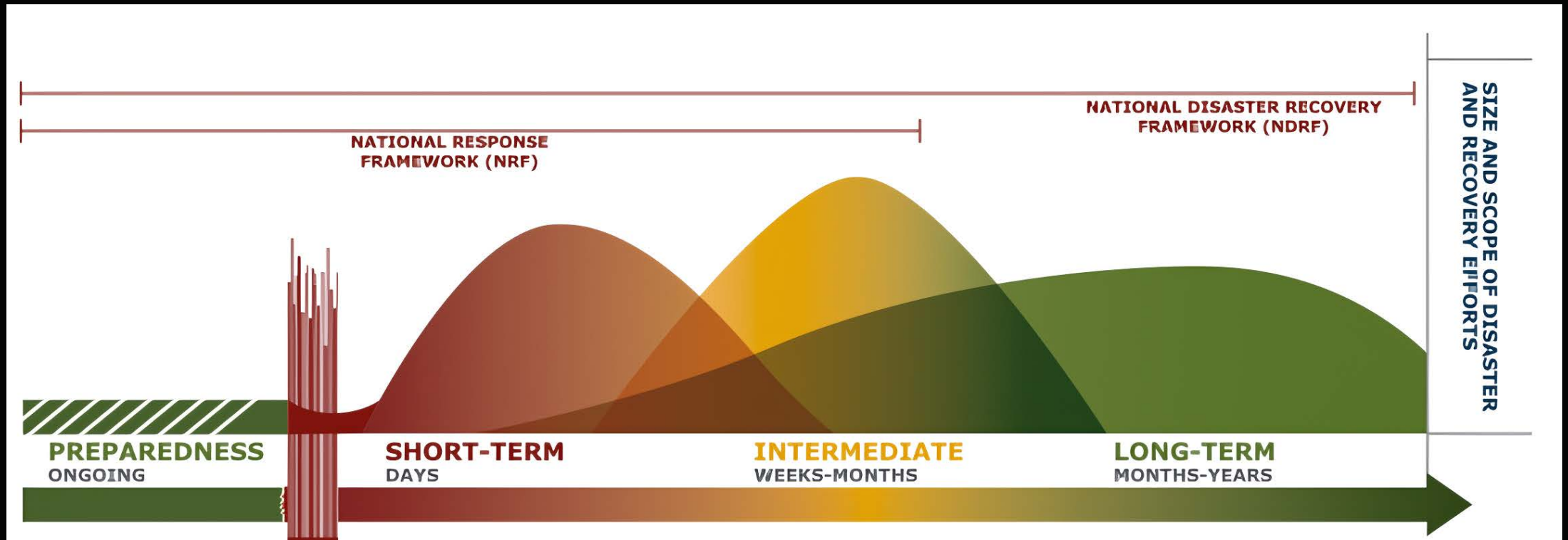
KINGS COUNTY

Disaster Recovery Briefing

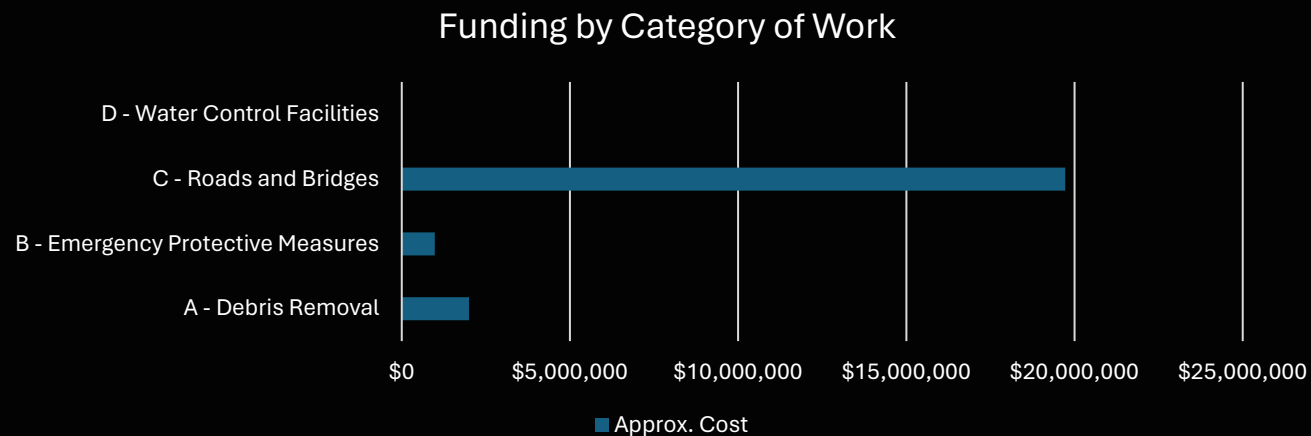
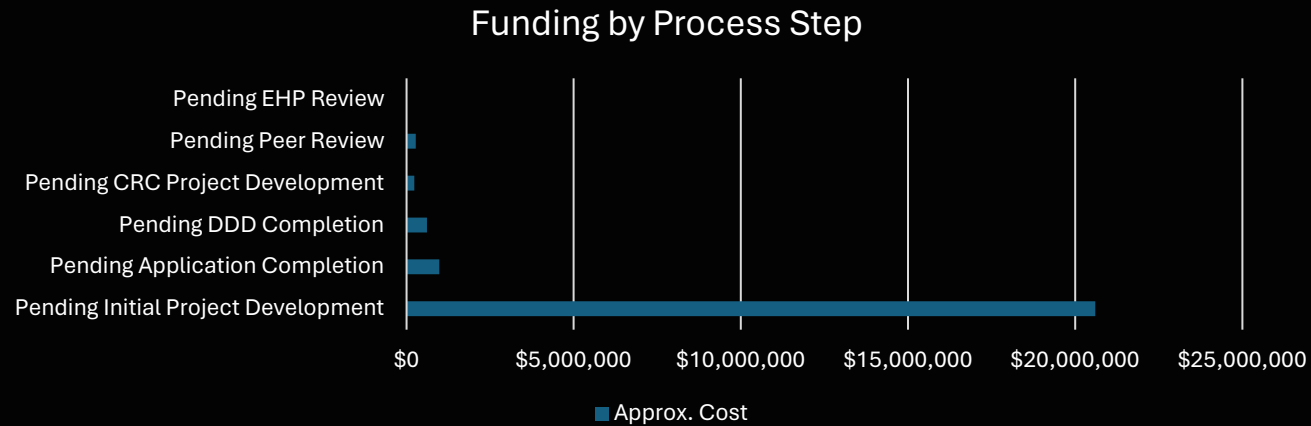
March 12th, 2024

wittobriens.com

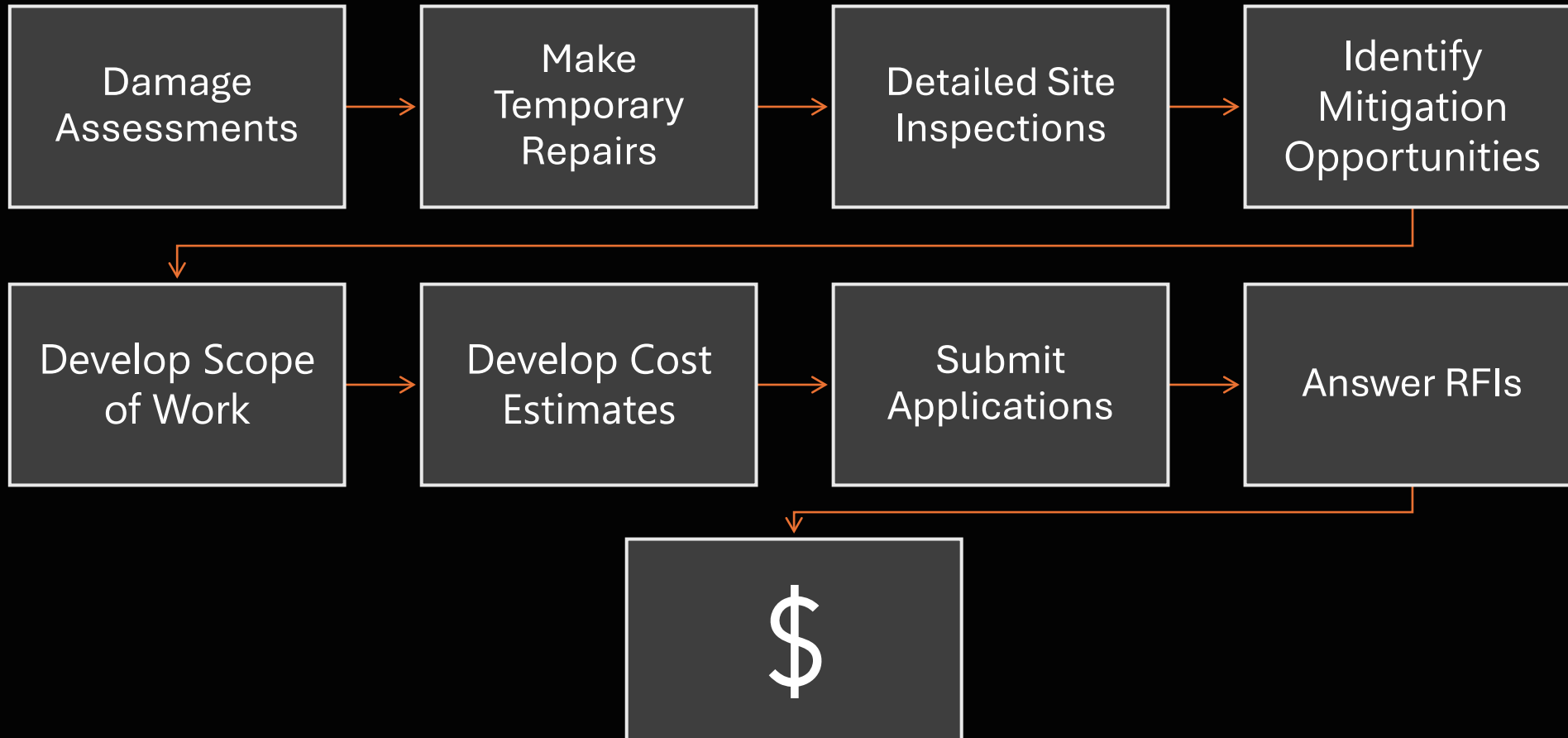
Disaster timeline



DR-4699 Overview



Grant Funding Process



Key Issues

- Ongoing conversations with the State over submerged roads in the lake basin.
 - Eligibility considerations for opening previously submerged roads.
 - Continuous environmental permitting and monitoring + Public Notices.
 - FEMA has struggled to perform and complete site inspections in a timely manner.
-



Submerged Roads

- Damage to submerged roads is only eligible in areas that have visible surface damage.
 - Damage from pre-maturely opening roads is **not** eligible.
 - Witt O'Brien's is working with the state to identify funding for sections of roads without visible surface damage.
-





FISCAL IMPACT

- Total cost to repair 20 County roads being requested for FEMA funding is \$25,776,931.
- The total amount of funding being requested through the FHWA is \$35,944,453 which includes \$30,565,940 in FHWA roads and \$5,378,523 for the Houston Ave. Bridge.
- The county is working to secure FEMA funding for all road repairs.
- Current FEMA stance has been to follow their submerged road policy where FEMA will only reimburse for visible surface damage caused by the natural disaster.
- County staff, in collaboration with our disaster recovery cost consultant, are actively engaged in efforts with Tulare County and CalOES to advocate for a revision to FEMA's reimbursement rule regarding road repairs.



Questions?