



KINGS COUNTY

Overview Temporary County Shelter
March 5, 2024



Overview

- Types of housing
- Current Emergency Shelter and Transitional Housing
- Permanent Housing Projects
- Proposal Overview
- Similar Projects- City of Tulare
- Factors to Consider



Types of Housing

Definitions	
Emergency Shelter	A facility with the primary purpose of providing temporary shelter for homeless people.
Transitional Housing	A program that provides temporary housing and supportive services for up to 24 months with the intent for the person to move towards permanent housing.
Rapid Rehousing	A program that provides financial assistance, housing subsidies, and supportive services to help those experiencing homelessness to be quickly re-housed and stabilized. This is considered permanent housing.
Permanent Supportive Housing	A program designed to provide housing and supportive services on a long-term basis to formerly homeless people that have a disabling condition.

*Source: Kings County 2019 Homelessness Gaps Analysis



Current Emergency Shelter & Transitional Housing

Agency	Temporary Shelter Type & Target Population
Kings Community Action Organization	> ES: domestic violence survivors
Kings Gospel Mission	> ES: single men or women (separate facilities) > TH: single men or women (separate facilities) with substance use disorders; must be committed to sobriety, participate in random drug screenings, and attend a weekly house meeting > Recuperative Room & Board: single men or women exiting the hospital
Kings County Human Services Agency	> ES: families participating in CalWORKs

*Source: Kings County 2019 Homelessness Gaps Analysis



Permanent Housing Projects

- Triangle Courtyard- 20 units by April 2024
- Sunrise Apartments- 22 apartments to be completed May 2024
- NorthStar-72 units estimate opening as early as late May 2024
- Behavioral Health Bridge Housing- TBD waiting BOS approval- 27 units at holiday lodge



Proposal



*Source Placer County

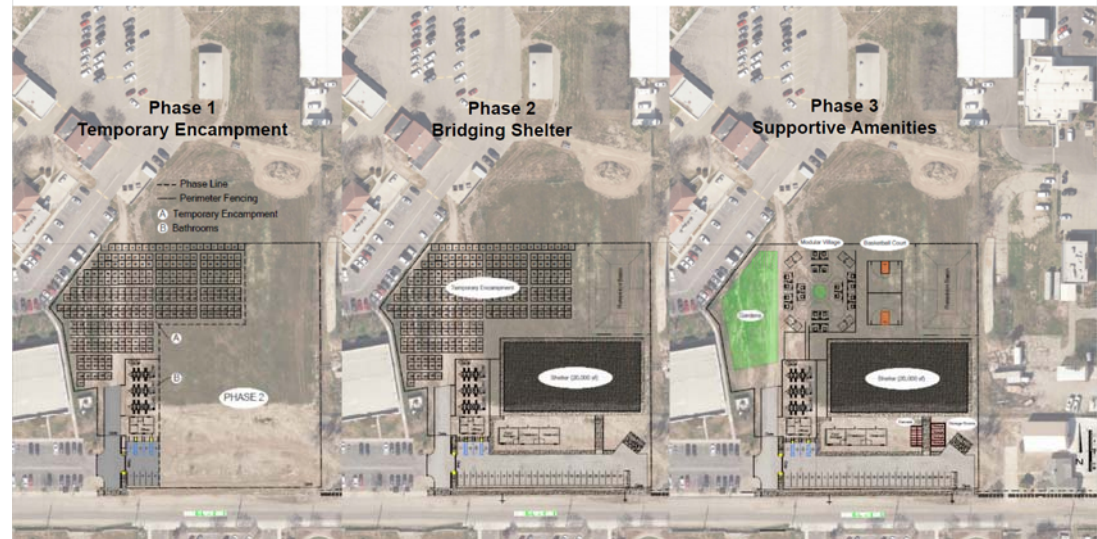


Similar Projects Near By

City of Tulare has a temporary shelter however, their permanent structure is underway and fully funded.

- City's approach Phasing Plan
 - Phase I (Temporary Encampment), Phase II (Permanent Shelter)

Temporary Encampment





Factors to Consider

- Fiscal Impact
- Cost- on going expense
- Space Planning project undergoing at the County
- Liability to the County-Placer County
- Longer term plan of permanent shelter
- Ongoing running of the shelter
- This is only temporary, the county will have to face closing the facility



Closing