



# KINGS COUNTY COMMUNITY DEVELOPMENT AGENCY

Bill Zumwalt, Director

## PLANNING DIVISION

Greg Gatzka, Deputy Director – Planning

Web Site: <http://www.countyofkings.com/planning/index.html>

### Notice of Preparation (NOP) & Notice of Scoping Meeting for the Draft Program Environmental Impact Report for the 2035 Kings County General Plan

To: State Agencies  
Responsible Agencies  
Local and Public Agencies  
Interested Parties  
State Clearinghouse

From: County of Kings  
Community Development Agency  
Planning Division  
1400 W. Lacey Blvd, Bldg 6  
Hanford, CA 93230

The Kings County Community Development Agency is the lead agency for the preparation and review of the Program Environmental Impact Report (EIR) for the 2035 Kings County General Plan. Pursuant to section 15082 of the California Environmental Quality Act (CEQA), the County is soliciting views from your agency as to the scope and content of the environmental information which is germane to your agency's statutory responsibilities in connection with the proposed project. The department will also accept written comments concerning the scope and content of the EIR from interested persons and organizations concerned with the project.

A summary of the project description and Initial Study detailing the probable environmental effects associated with the 2035 Kings County General Plan may be found online at the Kings County Community Development Agency website [www.countyofkings.com/planning/gen\\_plan\\_adv\\_com.html](http://www.countyofkings.com/planning/gen_plan_adv_com.html). To arrange an alternative delivery method please contact Jeremy Kinney with the Community Development Agency at (559) 582-3211 extension 2673. The Draft 2035 General Plan including all associated background studies and maps will be available for review at the Kings County Community Development Agency, all Kings County Library locations, and online at [www.countyofkings.com/planning/index.html](http://www.countyofkings.com/planning/index.html). Time limits required by State law, mandate your response to be sent at the earliest possible date but not later than 30 days after receipt of this notice.

A public information/scoping meeting will be held on **Monday, December 15, 2008** in the Kings County Board of Supervisors Chambers located at 1400 W. Lacey Blvd., Building 1, at 7:00 pm. All interested agencies, parties, and members of the general public are encouraged to attend.

Date:

Nov. 26, 2008

Signature:

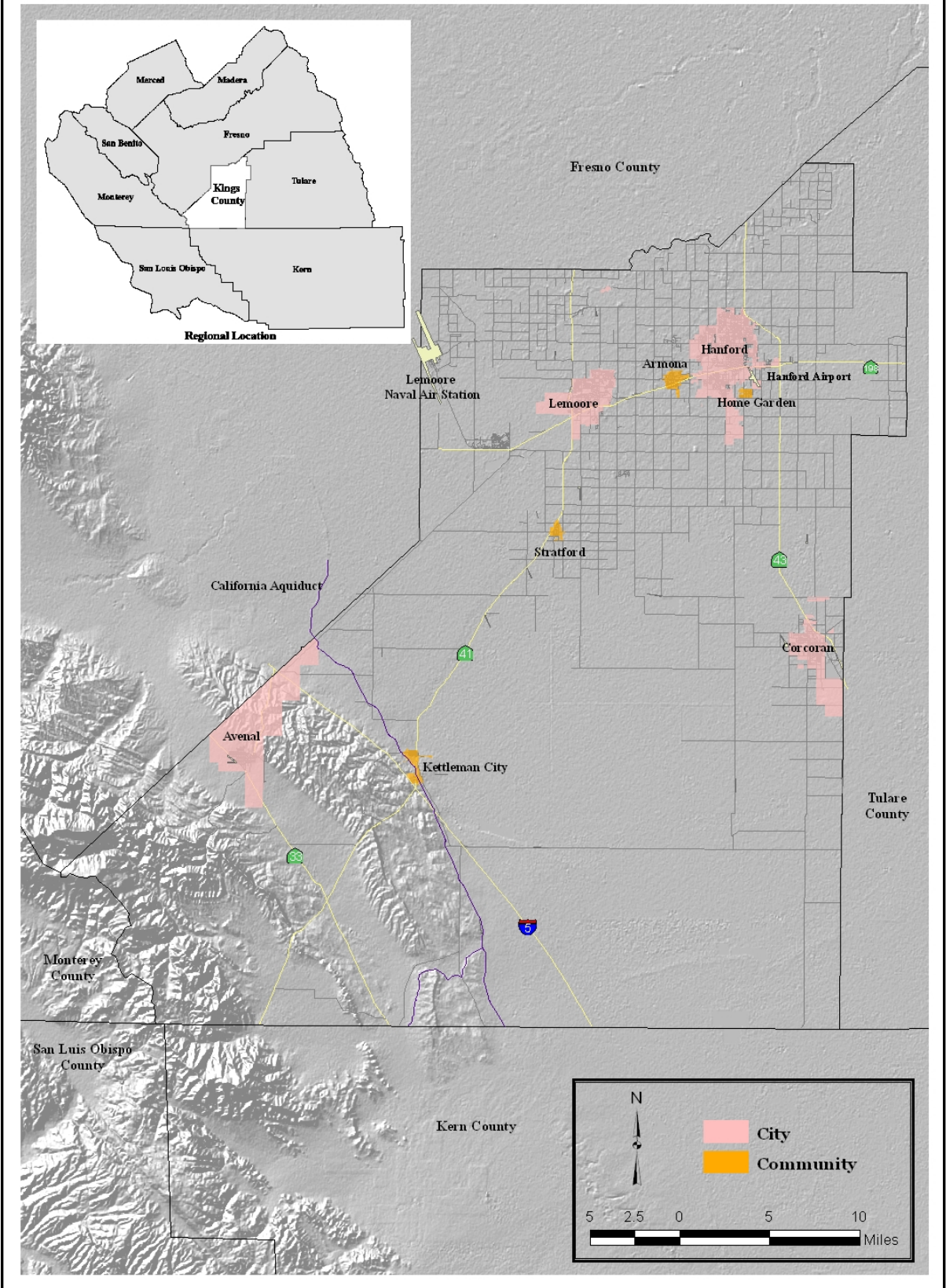
William R. Zumwalt

Bill Zumwalt

Title: Community Development Agency Director

Telephone: (559) 582-3211

**Figure 1 - Kings County 2035 General Plan NOP  
County and Regional Location Map**



## I. PROJECT DESCRIPTION

The Kings County General Plan, with the last comprehensive update adopted on December 28, 1993, has had fifteen amendments between 1994 and 2004, and included a new optional Dairy Element adopted on July 30, 2002, and 2003 Housing Element update adopted on January 27, 2004. The 2035 Kings County General Plan represents the County's latest comprehensive effort to bring the County general plan up to date and current with local and regional conditions, and State legislative changes. The general plan update includes updates to the Land Use, Resource Conservation, Open Space, Circulation, Safety, and Noise Elements. As part of the general plan update, the County also developed four community plans to address growth and restraint issues in the County's four unincorporated communities which serve as the most likely areas to accommodate County unincorporated urban growth. The four community plans cover the unincorporated communities of Armona, Home Garden, Kettleman City, and Stratford, which are served by either a Community Services District or Public Utilities District. A new Air Quality Element has also been developed to address local green house gas emission reduction efforts, and ties County local land use planning with regional planning efforts to better address urban growth and emissions within the San Joaquin Valley. The 2003 Housing Element and 2002 Dairy Element with its own EIR are not part of the general plan update, and therefore not considered part of this project. Both of these elements will continue in force on their own merit. A 2009 Housing Element is under development, but on its own separate adoption timeline in 2009 and being done jointly with the County's four Cities of Avenal, Corcoran, Hanford and Lemoore.

Notable changes from the 1993 Kings County General Plan to the proposed 2035 Kings County General Plan includes the following:

### 1. **Land Use Element -**

The Land Use Element has been reorganized to group land use policies into five distinctive categories that are reflective of the County's unincorporated environment. Modeled after the Rural-to-Urban transect approach to smart growth, the County's land use policies are grouped for ease of reference into "Natural Lands", "Agriculture and Open Space", "Rural Interface", "Community Districts", and "Urban Fringe". An additional section has been added to address procedural requirements and review criteria for any new community or new city proposals. Previously existing Land Use policies have been organized into the five environment categories. County land use policies will continue to direct urban growth to the four incorporated cities in "Urban Fringe" areas, restrict growth to pre-existing urban land use pockets of "Rural Interface" areas, provide policies for new communities through specific plan/new community procedures, and guide sustainable community growth in "Community Districts" through a detailed individual Community Plan for each area. Minor land use changes are proposed to resolve the General Plan consistency with the County's Zoning Ordinance. Community Plan areas represent the most substantial land use changes, and are the only areas with expanded urban growth in the County unincorporated areas to accommodate future urban growth. Land use and planned urban growth are addressed in greater detail in each of the four community plans.

### 2. **Resource Conservation Element -**

The Resource Conservation Element has been updated with more informative discussion and policy guidance on valued resources within the County. Policy sections include Water, Natural Lands, Agriculture, Prime Soils, Native Plant & Animal Habitat, Threatened & Endangered Species, Fishing, Energy, Mineral, and Archeological/Cultural/Historical resources. A new Biological Resources Survey is included that substantially updates the County's previous 1993 Biological Resources Survey, and provides up to date regulatory requirements and species



habitat information. An Agricultural Land Conversion Study was also prepared to analyze the County's loss of prime agricultural land and explore options for mitigating the loss of agricultural land resources. Policy changes in this element primarily consist of guiding policies to address existing and projected conditions for each of the resources identified above. Policies addressing agricultural mitigation represent the most significant change which seeks to enhance preservation of the County's valued agricultural resources.

**3. Open Space Element -**

The Open Space Element has been updated to bring additional information and guiding policies for the preservation of agriculture, scenic resources, outdoor recreation, and open space buffers around communities and the Naval Air Station, Lemoore.

**4. Circulation Element -**

The Circulation Element has been updated with existing and projected traffic counts and levels of service. Additional information has been added to provide more detailed information on transportation options and connectivity throughout the County. Substantial changes in policy direction involve stronger emphasis on integrating traffic calming measures and pedestrian and bicycle infrastructure in Community District areas that could greatly benefit from alternative transportation modes. Traffic calming measures and pedestrian street designs are addressed in more detail within each of the community plans. The growing importance of the County's vanpool options are also highlighted as a program that is making substantial reductions to vehicle miles traveled and air emissions.

**5. Health & Safety Element -**

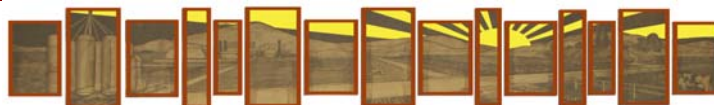
The previous Safety Element has now been integrated with public health issues that are associated with the built environment. This element now referred to as the "Health & Safety Element" includes updated information on natural and man made hazards, while also integrating public health and protection of County residents. Planning efforts on this element were joined with the County's Emergency Operations Command to develop a "Kings County Natural Hazards Mitigation Plan" and integrate the plan's recommendations into this element. Coordination with the County's Public Health Department and other regional and statewide efforts to address resident health such as obesity and diabetes through modifications in the built environment, and personal property safety through protection efforts. Many of these issues are addressed in greater detail in each community plan. New updated Naval Air Station, Lemoore operational information has also been recently released and taken into consideration in this element along with Land Use and Noise.

**6. Noise Element -**

The Noise Element has been updated with current noise surveys and update policies to address changes in mobile and stationary noise sources within the County. The only significant change in excessive noise relates to new noise contours developed by the Naval Air Station, Lemoore. In response, new policies will restrict new residential development in excessive aircraft noise corridors and require mitigation for structures in moderately excessive aircraft noise areas.

**7. Air Quality Element -**

The County's first ever Air Quality Element attempts to establish a baseline of green house gas emissions within the County, and define a coordinated link between the County's planning efforts, regional Blueprint planning efforts, and the broader statewide green house gas reduction efforts. This element is envisioned to work in conjunction with the land use, circulation and regional Blueprint transportation and urban growth direction planning to infuse sustainable community strategies, reduce urban sprawl, and reduce overall green house gas emissions. Air



Quality Element policies reinforce the County’s land use, circulation, and resource conservation policies which aim to preserve agricultural land, direct urban growth to Cities and Community Districts, and establish transportation alternatives that reduce vehicle miles traveled.

**8. Community Plans -**

The four unincorporated communities of Armona, Home Garden, Kettleman City, and Stratford make up the County’s only urbanized community areas that are served by special districts. These four community areas represent planning areas under the Armona Community Plan, Home Garden Community Plan, Kettleman City Community Plan, and Stratford Community Plan. These community plan areas will accommodate the County’s unincorporated urban growth, as growth within “City Fringe” areas continues to be directed to the respective City, and “Rural Interface” areas remain restricted with no new urban growth designations.

The primary focus of each community plan is to integrate smart growth principles into community revitalization efforts that aim to create or strengthen a centralized community core. New “Mixed Use” land use designations are integrated along with prioritization of centralized services and pedestrian connectivity in each community core. Compact residential growth and infill development are also strong themes within each plan with detailed evaluation of needed services and infrastructure improvements. Sustainable community strategies are also built in to improve community identity, increase job growth, and leverage the newly adopted Enterprise Zone that now includes all four communities. Future areas of community growth expansion are defined in each plan to ensure that compact, centralized growth occurs in a phased and balanced manner and prevents the untimely conversion of prime agricultural lands.

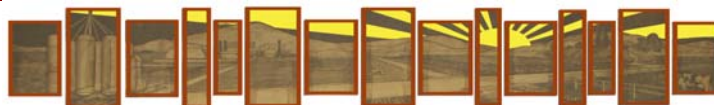
**II. PROPOSED PROJECT ALTERNATIVES**

Pursuant to State CEQA Guidelines Section 15126(f) and 15126.6, the environmental review process will include an analysis of a reasonable range of alternatives, as well as the “no project” alternative. Alternatives to the project that are expected to be analyzed in the EIR include but are not limited to:

**A. No Project Alternative:** This alternative will analyze the affects of taking no action. Under this alternative, development in the County would occur as currently allowed under the 1993 General Plan. Analysis of this alternative is based on build-out of the existing General Plan.

**B. Reduced Community Growth Alternative:** Kings County’s General Plan Update incorporated an Urban Reserve Designation (UR) that is utilized as an overlay designation, primarily in agriculturally designated areas, identified for future residential, commercial, and mixed use urban development. This alternative would remove 444 acres of land designated as Urban Reserve from the Stratford and Armona communities and would also remove phase C-1 and C-2 from development in Kettleman City on the east side of Highway 41.

**C. Unrestricted Urban Growth Alternative:** The 2035 Kings County General Plan preserves County policy to direct urban development to the cities or unincorporated communities of the County. This alternative would eliminate growth restraints and analyze the resulting affects of meeting residential and commercial market demand. This alternative would also allow rural interface development to expand, rural growth in the urban fringe would not be directed to cities for annexation, and new Urban Reserve designations outside of existing urban fringe or community districts would be created.



### III. ENVIRONMENTAL FACTORS POTENTIALLY AFFECTED

The environmental factors checked below would be potentially affected by this project, involving at least one impact that is a "Potentially Significant Impact" as indicated by the checklist on the following pages.

<input checked="" type="checkbox"/>	Aesthetics
<input checked="" type="checkbox"/>	Biological Resources
<input checked="" type="checkbox"/>	Hazards & Hazardous
<input checked="" type="checkbox"/>	Mineral Resources
<input checked="" type="checkbox"/>	Public Services
<input checked="" type="checkbox"/>	Utilities/Service Systems

<input checked="" type="checkbox"/>	Agricultural Resources
<input checked="" type="checkbox"/>	Cultural Resources
<input checked="" type="checkbox"/>	Hydrology/Water Quality
<input checked="" type="checkbox"/>	Noise
<input checked="" type="checkbox"/>	Recreation
<input checked="" type="checkbox"/>	Mandatory Findings of Significance

<input checked="" type="checkbox"/>	Air Quality
<input checked="" type="checkbox"/>	Geology/Soils
<input checked="" type="checkbox"/>	Land Use/Planning
<input checked="" type="checkbox"/>	Population/Housing
<input checked="" type="checkbox"/>	Transportation/Traffic

#### DETERMINATION:

On the basis of this initial evaluation:

X I find that the proposed project may have a significant effect on the environment, and an ENVIRONMENTAL IMPACT REPORT is required.

William R Zumwalt  
Signature

November 26, 2008  
Date

William R Zumwalt  
Printed Name

Kings County Community Development Agency  
For

#### EVALUATION OF ENVIRONMENTAL IMPACTS:

- 1) A brief explanation is required for all answers except "No Impact" answers that are adequately supported by the information sources a lead agency cites in the parentheses following each question. A "No Impact" answer is adequately supported if the referenced information sources show that the impact simply does not apply to project like the one involved (e.g., the project falls outside a fault rupture zone). A "No Impact" answer should be explained where it is based on project-specific factors as well as general standards (e.g., the project will not expose sensitive receptors to pollutants, based on a project-specific screening analysis).
- 2) All answers must take account of the whole action involved, including off-site as well as on-site, cumulative as well as project-level, indirect as well as direct, and construction as well as operational impacts.
- 3) Once the lead agency has determined that a particular physical impact may occur, then the checklist answers must indicate whether the impact is potentially significant, less than significant with mitigation, or less than significant. "Potentially Significant Impact" is appropriate if there is substantial evidence that an effect may be significant. If there are one or more "Potentially Significant Impact" entries when the determination is made, an EIR is required.
- 4) "Negative Declaration: Less Than Significant With Mitigation Incorporated" applies where incorporation of mitigation measures has reduced an effect from "Potentially Significant Impact" to a "Less Than Significant Impact." The lead agency must describe the mitigation measures, and briefly explain how they reduce the effect to a less than significant level (mitigation measures from Section XVII, "Earlier Analyses," may be cross-referenced).
- 5) Earlier analyses may be used where, pursuant to the tiering, program EIR, or other CEQA process, an effect has been adequately analyzed in an earlier EIR or negative declaration. Section 15063(c)(3)(D). In this case, a brief discussion should identify the following:
  - a) Earlier Analysis Used. Identify and state where they are available for review.
  - b) Impacts Adequately Addressed. Identify which effect from the above checklist were within the scope of and adequately analyzed in an earlier document pursuant to applicable legal standards, and state whether such effects were addressed by mitigation measures based on earlier analysis.
  - c) Mitigation Measures. For effects that are "Less than Significant with Mitigation Measures Incorporated," describe the mitigation measures which were incorporated or refined from the earlier document and the extent to which they address site-specific conditions for the project.
- 6) Lead agencies are encouraged to incorporate into the checklist references to information sources for potential impacts (e.g., general plans, zoning ordinances). Reference to a previously prepared or outside document should, where appropriate, include a reference to the page or pages where the statement is substantiated.
- 7) Supporting Information Sources: A source list should be attached, and other sources used or individuals contacted should be cited in the discussion.
- 8) This is only a suggested form, and lead agencies are free to use different formats; however, lead agencies should normally address the questions from this checklist that are relevant to a project's environmental effects in whatever format is selected.
- 9) The explanation of each issue should identify:
  - a) the significance criteria or threshold, if any, used to evaluate each question; and
  - b) the mitigation measure identified, if any, to reduce the impact to less than significance



<b>I. <u>AESTHETICS</u> - Would the project:</b>	Potentially Significant Impact	Potentially Significant Unless Mitigation Incorporation	Less Than Significant Impact	No Impact
<b>a) Have a substantial adverse effect on a scenic vista?</b>	X			
<b>b) Substantially damage scenic resources, including, but not limited to, trees rock outcroppings, and historic buildings within a state scenic highway?</b>				X
<b>c) Substantially degrade the existing visual character or quality of the site and its surroundings?</b>	X			
<b>d) Create a new source of substantial light or glare which would adversely affect day or nighttime views in the area?</b>	X			

**Substantiation for Sections I. a., b., c., and d.:**

Kings County contains many scenic views including riparian corridors, Valley Oak groves, and mountain and open space areas which may be impacted by urban development designated by the 2035 Kings County General Plan. Kings County does not contain any County or State designated scenic highways and the General Plan does not recommend adoption of new scenic highways. The General Plan could have a potentially significant impact on aesthetics unless mitigated resulting from the type or location of development on land designated for urban use. As a result, aesthetics will be addressed through preparation of the EIR.

<b>II. <u>AGRICULTURAL RESOURCES</u> - Would the project:</b>	Potentially Significant Impact	Potentially Significant Unless Mitigation Incorporation	Less Than Significant Impact	No Impact
---	--------------------------------	---	------------------------------	-----------

(Note: In determining whether impacts to agricultural resources are significant environmental effects, lead agencies may refer to the *California Agricultural Land Evaluation and Site Assessment Model* (1997) prepared by the California Dept. of Conservation as an optional model to use in assessing impacts on agriculture and farmland.)

<b>a) Convert Prime Farmland, Unique Farmland, or Farmland of Statewide Importance (Farmland), as shown on the maps prepared pursuant to the Farmland Mapping and Monitoring Program of the California Resources Agency, to non-agricultural use?</b>	X			
<b>b) Conflict with existing zoning for agricultural use, or a Williamson Act contract?</b>	X			
<b>c) Involve other changes in the existing environment which, due to their location or nature, could result in conversion of farmland to non-agricultural use?</b>	X			

**Substantiation for Sections II. a., b., and c.:**

Kings County, nestled in the southern half of the fertile San Joaquin Valley, is a predominantly agricultural based County that ranks 11<sup>th</sup> (2006) in the State for agricultural product value. During 2007, Kings County produced a gross value of \$1,761,852,000 in agricultural crops and products, which represented a 36.7% increase from the 2006 value. A vast amount of the 1,392 square miles within the County are devoted to agricultural production, with approximately 678,000 acres (90%) of the 749,000 acres of eligible agricultural land under either Williamson Act or Farmland Security Zone contracts. The project would have a potentially significant impact on these agricultural resources; therefore, the EIR will evaluate potential impacts to this resource.

<b>III. <u>AIR QUALITY</u> - Would the project:</b>	Potentially Significant Impact	Potentially Significant Unless Mitigation Incorporation	Less Than Significant Impact	No Impact
<b>a) Conflict with or obstruct implementation of the applicable</b>	X			



air quality plan?				
<b>b) Violate any air quality standard or contribute substantially to an existing or projected air quality violation?</b>	X			
<b>c) Result in cumulatively considerable net increase of any criteria pollutant for which the project region is non-attainment under an applicable federal or state ambient air quality standard (including releasing emissions which exceed quantitative thresholds for ozone precursors)?</b>	X			
<b>d) Expose sensitive receptors to substantial pollutant concentrations?</b>	X			
<b>e) Create objectionable odors affecting a substantial number of people?</b>	X			

**Substantiation for Sections III. a., b., c., d., and e.:**

Kings County is located within the San Joaquin Valley Air Basin (SJVAB) whose state air quality oversight is governed by the San Joaquin Valley Air Pollution Control District (SJVAPCD). Regional and local air quality is impacted by topography, dominant airflows, atmospheric inversions, location, and season. The combination of topography and inversion layers generally prevents dispersion of air pollutants.

Kings County exceeds the federal annual PM2.5 standard but does not exceed the federal 24 hour PM2.5 standard. Kings County occasionally exceeds the federal 8 hour ozone standard which was exceeded 20 days in 2007 at the Hanford air monitoring station. The EPA recently announced that it had finalized approval of the SJVAPCD's request for re-designation to attainment of the federal PM10 standard. No official exceedances of the PM10 standard had been recorded anywhere in the San Joaquin Valley Air Basin (SJVAB) since 2003, which includes Kings County.

Kings County's 2035 General Plan could increase pollutant emissions and greenhouse gas emissions from the types of development it would allow, including commercial, residential, industrial, and agricultural related uses, as well as from the amount of traffic that would be expected to occur from build-out of the General Plan. The EIR will evaluate the potentially significant impacts resulting from the General Plan implementation.

<b>IV. BIOLOGICAL RESOURCES - Would the project:</b>	Potentially Significant Impact	Potentially Significant Unless Mitigation Incorporation	Less Than Significant Impact	No Impact
<b>a) Have a substantial adverse effect, either directly or through habitat modifications, on any species identified as a candidate, sensitive, or special status species in local or regional plans, policies, or regulations or by the California Dept. of Fish &amp; Game or U.S. Fish &amp; Wildlife Service?</b>	X			
<b>b) Have a substantial adverse effect on any riparian habitat or other sensitive natural community identified in local or regional plans, policies, or regulations or by the California Dept. of Fish &amp; Game or US Fish &amp; Wildlife Service?</b>	X			
<b>c) Have a substantial adverse effect on federally protected Wetlands as defined by Section 404 of the Clean Water Act (including, but not limited to, marsh, vernal pool, coastal, etc.) through direct removal, filling, hydrological interruption, or other means?</b>	X			
<b>d) Interfere substantially with the movement of any native resident or migratory fish or wildlife species or with established native resident or migratory wildlife corridors, or impede the use of native wildlife nursery sites?</b>	X			
<b>e) Conflict with any local policies or ordinances protecting</b>	X			





biological resources, such as a tree preservation policy or ordinance?				
f) Conflict with the provisions of an adopted Habitat Conservation Plan, Natural Community Conservation Plan, or other approved local, regional, or state habitat Conservation plan?	X			

**Substantiation for Sections IV. a., b., c., d., e., and f.:**

Kings County contains a wide variety of native plant communities, sensitive habitats, and other important wildlife habitats due to the size of the county and its diverse geographic, topographic, and hydrological features. The county encompasses riparian habitat (along the Kings River, Cross Creek, the Kern River channel, and several lesser streams), freshwater marsh, seasonal wetlands, and periodically flooded areas at the southern end of the Tulare Lake Basin, grasslands in the Kettleman Hills and along Cross Creek, oak and conifer forests in the Kreyenhagen Hills, alkali scrub near Guernsey and Lemoore, and desert scrub on the margins of the Tulare Lake Basin and in the hills west of the California Aqueduct. Kings County contains eighteen (18) threatened or endangered wildlife species and two plant species that have been recorded in the county and may be found in the California Natural Diversity Database. These species are listed below.

**Mammals**

Fresno Kangaroo Rat, Giant Kangaroo Rat, Nelson’s Antelope Squirrel, San Joaquin Kit Fox, Tipton Kangaroo Rat

**Birds**

California Condor\*, Golden Eagle, Swainson’s Hawk, Western Snowy Plover

**Fish**

Delta Smelt\*

**Reptiles**

Blunt-nosed leopard Lizard, Giant Garter Snake\*

**Amphibians**

California Tiger Salamander, California Red-legged Frog

**Arthropods**

Conservancy Fairy Shrimp\*, Valley Elderberry Longhorn Beetle, Vernal Pool Fairy Shrimp, Vernal Pool Tadpole Shrimp

**Plants**

California Jewel-flower, san Joaquin Woollythreads

\*-These species are noted by the USFWS on their sensitive species lists, but they do not occur in Kings County.

A Habitat Conservation Plan for Kings County or this region does not exist; therefore, the EIR will utilize biological resources information found in the Biological Resources Survey prepared as a background study for the Kings County 2035 General Plan’s Resource Conservation Element. Potentially significant impacts may occur through implementation of the General Plan which will require additional analysis in the EIR.

<b>V. <u>CULTURAL RESOURCES - Would the project:</u></b>	Potentially Significant Impact	Potentially Significant Unless Mitigation Incorporation	Less Than Significant Impact	No Impact
a) Cause a substantial adverse change in the significance of a historical resource as defined in Section 15064.5?	X			
b) Cause a substantial adverse change in the significance of an archaeological resource pursuant to Section 15064.5?	X			
c) Directly or indirectly destroy a unique paleontological resource or site or unique geologic feature?	X			
d) Disturb any human remains, including those interred outside of formal cemeteries?	X			



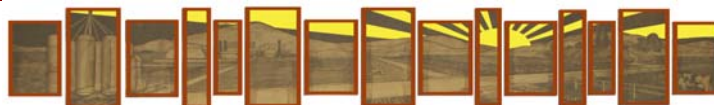
**Substantiation for Sections V. a., b., c., and d.:**

Kings County is the home of the Tachi tribe of the Yokuts who lived north of Tulare Lake and westward to the hills near Coalinga. The lake region contains numerous archaeological artifacts along the Tulare lakeshores margins and a significant archaeological site called the Witt site in southern Kings County (near Dudley Ridge). Numerous other recorded cultural resource sites have been identified in Kings County in the area of Stratford, the area south and west of Lemoore, and in the area surrounding Alpaugh in southeastern Kings County. Kings County also contains four sites that are listed on the National Register of Historic Places, and three additional sites that have been designated as California Historical Landmarks. The sites include a Taoist Temple, County Courthouse, Carnegie Library, and the Witt archaeological site. The three California Historical Landmarks include the Mussel Slough Tragedy site south of Hardwick; the Kingston Town site north of Hardwick; and the El Adobe de los Robles Rancho west of Lemoore. Thirteen historic sites of local importance are also found in Kings County. The type and location of development allowed under the Kings County 2035 General Plan could have a potentially significant impact on these cultural resources unless the impacts are mitigated. As a result, these topics will be addressed in the EIR.

<b>VI. <u>GEOLOGY AND SOILS</u> - Would the project:</b>	Potentially Significant Impact	Potentially Significant Unless Mitigation Incorporation	Less Than Significant Impact	No Impact
<b>a) Expose people or structures to potential substantial adverse effects, including the risk of loss, injury, or death involving:</b>				
<b>i) Rupture of a known earthquake fault, as delineated on the most recent Alquist-Priolo Earthquake Fault Zoning Map issued by the State Geologist for the area or based on other substantial evidence of a known fault? (Refer to Division of Mines &amp; Geology Special Publication 42.)</b>	X			
<b>ii) Strong seismic ground shaking?</b>	X			
<b>iii) Seismic-related ground failure, including liquefaction?</b>	X			
<b>iv) Landslides?</b>	X			
<b>b) Result in substantial soil erosion or the loss of topsoil?</b>	X			
<b>c) Be located on a geologic unit or soil that is unstable, or that would become unstable as a result of the project, and potentially result in on- or off-site landslide, lateral spreading, subsidence, liquefaction or collapse?</b>	X			
<b>d) Be located on expansive soil, as defined in Table 18-1-B of the Uniform Building Code (1997), creating substantial risks to life or property?</b>	X			
<b>e) Have soils incapable of adequately supporting the use of septic tanks or alternative waste water disposal systems where sewers are not available for the disposal of waste water?</b>	X			

**Substantiation for Sections VI. a., b., c., d., and e.:**

Kings County is located on a broad alluvial plain lying between the Sierra Nevada foothills and the Coastal Range. The County contains four seismic zones in the valley referenced as V<sub>1</sub>, V<sub>2</sub>, V<sub>3</sub>, V<sub>4</sub> and two seismic zones in the Coastal Range referenced as C<sub>1</sub>, and C<sub>2</sub>. Amplification of shaking is reduced by the damping effect of the thick sedimentary section located throughout most of the County, but the Counties close proximity to the San Andreas fault zone results in the expectation of moderately high shaking characteristics. Kings County does not contain a major fault system, although, the San Andreas Fault is located approximately four miles west of the Kings County line and poses the greatest potential for geologic disaster in Kings County. Moderate to moderately high ground shaking has occurred from earthquakes, primarily the San Andreas Fault, and will continue to occur periodically in the County. Portions of Kings County are also potentially subject to landslides, subsidence, liquefaction, and expansive soils. The Kings County 2035 General Plan will require all new development to comply with the current



California Building Code Standards for earthquake safety. However, due to the potentially significant impacts related to geology and soils, this topic will be addressed in the EIR.

<b>VII. HAZARDS AND HAZARDOUS MATERIALS - Would the project:</b>	Potentially Significant Impact	Potentially Significant Unless Mitigation Incorporation	Less Than Significant Impact	No Impact
<b>a)</b> Create a significant hazard to the public or the environment through the routine transport, use, or disposal of hazardous materials?	X			
<b>b)</b> Create a significant hazard to the public or the environment through reasonably foreseeable upset and accident conditions involving the release of hazardous materials into the environment?	X			
<b>c)</b> Emit hazardous emissions or handle hazardous or acutely hazardous materials, substances, or waste within one-quarter mile of an existing or proposed school?	X			
<b>d)</b> Be located on a site which is included on a list of hazardous materials sites compiled pursuant to Government Code Section 65962.5 and, as a result, would it create a significant hazard to the public or the environment?	X			
<b>e)</b> For a project located within an airport land use plan or, where such a plan has not been adopted, within two miles of a public airport or public use airport, would the project result in a safety hazard for people residing or working in the project area?	X			
<b>f)</b> For a project within the vicinity of a private airstrip, would the project result in a safety hazard for people residing or working in the project area?	X			
<b>g)</b> Impair implementation of or physically interfere with an adopted emergency response plan or emergency evacuation plan?	X			
<b>h)</b> Expose people or structures to a significant risk or loss injury or death involving wildland fires, including where, wildlands area adjacent to urbanized areas or where residences are intermixed with wildlands?	X			

**Substantiation for Sections VII. a., b., c., d., e., f., g., and h.:**

The Kings County 2035 General Plan implementation is not anticipated to create significant environmental impacts related to the release of or exposure to hazardous materials or waste. Transportation of hazardous materials is highly regulated by local, state, and federal regulations and general plan implementation will not alter or affect those regulations. The EIR will analyze potential impacts related to school sites, and will also focus on current special sites of concern as determined through findings based on review of regulatory databases and regulatory agency files. Kings County contains one municipal airport, one public airport, one military installation, and 19 personal or corporate airstrips used primarily in the agricultural industry. The EIR will evaluate the safety hazards related to land use designations around airports. Wildland fires are a minimal risk in the valley portions of Kings County where a majority of the land is under intensive agricultural use. The Coalinga Hills in the western portion of the County primarily represents the only area where wildland fire may cause a special hazard situation. Due to the lack of timber fuel and the abundance of grasses and invasive weeds in the Kettleman Hills, wildland fire hazards are common but with minimal destruction to property. The EIR will address wildland fire potential.



<b>VIII. HYDROLOGY AND WATER QUALITY - Would the project:</b>	Potentially Significant Impact	Potentially Significant Unless Mitigation Incorporation	Less Than Significant Impact	No Impact
<b>a)</b> Violate any water quality standards or waste discharge requirements?	X			
<b>b)</b> Substantially deplete groundwater supplies or interfere substantially with groundwater recharge such that there would be a net deficit in aquifer volume or a lowering of the local groundwater table level (e.g., the production rate of pre-existing nearby wells would drop to a level which would not support existing land uses or planned uses for which permits have been granted.)?	X			
<b>c)</b> Substantially alter the existing drainage pattern of the site or area, including through the alteration of the course of a stream or river, in a manner which would result in substantial erosion or siltation on- or off-site?	X			
<b>d)</b> Substantially alter the existing drainage pattern of the site or area, including through the alteration of the course of a stream or river, or substantially increase the rate or amount of surface runoff in a manner which would result in flooding on- or off-site?	X			
<b>e)</b> Create or contribute runoff water which would exceed the capacity of existing or planned stormwater drainage systems or provide substantial additional sources of polluted runoff?	X			
<b>f)</b> Otherwise substantially degrade water quality?	X			
<b>g)</b> Place housing within a 100-year flood hazard area as mapped on a federal Flood Hazard Boundary or Flood Insurance Rate Map or other flood hazard delineation map?	X			
<b>h)</b> Place housing within a 100-year flood hazard area structures which would impede or redirect flood flows?	X			
<b>i)</b> Expose people or structures to a significant risk of loss, injury or death involving flooding, including flooding as a result of the failure of a levee or dam?	X			
<b>j)</b> Inundation by seiche, tsunami, or mudflow?	X			

**Substantiation for Sections VIII. a., b., c., d., e., f., g., h., i., and j.:**

The Federal Emergency Management Agency (FEMA) has updated the County's Flood Insurance Rate Maps with a new 2008 Digital Flood Insurance Rate Map (DFIRM) that defines areas subject to 1% chance occurrence (100 year) and 500 year floods. Kings Counties identified high risk 100-year flood zones were increased by approximately 148,000 acres. A vast majority of the land designated as the 100-year flood zone is located in the unincorporated land of the County and was not designated for urban use in the Kings County 2035 General Plan, although the potential still exists for the plan to expose people or structures to flooding, alter the amount and quality of groundwater supplies, create changes to waterway drainage patterns, or increase impervious surfaces. The EIR will analyze these impacts in addition to inundation by seiche, tsunami, or mudflow potential.

<b>IX. LAND USE AND PLANNING - Would the project:</b>	Potentially Significant Impact	Potentially Significant Unless Mitigation Incorporation	Less Than Significant Impact	No Impact
<b>a)</b> Physically divide an established community?	X			



<b>b) Conflict with any applicable land use plan, policy, or regulation of an agency with jurisdiction over the project (including, but not limited to the general plan, specific plan, local coastal program, or zoning ordinance) adopted for the purpose of avoiding or mitigating an environmental effect?</b>	X			
<b>c) Conflict with any applicable habitat conservation plan or natural community conservation plan?</b>	X			

**Substantiation for Sections IX. a., b., and c.:**

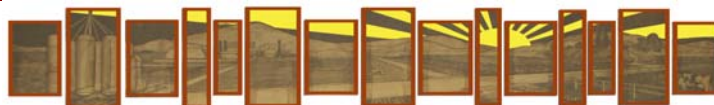
The Kings County 2035 General Plan contains individual community plans for the four unincorporated communities. These community plans are designed to enhance the community's sustainability and are anticipated to protect the existing communities. The Kings County 2035 General Plan is also expected to be consistent with the San Joaquin eight County Regional Blueprint, and the Joint Land Use Document prepared by the County, Naval Air Station Lemoore, and the City of Lemoore. The EIR will evaluate the anticipated impacts to land use and planning.

<b>X. MINERAL RESOURCES - Would the project:</b>	Potentially Significant Impact	Potentially Significant Unless Mitigation Incorporation	Less Than Significant Impact	No Impact
<b>a) Result in the loss of availability of a known mineral resource that would be of value to the region and the residents of the state?</b>	X			
<b>b) Result in the loss of availability of a locally-important mineral resource recovery site delineated on a local general plan, specific plan or other land use plan?</b>	X			

**Substantiation for Sections X. a. and b.:**

Currently Kings County is monitoring three Surface Mining and Reclamation Act (SMARA) permits although all three mining operations are not active. Two agricultural reclamation projects that lowered the elevation of fields have been completed. The fields are under Williamson Act contracts and are now being monitored to ensure proper compliance of the contract is achieved. No further mining activities will occur on either permitted project. The third SMARA permit includes a gravel mining project that would have provided gravel to Cal-Trans Highway 41 expansion project. However, the mine has not been developed and future mining activities have been indefinitely suspended. Implementation of the Kings County 2035 General Plan does not anticipate impacts to existing mineral resources. The EIR will still analyze potential impacts to mineral resources.

<b>XI. NOISE - Would the project result in:</b>	Potentially Significant Impact	Potentially Significant Unless Mitigation Incorporation	Less Than Significant Impact	No Impact
<b>a) Exposure of persons to or generation of noise levels in excess of standards established in the local general plan or noise ordinance, or applicable standards of other agencies?</b>	X			
<b>b) Exposure of persons to or generations of excessive ground-borne vibration or ground-borne noise levels?</b>	X			
<b>c) A substantial permanent increase in ambient noise levels in the project vicinity above levels existing without the project?</b>	X			
<b>d) A substantial temporary or periodic increase in ambient noise levels in the project vicinity above levels existing without the project?</b>	X			
<b>e) For a project located within an airport land use plan or,</b>	X			



where such a plan has not been adopted, within two miles of a public airport or public use airport, would the project expose people residing or working in the project area to excessive noise levels?				
<b>f)</b> For a project within the vicinity of a private airstrip, would the project expose people residing or working in the project area to excessive noise levels?	X			

**Substantiation for Sections XI. a., b., c., d., e., and f.:**

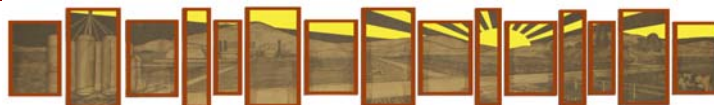
The Kings County 2035 General Plan contains policies that will minimize noise impacts within the County. Implementation of the General Plan and the associated development will most likely increase noise generating uses and vehicular traffic in addition to possibly locating noise sensitive land uses near an incompatible noise generating use. The EIR will analyze the compatibility of future land uses including land uses in the vicinity of airstrips.

<b>XII. POPULATION AND HOUSING - Would the project:</b>	Potentially Significant Impact	Potentially Significant Unless Mitigation Incorporation	Less Than Significant Impact	No Impact
<b>a)</b> Induce substantial population growth in an area, either directly (for example, by processing new homes and businesses) or indirectly (for example, through extension of roads or other infrastructure)?	X			
<b>b)</b> Displace substantial numbers of existing housing necessitating the construction of replacement housing elsewhere?	X			
<b>c)</b> Displace substantial numbers of people, necessitating the construction of replacement housing elsewhere?	X			

**Substantiation for Sections XII. a., b., and c.:**

The Kings County 2035 General Plan seeks to maintain sustainable communities within the County. This approach includes ensuring appropriate residential land use designations are apportioned, throughout the four unincorporated communities, to achieve the Regional Housing Needs Allocation dwelling unit requirement. The General Plan has identified the population and housing growth that could be realized if build-out is achieved. The EIR will analyze the potential impacts for their environmental significance.

<b>XIII. PUBLIC SERVICES</b>	Potentially Significant Impact	Potentially Significant Unless Mitigation Incorporation	Less Than Significant Impact	No Impact
<b>a)</b> Would the project result in substantial adverse physical impacts associated with the provision of new or physically altered governmental facilities, need for new or physically altered governmental facilities, the construction of which could cause significant environmental impacts, in order to maintain acceptable service ratios, response times or other performance objectives for any of the public services:				
i) Fire protection?	X			
ii) Police protection?	X			
iii) Schools?	X			
iv) Parks?	X			
v) Other public facilities?	X			



**Substantiation for Sections XIII . a.:**

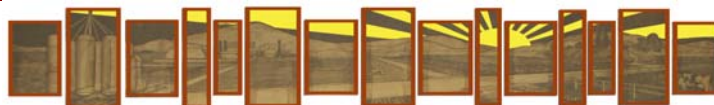
Implementation of the Kings County 2035 General Plan will most likely result in potentially significant impacts to services providing for fire protection, police protection, schools, and parks. Service demands from most public facilities and services will most likely increase. The EIR will identify the existing public facilities and services and will determine what impacts will be associated with General Plan implementation.

<b>XIV. RECREATION</b>	Potentially Significant Impact	Potentially Significant Unless Mitigation Incorporation	Less Than Significant Impact	No Impact
<b>a)</b> Would the project increase the use of existing neighborhood and regional parks or other recreational facilities such that substantial physical deterioration of the facility would occur or be accelerated?	X			
<b>b)</b> Does the project include recreational facilities or require the construction or expansion of recreational facilities which might have been an adverse physical effect on the environment?	X			

**Substantiation for Sections XIV . a. and b.:**

The County owns and maintains three parks for public use which are located in rural portions of the County. The Kings County 2035 General Plan implementation will most likely increase public demand for parks and recreation through adoption of additional residential land use designations that may increase the population. In addition, population growth in the four unincorporated communities will result in demand for additional park facilities. Community Service Districts currently own and maintain all park facilities in the communities. The General Plan contains policies that will generate funding for the construction and maintenance of new park facilities in those communities. The EIR will include an inventory of existing park facilities and open space resources and provide an analysis to determine what impacts will occur to those resources.

<b>XV. TRANSPORTATION/TRAFFIC - Would the project:</b>	Potentially Significant Impact	Potentially Significant Unless Mitigation Incorporation	Less Than Significant Impact	No Impact
<b>a)</b> Cause an increase in traffic which is substantial in relation to the existing traffic load and capacity of the street system (i.e., result in a substantial increase in either the number of vehicle trips, the volume to capacity ratio on roads, or congestion at intersections.)?	X			
<b>b)</b> Exceed, either individually or cumulatively, a level of service standard established by the county congestion management agency for designated roads or highways?	X			
<b>c)</b> Result in a change in air traffic patterns, including either an increase in traffic levels or a change in location that results in substantial safety risks?			X	
<b>d)</b> Substantially increase hazards due to a design feature (e.g., sharp curves or dangerous intersections) or incompatible uses (e.g., farm equipment)?	X			
<b>e)</b> Result in inadequate emergency access?	X			
<b>f)</b> Result in inadequate parking capacity?	X			
<b>g)</b> Conflict with adopted policies, plans, or programs supporting alternative transportation (e.g., bus turnouts, bicycle racks)?			X	



**Substantiation for Sections XV. a., b., c., d., e., f., and g.:**

Proposed land use changes in the Kings County 2035 General Plan will create additional vehicle trips resulting in increased circulation demands. To accommodate future growth the General Plan has developed a functional street and highway system by evaluating the Level of Service (LOS) for most County owned streets and highways. LOS standards vary throughout the county and the four incorporated cities. The General Plan LOS threshold has identified that the “minimum” LOS standard within the county shall be no lower than LOS “D”. The General Plan has also determined which streets and highways, or sections thereof, will fall below the accepted LOS threshold following implementation of the General Plan. The EIR will analyze impacts associated with increased circulation demands. The General Plan also contains numerous policies supporting alternative transportation programs within Kings County such as the Kings Area Rural Transit System, Agricultural Industry Transportation System, community car pooling, and the Kings County Regional Bike Plan.

<b>XVI. UTILITIES AND SERVICE SYSTEMS - Would the project:</b>	Potentially Significant Impact	Potentially Significant Unless Mitigation Incorporation	Less Than Significant Impact	No Impact
<b>a)</b> Exceed wastewater treatment requirements of the applicable Regional Water Quality Control Board?	X			
<b>b)</b> Require or result in the construction of new water or wastewater treatment facilities or expansion of existing facilities, the construction of which could cause significant environmental effects?	X			
<b>c)</b> Require or result in the construction of new storm water drainage facilities or expansion of existing facilities, the construction of which could cause significant environmental effects?	X			
<b>d)</b> Have sufficient water supplies available to serve the project from existing entitlements and resources, or are new or expanded entitlements needed?	X			
<b>e)</b> Result in a determination by the wastewater treatment provider which serves or may serve the project that it has adequate capacity to serve the project’s projected demand in addition to the provider’s existing commitments?	X			
<b>f)</b> Be served by a landfill with sufficient permitted capacity to accommodate the project’s solid waste disposal needs?	X			
<b>g)</b> Comply with federal, state, and local statutes and regulations related to solid waste?	X			

**Substantiation for Sections XVI. a., b., c., d., e., f., and g.:**

Kings County does not provide utility service to residents or businesses within Kings County, and the County does not own any utility service systems. All utility services within the four unincorporated communities are provided by either a community service district or a public utility district. Some of these districts have reached their service capacity in either potable water or wastewater and cannot provide service to new development until additional capacity is achieved. Policy direction in the General Plan require additional infrastructure for increased service capacity prior to development authorization. The EIR will analyze impacts to utility service systems in addition to analyzing the service capacity of the County’s two permitted landfills to determine if the facilities contain adequate capacity to support the General Plan implementation.

<b>XVII. MANDATORY FINDINGS OF SIGNIFICANCE</b>	Potentially Significant Impact	Potentially Significant Unless Mitigation Incorporation	Less Than Significant Impact	No Impact





<p><b>a)</b> Does the project have the potential to degrade the quality of the environment, substantially reduce the habitat of a fish or wildlife species, cause a fish or wildlife population to drop below self-sustaining levels, threaten to eliminate a plant or animal community, reduce the number or restrict the range of a rare or endangered plant or animal or eliminate important examples of the major periods of California history or pre-history?</p>	X			
<p><b>b)</b> Does the project have impacts that are individually limited, but cumulatively considerable? (“Cumulatively considerable” means that the incremental effects of a project are considerable when viewed in connection with the effects of past projects, the effects of other current projects, and the effects of probable future projects.)?</p>	X			
<p><b>c)</b> Does the project have environmental effects which will cause substantial adverse effects on human beings, either directly or indirectly?</p>	X			

**Substantiation for Sections XVII. a., b., and c.:**

The Kings County General Plan has the potential to significantly impact all sixteen impact areas identified under CEQA and may provide significant cumulative impacts on biological resources and human beings. The EIR will address these issues and any feasible mitigation measures will be identified to avoid and/or reduce any significant impacts.

