

**SB-1 FUNDED KINGS COUNTY ROADWAY IMPROVEMENT PROJECT**

#	ROAD SEGMENT	TREATMENT	LOCATION	W=FT	MILES	TON
1	Eastview Drive	Hot Mix Asphalt Concrete	Shaw Pl. to 6 <sup>th</sup> Pl.	36	0.18	304
2	Haven Lane	Hot Mix Asphalt Concrete	Margo Ln. to Chris Ln.	37	0.19	330
3	Libbie Lane	Hot Mix Asphalt Concrete	Margo Ln. to 10 <sup>th</sup> Ave.	37	0.23	399
4	Heath Street	Hot Mix Asphalt Concrete	Chris Ln. to Margo Ln.	37	0.19	330
5	Margo Lane	Hot Mix Asphalt Concrete	Haven Ln. to Heath St.	37	0.10	173
6	Elvira Street	Hot Mix Asphalt Concrete	Heath St. to Houston Ave.	37	0.06	104
7	Chris Lane	Hot Mix Asphalt Concrete	Haven Ln. to Heath St.	37	0.10	173
<b>Total Hot Mix Asphalt Concrete Overlay</b>					<b>1.05</b>	<b>1,813</b>

▲	ROAD SEGMENT	TREATMENT	LOCATION	W=FT	MILES	SY
1	Mary Street	Cape Seal	Cameron St. to Grangeville Blvd.	25	0.40	5,867
2	Buelah Street	Cape Seal	Cameron St. to Grangeville Blvd.	36	0.40	8,448
3	Jessie Avenue	Cape Seal	Lacey Blvd. to Whitney Dr.	31	0.22	4,001
4	Hardcastle Avenue	Cape Seal	Carey Ave. to Crass Ave.	24	0.17	2,394
5	Crass Avenue	Cape Seal	Hardcastle Ave. to 10 <sup>th</sup> Ave.	33	0.08	1,549
6	12 <sup>th</sup> Avenue	Cape Seal	Fargo Ave. to Excelsior Ave.	32	3.00	56,320
7	Kanawyer Street	Cape Seal	14 <sup>th</sup> Ave. to South End	27	0.12	1,901
8	14 <sup>th</sup> Avenue	Cape Seal	Grangeville Blvd. to Last Chance	49	0.50	14,373
9	Shaw Place	Cape Seal	Garden Dr. to Home Ave.	36	0.14	2,957
10	Garden Drive	Cape Seal	Shaw Pl. to 6 <sup>th</sup> Pl.	36	0.14	2,957
11	6 <sup>th</sup> Place	Cape Seal	Home Ave. to Garden Ave.	36	0.14	2,957
12	Poplar Drive	Cape Seal	Indiana Ave. to West End	22	0.30	3,872
13	Ironwood Drive	Cape Seal	Iowa Ave. to Indiana Ave.	22	0.18	2,323
14	Indiana Avenue	Cape Seal	18 <sup>th</sup> Ave. to West End	22	0.24	3,098
15	C Street	Cape Seal	Hanford-Armona Rd. to Walker St.	38	0.14	3,121
16	Walker Street	Cape Seal	C St. to 14 <sup>th</sup> Ave.	36	0.11	2,323
17	Pimo Street	Cape Seal	C St. to Dan Dr.	40	0.23	5,397
18	Hood Avenue	Cape Seal	14 <sup>th</sup> Ave. to East End	34	0.21	4,189
<b>Total Cape Seal</b>					<b>6.72</b>	<b>128,046</b>

◆	ROAD SEGMENT	TREATMENT	LOCATION	W=FT	MILES	SY
1	Railroad Street	Microsurfacing Seal	SR41 to 6 <sup>th</sup> St.	36	0.50	10,560
2	Cross Street	Microsurfacing Seal	Lansing Ave. to 1 <sup>st</sup> St.	36	0.25	5,280
3	Lansing Avenue	Microsurfacing Seal	SR41 to Stratford Canal	32	0.18	3,379
4	Prospect Ave	Microsurfacing Seal	Railroad St. to Cross St.	38	0.15	3,344
5	1 <sup>st</sup> Street	Microsurfacing Seal	Empire St. to Railroad St.	32	0.21	3,942
6	13 <sup>1/2</sup> Avenue	Microsurfacing Seal	Grangeville Blvd. to South End	37	0.25	5,427
7	Alice Springs Way	Microsurfacing Seal	Frontier St. to East End	26	0.11	1,678
8	Frontier Street	Microsurfacing Seal	Grangeville Blvd. to North End	26	0.30	4,576
9	Elm Street	Microsurfacing Seal	10 <sup>th</sup> Ave. to Gladys Wy.	35	0.22	4,517
10	Myrtle Street	Microsurfacing Seal	10 <sup>th</sup> Ave. to Whitney Dr.	36	0.28	5,914
11	Ivy Street	Microsurfacing Seal	10 <sup>th</sup> Ave. to East End	32	0.23	4,318
12	Forrest Way	Microsurfacing Seal	Ivy St. to Myrtle St.	39	0.06	1,373
13	Gladys Way	Microsurfacing Seal	Myrtle St. to Florinda St.	47	0.12	3,309

**SB-1 FUNDED KINGS COUNTY ROADWAY IMPROVEMENT PROJECT**

#	ROAD SEGMENT	TREATMENT	LOCATION	W=FT	MILES	SY
14	Whitney Drive	Microsurfacing Seal	Jessie Ave. to City of Hanford	27	0.20	3,168
15	Kruger Street	Microsurfacing Seal	Jessie Ave. to 10 <sup>th</sup> Ave.	36	0.14	2,957
16	Miller Street	Microsurfacing Seal	Kruger Ave. to Lacey Blvd.	31	0.16	2,910
17	Carey Avenue	Microsurfacing Seal	Hardcastle Ave. to 10 <sup>th</sup> Ave.	27	0.08	1,267
18	Home Avenue	Microsurfacing Seal	4 <sup>th</sup> Pl. to 6 <sup>th</sup> Pl.	32	0.16	3,004
19	Hamill Street	Microsurfacing Seal	Front St. to Peach St.	33	0.15	2,904
20	Peach Street	Microsurfacing Seal	Hamill St. to Jensen St.	36	0.05	1,056
21	Jensen Street	Microsurfacing Seal	Front St. to Barbara Dr.	33	0.22	4,259
22	Cedar Street	Microsurfacing Seal	Locust St. to Front St.	30	0.16	2,816
23	Arbor Street	Microsurfacing Seal	Locust St. to South End	37	0.11	2,388
24	Barbara Drive	Microsurfacing Seal	Jensen St. to West End	34	0.04	798
25	Highway Avenue	Microsurfacing Seal	14 <sup>th</sup> Ave. to Balm of Gilead Ave.	33	0.13	2,517
26	Jackson Street	Microsurfacing Seal	Highway Ave. to Railroad Ave.	30	0.11	1,936
27	Railroad Avenue	Microsurfacing Seal	Highway Ave. to Front St.	30	0.25	4,400
28	Locust Street	Microsurfacing Seal	14 <sup>th</sup> Ave. to Ambrose St.	32	0.07	1,314
29	Walnut Street	Microsurfacing Seal	14 <sup>th</sup> Ave. to Randall St.	26	0.24	3,661
30	Randall Street	Microsurfacing Seal	Walnut St. to Hanford-Armona Rd.	28	0.05	821
31	Oak Avenue	Microsurfacing Seal	6 <sup>th</sup> St. to Hanford-Armona Rd.	21	0.16	1,971
32	6 <sup>th</sup> Street	Microsurfacing Seal	14 <sup>th</sup> Ave. to D St.	33	0.18	3,485
33	D Street	Microsurfacing Seal	6 <sup>th</sup> St. to Hanford-Armona Rd.	26	0.12	1,830
34	C Street	Microsurfacing Seal	6 <sup>th</sup> St. to Hanford-Armona Rd.	36	0.10	2,112
35	Palm Circle	Microsurfacing Seal	Vista Dr. to North End	36	0.04	845
36	Fern Circle	Microsurfacing Seal	Vista Dr. to North End	35	0.02	411
37	Balm of Gilead	Microsurfacing Seal	Highway Ave. to Railroad Ave.	27	0.17	2,693
38	Locust Street	Microsurfacing Seal	14 <sup>th</sup> Ave. to Jensen St.	40	0.15	3,520
39	Locust Street	Microsurfacing Seal	Jensen St. to Arbor Dr.	28	0.15	2,464
40	Sierra Drive	Microsurfacing Seal	Lacey Blvd. to Coast Ave.	32	0.13	2,441
41	Coast Avenue	Microsurfacing Seal	Sierra Dr. to Lacey Blvd.	32	0.17	3,191
42	8 <sup>3/4</sup> Avenue	Microsurfacing Seal	Lacey Blvd. to North End	23	0.20	2,699
43	8 <sup>3/4</sup> Avenue	Microsurfacing Seal	Lacey Blvd. to South End	28	0.22	3,614
44	County Lane	Microsurfacing Seal	Lacey Blvd. to North End	25	0.08	1,173
45	Vista Lane	Microsurfacing Seal	Lacey Blvd. to North End	16	0.17	1,596
<b>Total Microsurfacing Seal</b>					<b>7.24</b>	<b>133,836</b>

#	ROAD SEGMENT	TREATMENT	LOCATION	W=FT	MILES	SY
1	Carolyn Avenue	Chip Seal	Lacey Blvd. to Railroad tracks	22	0.14	1,807
2	Carolyn Avenue	Chip Seal	Lacey Blvd. to 8 <sup>3/4</sup> Ave.	36	0.35	7,392
3	Martin Road	Chip Seal	Carolyn Ave. to Eddy St.	36	0.11	2,323
4	Eddy Street	Chip Seal	Martin Rd. to David St.	32	0.24	4,506
5	David Street	Chip Seal	Eddy St. to Curtis St.	36	0.11	2,323
6	Curtis Street	Chip Seal	David St. to El Toro Wy.	38	0.13	2,898
7	El Toro Way	Chip Seal	Curtis St. to Carolyn Ave.	36	0.13	2,746
8	El Toro Way	Chip Seal	Carolyn Ave. to North End	32	0.04	751
9	La Vaca Way	Chip Seal	Carolyn Ave. to East End	32	0.08	1,502

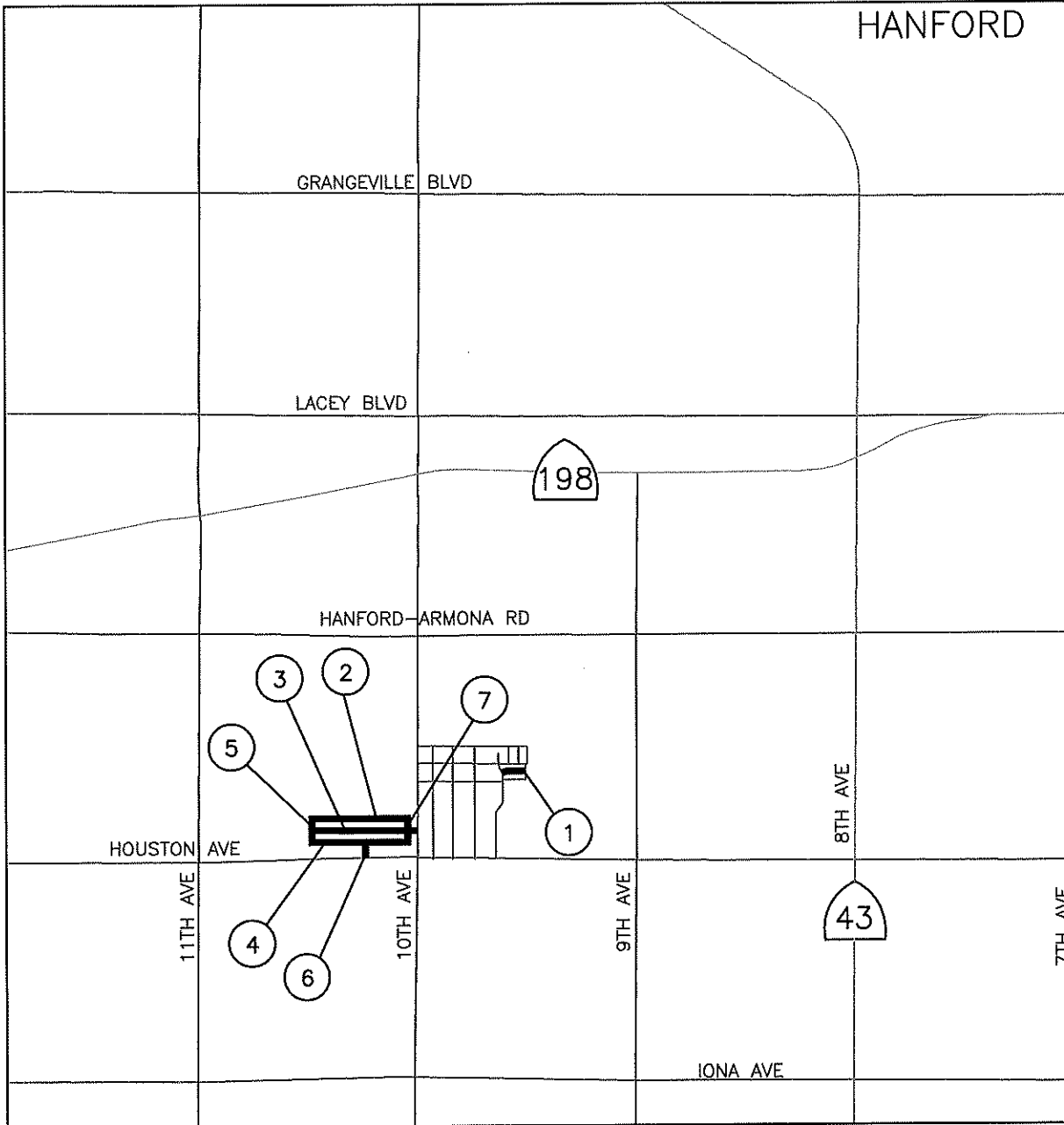
**SB-1 FUNDED KINGS COUNTY ROADWAY IMPROVEMENT PROJECT**

<b>#</b>	<b>ROAD SEGMENT</b>	<b>TREATMENT</b>	<b>LOCATION</b>	<b>W=FT</b>	<b>MILES</b>	<b>SY</b>
10	Ada Street	Chip Seal	14 <sup>th</sup> Ave. to Oak Ave.	32	0.47	8,823
11	Oak Avenue	Chip Seal	Hood Ave. to Hume Ave.	27	0.32	5,069
12	Lyn Street	Chip Seal	Oak Ave. to Ada St.	32	0.43	8,073
13	Lyn Street	Chip Seal	Ada St. to South End	32	0.05	939
14	Alvin Street	Chip Seal	Lyn St. to Ada St.	32	0.12	2,253
15	Allen Way	Chip Seal	Alvin St. to Flora Wy.	32	0.14	2,628
16	Flora Way	Chip Seal	Allen Wy. to Ada St.	32	0.09	1,690
17	Cristie Circle	Chip Seal	Ada St. to North End	32	0.04	751

**Total Chip Seal                    2.99    56,473**

**Total FY17/18 SB-1 Roadway Improvements                    18.00    miles**

# HOT MIX ASPHALT CONCRETE OVERLAY LOCATIONS



(NO.)	ROAD	LOCATION	LENGTH (MILE)
1	EASTVIEW AVE	SHAW PL TO 6th PL	0.18
2	HAVEN LN	MARGO LN TO CHRIS LN	0.19
3	LIBBIE LN	MARGO LN TO 10th AVE	0.23
4	HEATH ST	CHRIS LN TO MARGO LN	0.19
5	MARGO LN	HAVEN LN TO HEATH ST	0.10
6	ELVIRA ST	HEATH ST TO HOUSTON AVE	0.08
7	CHRIS LN	HAVEN LN TO HEATH ST	0.10
TOTAL			1.05

APPROVED BY:  
**DOMINIC TYRURSKI, P.E.**

DRAWN BY: DT

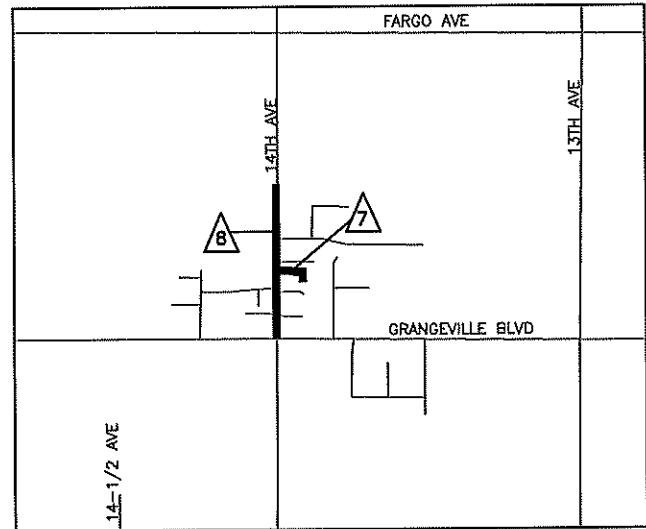
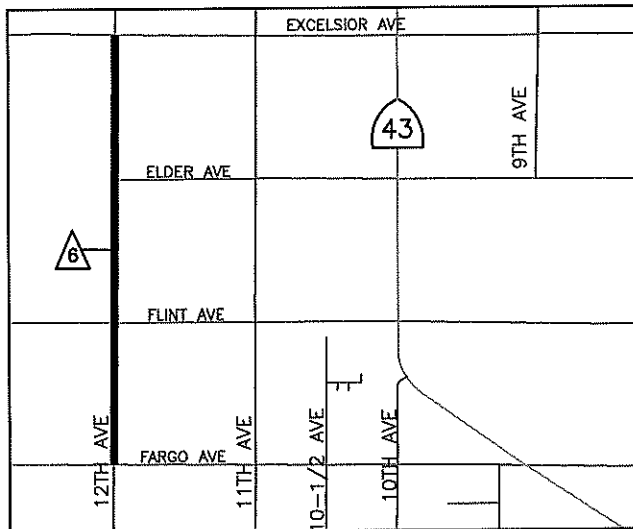
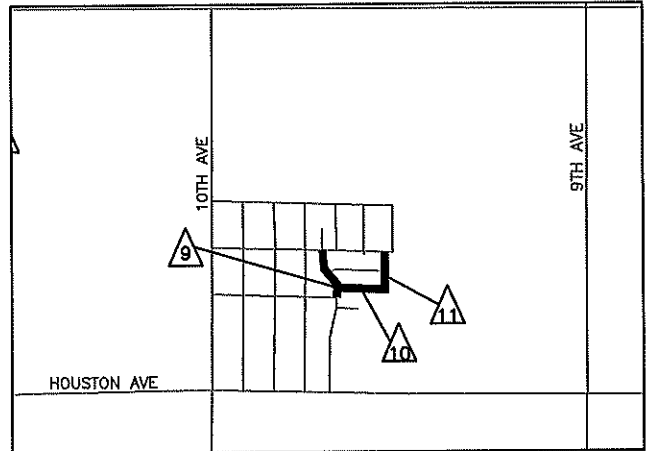
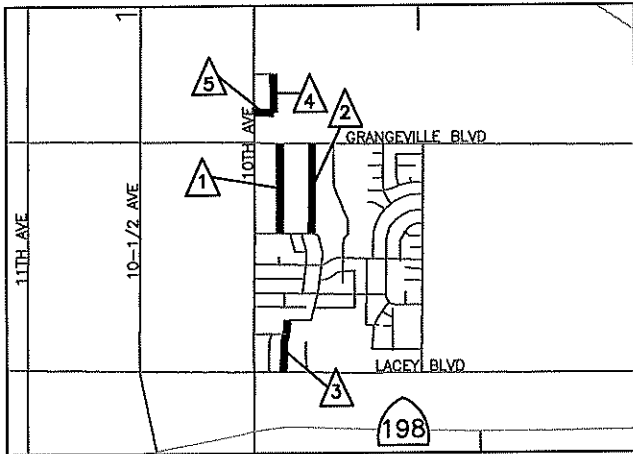
DATE: 09-14-2018



**KINGS COUNTY SB-1 FUNDED PROJECT**

NOT TO SCALE

# CAPE SEAL LOCATIONS



NO.	ROAD	LOCATION	LENGTH (MILE)
1	MARY ST	CAMERON ST TO GRANGEVILLE BLVD	0.40
2	BUELAH ST	CAMERON ST TO GRANGEVILLE BLVD	0.40
3	JESSIE AVE	LACEY BLVD TO WHITNEY DR	0.22
4	HARDCASTLE AVE	CAREY AVE TO CRASS AVE	0.17
5	CRASS AVE	HARDCASTLE AVE TO 10th AVE	0.08
6	12th AVE	FARGO AVE TO EXCELSIOR AVE	3.00
7	KANAWYER ST	14th AVE TO SOUTH END	0.12
8	14th AVE	GRANGEVILLE BLVD TO LC DITCH	0.50
9	SHAW PL	GARDEN DR TO HOME AVE	0.14
10	GARDEN DR	SHAW PL TO 8th PL	0.14
11	8th PL	HOME AVE TO GARDEN AVE	0.14
TOTAL,			5.31



APPROVED BY:  
DOMINIC TYBURSKI, P.E.

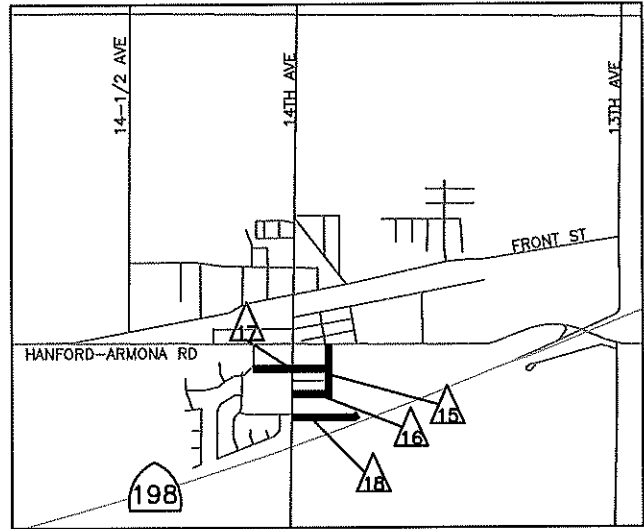
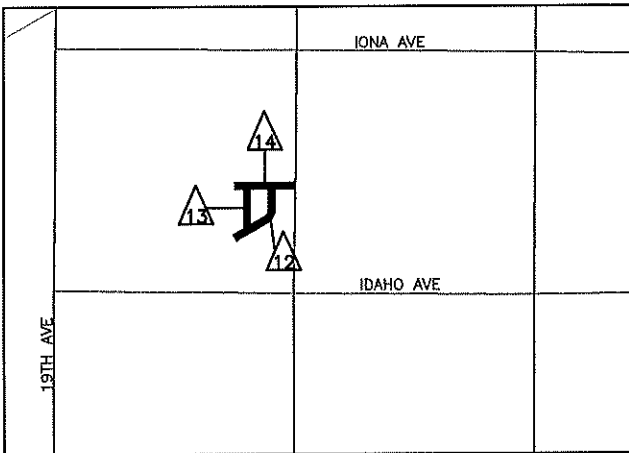
DRAWN BY: DT

DATE: 09-17-2018

**KINGS COUNTY SB-1 FUNDED PROJECT**

NOT TO SCALE

# CAPE SEAL LOCATIONS



NO.	ROAD	LOCATION	LENGTH (MILE)
12	POPLAR DR	INDIANA AVE TO WEST END	0.30
13	IRONWOOD DR	IOWA AVE TO INDIANA AVE	0.18
14	INDIANA AVE	18th AVE TO WEST END	0.24
15	C ST	HANFORD-ARMONA RD TO WALKER ST	0.14
16	WALKER ST	C ST TO 14th AVE	0.11
17	PIMO ST	C ST TO DAN DR	0.23
18	HOOD AVE	14th AVE TO EAST END	0.21
TOTAL <sub>2</sub>			1.41
TOTAL <sub>14</sub>			8.72



APPROVED BY:  
DOMINIC TYBURSKI, P.E.

DRAWN BY: DT

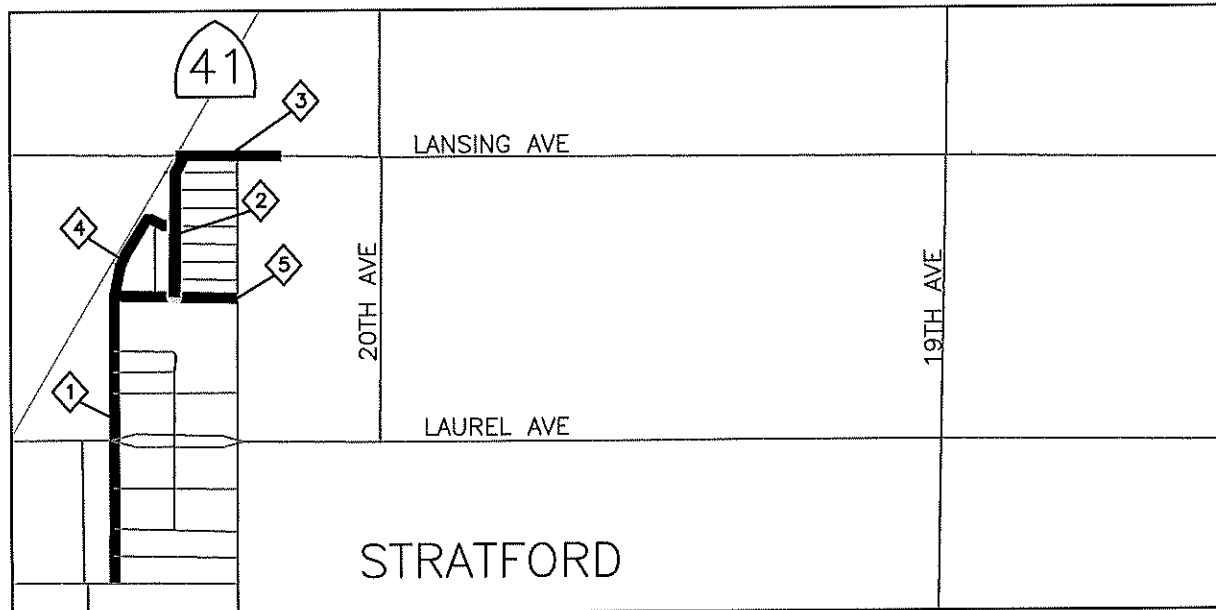
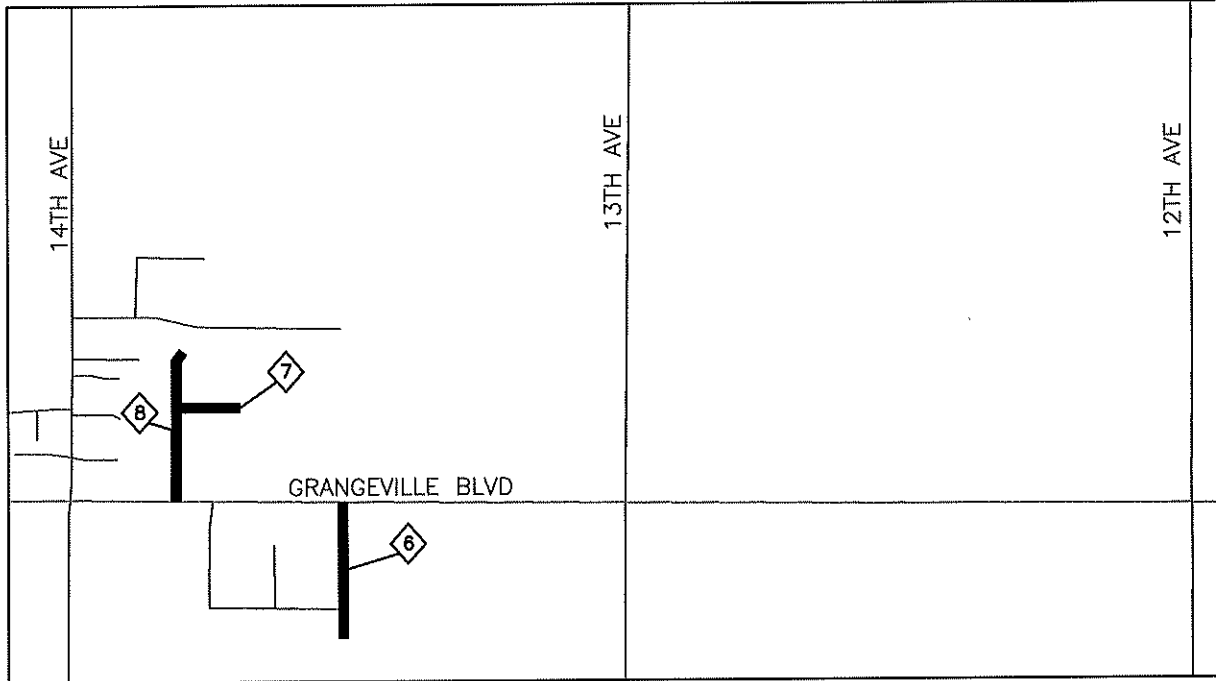
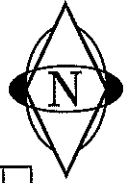
DATE: 09-14-2018



KINGS COUNTY SB-1 FUNDED PROJECT

NOT TO SCALE

# MICRO-SURFACING SEAL LOCATIONS



NO.	ROAD	LOCATION	LENGTH (MILE)
1	RAILROAD ST	SR41 TO 6th ST	0.50
2	CROSS ST	LANSING AVE TO 1st ST	0.25
3	LANSING AVE	SR41 TO STRATFORD CANAL	0.18
4	PROSPECT AVE	RAILROAD ST TO CROSS ST	0.15
5	1st ST	EMPIRE ST TO RAILROAD ST	0.21
6	13 <sup>1/2</sup> AVE	GRANGEVILLE BLVD TO SOUTH END	0.25
7	ALICE SPRINGS WY	FRONTIER ST TO EAST END	0.11
8	FRONTIER ST	GRANGEVILLE BLVD TO NORTH END	0.30
TOTAL,			1.95

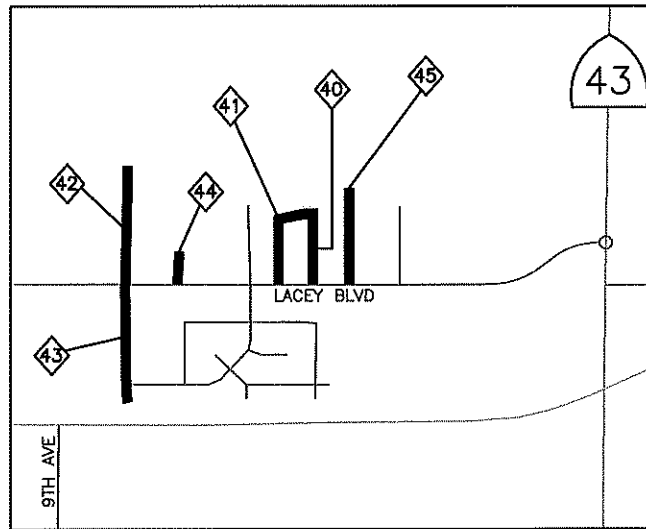
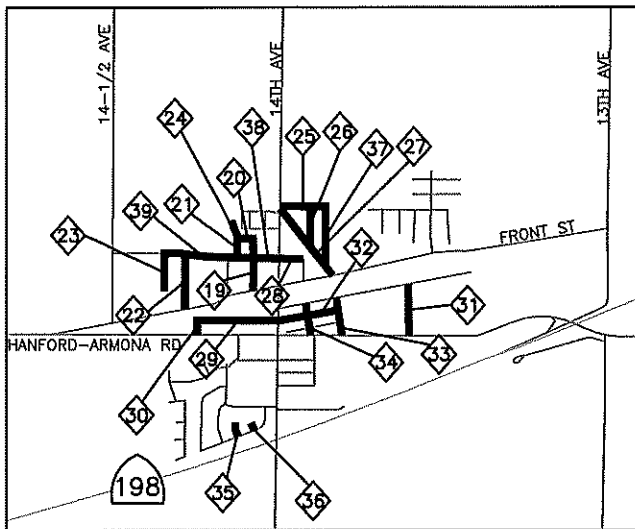
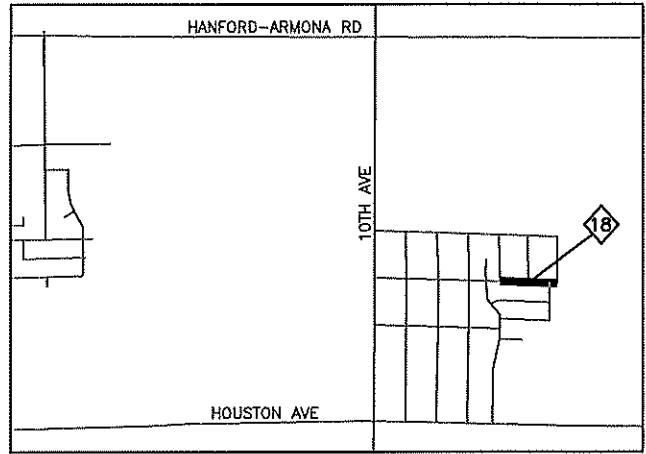
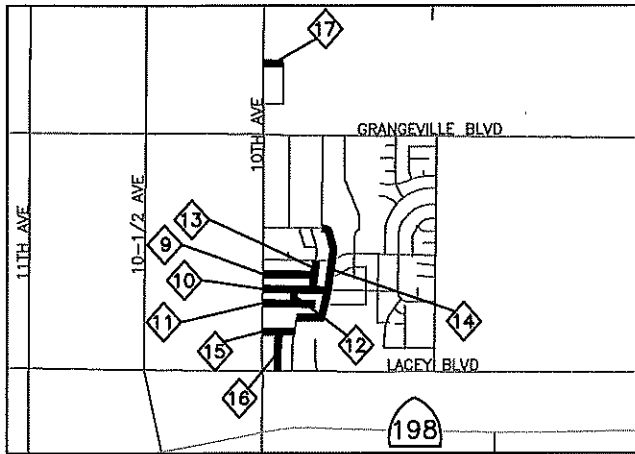
APPROVED BY:  
DOMINIC TYRURSKI, P.E.

DRAWN BY: DT

DATE: 09-14-2018



## MICRO-SURFACING SEAL LOCATIONS



No.	ROAD	LOCATION	LENGTH (MILE)
9	ELM ST	10th AVE TO GLADYS WY	0.22
10	MYRTLE ST	10th AVE TO WHITNEY DR	0.28
11	IVY ST	10th AVE TO EAST END	0.23
12	FORREST WY	IVY ST TO MYRTLE ST	0.06
13	GLADYS WY	MYRTLE ST TO FLORINDA ST	0.12
14	WHITNEY DR	JESSIE AVE TO CITY OF HANFORD	0.20
15	KRUGER ST	JESSIE AVE TO 10th AVE	0.14
16	MILLER ST	KRUGER AVE TO LACY BLVD	0.16
17	CAREY AVE	HARDCASTLE AVE TO 10th AVE	0.08
18	HOME AVE	4th PL TO 6th PL	0.16
19	HAMILL ST	FRONT ST TO PEACH ST	0.15
20	PEACH ST	HAMILL ST TO JENSEN ST	0.05
21	JENSEN ST	FRONT ST TO BARBARA ST	0.22
22	CEDAR ST	LOCUST ST TO FRONT ST	0.16
23	ARBOR ST	LOCUST ST TO SOUTH END	0.11
24	BARBARA DR	JENSEN ST TO WEST END	0.04
25	HIGHWAY AVE	14th AVE TO BALM OF GILEAD AVE	0.13
26	JACKSON ST	HIGHWAY AVE TO RAILROAD AVE	0.11
27	RAILROAD AVE	HIGHWAY AVE TO FRONT ST	0.25
28	LOCUST ST	14th AVE TO AMROSE ST	0.07
29	WALNUT ST	14th AVE TO RANDALL ST	0.24
30	RANDALL ST	WALNUT ST TO HANFORD-ARMONA RD	0.05
31	OAK AVE	6th ST TO HANFORD-ARMONA RD	0.16

No.	ROAD	LOCATION	LENGTH (MILE)
32	6th ST	14th AVE TO D ST	0.18
33	D ST	6th ST TO HANFORD-ARMONA RD	0.12
34	C ST	6th ST TO HANFORD-ARMONA RD	0.10
35	PALM CIR	VISTA DR TO NORTH END	0.04
36	FERN CIR	VISTA DR TO NORTH END	0.02
37	BALM OF GILEAD AVE	HWY AVE TO RAILROAD AVE	0.17
38	LOCUST ST	14th AVE TO JENSEN ST	0.15
39	LOCUST ST	JENSEN ST TO ARBOR DR	0.15
40	SIERRA DR	LACEY BLVD TO COAST AVE	0.13
41	COAST AVE	SIERRA DR TO LACEY BLVD	0.17
42	B <sup>34</sup> AVE	LACEY BLVD TO NORTH END	0.20
43	B <sup>34</sup> AVE	LACEY BLVD TO SOUTH END	0.22
44	COUNTY LN	LACEY BLVD TO NORTH END	0.08
45	VISTA LN	LACEY BLVD TO NORTH END	0.17
TOTAL <sub>2</sub>			5.29
TOTAL <sub>198</sub>			7.24



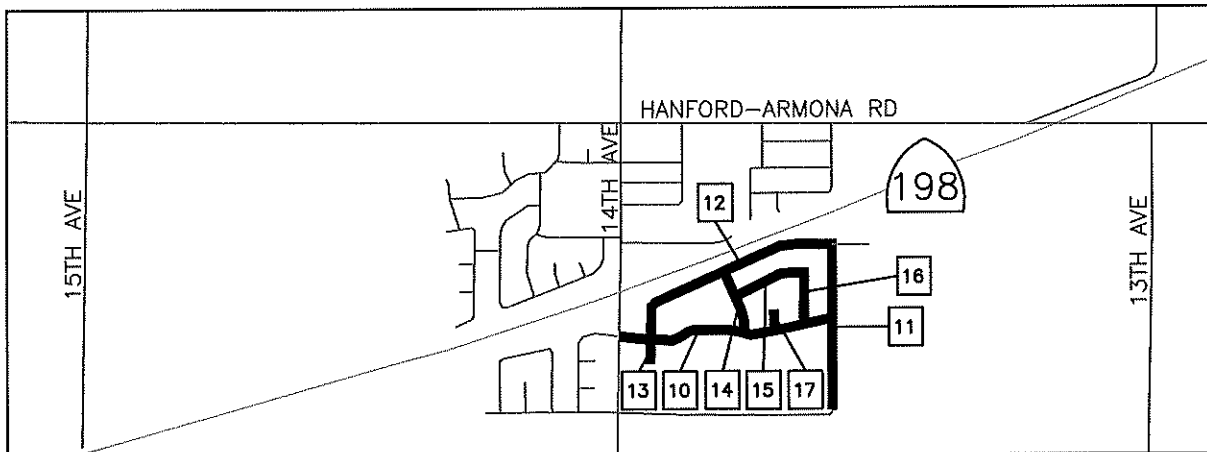
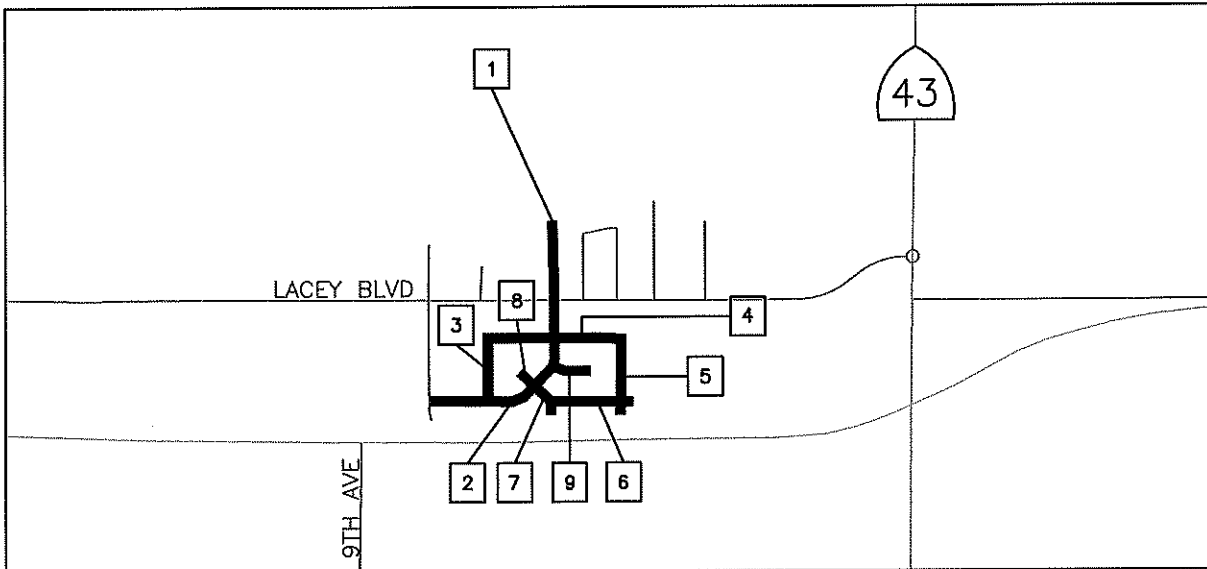
APPROVED BY:  
DOMINIC TYBURSKI, P.E.

DRAWN BY: DT

DATE: 09-17-2018



# CHIP SEAL LOCATIONS



NO.	ROAD	LOCATION	LENGTH (MILE)
1	CAROLYN AVE	LACEY BLVD TO RAILROAD TRACKS	0.14
2	CAROLYN AVE	LACEY BLVD TO 8 <sup>th</sup> AVE	0.35
3	MARTIN RD	CAROLYN AVE TO EDDY ST	0.11
4	EDDY ST	MARTIN RD TO DAVID ST	0.24
5	DAVID ST	EDDY ST TO CURTIS ST	0.11
6	CURTIS ST	DAVID ST TO EL TORO WY	0.13
7	EL TORO WY	CURTIS ST TO CAROLYN AVE	0.13
8	EL TORO WY	CAROLYN AVE TO NORTH END	0.04
9	LA VACA WY	CAROLYN AVE TO EAST END	0.08
10	ADA ST	14th AVE TO OAK AVE	0.47
11	OAK AVE	HOOD AVE TO HUME AVE	0.32
12	LYN ST	OAK AVE TO ADA ST	0.43
13	LYN ST	ADA ST TO SOUTH END	0.05
14	ALVIN ST	LYN ST TO ADA ST	0.12
15	ALLEN WY	ALVIN ST TO FLORA WY	0.14
16	FLORA WY	ALLEN WY TO ADA ST	0.09
17	CRISTIE CIR	ADA ST TO NORTH END	0.04
TOTAL			2.99

APPROVED BY:  
DOMINIC TYBURSKI, P.E.

DRAWN BY: DT

DATE: 09-14-2018





**KINGS COUNTY SB-1 FUNDED PROJECT**

NOT TO SCALE

**SB-1 FUNDED KINGS COUNTY ROADWAY IMPROVEMENT PROJECT**

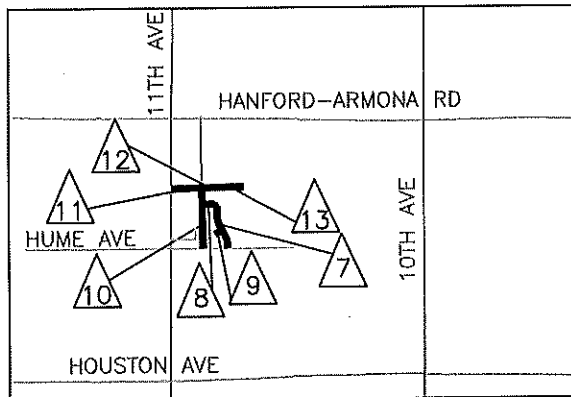
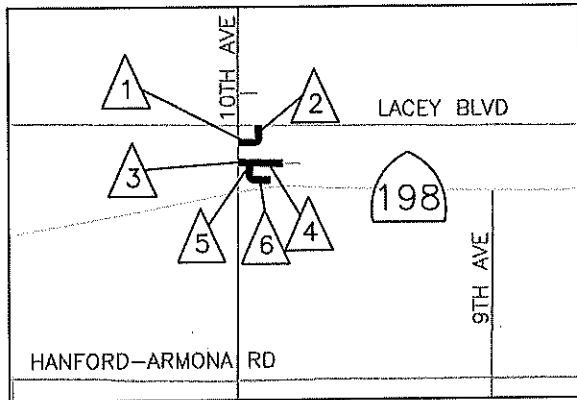
**Change Order #1**

	ROAD SEGMENT	TREATMENT	LOCATION	W=FT	MILES	SY
1	6 <sup>th</sup> Street	Cape Seal	10 <sup>th</sup> Ave. to Urton St.	25	0.07	1,056
2	Urton Street	Cape Seal	6 <sup>th</sup> St. to Lacey Blvd.	22	0.06	782
3	5 <sup>th</sup> Street	Cape Seal	10 <sup>th</sup> Ave. to Miller St.	40	0.04	990
4	5 <sup>th</sup> Street	Cape Seal	Miller St. to East Branch People's Ditch	28	0.13	2,122
5	Miller Street	Cape Seal	4 <sup>th</sup> St. to 5 <sup>th</sup> St.	24	0.06	814
6	4 <sup>th</sup> Street	Cape Seal	Miller St. to East End	24	0.08	1,173
7	Shepard Drive	Cape Seal	Hume Ave. to Christy Ln.	36	0.19	3,941
8	Christy Lane	Cape Seal	Shepard Dr. to Jones St.	24	0.06	826
9	Lee Circle	Cape Seal	Shepard Dr. to West End	36	0.04	800
10	Jones Street	Cape Seal	Thompson Dr. to Hume Ave.	32	0.25	4,650
11	Thompson Drive	Cape Seal	11 <sup>th</sup> Ave. to Jones St.	36	0.11	2,399
12	Thompson Drive	Cape Seal	Jones St. to East End of Curb & Gutter	26	0.06	911
13	Thompson Drive	Cape Seal	East End of Curb & Gutter to East End	17	0.12	1,228
<b>Total Cape Seal</b>					<b>1.27</b>	<b>21,693</b>

	ROAD SEGMENT	TREATMENT	LOCATION	W=FT	MILES	SY
1	5 <sup>th</sup> Street	Microsurfacing Seal	East Branch Peoples Ditch to East End	32	0.07	1,280
2	Turner Lane	Microsurfacing Seal	11 <sup>th</sup> Ave. to End of Valley Gutter	20	0.06	681
3	10 <sup>th</sup> Street (Dutch's Alley)	Microsurfacing Seal	10 <sup>th</sup> Ave. to Miller St.	14	0.08	623
4	Claridge Lane	Microsurfacing Seal	Kings Rd. to East End	26	0.06	895
5	Queens Lane	Microsurfacing Seal	Kings Rd. to East End	26	0.03	448
6	Bristol Lane	Microsurfacing Seal	Kings Rd. to East End	26	0.03	450
7	Heather Lane	Microsurfacing Seal	Kings Rd. to West End	26	0.03	439
8	Tudor Lane	Microsurfacing Seal	Kings Rd. to East End	26	0.03	448
<b>Total Microsurfacing Seal</b>					<b>0.38</b>	<b>5,265</b>

**Total Change Order #1 Roadway Improvements      1.65    miles**

# CHANGE ORDER #1 - CAPE SEAL LOCATIONS



NO.	ROAD	LOCATION	LENGTH (MILE)
1	6TH ST	10TH AVE TO URTON ST	0.07
2	URTON ST	6TH ST TO LACEY BLVD	0.06
3	5TH ST	10TH AVE TO MILLER ST	0.04
4	5TH ST	MILLER ST TO EAST BRANCH PEOPLE'S DITCH	0.13
5	MILLER ST	4TH ST TO 5TH ST	0.06
6	4TH ST	MILLER ST TO EAST END	0.08
7	SHEPARD DR	HUME AVE TO CHRISTY LN	0.19
8	CHRISTY LN	SHEPARD DR TO JONES ST	0.06
9	LEE CIR	SHEPARD DR TO WEST END	0.04
10	JONES ST	THOMPSON DR TO HUME AVE	0.25
11	THOMPSON DR	11TH AVE TO JONES ST	0.11
12	THOMPSON DR	JONES ST TO EAST END OF CURB & GUTTER	0.06
13	THOMPSON DR	EAST END OF CURB & GUTTER TO EAST END	0.12
TOTAL			1.27



APPROVED BY:  
DOMINIC TYBURSKI, P.E.

DRAWN BY: DT

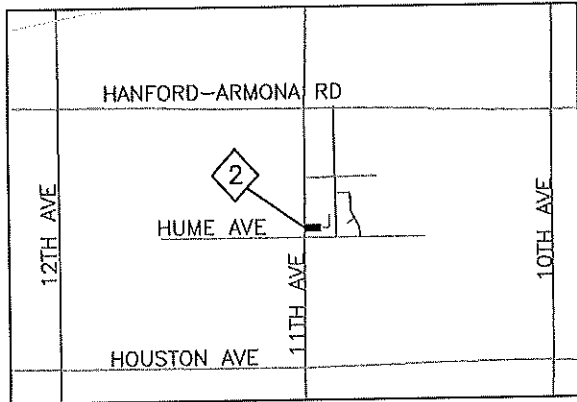
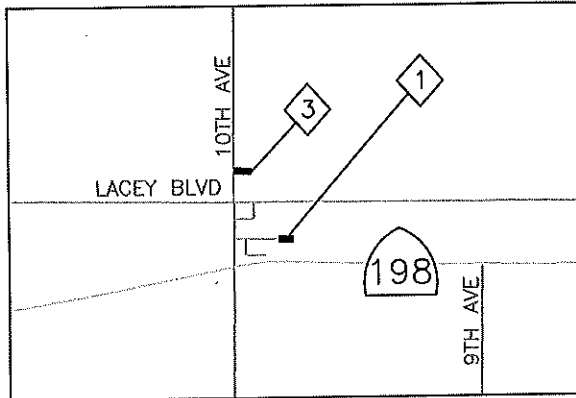
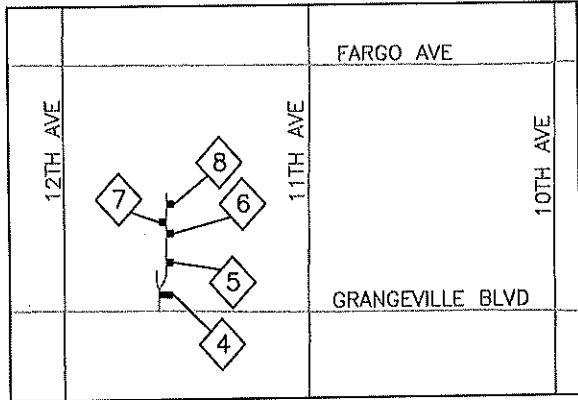
DATE: 09-14-2018



KINGS COUNTY SB-1 FUNDED PROJECT

NOT TO SCALE

# CHANGE ORDER #1 - MICRO-SURFACING SEAL LOCATIONS



NO.	ROAD	LOCATION	LENGTH (MILE)
1	5TH ST	EAST BRANCH PEOPLES DITCH TO EAST END	0.07
2	TURNER LN	11TH AVE TO END OF VALLEY GUTTER	0.06
3	10TH ST (DUTCH'S ALLEY)	10TH AVE TO MILLER ST	0.08
4	CLARIDGE LN	KINGS RD TO EAST END	0.06
5	QUEENS LN	KINGS RD TO EAST END	0.03
6	BRISTOL LN	KINGS RD TO EAST END	0.03
7	HEATHER LN	KINGS RD TO WEST END	0.03
8	TUDOR LN	KINGS RD TO EAST END	0.03
TOTAL			0.38



APPROVED BY:  
DOMINIC TYBURSKI, P.E.

DRAWN BY: DT

DATE: 09-14-2018



KINGS COUNTY SB-1 FUNDED PROJECT

NOT TO SCALE