



**2017 KINGS COUNTY
AGRICULTURAL CROP REPORT**

The Jewels of Kings County

This year's feature is the top 10 crops of Kings County. Over the past 25 years, four of the top 10 commodities (milk, cattle and calves, cotton, and tomatoes) find themselves consistently at the top. These top producing commodities have helped turn Kings County, ranked 33rd in population in California, into the 10th largest agricultural production county in the state, grossing over two billion dollars in 2017.

Since the county's humble beginnings, **milk** production has been essential to its sustainability. Even with the recent decline in the number of dairies, milk has continued to be the top commodity year after year. It is no coincidence that several top county crops relate to the dairy industry.



Kings County's king of the row crops, **cotton**, has had its share of ups and downs, but maintains a stronghold in the top 10. Although crop acreage has increased recently, the overall acreage is down significantly from its historic highs just a short time ago. It stands to reason why cotton is such a valuable commodity, with a single bale able to produce 215 pairs of jeans or 1,200 tee shirts.

Cattle are descendants of wild oxen and have been domesticated for over 10,500 years. Sharing a staggering 80% of genes with humans, it's no wonder their social habits rival ours. They even have regional accents! California cows sound different than their East Coast and Midwest counterparts. This commodity group rose as high as number two recently, but has retreated to the number three spot.

Given California's rich soils coupled with its innovative technological research, it is no surprise the state is home to one of the few places on Earth where **almonds** are able to thrive. California is credited with producing 99% of the almond production in the United States and over 80% of the production worldwide.

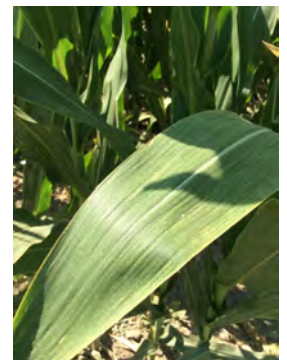


Pistachios are a rising star within the county, as well as the state, entering the top 10 in 2001 with their production value continuing to creep up just about every year. Strong domestic and export markets contribute to the ever-increasing acres planted annually.

The **tomato** has come a long way since its introduction to United States markets in 1844. With California responsible for 90% of the nation's tomato production and over half of the world's processed tomato tonnage, the crop remains a top commodity in both Kings County and the state.

Like almonds, 99% of the nation's commercial **walnut** production comes from California, as well as 75% of the production worldwide. This nut accounts for over \$1.9 billion in farm gate revenue. While 60% of the harvest may go to export, there are still plenty of nuts that stay to be consumed domestically.

Since the 1970's, more than 80% of the states **silage corn** has been grown in the San Joaquin Valley, with Kings County being one of the dominant producers. Rising hand in hand with milk production, it is simple to see the relationship between dairies and corn, making it a commodity likely to stay in the top 10 for years to come.



Got any **grapes**? With a relatively dry climate, California finds itself in a perfect meteorological climate for the 99% of commercial grapes grown nationally. Table grape growers export more than 100 million boxes of grapes each year. Raisin growers in California are responsible for 50% of the world's supply.



Peaches, like other members of the Prunus species (almonds, plums, nectarines, etc.) find the Central Valley's climate ideal. This crop holds its spot at number 10, just nudging out alfalfa.

Kings County's top 10 crops will continue to evolve as the years come and go, but in the short term, we will likely see very little change with our top commodities.



Department of Agriculture / Measurement Standards

JIMMY HOOK
Agricultural Commissioner
Sealer of Weights and Measures

June 19, 2018

Secretary Karen Ross
California Department of Food and Agriculture
and
The Honorable Board of Supervisors
County of Kings, California

It is my privilege to submit to you the 2017 Annual Agricultural Crop Report for the County of Kings. This report contains statistical information on the acreage, yield and gross values in accordance with Sections 2272 and 2279 of the California Food and Agricultural Code. The numbers in this report are gross values and do not represent net income or loss to producers.

The gross value of all agricultural crops and products produced during 2017 in Kings County was \$2,066,029,000. This represents an increase of \$29,027,000 (1.4%) from the 2016 value.

Livestock and Poultry Products had the largest increase in value at \$39,886,000 (6.2%) due primarily to higher milk prices. Field crops increased in value \$25,236,000 (6.9%) due to higher pima cotton acreage and prices. Seed Crops increased \$5,497,000 (62.9%) due mainly to an increase in acreage. Apiary Products increased in value \$5,180,000 (49.5%) due primarily to an increase in acres pollinated. Vegetable Crops also increased \$3,817,000 (2.2%) due to higher prices.

Livestock and Poultry had the largest decrease in value at \$38,688,000 (12.5%) due primarily to less head sold. Fruit and Nut Crops also decreased in value \$11,901,000 (2.3%) due mainly to lower pistachio production and price.

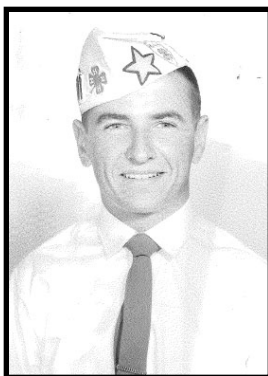
Milk continues to be the top commodity with a value of \$676,629,000 in 2017.

My thanks and appreciation is extended to the many producers and organizations who contributed information for this report. This report was compiled and prepared by Janet Eckles, Agricultural and Standards Inspector, Shanna Vickers, Agricultural and Standards Inspector and Steve Schweizer, Deputy Agricultural Commissioner/Sealer.

Respectfully Submitted,

Jimmy Hook

DEDICATION



TIM NISWANDER

With great appreciation, the 2017 Kings County Agricultural Crop Report is dedicated to Tim Niswander. His loyal service to Kings County started February 22, 1988 as an Agriculture and Standards Inspector, working primarily in the weights and measure division. On January 15, 1996, he was promoted to Deputy Agriculture Commissioner-Sealer and later, Assistant Agriculture Commissioner-Sealer on August 10, 1998. He was appointed the Kings County Agriculture Commissioner-Sealer on August 18, 2003. During his years of service, Tim tackled many issues from drought to Asian Citrus Psyllid detection in Kings County. Tim served on many committees, including the Statewide Animal Disposal Working Group, California Ag Teachers Association, Kings County Agriculture Advisors Committee, and as an Executive Secretary for the California Agricultural Commissioners and Sealers Association. He helped establish and supervise the Kings County Mortality Intervention Team. The Kings County Agriculture Department staff wish Tim all the best for a happy retirement after a lifelong commitment to agriculture.

TABLE OF CONTENTS

Cover Story.....	1
Summary Letter.....	2
Dedication.....	3
Table of Contents.....	4
County Administration/Ag Commissioner-Sealer Personnel.....	5
Field Crops.....	6
Fruit & Nut Crops.....	8
Seed Crops.....	10
Vegetable Crops.....	10
Livestock & Poultry.....	11
Livestock & Poultry Products.....	12
Apiary Products.....	13
5 Year Comparison of Acreage and Crop Value.....	14
Top 10 Commodities.....	15
Sustainable Agriculture Report.....	16
Export Commodities and Trade Partners.....	18
Top Export Countries.....	19
Organic Production.....	20
Certified Farmer's Market.....	20
Land Use.....	21
Weights & Measures.....	22
Youth in Agriculture.....	23
Kings County General Information.....	24
Kings County Rainfall	25

COUNTY ADMINISTRATION

AG COMMISSIONER – SEALER PERSONNEL

Kings County Board of Supervisors

Joe A. Neves	District I	Richard Valle	District II
Doug Verboon	District III	Craig Pedersen	District IV
Richard Fagundes			District V

County Administrative Officer

Rebecca Campbell

Agricultural Commissioner - Sealer of Weights and Measures

Jimmy Hook

Deputy Agricultural Commissioner - Sealers

Rusty Lantsberger	Lynda Schrumpf	Steve Schweizer
-------------------	----------------	-----------------

Agricultural and Standards Inspectors

Mallory Areias	Jared Ball	Janet Eckles	Vince Evans	
Mario Gutierrez	Elvis Martinez	Garen Oliveira	Bruce Perez	Jason Perez
Rafael Perla	Alfredo Prieto	Robert Torrez	Shanna Vickers	

Agricultural and Standards Aides

Randall Bray	Garrett Roe
--------------	-------------

Executive Secretary

Jennifer Rios

Account Clerk

Julie Henderson

Office Assistant

Chelsey Huckabay

FIELD CROPS

Crop	Year	Harvested Acres	Production Per Acre	Total	Unit	Value Per Unit	Total
Alfalfa, Hay	2017	22,903	7.49	171,543	Ton	\$177.00	\$30,363,000
	2016	27,485	7.69	211,360	Ton	\$142.00	\$30,013,000
Alfalfa, Silage	2017	557	6.56	3,654	Ton	\$35.10	\$128,000
	2016	3,046	4.13	12,580	Ton	\$34.40	\$433,000
Alfalfa, Silage All Year	2017	1,620	21.35	34,587	Ton	\$39.20	\$1,356,000
	2016	1,137	30.18	34,315	Ton	\$23.10	\$793,000
Barley, Silage a/	2017	7,318	13.02	95,280	Ton	\$26.00	\$2,477,000
	2016				Ton		
Corn, Silage	2017	48,107	23.20	1,116,082	Ton	\$41.80	\$46,652,000
	2016	44,962	25.25	1,135,291	Ton	\$40.10	\$45,525,000
Cotton, Acala - Lint b/	2017	10,599	2.93	31,055	Bale	\$396.00	\$12,298,000
	2016	8,535	3.64	31,067	Bale	\$427.00	\$13,266,000
Cotton, Acala - Seed	2017			12,810	Ton	\$280.00	\$3,587,000
	2016			13,442	Ton	\$292.50	\$3,932,000
Cotton Pima - Lint b/	2017	101,791	2.67	271,782	Bale	\$746.00	\$202,749,000
	2016	80,540	3.20	257,728	Bale	\$683.00	\$176,028,000
Cotton Pima - Seed	2017			112,110	Ton	\$255.00	\$28,588,000
	2016			111,512	Ton	\$255.00	\$28,436,000
Oat, Hay	2017	1,039	3.04	3,159	Ton	\$94.00	\$297,000
	2016	892	3.01	2,685	Ton	\$62.00	\$166,000
Pasture Range	2017	337,691			Ton	\$13.50	\$4,559,000
	2016	311,816			Ton	\$11.25	\$3,508,000
Sorghum Silage	2017	16,897	15.16	256,159	Ton	\$31.30	\$8,018,000
	2016	12,412	17.97	223,044	Ton	\$27.80	\$6,201,000
Triticale, Silage	2017	1,776	15.82	28,096	Ton	\$30.40	\$854,000
	2016	2,198	16.01	35,190	Ton	\$24.20	\$852,000

FIELD CROPS

Crop	Year	Harvested Acres	Production Per Acre	Total	Unit	Value Per Unit	Total
Wheat, Grain	2017	18,048	2.53	45,661	Ton	\$214.00	\$9,771,000
	2016	23,527	2.51	59,053	Ton	\$223.00	\$13,169,000
Wheat, Hay	2017	705	5.01	3,532	Ton	\$114.10	\$403,000
	2016	1,985	3.87	7,682	Ton	\$86.00	\$661,000
Wheat, Silage	2017	40,563	16.86	683,892	Ton	\$30.50	\$20,859,000
	2016	42,818	17.00	727,906	Ton	\$29.60	\$21,546,000
Other c/	2017	43,319					\$19,877,000
	2016	60,937					\$23,071,000
Total	2017	652,933					\$392,836,000
	2016	622,290					\$367,600,000

a/ Previously included in "Other"

b/ 495 lbs. = 1 bale

c/ Includes alfalfa stubble, barley hay, beans (dry), corn (grain), corn (human consumption), forage, hay (other), oat silage, pasture (irrigated), ryegrass, safflower, sudan hay, sudan silage, triticale grain, and wheat straw.



FRUIT & NUT CROPS

Crop	Year	Harvested Acres	Production Per Acre	Total	Unit	Value Per Unit	Total
Almonds	2017	27,460	1.11	30,481	Ton	\$4,710.00	\$143,566,000
	2016	23,131	1.07	24,750	Ton	\$4,820.00	\$119,295,000
Almond Hulls	2017			60,962	Ton	\$68.30	\$4,164,000
	2016			49,500	Ton	\$73.63	\$3,645,000
Almond Shells	2017			15,241	Ton	\$4.39	\$67,000
	2016			12,375	Ton	\$5.77	\$71,000
Apricots	2017	794	7.48	5,939	Ton	\$1,970.00	\$11,700,000
	2016	780	11.36	8,861	Ton	\$1,530.00	\$13,557,000
Cherries	2017	1,603	2.96	4,745	Ton	\$5,880.00	\$27,901,000
	2016	1,371	2.88	3,948	Ton	\$4,410.00	\$17,411,000
Grapes, Raisin	2017	1,839	2.57	4,726	Ton	\$1,700.00	\$8,034,000
	2016	1,696	2.43	4,121	Ton	\$1,430.00	\$5,893,000
Grapes, Table	2017	866	12.45	10,782	Ton	\$1,760.00	\$18,976,000
	2016	824	13.48	11,108	Ton	\$1,550.00	\$17,217,000
Grapes, Wine	2017	3,597	15.66	56,329	Ton	\$287.00	\$16,166,000
	2016	3,730	13.63	50,840	Ton	\$286.00	\$14,540,000
Grapes, Total	2017	6,302					\$43,176,000
	2016	6,250					\$37,650,000
Nectarines	2017	1,349	9.46	12,762	Ton	\$1,350.00	\$17,229,000
	2016	1,497	10.52	15,748	Ton	\$1,380.00	\$21,732,000
Peaches, Cling	2017	636	16.03	10,195	Ton	\$458.00	\$4,669,000
	2016	703	18.20	12,795	Ton	\$499.00	\$6,385,000
Peaches, Freestone	2017	2,102	10.87	22,849	Ton	\$1,420.00	\$32,446,000
	2016	1,889	11.23	21,213	Ton	\$1,200.00	\$25,456,000
Peaches, Total	2017	2,738					\$37,115,000
	2016	2,592					\$31,841,000

FRUIT & NUT CROPS

Crop	Year	Harvested Acres	Production Per Acre	Total	Unit	Value Per Unit	Total
Pistachios	2017	25,375	1.13	28,674	Ton	\$4,050.00	\$116,130,000
	2016	21,859	1.90	41,532	Ton	\$4,300.00	\$178,588,000
Plums	2017	2,125	8.44	17,935	Ton	\$1,520.00	\$27,261,000
	2016	2,144	7.75	16,616	Ton	\$1,410.00	\$23,429,000
Walnuts	2017	16,655	1.69	28,147	Ton	\$2,320.00	\$65,301,000
	2016	14,972	2.01	30,094	Ton	\$1,870.00	\$56,276,000
Other a/	2017	4,034					\$19,602,000
	2016	4,050					\$21,618,000
TOTAL	2017	88,435					\$513,212,000
	2016	78,646					\$525,113,000

a/ Includes apples, blueberries, firewood, kiwifruit, olives, oranges, pears, pecans, persimmons, pluots, pomegranates, prunes, quince, strawberries, and tangerines.



SEED CROPS

Crop	Year	Harvested		Unit	Value	
		Acres	Total		Per Unit	Total
Seed Crops a/	2017	12,736		Lbs		\$14,236,000
	2016	6,039		Lbs		\$8,739,000

a/ Includes alfalfa (certified), asparagus, broccoli, cabbage, cotton (certified), lettuce, and onion.



VEGETABLE CROPS

Crop	Year	Harvested		Production Per Acre	Total	Unit	Value	
		Acres	Total				Per Unit	Total
Tomatoes, Processed	2017	27,079		57.34	1,552,710	Ton	\$71.10	\$110,398,000
	2016	29,750		56.68	1,686,230	Ton	\$70.70	\$119,216,000
Other a/	2017	8,932						\$69,252,000
	2016	9,730						\$56,617,000
TOTAL	2017	36,011						\$179,650,000
	2016	39,480						\$175,833,000

a/ Includes asparagus, bell peppers, broccoli, cabbage, cantaloupe, carrots, corn (sweet), garlic (fresh), garlic (processed), melons (misc.), onions (fresh), onions (processed), parsley, radicchio, squash, tomatoes (fresh), tomato transplants, and watermelons.

INVENTORIES OF LIVESTOCK & POULTRY

Item	December, 2017 Number of Head	December, 2016 Number of Head
Cattle and Calves		
All	425,000	420,000
Dairy Cows 2 Years and Over	175,000	180,000
Cattle and Calves on Feed	6,000	5,400
Other	244,000	234,600
Sheep and Lambs		
Sheep and Lambs	12,459	8,645
Goats	16,233	9,741
Hogs and Pigs	778	523
Turkeys	452,162	407,943

LIVESTOCK & POULTRY

Item	Year	Number of Head	Total Liveweight	Unit	Value Per Unit	Total
Cattle and Calves	2017	210,607		Head	\$919.00	\$193,548,000
	2016	215,398		Head	\$1022.00	\$220,137,000
Turkeys	2017	885,354	25,644,955	Lb.	\$0.80	\$20,516,000
	2016	1,099,386	33,023,533	Lb.	\$0.75	\$24,768,000
Other a/	2017	9,310,769				\$56,549,000
	b/ 2016	11,726,950				\$64,096,000
TOTAL	2017	10,406,730				\$270,613,000
	b/ 2016	13,041,734				\$309,001,000

a/ Includes chickens, ducks, goats, hogs, pigs, sheep, and lambs.

b/ Revised

LIVESTOCK & POULTRY PRODUCTS

Item	Year	Total Production	Unit	Value Per Unit	Total
Manure a/	2017	796,673	Ton	\$4.20	\$3,346,000
	2016	761,319	Ton	\$4.30	\$3,274,000
Milk, Market	2017	41,163,969	Cwt.	\$16.32	\$671,796,000
	2016	42,698,475	Cwt.	\$14.80	\$631,937,000
Milk, Mfg.	2017	22,323	Cwt.	\$18.10	\$404,000
	2016	17,881	Cwt.	\$16.05	\$287,000
Milk, Goats	2017	117,168	Cwt.	\$37.80	\$4,429,000
	2016	128,710	Cwt.	\$36.40	\$4,685,000
Milk Total	2017	41,303,460	Cwt.		\$676,629,000
	2016	42,845,066	Cwt.		\$636,909,000
Wool b/	2017	70,900	Lb.	\$2.40	\$170,000
	2016	50,800	Lb.	\$1.50	\$76,000
TOTAL	2017				\$680,145,000
	2016				\$640,259,000

a/ Includes poultry manure

b/ Price does not include wool incentive.



Photo by Anna Dooley (Kings Harvest 4-H)

APIARY PRODUCTS

Item	Year	Total Production	Unit	Value Per Unit	Total
Honey	2017	336,848	Lb.	\$2.01	\$677,000
	2016	251,848	Lb.	\$2.12	\$534,000
Beeswax	2017	10,348	Lb.	\$2.98	\$30,800
	2016	2,735	Lb.	\$2.36	\$6,450
Pollination, Seed Alfalfa	2017	3,500	Colonies	\$60.00	\$210,000
	2016	7,435	Colonies	\$60.00	\$446,100
Pollination, Tree Fruit & Nuts a/	2017	78,210	Colonies	\$184.00	\$14,391,000
	2016	51,027	Colonies	\$183.33	\$9,355,000
Pollination, Melons	2017	530	Colonies	\$37.50	\$19,900
	2016	305	Colonies	\$38.00	\$11,600
Pollination, Vegetable Seed	2017	5,129	Colonies	\$60.00	\$308,000
	2016	1,729	Colonies	\$60.00	\$104,000
TOTAL	2017				\$15,637,000
	2016				\$10,457,000

a/ Includes almonds, cherries, pluots, and plums.

AGRICULTURAL QUICK FACTS

Kings County is ranked:

- **10th** among California counties in agricultural production
- **1st** among California counties in the production of cotton lint and cottonseed
- **3rd** among California counties in the production of milk and cream, tomatoes (processing), and apricots.
- **5th** among California counties in the production of silage, pistachios and peaches.

Information is based on 2016 County Agricultural Commissioners' Crop Reports

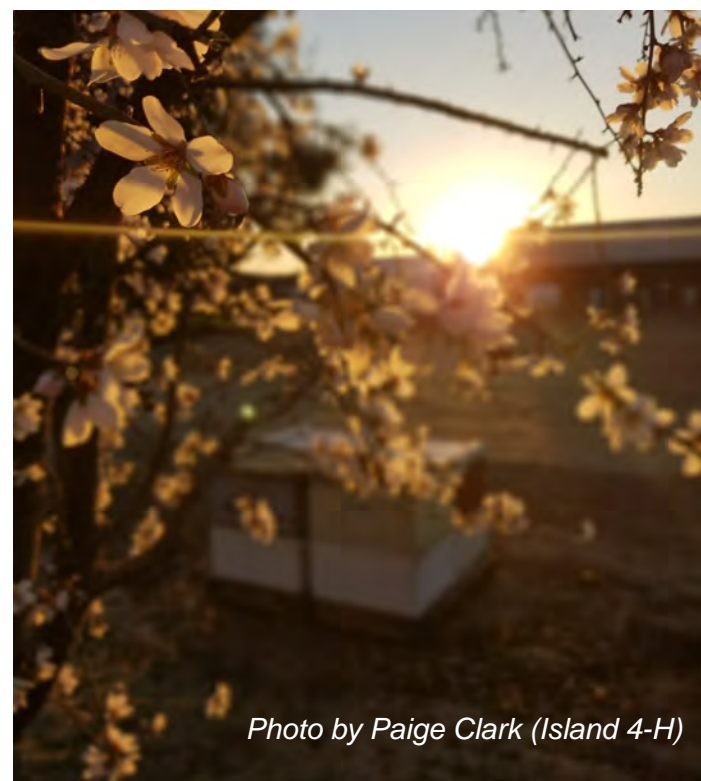


Photo by Paige Clark (Island 4-H)

5 YEAR COMPARISON OF ACREAGE AND CROP VALUES

	2017	2016	2015	2014	2013
Apiary Products	\$15,637,000	\$10,457,000	\$9,376,000	\$8,483,000	\$7,801,000
Field Crops Acreage	\$392,836,000 652,933	\$367,600,000 622,290	\$387,531,000 628,287	\$486,219,000 592,831	\$591,715,000 687,709
Fruit & Nut Crops Acreage	\$513,212,000 88,435	\$525,113,000 78,646	\$513,301,000 76,893	\$569,018,000 76,783	\$513,872,000 73,964
Livestock and Poultry	\$270,313,000	* \$309,001,000	\$255,110,000	\$207,013,000	\$231,050,000
Livestock and Poultry Products	\$680,145,000	\$640,259,000	\$655,555,000	\$973,040,000	\$777,477,000
Seed Crops Acreage	\$14,236,000 12,736	\$8,739,000 6,039	\$4,315,000 4,790	\$8,680,000 4,539	\$10,274,000 9,840
Vegetable Crops Acreage	\$179,650,000 36,011	\$175,833,000 39,480	\$195,864,000 40,557	\$219,293,000 47,210	\$152,989,000 48,945
TOTAL	\$2,066,029,000	* \$2,037,002,000	\$2,021,052,000	\$2,471,746,000	\$2,267,178,000

* Revised

AGRICULTURAL EFFICIENCY...

Production Per Acre Comparison for Miscellaneous Crops 2017 & 1967

Crop	2017 Production/Acre	Unit	1967 Production/Acre	Unit
Corn, Silage	23.20	Tons	15.28	Tons
Cotton	2.93	Bales	1.72	Bales
Oats	3.04	Tons	1.10	Tons

TOP 10 COMMODITIES

Crop	2017 Rank	Dollar Value	2016 Rank	2015 Rank	1967 Rank
Milk, Total	1	\$676,629,000	1	1	3
Cotton, Total	2	\$247,222,000	2	3	1
Cattle & Calves	3	\$193,548,000	3	2	2
Almonds, Total	4	\$147,797,000	5	4	36
Pistachios	5	\$116,130,000	4	6	N/A
Tomatoes, Processed	6	\$110,398,000	6	5	32
Walnuts	7	\$65,301,000	7	9	15
Corn, Silage	8	\$46,652,000	8	7	10
Grapes, Total	9	\$43,176,000	9	10	11
Peaches, Total	10	\$37,115,000	10	11	7

A LOOK BACK, 50 YEARS AGO.....1967 KINGS COUNTY'S TOP 10 COMMODITIES

Crop	Rank	Dollar Value
Cotton, Total	1	\$28,675,600
Cattle & Calves	2	\$22,251,000
Milk, Total	3	\$17,049,000
Barley, Total	4	\$14,828,000
Alfalfa, Total	5	\$13,151,000
Safflower, Total	6	\$4,547,000
Peaches	7	\$3,708,000
Turkeys	8	\$3,176,000
Corn, Total	9	\$2,722,000
Melons, Cantaloupe	10	\$2,493,000
Total		\$112,600,600

SUSTAINABLE AGRICULTURE REPORT

County Biological Control

Pest	Agent/Mechanism	Scope of Program
Puncture Vine <u>Tribulus terrestris</u>	Stem Mining Weevil <u>Microlarinus lypriformis</u>	Generally Distributed
	Seed Head Weevil <u>Microlarinus lareynli</u>	Generally Distributed
Yellow Starthistle <u>Centaurea solstitialis</u>	Seed Head Weevil <u>Bangastemus orientalis</u>	Generally Distributed
	Gall Fly <u>Urophora sirunaseva</u>	Generally Distributed
	Hairy Weevil <u>Eustenopus villosus</u>	Generally Distributed
Ash Whitefly <u>Siphoninus phillyreae</u>	Parasitic Wasp <u>Encarsia partenopea</u>	Generally Distributed
Red Gum Lerp Psyllid <u>Glycaspis brimblecombei</u>	Parasitic Wasp <u>Psyllaephagus bliteus</u>	Generally Distributed
Silverleaf Whitefly <u>Bemisia argentifolii</u>	Parasitic Wasp <u>Eretmocerus sp. (M95104)</u>	Generally Distributed
	<u>Eretmocerus sp. (M95012)</u>	Generally Distributed

County Pest Exclusion

Pest	Agent/Mechanism	Scope of Program
Glassy Winged Sharpshooter 	Nursery/Citrus Inspections	534 Shipments Inspected
Gypsy Moth <u>Lymantria dispar</u> 	Household Goods Shipments	9 Shipments Inspected
Various Pests	Truck Shipments	17,447 Units Inspected

Crops

Crops	Activity	Scope of Program
Export Commodities	Phytosanitary Certification	1,317 Issued
Export Seed	Field Inspections	49 Sites / 1809 Acres

SUSTAINABLE AGRICULTURE REPORT

County Pest Eradication

Pest	Agent/Mechanism	Scope of Program
Pink Bollworm <u>Pectinophora gossypiella</u>	Mechanical/Host Free Period	111,664 Acres
Alligatorweed <u>Alternanthera philoxeroides</u>	Visual Inspection Mechanical/Chemical	39 Sites Treated

Pest	Number of Traps	Number of Servicing	Type of Trap
All Purpose Fruit Fly	115	1,071	Champ
Asian Citrus Psyllid	188	3,133	Yellow Panel
European Corn Borer	13	187	Pherocon II
European Grape Vine Moth	580	6,954	Delta
European Pine Shoot Moth	6	24	Pherocon II
Glassy Wing Sharpshooter	98	1,071	Yellow Panel
Gypsy Moth	80	535	Delta
Japanese Beetle	80	535	Japanese Beetle
Light Brown Apple Moth	151	2,197	Jackson
Mediterranean Fruit Fly	151	2,197	Jackson
Melon Fly	74	617	Jackson
Mexican Fruit Fly	100	2,678	McPhail
Oriental Fruit Fly	151	2,197	Jackson
TOTAL	1,787	23,396	



Jackson Trap



Japanese Beetle Trap



McPhail Trap



Yellow Panel Trap

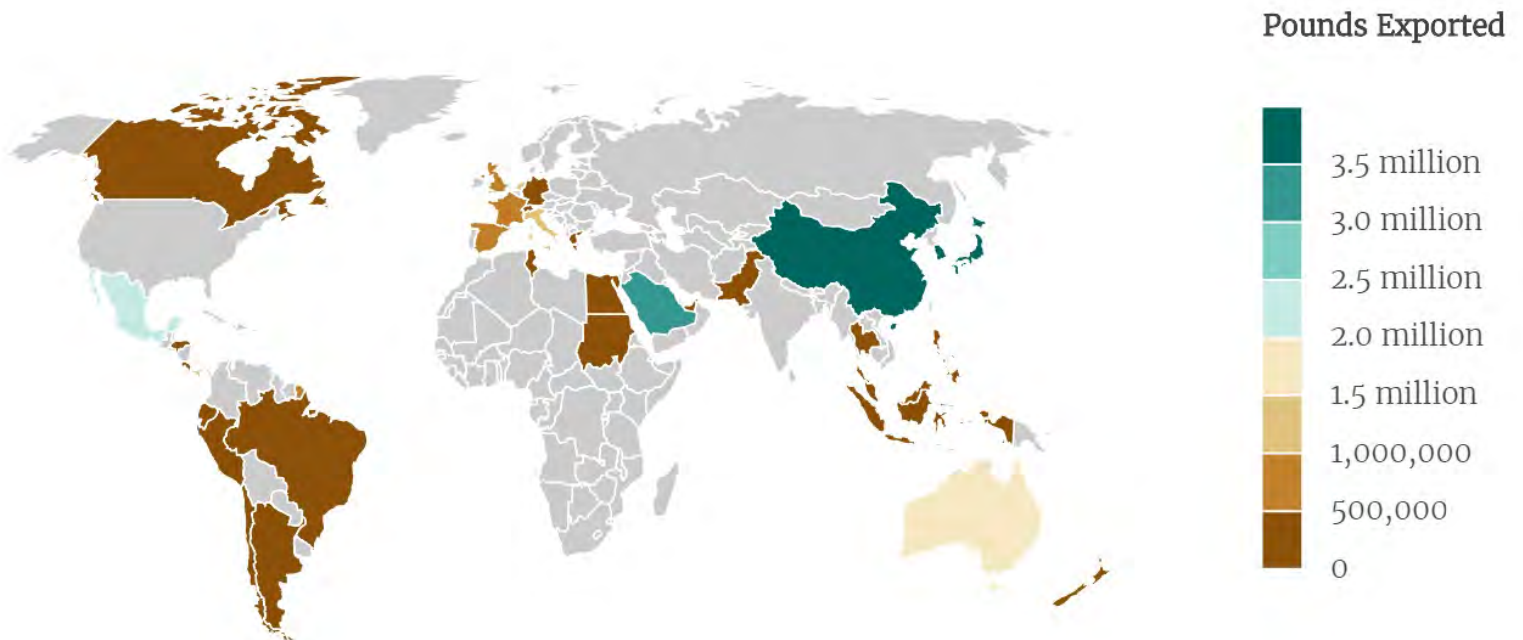
EXPORT COMMODITIES

Commodities Grown and Exported From Kings County

Alfalfa Seed
Almonds
Apricots
Asparagus Seed
Blueberries
Cherries
Cotton

Cotton Seed
Grapes
Kiwifruit
Nectarines
Onions
Onion Seed
Parsley Seed

Peaches
Pistachios
Plums
Pluots
Pomegranates
Sudan Grass Seed



Export Trade Partners of Kings County in 2017

Argentina
Australia
Belarus
Brazil
Canada
Chile
China
Columbia
Costa Rica
Ecuador

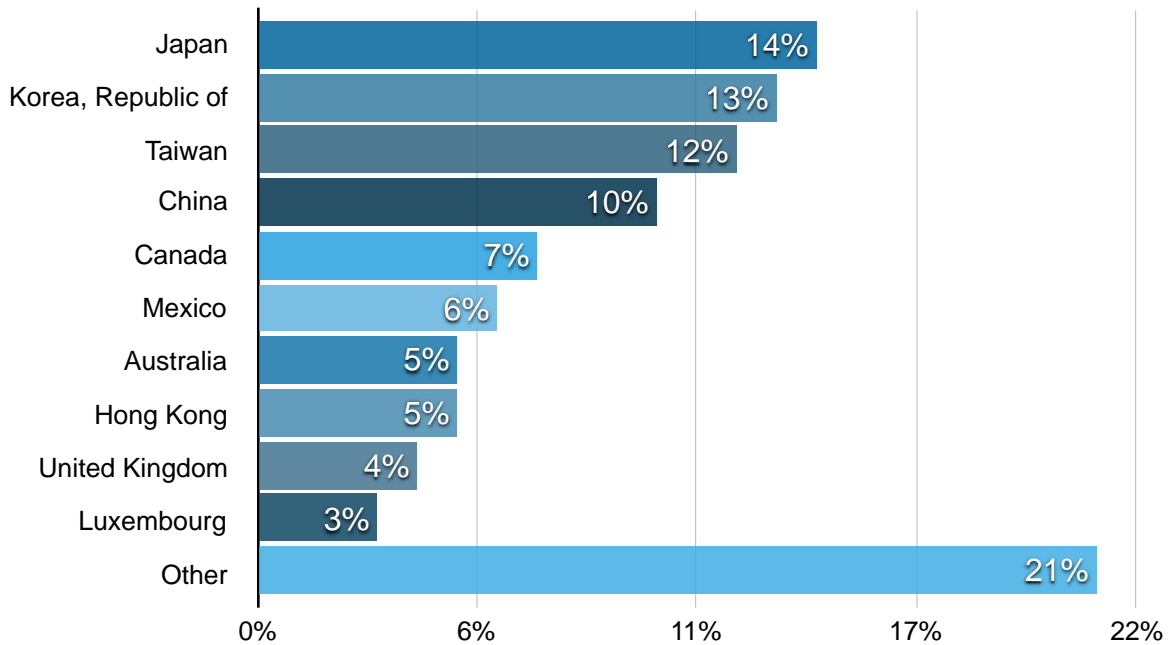
Egypt
France
Germany
Greece
Honduras
Hong Kong
Indonesia
Italy
Japan
Korea, Republic of

Luxembourg
Malaysia
Mexico
Netherlands
New Zealand
Pakistan
Panama
Peru
Philippines
Saudi Arabia

Spain
Sudan
Switzerland
Taiwan
Thailand
Tunisia
United Arab Emirates
United Kingdom
Vietnam

EXPORT PARTNERS

Percentage of Total Export Certificates Issued 2017



FAIRS AND EXPOSITIONS



Kings County
Fairgrounds

801 S. 10th Ave
Hanford, CA
93230

Phone
559-584-3318
www.kingsfair.com

ORGANIC PRODUCTION

Kings County boasts more than 28,000 acres registered as organic, producing numerous organic fruit, nut and seed crops. Crop values are included in their respective commodity groups.



There were 36 organically registered producers, and 6 organic handlers including 5 new registrants. All registered producers were certified by a third party certifying agency.

2017 brought new changes to the ever evolving California Organic Food and Farming Act. The changes helped streamline the registration process and adjusted some registration fees.

CERTIFIED FARMERS MARKET



Thursday Night
Market Place
Downtown Hanford
May-September
5:00 PM - 8:00 PM

In 2017, Kings County had 20 certified producers growing nearly 100 different commodities. Certified Farmers Markets provide producers opportunities to sell the products they have grown directly to consumers. In turn, consumers have the benefit of fresh, seasonal produce and an opportunity to gather as a community.

LAND USE

Surrounding Counties	2016 Rank	2016 Gross Value*	Total County Area Acres	Value per Acre	Top Commodity	2016 Gross Value*
Tulare	1	\$6,980,772,000	3,840,000	\$1,818.00	Milk	\$1,713,019,000
Kern	2	\$6,878,664,000	3,112,320	\$2,211.00	Almonds, All	\$1,453,855,000
Fresno	3	\$6,606,368,000	5,166,720	\$1,279.00	Almonds, All	\$1,171,800,000
Monterey	4	\$4,841,519,000	2,127,359	\$2,276.00	Berries	\$835,848,000
Kings	9	**\$2,037,002,000	890,785	\$2,269.00	Milk	\$648,905,000

* Gross Value does not include timber. Values based on annual crop reports.

**Revised



LAND USE SUMMARY

Land Use Category	2016		2014		Acreage Change
	Acres	Percent	Acres	Percent	
Prime Farmland	110,915	12	112,254	13	-1,339
Farmland of Statewide Importance	339,020	38	365,024	41	-26,004
Unique Farmland	18,920	2	19,221	2	-301
Farmland of Local Importance	10,984	1	11,034	1	-50
Grazing Land	338,243	38	313,863	35	24,380
Urban and Built-Up Land	40,075	4	37,196	4	2,879
Other Land	32,579	4	32,144	4	435
Water Area	62	0	62	0	0
Total Acres	890,798		890,798		

WEIGHTS & MEASURES

We, in partnership with the California Department of Food and Agriculture, serve the people of California by preserving and defending the measurement standards essential in providing the citizens a basis of value comparison and fair competition in the marketplace.

In Kings County, weights and measures inspectors work to preserve equity in the marketplace. Using specialized and accurate equipment, they perform a multitude of inspections of commercial devices and commodities that touch the lives of people everyday.



In 2017, the Kings County Department of Measurement Standards:

- Verified 239 devices for Service Agencies
- Inspected 3,041 devices including:
 - 212 Counter Scales
 - 25 Livestock & Animal Scales
 - 104 Vehicle Scales
 - 1,267 Retail Motor Fuel Meters (gas pumps), as well as checking for petroleum advertising and labeling compliance
- Verified scanned prices of 727 packages and made 64 test purchases in Quantity Control
- Performed 7 weighmaster audits

YOUTH IN AGRICULTURE

Photographs were submitted by local 4-H members, giving us a fresh perspective on agriculture in and around our county. Through these photographs, it is plain to see our young people have a firm grasp on just what beauty lies in our local industry. You can find additional submitted photos throughout the crop report.



Photo by Megan Clark (Island 4-H)



Photo by Raige Clark (Island 4-H)



Photo by Lauren Vickers (Lemoore 4-H)



Photo by Adalynn Luna (Lemoore 4-H)



Photo by Megan Clark (Island 4-H)



Photo by Anna Dooley (Kings Harvest 4-H)

KINGS COUNTY GENERAL INFORMATION

County Seat	Hanford
County Population (1/1/2017)	149,537*
Population per Square Mile	109
Total Assessed Value (2016)	\$9,869,806,001
Land Area (Square Miles)	1,392
Total Acres	890,798**
Total Harvested Crop Acreage (2016)	746,455
Total Farmland	818,082**
Public Ownership of Land (Acres - 2008)	
Federal	27,313.76
State	4,015.99
County	1,421.61
Local Agencies	3,587.01

Agricultural production ranked 8th among California counties (based on 2014 total value).

Railroads - Burlington Northern Santa Fe, Union Pacific & San Joaquin Railroad.

Major Roads - Interstate 5, Highway 41, Highway 43, Highway 33 & Highway 198.

Water Sources - Kings River, Tule River, Kaweah River, Kern River, & California Aqueduct.

Elevation - 175 feet above sea level at Tulare Lake to 3473 feet above sea level at the Kings/Monterey County line boundary.

Average length of growing season: 288 days.***

Average climate: 196 sunny clear days, 74 partly cloudy days & 95 cloudy days.

Average date of last spring frost: February 14.***

Average date of first fall frost: November 30.***

*Courtesy of the California Department of Finance (Estimate)

**Courtesy of the California Department of Conservation

***Courtesy of The Old Farmer's Almanac

RAINFALL – HANFORD, CA

YEAR	JULY	AUG	SEP	OCT	NOV	DEC	JAN	FEB	MAR	APR	MAY	JUN	TOTAL
1967-68	0.00	0.00	0.31	0.00	1.99	0.50	0.62	0.64	1.00	0.50	0.08	0.23	5.87
1968-69	0.00	0.00	0.00	1.33	0.98	1.64	6.69	4.54	0.79	0.85	0.32	0.00	17.14
1969-70	0.07	0.00	0.15	0.05	0.51	0.70	1.60	1.33	1.42	0.14	0.00	0.21	6.18
1970-71	0.00	0.00	0.00	0.00	2.40	1.23	0.35	0.19	0.23	0.40	1.44	0.00	6.24
1971-72	0.00	0.00	0.04	0.06	0.41	1.87	0.04	0.35	0.00	0.23	0.00	0.00	3.00
1972-73	0.00	0.00	0.24	0.21	2.90	0.65	2.44	2.29	2.20	0.12	0.00	0.00	11.05
1973-74	0.00	0.00	0.00	0.76	0.46	0.94	2.97	0.13	1.75	0.03	0.00	0.00	7.04
1974-75	0.00	0.00	0.00	0.64	0.24	1.40	0.09	2.26	1.24	0.49	0.00	0.00	6.37
1975-76	0.00	0.00	0.98	0.76	0.05	0.22	0.00	2.94	0.19	1.47	0.03	0.00	6.64
1976-77	0.00	0.22	1.47	0.00	1.15	0.96	0.96	0.03	0.43	0.00	0.01	0.01	5.24
1977-78	0.00	0.00	0.00	0.05	0.06	2.85	2.22	5.05	4.12	1.71	0.00	0.07	16.13
1978-79	0.00	0.00	1.10	0.00	0.79	0.50	1.84	1.61	1.16	0.03	0.00	0.00	7.03
1979-80	0.04	0.00	0.08	0.41	0.62	0.41	2.90	2.71	1.28	0.05	0.04	0.00	8.54
1980-81	0.00	0.00	0.00	0.09	0.00	0.21	1.80	0.86	2.10	0.68	0.17	0.00	5.91
1981-82	0.00	0.00	0.00	0.76	1.08	0.29	0.84	0.33	3.52	1.75	0.00	0.00	8.57
1982-83	0.18	0.00	0.64	1.03	2.15	0.71	3.74	2.59	3.39	1.63	0.04	0.45	16.55
1983-84	0.00	0.05	0.82	0.43	1.66	1.22	0.01	0.42	0.27	0.18	0.00	0.00	5.06
1984-85	0.00	0.00	0.01	0.52	1.41	1.66	0.59	0.61	0.68	0.12	0.01	0.00	5.61
1985-86	0.05	0.00	0.00	0.54	2.11	0.56	1.46	2.60	3.40	0.45	0.00	0.00	11.17
1986-87	0.00	0.00	0.15	0.00	0.21	0.77	1.77	2.04	2.02	0.06	0.13	0.00	7.15
1987-88	0.00	0.00	0.00	0.86	0.72	1.74	1.37	0.40	0.93	2.65	0.07	0.05	8.79
1988-89	0.00	0.00	0.00	0.00	1.33	2.29	1.02	2.03	0.85	0.02	0.39	0.06	7.99
1989-90	0.00	0.00	0.67	0.32	0.20	0.53	1.79	1.02	0.30	0.97	0.87	0.00	6.67
1990-91	0.00	0.66	0.00	0.01	0.22	0.09	0.37	1.32	6.67	0.19	0.66	0.00	10.19
1991-92	0.00	0.00	0.11	0.38	0.14	1.32	1.40	3.32	0.85	0.10	0.00	0.36	7.98
1992-93	0.01	0.00	0.00	0.58	0.00	2.62	3.88	2.48	2.16	0.07	0.08	0.00	11.88
1993-94	0.00	0.00	0.24	0.24	0.68	0.66	1.45	1.02	0.70	0.69	0.00	0.26	5.94
1994-95	0.00	0.00	1.06	0.35	1.54	0.33	4.70	0.51	4.77	0.65	0.87	0.00	14.78
1995-96	0.00	0.00	0.00	0.00	0.00	1.59	1.79	2.55	2.15	0.89	0.16	0.00	9.13
1996-97	0.00	0.00	0.00	1.65	0.87	3.03	3.02	0.12	0.21	0.00	0.00	0.04	8.94
1997-98	0.00	0.00	0.06	0.09	1.96	1.80	2.00	4.05	2.60	1.68	1.31	0.00	15.55
1998-99	0.00	0.00	0.00	0.68	0.63	0.64	3.01	0.56	0.43	1.37	0.00	0.44	7.76
1999-00	0.00	0.00	0.00	0.15	0.00	0.00	1.08	3.28	1.59	0.97	0.48	0.00	7.55
2000-01	0.00	0.00	0.03	1.31	0.00	0.03	1.98	1.48	1.24	1.12	0.00	0.35	7.54
2001-02	0.09	0.00	0.00	0.18	1.84	1.99	0.87	0.31	1.04	0.03	0.01	0.00	6.36
2002-03	0.00	0.00	0.00	0.00	1.42	1.14	0.25	1.13	1.05	1.67	0.67	0.82	8.15
2003-04	0.00	0.00	0.00	0.07	0.47	2.05	0.97	2.32	0.25	0.01	0.02	0.00	6.16
2004-05	0.00	0.00	0.00	2.09	0.44	2.13	2.55	1.69	2.02	0.70	0.84	0.00	12.46
2005-06	0.00	0.00	0.02	0.01	0.21	1.15	3.07	0.48	2.60	2.98	0.54	0.00	11.06
2006-07	0.00	0.00	0.00	0.09	0.16	0.90	0.61	0.90	0.22	0.27	0.01	0.00	3.16
2007-08	0.00	0.05	0.32	0.30	0.10	1.17	1.86	1.10	0.00	0.00	0.10	0.00	5.00
2008-09	0.00	0.00	0.00	0.14	1.03	1.36	0.60	1.43	0.21	0.03	0.43	0.37	5.60
2009-10	0.00	0.00	0.20	1.31	0.23	1.27	2.30	1.93	0.31	1.63	0.32	0.00	9.50
2010-11	0.00	0.00	0.00	0.76	1.24	5.29	0.88	0.96	2.70	0.32	0.41	0.91	13.47
2011-12	0.04	0.00	0.00	0.48	0.71	0.01	0.61	0.43	1.72	1.79	0.03	0.00	5.82
2012-13	0.00	0.00	0.00	0.14	0.34	1.52	0.25	0.42	0.67	0.08	0.18	0.00	3.60
2013-14	0.00	0.00	0.01	0.00	0.33	0.16	0.30	1.38	0.27	0.35	0.01	0.00	2.81
2014-15	0.00	0.00	0.03	0.00	0.94	2.52	0.08	0.72	0.02	0.77	0.10	0.00	5.18
2015-16	0.45	0.00	0.00	0.38	0.91	1.40	3.09	0.05	1.99	0.57	0.02	0.09	8.95
2016-17	0.00	0.00	0.00	0.76	0.40	1.60	3.70	2.80	0.31	1.02	0.36	0.01	10.96
2017-18	0.00	0.01	0.17	0.06	0.21	0.08							0.53
AVERAGE	0.02	0.02	0.17	0.41	0.79	1.21	1.68	1.51	1.45	0.69	0.22	0.09	8.14